

NOTES:  
 1. Scaled dimensions can be taken from this drawing if printed at the correct size and scale.  
 2. Responsibility is not accepted for errors made by others in scaling from this drawing.  
 3. This drawing must be read in conjunction with all relevant drawings, documents and information prepared by the Architects, other Consultants and Specialists.  
 4. Any discrepancy on this drawing must be referred to the Architects and clarification obtained before any action by others and prior to commencement of works.  
 5. All dimensions must be checked on site before any action by others and prior to commencement of work or the preparation of Specialist drawings.  
 6. The copyright of this drawing remains with the Architect.  
 7. If in doubt ask!

REVISIONS

--	--



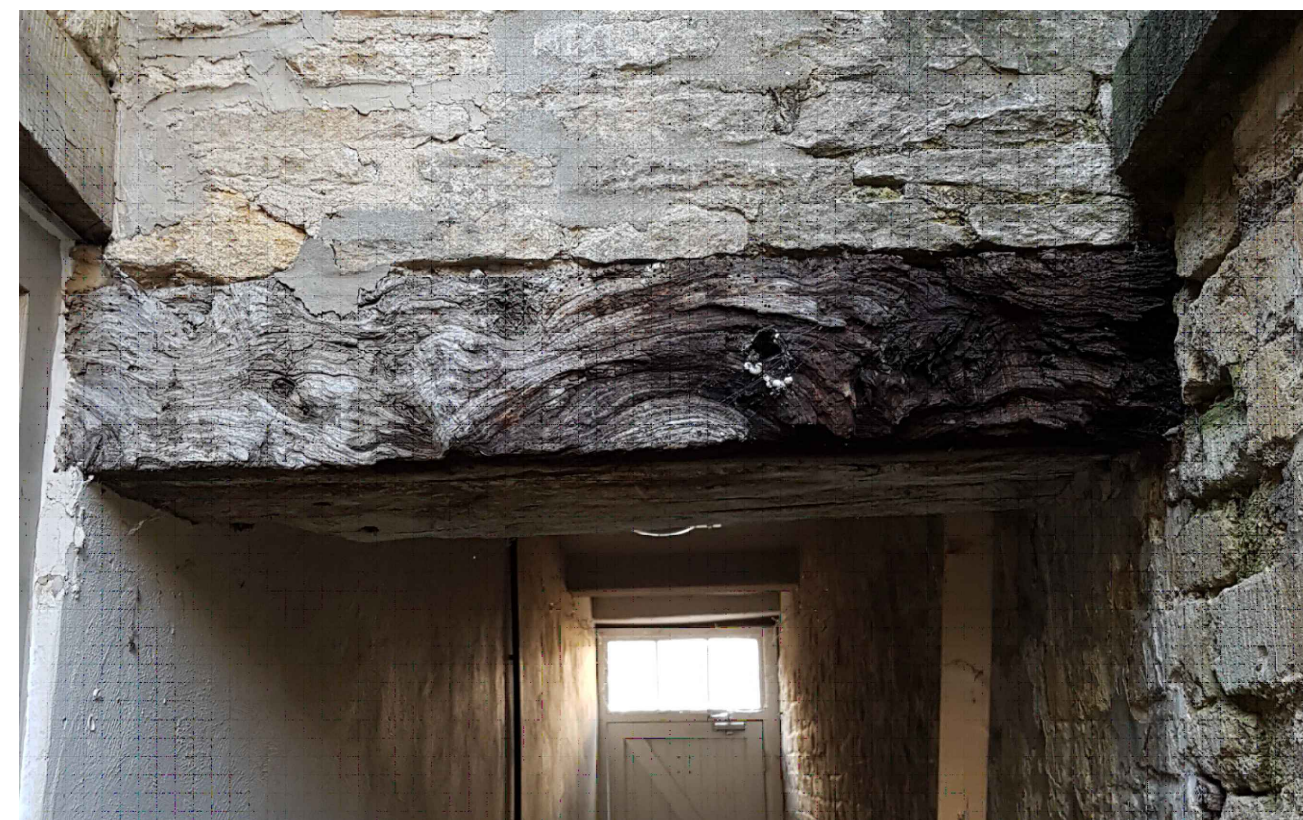
Front Elevation



Side Elevation

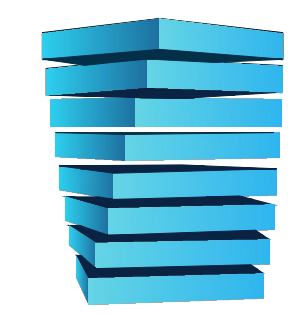
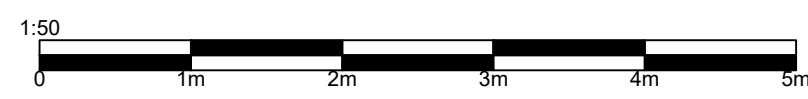


Back Elevation



Replace lintel with new to match existing

Existing lintel over side access is rotten. Resin or scarf repairs would be inadequate given the weight of walling stone above and therefore the lintel must be replaced with new timber of matching species and dimensions.



ERIC COLE ARCHITECTURE

Eric Cole Ltd. Eagle Suite, The Wheelhouse, Bond's Mill, Stonehouse, Gloucestershire, GL10 3RF  
 T: +44 (0)1285 641234 E: mail@ericcole.co.uk W: www.ericcole.co.uk

PROJECT:	22 GLOUCESTER STREET, CIRENCESTER		
DWG TITLE:	OPTION 9 ELEVATIONS		
SCALE:	1:50 @ A1	DRAWN: IT	CHECKED:
DWG NO:	23.037.PL.19	REV: A	DATE: 09.01.23