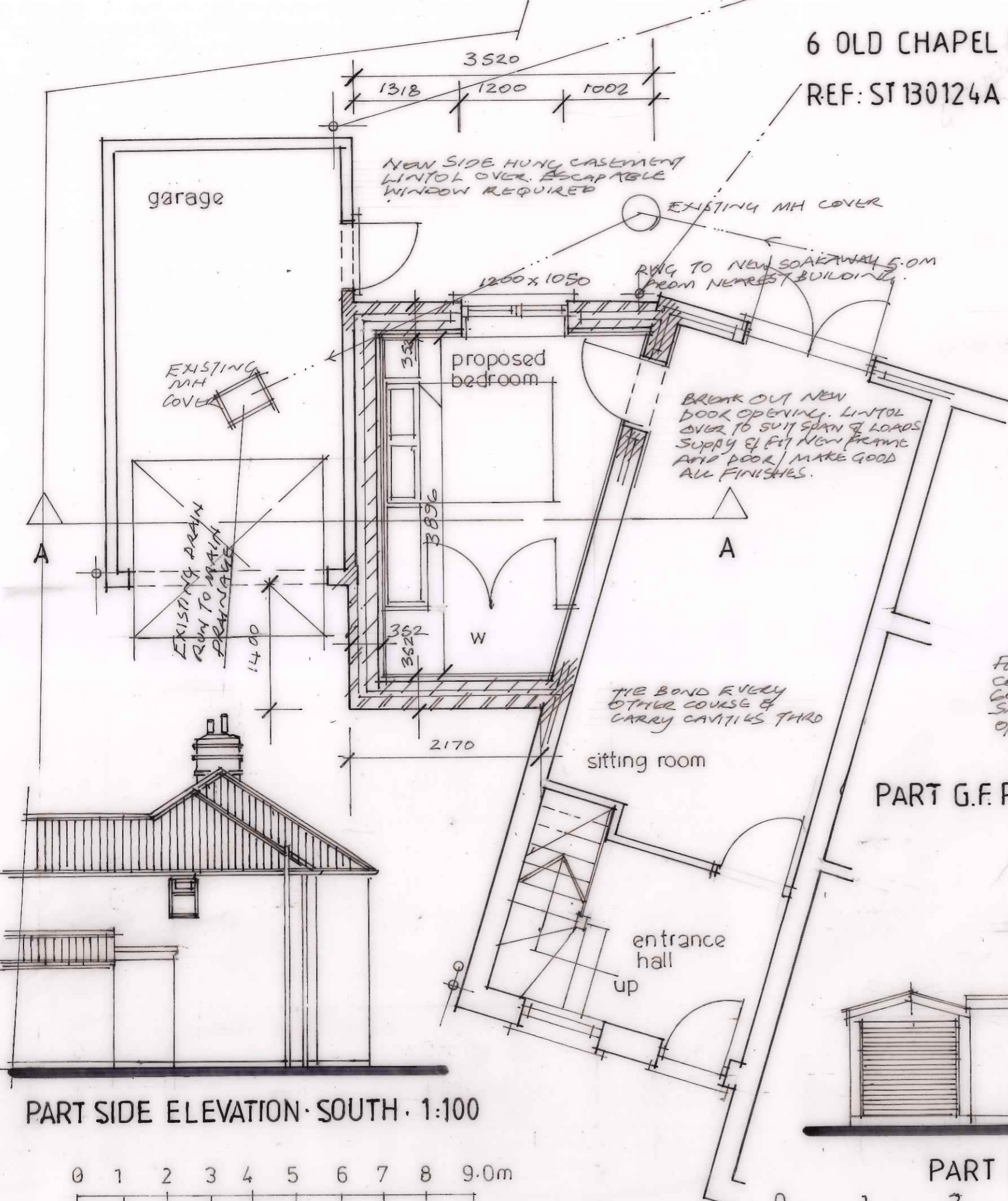


6 OLD CHAPEL ROAD. FREETHORPE NORWICH NR13 3LU

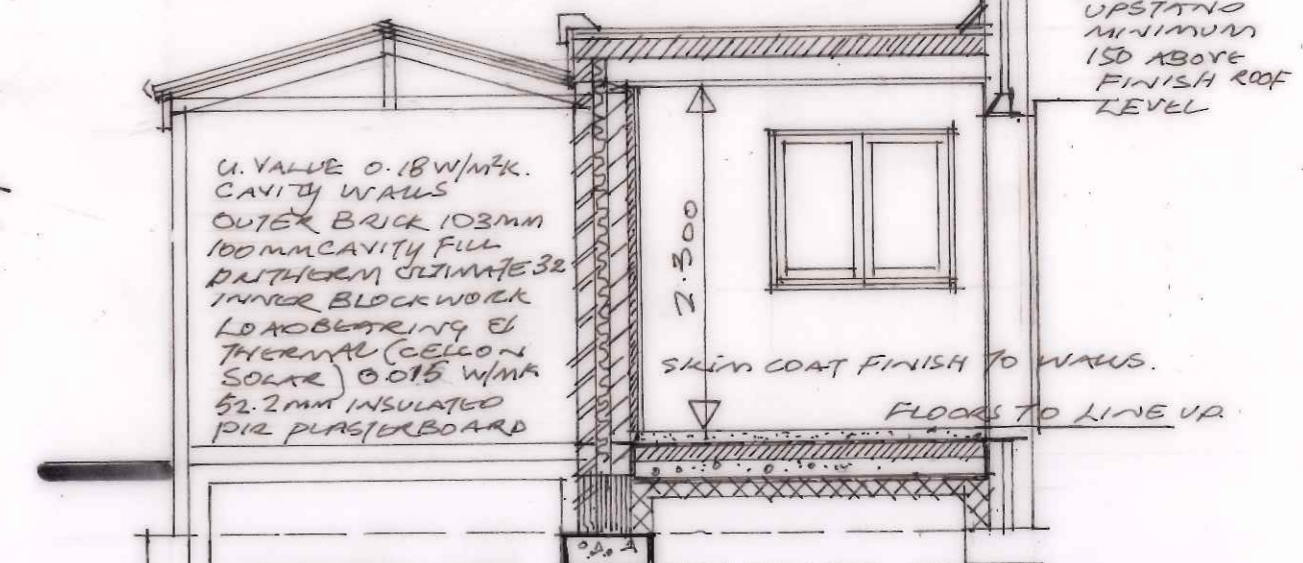
REF: ST130124A

DATE: FEBRUARY 2024

REV A 19/2/2024 PART SOUTH ELEVATION ADDED AS REQUESTED BY PLANNING OFFICER!



(WARM ROOF CONSTRUCTION)
 ROOF CONSTRUCTION: EDMP 1.2MM RUBBER SHEET FINISH WITH EDGE TRIM ON SHEET TO SIT ON 18MM OSB3 BOARD. CELOTEX GA 4000 - 150MM THICK ON 50 X 150 C16 PLAT ROOF JOISTS @ 400 CENTRES. 15MM PLASTER BOARD, TAPE JOINTS SKIM COAT U VALUE 0.15 W/M²K
 FIRTINGS FALLS TO SUIT TO REPAIR TO REAR CUTTER & DOWNPIPE. RNG TO SOAKAWAY



SECTION 1:50

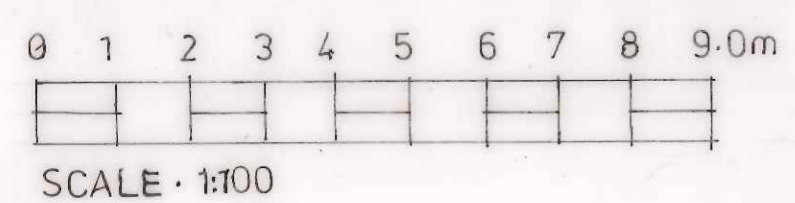
FOUNDATIONS
 CONCRETE STRIP FOUNDATION 600 WIDE X 225 DEEP TO SATISFACTION OF SUPERVISING OFFICER.

FLOORS.
 75MM CEMENT/SAND SURETLO ON 125 MICRON VAPOUR BARRIER ON 100MM THICK CELOTEX GA 4000, 25MM UPSTAND OF PIR AT PERIMETERS ON 100MM THICK CONCRETE SLAB ON 1000 GAUGE DAMP PROOF MEMBRANE JOINED WITH DPC ON 150MM THICK WELL CONSOLIDATED HARD CORE
 NOTE: 1.0M WIDE REINFORCEMENT MESH IN CONCRETE SLAB WHILE DRAINAGE PASSES UNDER NEW EXTENSION

PART G.F. PLAN 1:50



PART SIDE ELEVATION SOUTH 1:100



PART FRONT AND REAR PROPOSED ELEVATIONS 1:100

