

Cascade chart for tree quality assessment		
Category and definition	Criteria (including subcategories where appropriate)	Identification on plan
<b>Trees unsuitable for retention (see Note)</b>		
<b>Category U</b> Those in such a condition that they cannot realistically be retained as living trees in the context of the current land use for longer than 10 years	Trees that have a serious, irremediable, structural defect, such that their early loss is expected due to collapse, including those that will become unsuitable after removal of other category U trees (e.g. where, for whatever reason, the loss of companion shelter cannot be mitigated by pruning)  Trees that are dead or are showing signs of significant, immediate and irreversible overall decline  Trees infected with pathogens of significance to the health and/or safety of other trees nearby, or very low quality trees representing significant trees of better quality NOT Category U trees can have existing or potential conservation value, which it might be desirable to preserve: see 4.6.7.	<b>Red on Plan</b>
<b>Trees to be considered for retention</b>	<b>1 Mainly arboricultural qualities</b> <b>2 Mainly landscape qualities</b> <b>3 Mainly cultural values, including conservation</b>	
<b>Category A</b> Trees of high quality with an estimated remaining life expectancy of at least 40 years	Trees that are particularly good examples of their species, especially if rare or unusual, or those that are essential components of groups or formal or semi-formal arboricultural features (e.g. the trees that might be included in category A, but are downgraded because of impaired condition (e.g. presence of significant though remediable defects, including unsympathetic past management and storm damage), such that they are unlikely to be suitable for retention for beyond 40 years; or trees lacking the special quality necessary to merit the	<b>Green on Plan</b>
<b>Category B</b> Trees of moderate quality with an estimated remaining life expectancy of at least 20 years	Trees present in numbers, usually growing as groups or woodlands, such that they attract a higher collective rating than they might as individuals or trees occurring as collectives but situated so as to make little visual contribution to the wider locality	<b>Blue on Plan</b>
<b>Category C</b> Trees of low quality with an estimated remaining life expectancy of at least 10 years, or young trees with a stem diameter below 100 mm	Trees present in groups or woodlands, but without this containing on them significantly greater landscape value; and/or trees offering low or only temporary/transient landscape benefits  Trees with no material conservation or other cultural value	<b>Grey on Plan</b>

**02037 Tree Survey**  
This drawing may not be prepared from a photograph taken from ground level without any aerial investigation. Observations are based upon the best judgement of the tree and any visualisation given at the time of recording. The survey should be regarded as a preliminary survey, requiring inspection to be required as detailed individually. It is not intended to be a health, condition and safety of trees to be carried out as a condition of a planning application or to be used in a way that would require a tree to be removed or to be a condition of a planning application.

**Material abbreviations:** > Green Blue, > Line line.

**BC:** This indicates any attribute that has been estimated.

**Measurements/estimates:** Measurements are taken with a tape, a clinometer or laser. Estimations are indicated, this will be indicated within the BC column.

**The survey:** Numbered Tag attached to each stem, usually on the inside face of the stem at roughly 2.5 metres. Where the number is prefixed by a T, G, H, A, D, S or W this denotes that the tag refers to a Tree, Group, Hedge, Area, Stamp, Drain or Woodland.

**Notes:** Tree species are entered by their common name - Latin can be provided upon request.

**Age:** I record the age near records of the tree's likely age for guidance only, i.e.:

Y: Young: Recently established/planted tree	M: Mature: The middle one-third of likely expected lifespan
IM: Intermediate: Fully established and growing with high vigour	SE: Old Mature: The last one-third of likely expected life span with signs of infirmity/retirement
CM: Old Mature: The tree is at the end of its likely expected lifespan	V: Veteran: An aged example of the species typically with cracks & conservation value
	A: Ancient: Beyond its expected life span possible of historical interest or is a state of decline

**Height:** I estimate height to the nearest metre to the main trunk.

**Crown Height:** I estimate height to the nearest half-metre to the main extension of the canopy.

**DBH:** The height and diameter of the First Significant Branch.

**Diameter:** These figures relate to a measurement of the stem at 1.5m above ground level measured in millimetres, measured with a rounded disc diameter tape.

**Canopy (D.S.W.):** I estimate the distance of the canopy radius to the nearest metre to provide a mean distance of separation between the stem and the outer canopy.

**Condition:** Is a personal assessment of the tree's health/condition in the current season, is comparison to other trees within the locality, region and on site color of the tree likely response to site change.

**Site Condition:** Is a personal assessment of the tree likely condition remaining with the site in use, including the current site management practices, or the tree's potential from significant environmental change. There are three risk levels: Good: A tree of normal vitality; Fair: A tree of lower vitality; Poor: A tree of low vitality; Dead: A dead or very low vitality tree.

**Comments:** Observations/General comments relating to tree health, structure and condition.

**Management Options:** Comments/detailed records of work required to improve immediate safety or improve the management of the tree.

**The Risk Assessment:** We regularly apply our SURRY (Barnes Associates Risk Method (BAM)) - we are proud to be based in Yorkshire and do not intend the inclusion of the 'Y'. We openly admit this is a method based upon the TRISA, methodology. The complete details of TRISA (The Hazard, Risk Evaluation and Treatment System) can be found at <https://www.barnesassociates.co.uk/2010/07/20/trisa/>

**Regulation:** Is a representation of the area under a tree that is subject to high loading and is interpreted for tree stability. It is calculated by 4 x Diameter of the Tree stem, multiplied by C (Weather) in 'The Body Language of Trees'.

**Minimum RPA (m):** - (not) Protective Area Minimum distance in metres of the position of protective fencing in the vicinity of a tree to avoid damage to the roots or rooting environment of related trees on an area equivalent to a circle with a radius 12 times the stem diameter.

**The Protection Zone (TZ) (m):** - This is an additional distance effect of 2m beyond the RPA, to provide space for growth and to act as a buffer to the RPA fence, essentially, this provides construction access, such as space for machinery.

**Root Protection Area (RPA) (m):** - RPA given in metres from the centre of the stem.

**Root Protection Area (RPA) (m):** - The ideal total area for the RPA given in metres squared.

**Site Zone:** - The proposed RPA line reflects the minimum root protection zone in line with BS5837. The buffer zone offers a 2m zone outside the RPA which should be considered in the project planning phase to include further protection/reduction to protect potential tree roots and allow future growth. It also provides assessment/working space outside the minimum RPA.

**Site Address:** 5 Raby Park, Wetherby LS22 5SA

**Tree Surveyor:** John Evans

**Date of Assessment:** 24/01/2024

**Assessment Method:** Visual assessment, undertaken from ground level only.

**Weather Conditions:** Fair and warm for the time of year.

**Site Description:** The site is a domestic garden located to the west of the main property. The site is well defined by hedging and fencing.

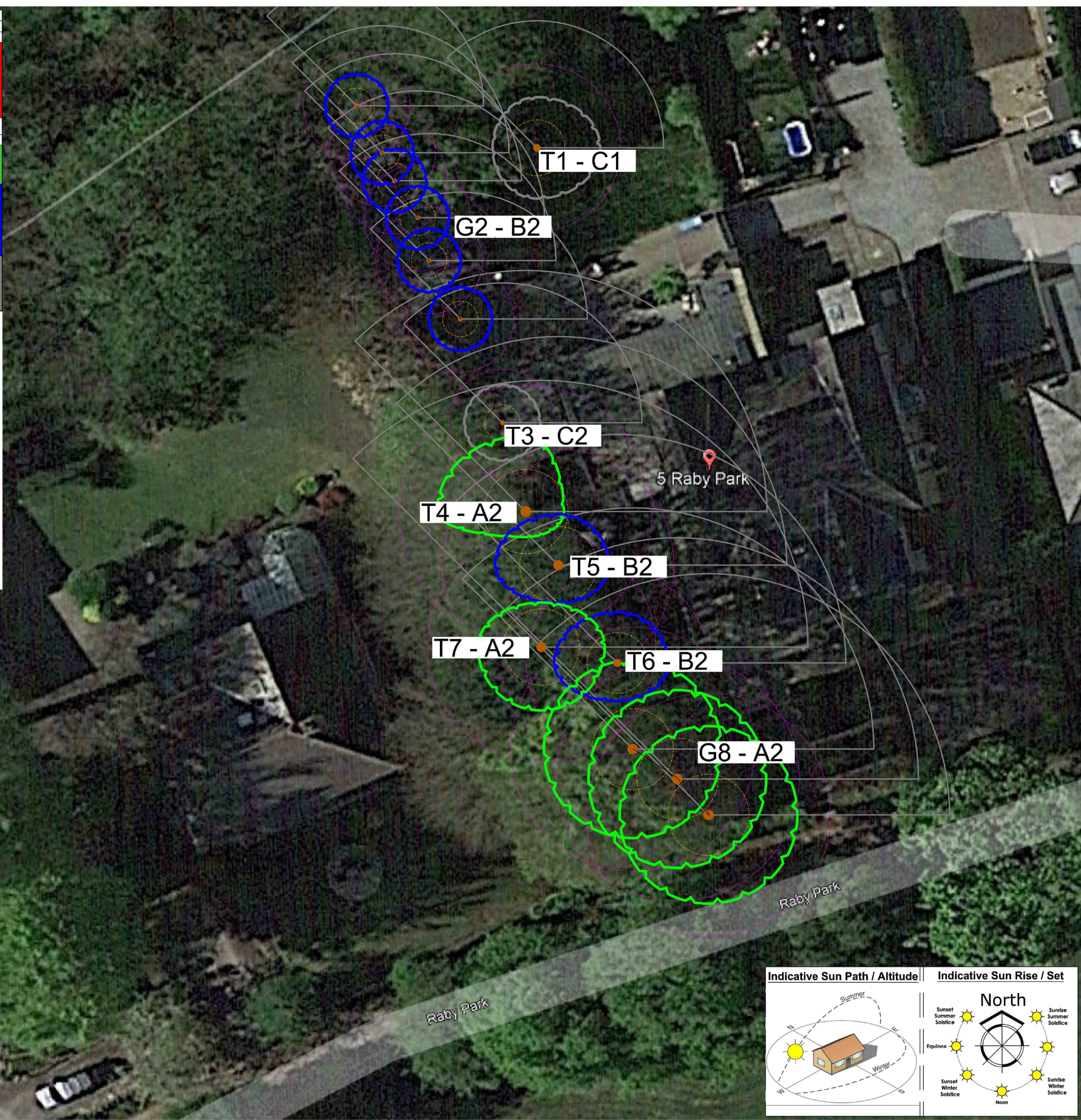
**Tree Population:** The most significant trees are in neighbouring land to the west. These make up a mature group of British natives.

**Key Arboricultural Points:** The mature trees have been allowed to be over pruned which will reduce their expected life spans.

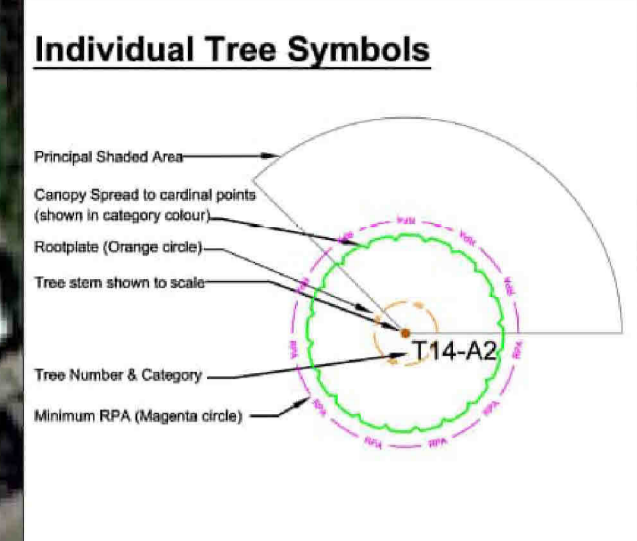
**Exposure:** The front/south of the site is relatively open and thought to be relatively exposed to the side and rear buildings and trees will significantly reduce any effects of the wind.

**Legislative Protection:** Information on the Leeds City Council website indicates the site is within a Conservation Area but none of the trees have Tree Preservation Orders.

**Soil Type:** Information of the National Soils Resources Institute refers to the soils on site being 'Tiredly draining lime rich loamy sand', such soil can withstand compaction and change well. Ideally, such soils should be protected from significant change.



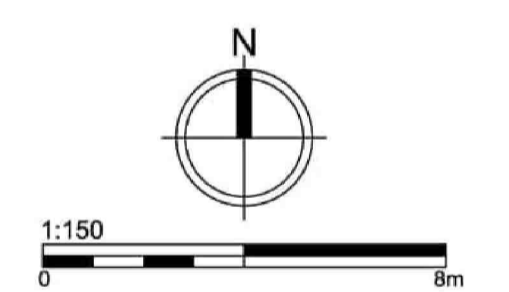
© Barnes Associates Ltd. This plan should be viewed in **CLOR**, please do not scale from this drawing, all dimensions should be checked on site, any errors or divergences should be brought to the attention of Barnes Associates Ltd. All rights described in Chapter IV of the Copyright, Design & Patents Act 1988 have been generally asserted and copyright of this plan remains with Barnes Associates Ltd until all fees are paid in full.



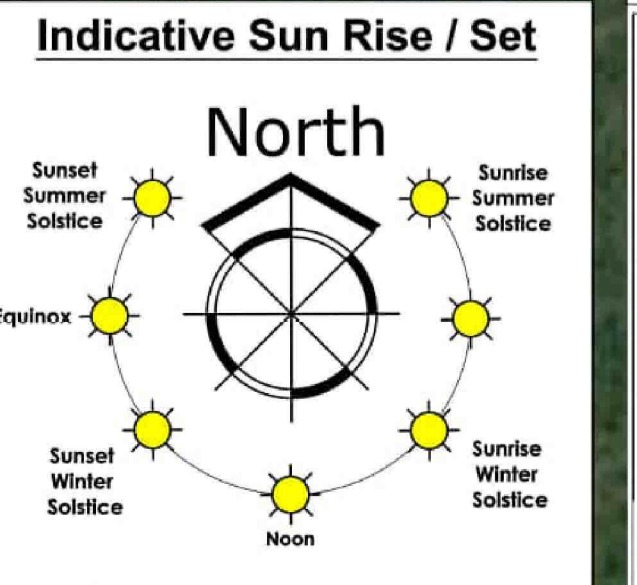
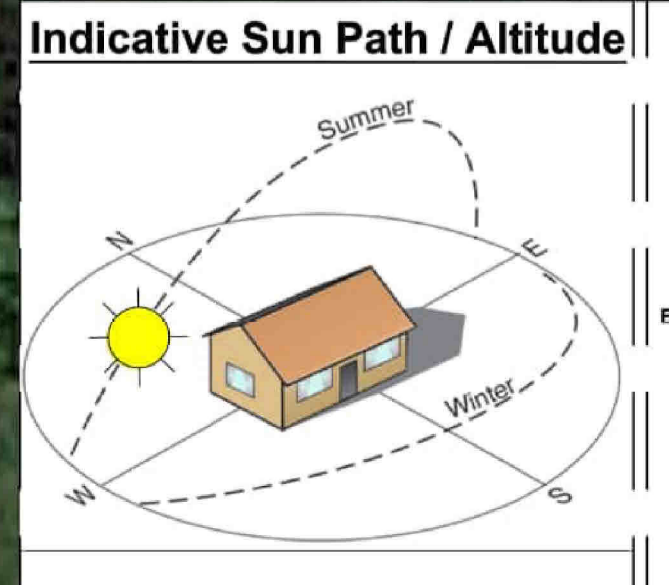
- BS5837 - Conditional Colour Code**
- A - High Quality Tree or Group
  - B - Moderate Quality Tree or Group
  - C - Low Quality Tree or group
  - U - Unsuitable for Retention

**Note:**  
Plan is based upon an aerial image sourced from Google Earth. As such, precision scaling cannot be guaranteed.

Revision	Description
A	02/02/2024 Preliminary Issue



Client:	My Modular		
Detail of:			
Project:	5 Raby Park, Wetherby		
Title:	Tree Survey & Constraints Plan		
Drawing No:	BA23621TS	Status:	P
Scale:	1:150 @ A1		
Date:	24/01/2024		
Drawn By:	Checked:	Approved:	
JE	TG	SB	



**BARNES associates**  
SURVEY MANAGE IMPROVE  
Unit 1 Foundry Yard, New Row  
Boroughbridge YO51 9AX

Company Number 10438116  
Registered in England and Wales