

15 Year
Warranty

James Hardie brings unique designs to life with beautiful fibre cement products that are built to last. It's Possible™



Hardie® VL Plank
Light Mist



JamesHardie™

Plank

Hardie® VL Plank

Contents

- 06 It's Possible™
- 08 Introducing the Hardie® Plank products
- 10 Create interest with installation styles
- 12 Choose long-lasting colour
- 14 The finishing touch



...n for our ...es Hardie,

with a natural and
re cement cladding.
nd homeowners alike,
ldwide.

15 Year
Warranty





Introducing the Hardie® Plank products

Hardie® Plank products include two profiles, made from advanced material fibre cement. With an A2-s1, d0 fire rating, our boards are non-combustible and offer the best fire protection possible for any coloured facade board.

Hardie® Plank fibre cement cladding

Dimensions: 3600 x 180 x 8mm
Weight per piece: 7.4kg
Pieces per m²: 1.85
Visible surface: 150 - 180mm
Colours: 21
Textures: Cedar and Smooth



Hardie® VL Plank fibre cement cladding

Dimensions: 3600 x 214 x 11mm
Weight per piece: 10.5kg
Pieces per m²: 1.52



est with styles

flexibility with options to
or open jointed.



Colours

■ Hardie® Plank ● Hardie® VL Plank



Arctic White ■ ●



Sail Cloth ■ ●



Light Mist ■ ●



Grey Slate ■ ●



Anthracite Grey ■ ●



Midnight Black ■ ●



Cobble Stone ■



Woodland Cream ■



Soft Green ■



Pearl Grey ■



Monterey Taupe ■



Khaki Brown ■ ●



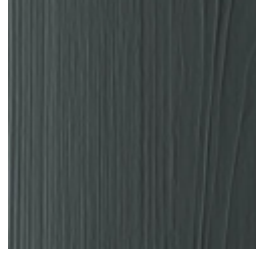
Heathered Moss ■



Mountain Sage ■



Boothbay Blue ■



Evening Blue ■



to textures and a variety
ply – our multi-coat,
ant finish that lasts for
gh performance in a way

lank cladding
Plank cladding
chnology finishes

The finishing touch

Trim is that final touch that completes your home's design. Accentuate corners, columns, doors, windows and more with our complementary trims.



Hardie® NT3® Trim fibre cement profile
for exterior corners:
Dimensions: 3655 x 90/140 x 25mm



Hardie™ Plank MetalTrim™ profile
for exterior corners:
Length: 3000mm



Hardie® Plank lap cladding combined with brick – Colour: Iron Grey





Hardie® VL Plank cladding installed horizontally – Colour: Arctic White



” **Hardie® Plank** is our ‘go to’ recommendation for any homeowner wanting a classic facade that endures.

Premium Stockist

ations

and new build garage block
Plank cladding, brought

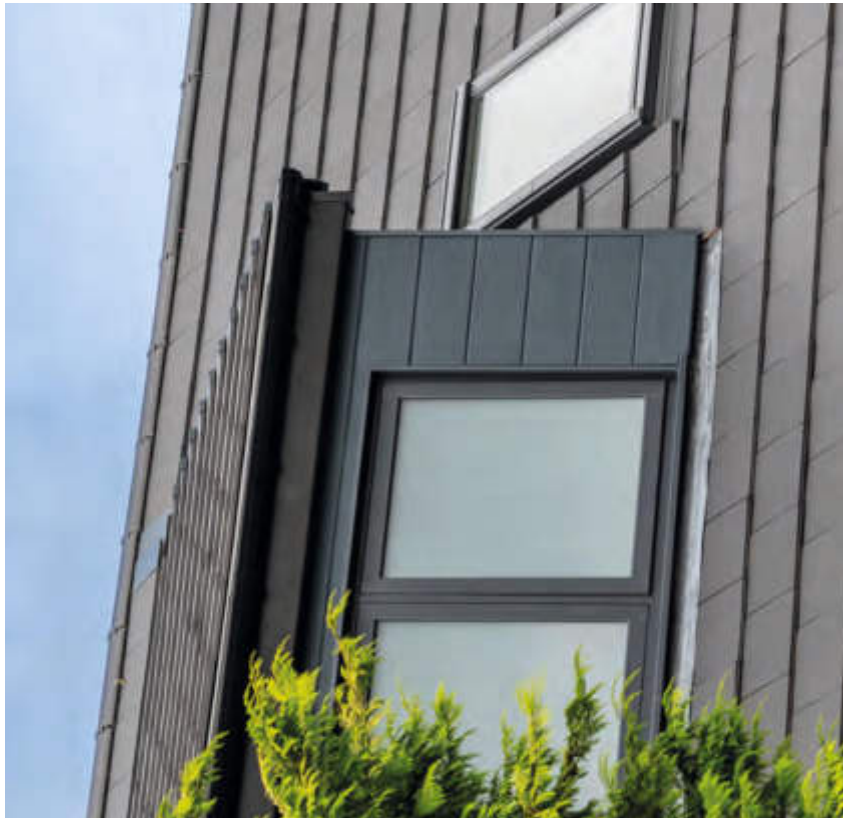


Modern was
re quickly
ank for the
st with the

This traditional home in Harrogate was extended at the rear with a new double-storey extension and contrasting tongue and groove **Hardie® VL Plank** cladding on the upper level.

The homeowner chose **Hardie® VL Plank** boards for their fresh, symmetrical look and low maintenance properties.

Here, Anthracite Grey in Cedar texture complements the local stone to offer a strong contrast. The end result is a striking renovation that beautifully captures the character of the home's local heritage.



f

important decision, with texture, colour, size, choice of facade material

Fire resistance

Hardie® Plank range will not ignite when exposed to direct flame or extreme heat; it is non-combustible with a fire classification of A2-s1, d0 – the highest possible fire rating for a coloured facade board.

Combustible material like wood burns easily and very quickly, producing significant amounts of heat and smoke. uPVC cladding can melt and warp when exposed to fire.



Hardie® Plank range



Wood

Durability

Thanks to its special yet natural composition, Hardie® fibre cement can withstand the effects of the weather in a wide variety of climates. For a permanently beautiful and durable facade.

Wood cladding and uPVC may be susceptible to fading, cracking and sagging over time.



Hardie® Plank range



Wood

Moisture resistance

Tried and tested, our boards offer long-lasting protection and stand up beautifully, whatever the weather.

Humidity and precipitation may cause paint to crack and peel prematurely when using wood-based products as they expand and contract due to changes in climate conditions. Moisture may also cause rotting, swelling and shrinkage.

uPVC cladding is also known to become brittle and susceptible to cracking when cold.

n &
on

Further product information
and solutions:

Jameshardie.co.uk

With our online colour
visualiser tool, you are one
step closer to making your
exterior design a reality.

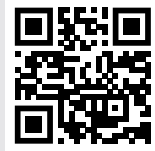
Try it here:

You will find the latest version of this brochure in digital form on our website. Technical modifications subject to changes. Should you require additional information, please contact our customer service. All our products with ColourPlus™ Technology come with a 15-year warranty. More detailed information can be found on our website. Last updated 03/2023.

© 2023 James Hardie Europe GmbH.
™ and ® denote registered and unregistered trademarks of James Hardie Technology Limited and James Hardie Europe GmbH.

**Hardie® Plank range
Personalised Sample Box**

Scan the code to order samples directly to your home.



**Hardie® VL Plank
Installation Video**

Scan the code to watch the step-by-step installation video.



James Hardie Building Products Ltd

7 The Priory
Old London Road
Canwell
Sutton Coldfield
B75 5SH

Contact information:

Tel: 0121 311 3480
Email: info@jameshardie.co.uk
www.jameshardie.co.uk

har-090-00060

