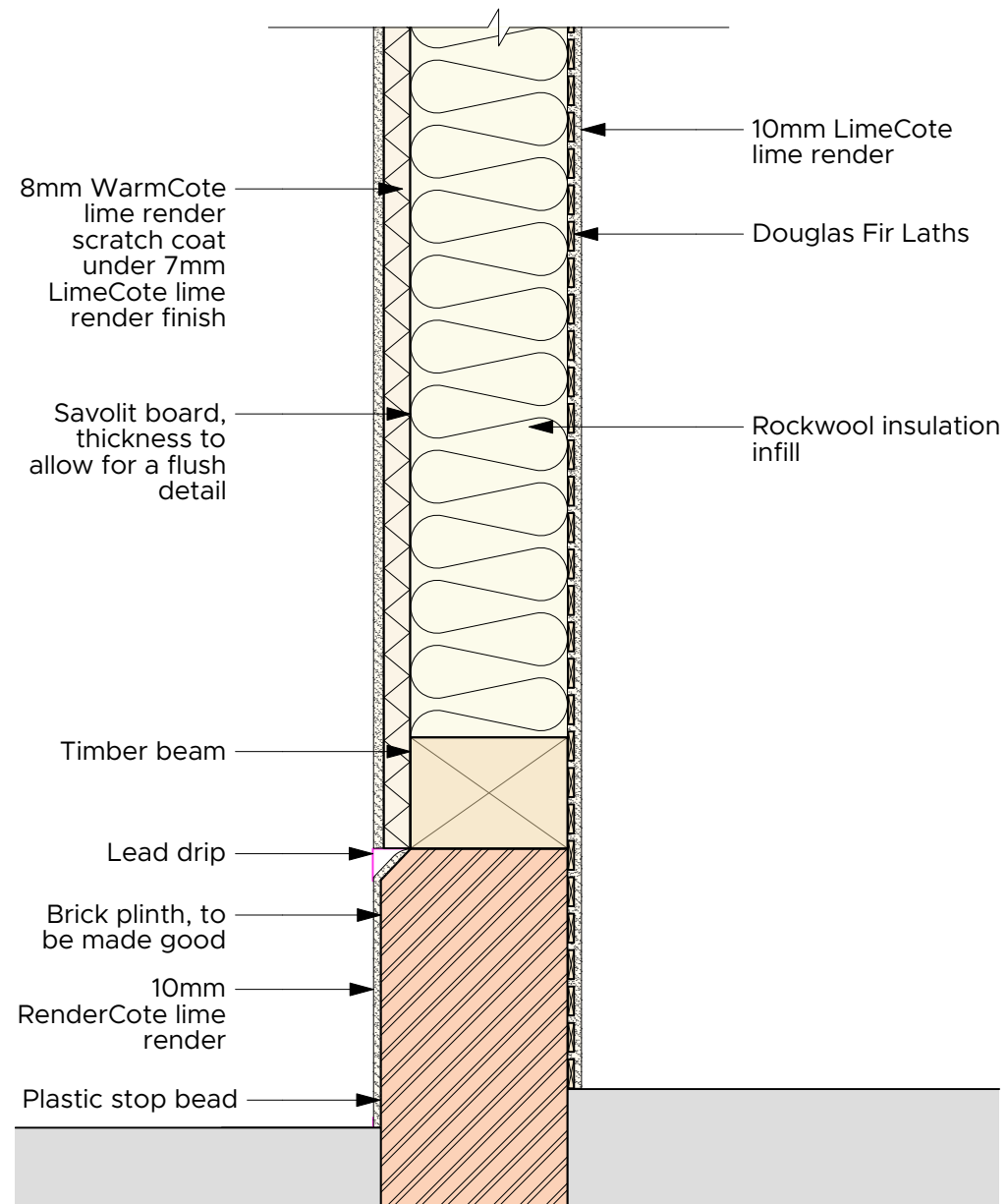
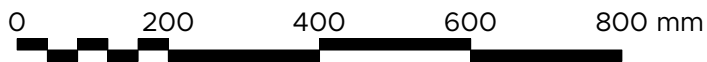


**Existing Detail A-A**  
Scale 1:10



**Proposed Detail A-A**  
Scale 1:10



Scale: 1:10

**NOTES**

RenderCote is a high exposure masonry lime plaster and will be applied directly onto the brick wall build up externally. Internal application will be 10mm LimeCote lime render suitable for internal application.

Timber frame build up alterations for render repair will include the removal and replacement of existing laths with douglas fir laths internally and savolit board externally following the infill of any available void space with breathable rockwool insulation. Re-rendering to be from 8mm WarmCote Scratch coat with a LimeCote finish.