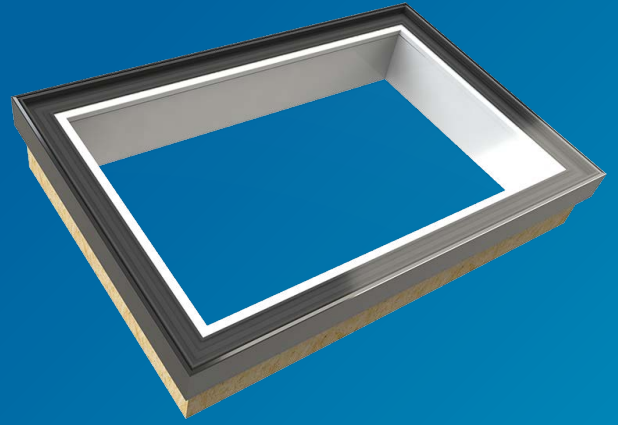


ROOFLAZE

Lighting
by nature™

SKYWAY COMPLETE FIXED

The All In One Rooflight
Solution



Key Features & Benefits

- Fixed flatglass rooflights for residential, commercial and public buildings
- Supplied with a fully integrated and insulated upstand for superior thermal performance

Excellent Energy Efficiency and Performance

- Compatible with all roof types, Flatglass rooflights are supplied on a factory fabricated timber kerb which is finished on site with weatherproof roofing membrane.
- Total combined product U value of rooflight and kerb far exceeds the requirements of Approved Document Part L of the building regulations
- Fully thermally broken aluminium frames prevent cold bridging
- More daylight = less artificial light = energy savings.

Quick and Simple to Install.

- Cover cap ensures no visible fixings and hardware.
- Continuity of product aesthetic – fixed (on our supplied kerb) and hinged units have the same visual appearance both internally and externally.
- Prefabricated kerb comes with a 5 degree fall as standard to help shed water off the glass.
- Minimal framework: daylight is maximised while the visible framework is minimised.
- Install guides available
- Install and survey services.

Full Technical Support

- BIM Objects.
- NBS/ Specify By Specification documents.
- Product CAD drawings.
- All RGR products have been tested using WinISO thermal modelling software.

Frame Specification

- The Skyway Hinged Flatglass rooflight frames are manufactured from extruded aluminium section to BS EN 12020-1-2022 & BS EN 12020-2-2022.
- Polyamide thermal breaks in lid and baseframe to BS EN ISO 16396- 2:2017 making the frames fully thermally broken and extremely thermally-efficient.
- Marine Grade Polyester Powder Coated Aluminium to BS EN 12206-1:2021.
- RAL Colours: Anthracite Grey (RAL 7016).
- Black (RAL 9005) Matt is also available as standard option.
- Other RAL colours and gloss levels available as non-standard options, as well as a Vast array of control and sensor options.

- ✓ British rooflight manufacturer
- ✓ Industry leading weather testing
- ✓ U values as low as 0.9 W/m m2.K
- ✓ 15 -year warranty*

 MADE IN
BRITAIN®


National Association of Rooflight Manufacturers

Technical
Data Sheet
V.1-2023

Glass Specification

Hermetically sealed Double Glazed - IGU:

Outer: Heat Soak Tested Toughened glass.

Cavity: 16mm Argon filled with Swisspacer warm edge spacer + silicone bonded for a fully UV resistant edge seal.

Inner: Laminated or Heat Soak Tested Toughened Glass + Soft Coat Low-E for excellent thermal efficiency. For even better thermal efficiency, bespoke glass with ultra-low U Values is available to special order.

Hermetically sealed Double Glazed IGU (CWCT Class 1 Non-fragile):

Outer: 10mm or 12mm Clear Heat Soak Tested Toughened glass.

Cavity: 16mm Argon filled with warm edge Swisspacer spacer + Silicone bonded for a fully UV resistant edge seal.

Inner: 9.5, 10.8, 11.5, 13.5mm Laminated glass with PVB/SGP interlayers and Soft Low-E coating to cavity face + polished edges.

Hermetically sealed Double Glazed IGU (CWCT Class 2 Non-fragile):

Outer: 6mm Clear Heat Soak Tested Toughened glass.

Cavity: 16mm Argon filled with warm edge Swisspacer spacer + silicone bonded for a fully UV resistant edge seal.

Inner: 9.5, 10.8mm Laminated glass with PVB interlayer and polished edges or 11.5, 13.5mm Laminated glass with SGP interlayer and polished edges.

Our rooflights have been extensively tested both in-house and by accredited third-party test houses for CWCT Non-Fragility.

Triple & Quadruple Glazed IGU's with hermetically sealed glass, and optional painted or sandblasted perimeter borders are available upon request.

Product Testing & Certification

- Non-fragility: CWCT TN92, with Class 1 and Class 2 compliant solutions available
- AA Fire-rated: AA Designation (National Class) or Broof (T4) European Class and Euro Class A1 non-combustible
- Weather tested by BRE to CWCT Class A4 & Class R7
- Skyway Flatglass Protect+ Rooflights Part Q compliant

Pre-fabricated Timber Kerb

- Eaves height 150mm
- 5 Fall as standard
- Stress graded to C16
- Slow grown and kiln dried for extra stability
- Responsibly sourced, forest friendly and FSC Certified
- PEFC Approved
- Celotex GA3050 Insulation
- Low-emissivity foil facing
- OSB Grade-3
- CE Marked
- All Sizes Available
- The Rooflight has a plasterboard termination trim to allow for seamless integration with building fabric.

Bespoke Glass Options

- Solar Control
- Privacy Glass
- Body Tinted
- Acoustic Laminate Interlayer
- Coloured Laminate Interlayer
- Easy-Clean Coatings (Ritec)
- CUin Advanced Thermal Performance
- Triple Glazed
- Quadruple Glazed
- Switchable Privacy Glass
- Heated anti-condensation Glass
- Integral Blind within cavity of glass IGU - zero maintenance
- Standard blind under glass connected to base frame or in lightwell
- Paint or Sandblast borders
- Low Iron Glass
- Company Logo and Artwork Manifestations

British Standards Compliance

- BS 6375-1: 2015+A1:2016 Weathertightness
- BS EN 1026:2016 Air Permeability
- BS EN 1027: 2016 Watertightness
- BS EN 12211: 2016 Wind Resistance
- BS EN 12206-1:2004: Polyester Powder Coating
- BS EN ISO 16396-1:2020 & S EN ISO 16396-2:2020 Polyamide (PA) Thermal Breaks
- BS EN 12020-1:2022 & BA EN 12020-2:2020 Extruded Aluminum Sections
- BS EN 14351-1: 2006 + A2: 2016 Window Performance
- BR443: 2019 Conventions for U Value Calculations
- BS EN 314-2:1993 Plywood Performance & Bonding Quality (Class2)
- BS EN 13986:2004+A1:2015 Wood-based Panels for use in construction
- BS EN 12667:2001 Thermal Conductivity
- BS EN ISO 29469:2022: Compressive Strength
- BS EN 12086:2013 Water Vapour Resistance
- BS 476-7:1997 Spread of Flame (Class 1)
- BS 6229:2003 Flat Roofs

Rooflight Performance

- Building Regulations (E&W) Approved Document L compliant design to achieve low U Values
- U Values: As low as 0.4 W/m².K
- G-values: As low as 0.19
- Light Transmission: Up to 79.1%
- Thermal Modelling by Winslo

Design Loadings

Snow: 640 N/m²

Wind: 750 N/m²

Other loads to be specified by Client

Product Variations

- Single
- Square
- Rectangular
- Triangular
- Hexagonal
- Pentagonal
- Octagonal
- Flatglass Protect+ Doc Q compliant

Control Options

- Electric; 24v as standard
- 300mm chain stroke opening
- Standard touch screen transformer wall switch
- Remote control connects directly to the switch
- Battery backup available for use during mains power failure
- Wi-Fi app for home hub integration
- Input sensors such automatic closing for rain or wind

Manual Hinged with Wormgear Spindle - Square or rectangular only. Manual Access also available - Square or rectangular only. Opening to 85° for occasional access to roof areas for maintenance. Sliding option available.

Rooflight Cleaning & Maintenance

All our Skyway Flatglass rooflights can be supplied with an Easyclean Coating, the Ritec ClearShield system provides an efficient solution to greatly reduce the need for cleaning.

'Non-stick', easy-clean rooflight protection provides:

- Reduced cleaning time, effort, and frequency
- Keeps rooflights looking like new, staying cleaner for significantly longer
- Resists glass staining and contamination from tree sap, bird droppings, traffic pollution and general dirt
- Helps to maintain Window Energy Ratings

Get in touch for Technical and Estimating Advice
T: 01480 474 797
Email: info@roofglaze.co.uk
www.roofglaze.co.uk

Roofglaze
11 Howard Road
Eaton Socon St Neots
Cambridgeshire, PE19 8ET

*Please see the Roofglaze Terms & Conditions of Sale for more details

