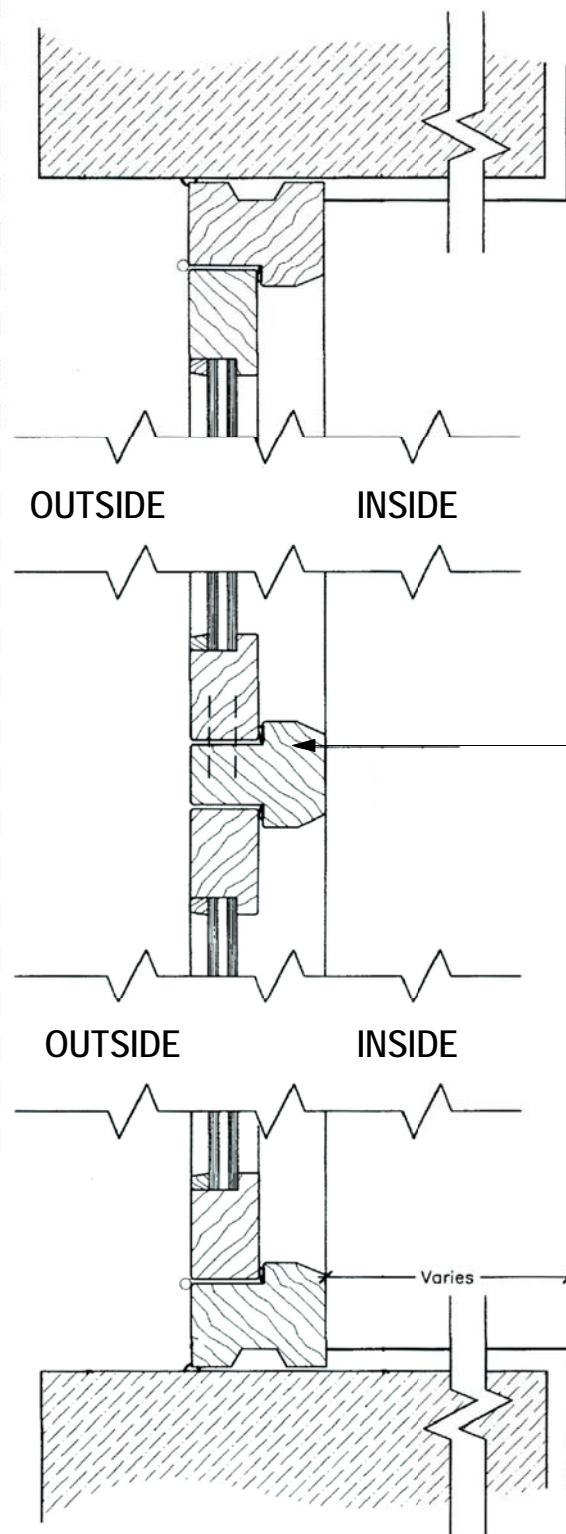


VERTICAL SECTION

1 WINDOW DETAIL
1:5



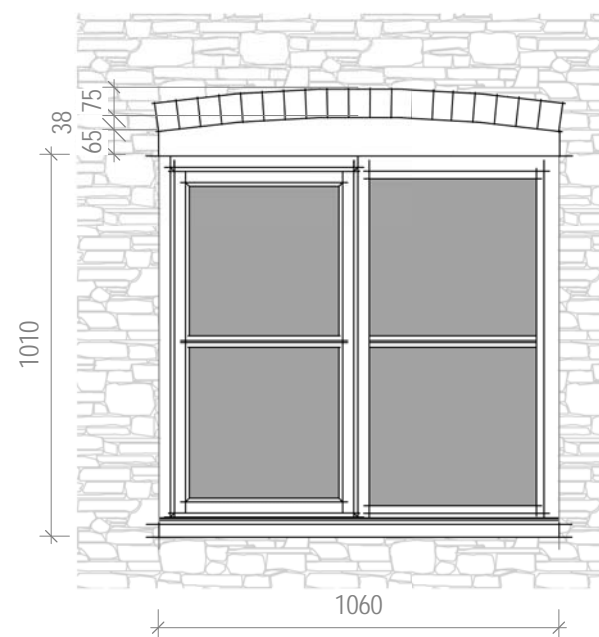
HORIZONTAL SECTION

1060 x 1010mm FLUSH CASEMENT WINDOW WITH STAINLESS STEEL HINGES COMPLETE WITH BLACK ANTIQUE FASTENERS AND STAYS. ENGINEERED RED GRANDIS HARDWOOD TIMBER. LOW-E GLAZING (4mm PLANITHERM OR EQUIVALENT) WITH ARGON GAS VOID WITH WARM EDGE SPACER. 20mm APPLIED DUPLEX GLAZING BAR TO CENTRE PANE.

INTERNAL HEADS, CILLS AND JAMBS INSULATED AND LINED TO MATCH ADJACENT INTERNAL FINISH AND EXTENDED CILLS OVER THICK WALL AND NEW THERMAL LINING AND FINISHES.

COSMETIC MULLION TO BE FIXED TO CASEMENT WHERE CLEAR OPENING WIDTH WOULD OTHERWISE NOT EXCEED 450mm IN ACCORDANCE WITH BR AD PART B

FORMER WINDOW + DOOR OPENINGS & APERTURES (CURRENTLY INFILLED WITH CONCRETE BLOCKWORK AND COVERED WITH OVERGROWN IVY-TYPE GREENERY) TO BE RESTORED WITH TIMBER FRAMED UNITS WITH GLAZING BARS + DECORATIVE BRICK ARCH TOP LINTELS OVER TO MATCH EXG AS INDICATED.

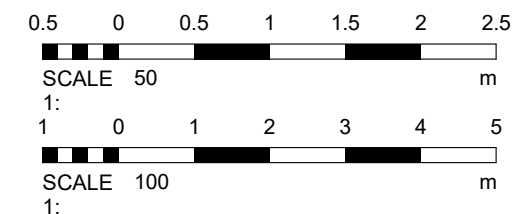


NEW TIMBER FRAMED WINDOW UNITS TO MATCH PREVIOUSLY RESTORED, SECURED AND SAVED FROM DETERIORATION FOLLOWING STORM DAMAGE

SURROUNDING STONEMWORK REPAIRED TO MATCH EXG INC. FINISH + JOINTING.

2

WINDOW DETAIL ARCHTOP BRICK LINTEL
1:20



The Studio
33 Savernake Road
Weston-super-Mare
North Somerset
BS22 9HQ

Copyright 2024 © Cuppa Architects Ltd
studio@cuppaarchitects.co.uk
www.cuppaarchitects.co.uk

Drawing Status

PLANNING

Project Number

2402SCA24

Drawing Title

WINDOW DETAILS 01

Project Address

MENDIP COTTAGE
THE SCAURS, WORLE, W-S-M

Client

THE PALMER FAMILY

Scale

As indicated FOR LPA SUBMISSION

Original Size

A3

Creation Date

FEB 2024

Drawing Number

2402SCA24_PL_1020

Revision