

Do not scale from this drawing. All dimensions to be checked on site. All omissions and discrepancies to be reported to the Architect immediately

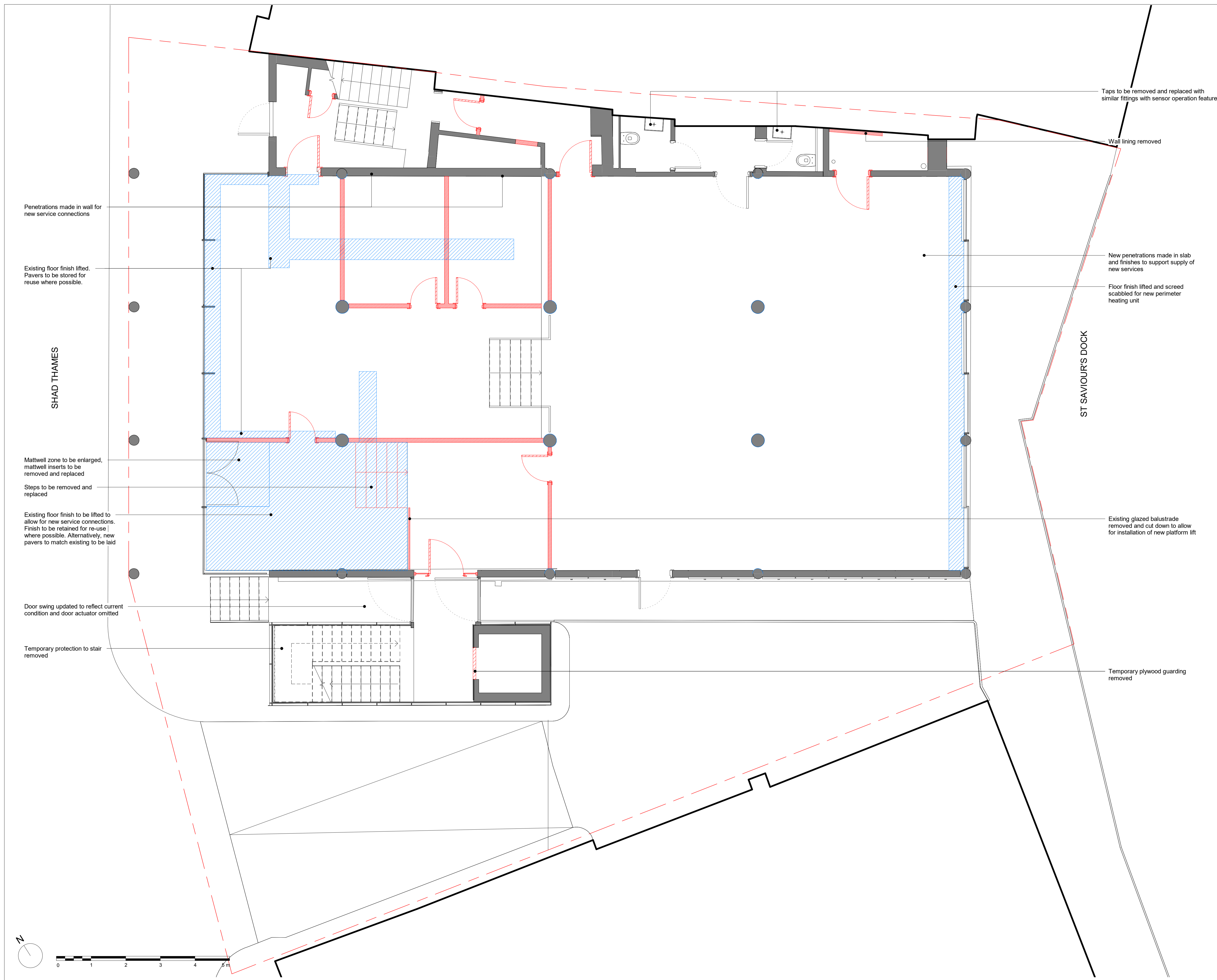
This work is copyright and shall not be reproduced or used for any other purpose without the written permission of Squire and Partners.

Legend:

- Demolition
- Removal of finishes

General Notes:

- Paint to be removed from concrete ceilings and columns to reinstate bare concrete;
- Partitions and internal doors to be removed as illustrated;
- Perimeter plasterboard walls to be retained and made good, metal skirtings to be reinstated as required;
- Light fittings to be retained, unless stated.



Penetrations made in wall for new service connections

Existing floor finish lifted. Pavers to be stored for reuse where possible.

SHAD THAMES

Mattwell zone to be enlarged, mattwell inserts to be removed and replaced

Steps to be removed and replaced

Existing floor finish to be lifted to allow for new service connections. Finish to be retained for re-use where possible. Alternatively, new pavers to match existing to be laid

Door swing updated to reflect current condition and door actuator omitted

Temporary protection to stair removed

Taps to be removed and replaced with similar fittings with sensor operation feature

Wall lining removed

New penetrations made in slab and finishes to support supply of new services

Floor finish lifted and screed scabbled for new perimeter heating unit

ST SAVIOUR'S DOCK

Existing glazed balustrade removed and cut down to allow for installation of new platform lift

Temporary plywood guarding removed

General Note:  
Illustrations on the plan have some minor modifications to door sizes/openings and position of sanitaryware.

Issued for Listed Building Consent	09/02/24	P2
Issued for Listed Building Consent	20/08/21	P1
Description	Date	Chk Rev

## SQUIRE & PARTNERS

Squire and Partners LLP  
The Department Store  
248 Ferndale Road, London SW9 8FR  
T: 020 7278 5555

info@squireandpartners.com  
www.squireandpartners.com

Project  
22 Shad Thames

Title  
Demolition  
Ground Floor Plan

Suitability	Status	
S2	For Information	
Date	Scale @ ISO A1	Job Number
25/03/2020	1:50	20029
Drawing Number	Revision	
20029-SQP-01-00-DR-A-01710	P2	