

Do not scale from this drawing. All dimensions to be checked on site. All omissions and discrepancies to be reported to the Architect immediately

This work is copyright and shall not be reproduced or used for any other purpose without the written permission of Squire and Partners.

General Notes:

For finishes details see Finishes Schedule
 For details of visible MEP elements see MEP Schedule
 For details of proposed light fittings see Lighting Schedule
 See also Schedule of Works to Existing WCs and Teapoints

Phasing Key:

- Existing
- Proposed

Floor Finishes Key:

- Granite Tiles (new) to GF.02
- Granite Tiles (repaired) to GF.03
- Mattwell to GEN.10
- Paint to GEN.04
- Carpet Tile to TYP.01
- Limestone Tiles (repaired) to L04.01
- Floor Tiles to B.01
- Timber Floor to L05.01
- Raised Access Floor Tile to GEN.15

Skirting Key:

- Flush Metal PPC (White) to GEN.12
- Flush Metal PPC (French Grey) to GEN.11
- Flush Metal PPC (Blue/Grey) to GEN.19
- Flush Granite to GF.02
- Flush Limestone to L04.01
- BOH to GEN.14

General Note:

Illustrations on the plan have some minor modifications to door sizes/openings and position of sanitaryware.

Issued for Listed Building Consent	09/02/24	P2
Issued for Listed Building Consent	20/08/21	P1
Description	Date	Chk Rev

SQUIRE & PARTNERS

Squire and Partners LLP
 The Department Store
 248 Ferndale Road, London SW9 8FR
 T: 020 7278 5555

info@squireandpartners.com
 www.squireandpartners.com

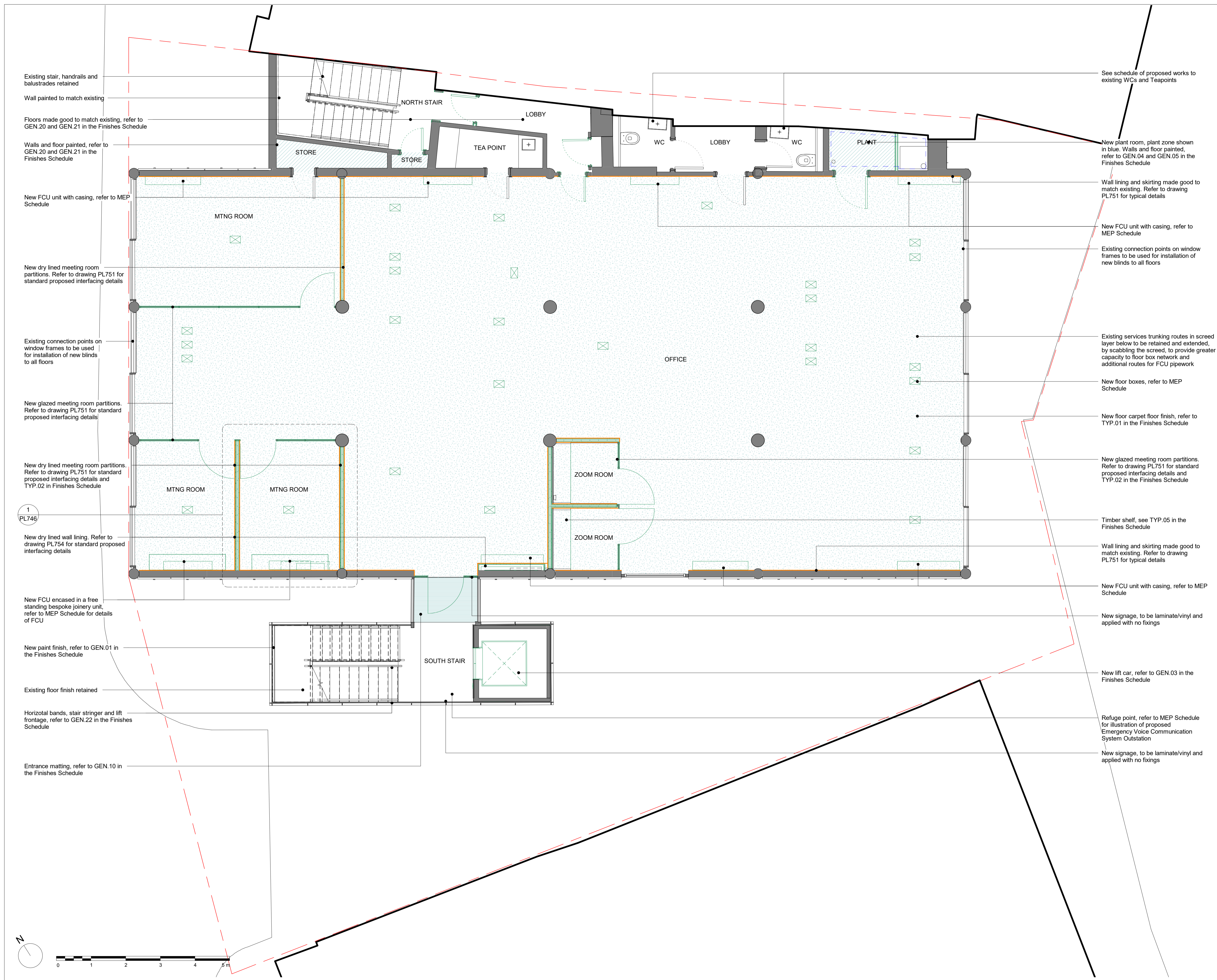
Project
22 Shad Thames

Title
**General Arrangement
 Typical Floor Plan (L01, L02, L03)
 Proposed**

Suitability Status
S2 For Information

Date Scale @ ISO A1 Job Number
25/03/2020 As indicated 20029

Drawing Number Revision
20029-SQP-01-01-DR-A-PL701 P2



1
 PL746

