

Discharge of Condition

22/07240/FULL - Condition 6

22/07255/LBC - Condition 6

33 Blenheim Terrace, NW8 0EH
22014

22/02/2024



Condition Wording

Condition 6 of Consented Application 22/07240/FULL

You must apply to us for approval of samples of the facing materials you will use, including glazing, and elevations and roof plans annotated to show where the materials are to be located. You must not start work on the relevant part of the development until we have approved in writing what you have sent us. You must then carry out the work using the approved materials. (C26BD)

Condition 6 of Consented Application 22/07255/LBC

You must apply to us for approval of samples of the facing materials you will use, including glazing, and elevations and roof plans annotated to show where the materials are to be located. You must not start work on the relevant part of the development until we have approved in writing what you have sent us. You must then carry out the work using the approved materials. (C26BD)

Contents

SECTION ONE	Photographic/Material Specification
1.1	Proposed Lower Ground Floor Plan
1.2	Proposed Ground Floor Plan
1.3	Proposed First Floor Plan
1.4	Proposed Second Floor Plan
1.5	Proposed Roof Plan
1.6	Proposed Northwest (Front) Elevation
1.7	Proposed Southeast (Rear) Elevation
1.8	Proposed Rear Landscape Plan

1.0 Photographic/Material Specification

1.1 Proposed Lower Ground Floor Plan

Material Key



1 Brittonia Buff Sawn Yorkstone



2 Domus Slate Life 20mm DXFWS03



3 Alumasc Apex Heritage Cast Iron Circular Pipe



4 CED Stone Flint Gravel example



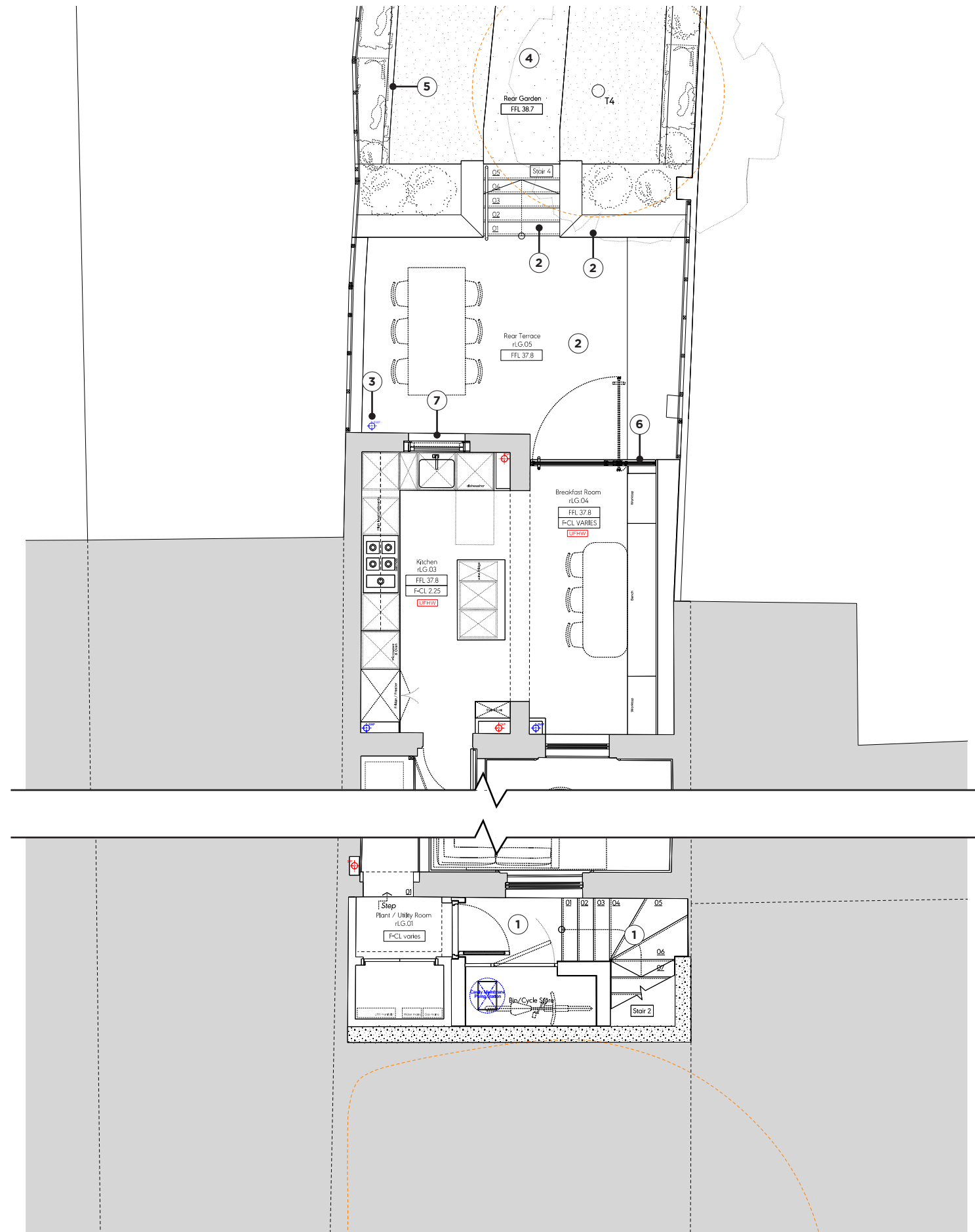
5 Allgreen Oak Sleeper example



6 Maxlight glazed extension example



7 Replacement sash window sample - Salisbury Joinery



Proposed Lower Ground Floor Plan
(Ref 22/07240/FULL & 22/07255/LBC)
Not to scale

1.2 Proposed Ground Floor Plan

Material Key



1 Brittonia Buff Sawn Yorkstone



2 Alumasc Apex Heritage Cast Iron Circular Pipe



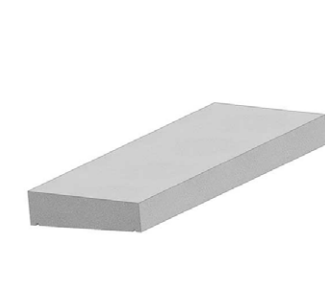
3 Maxlight glazed extension example



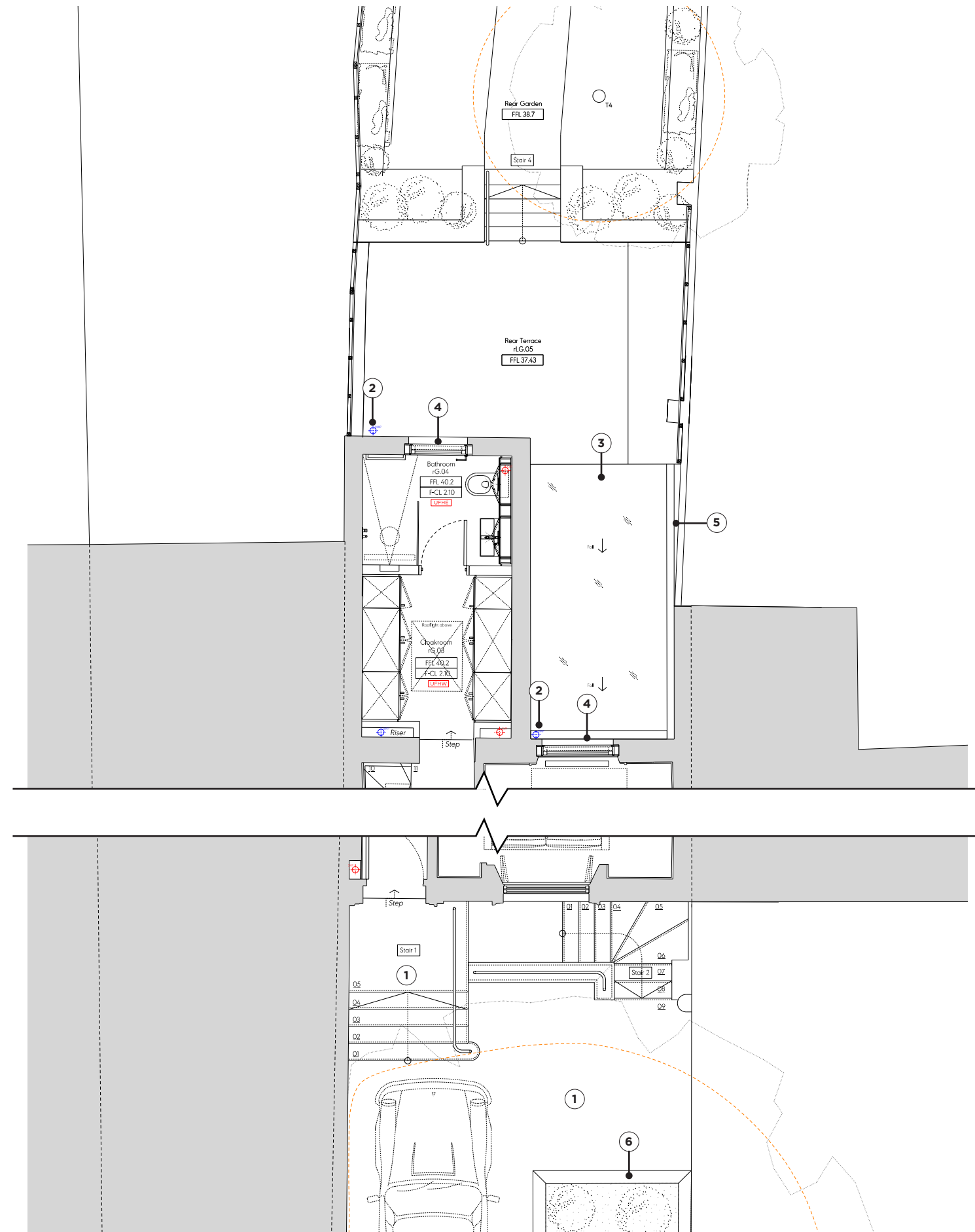
4 Replacement sash window sample - Salisbury Joinery



5 Proposed brickwork (to match existing) sample



6 Portland stone coping example (colour not indicative of final product - for information only) - size and profile to match existing



Proposed Ground Floor Plan
(Ref 22/07240/FULL & 22/07255/LBC)
Not to scale

1.3 Proposed First Floor Plan

Material Key



① Single ply membrane flat roof example



② Maxlight fixed rooflight example



③ Alumasc Apex Heritage Cast Iron Circular Pipe



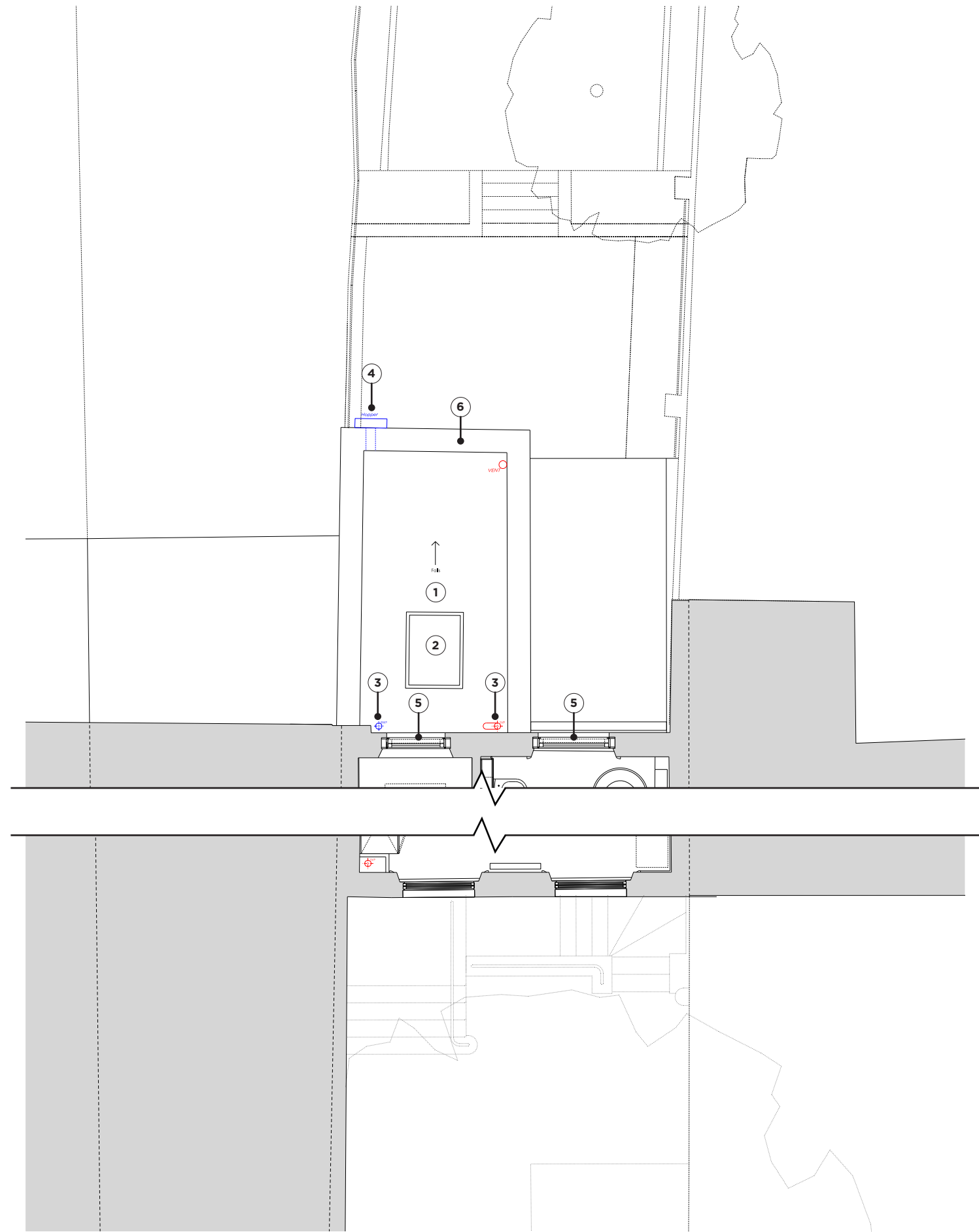
④ Alumasc Apex Heritage Cast Iron Rectangular Rainwater Head



⑤ Replacement sash window sample - Salisbury Joinery



⑥ Portland stone coping example (colour not indicative of final product - for information only) - size and profile to match existing



Proposed First Floor Plan
(Ref 22/07240/FULL & 22/07255/LBC)
Not to scale

1.4 Proposed Second Floor Plan

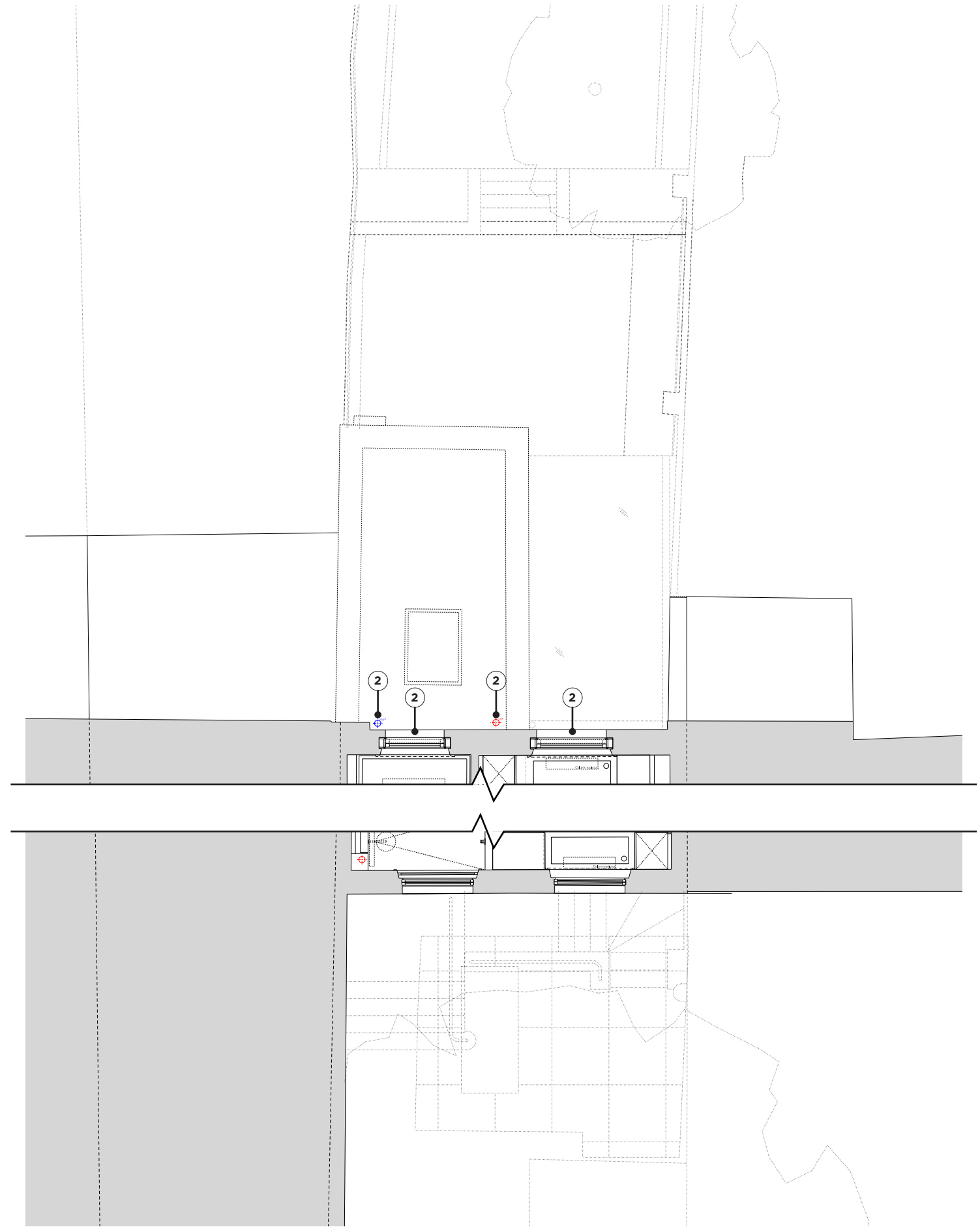
Material Key



5 Replacement sash window sample - Salisbury Joinery



2 Alumasc Apex Heritage Cast Iron Circular Pipe



Proposed Second Floor Plan
 (Ref 22/07240/FULL & 22/07255/LBC)
 Not to scale

1.5 Proposed Roof Plan

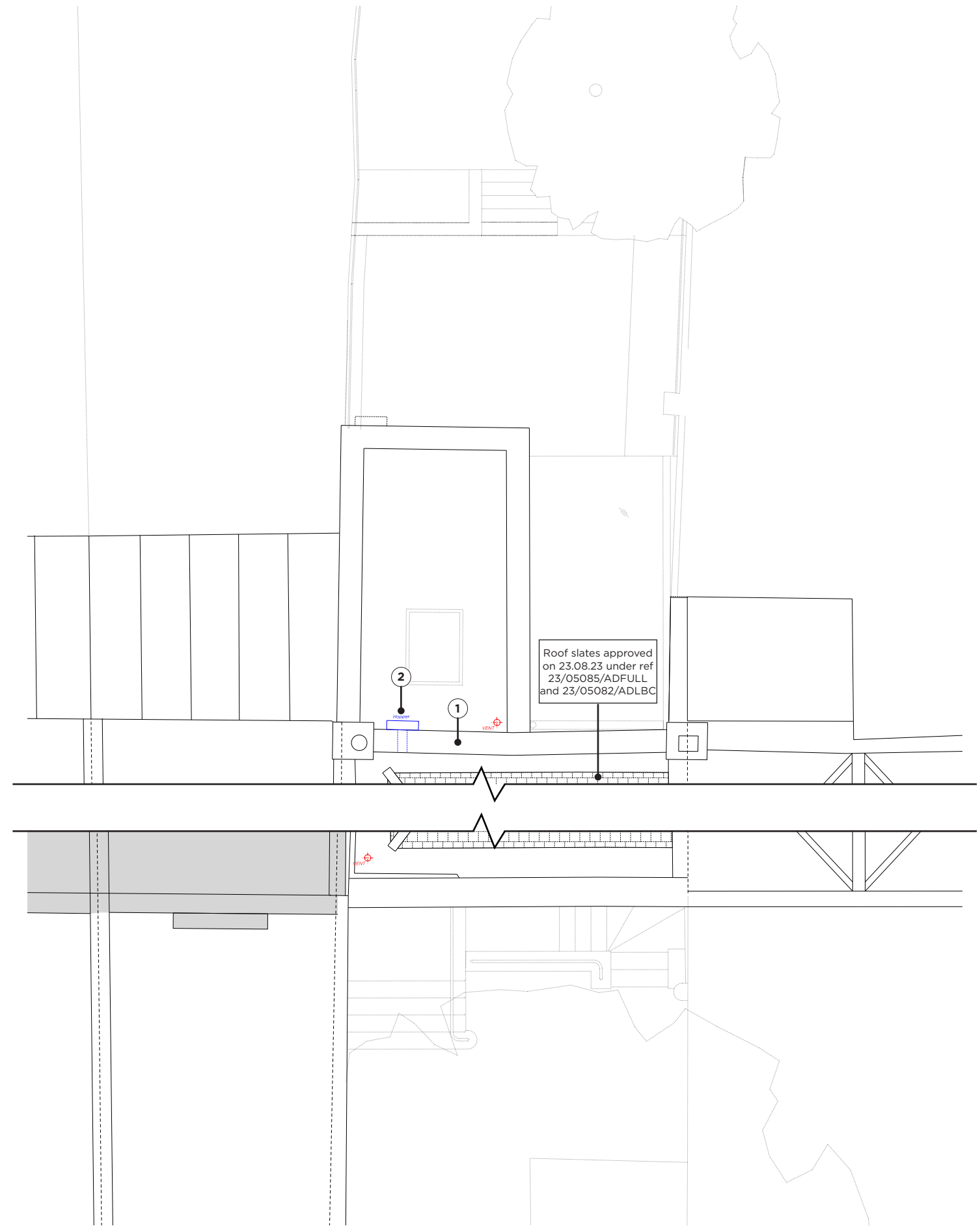
Material Key



⑤ Portland stone coping example (colour not indicative of final product - for information only) - size and profile to match existing



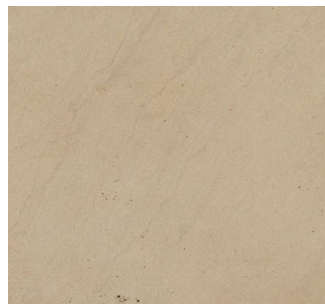
② Alumasc Apex Heritage Cast Iron Rectangular Rainwater Head



Proposed Roof Plan
 (Ref 22/07240/FULL & 22/07255/LBC)
 Not to scale

1.6 Proposed Northwest (Front) Elevation

Material Key



① Brittonia Buff Sawn Yorkstone



Proposed Northwest (Front) Elevation
 (Ref 22/07240/FULL & 22/07255/LBC)
 Not to scale

1.7 Proposed Southeast (Rear) Elevation

Material Key



① Domus Slate Life 20mm DXFWS03



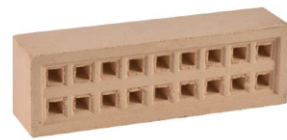
② Portland stone coping example (colour not indicative of final product - for information only) - size and profile to match existing



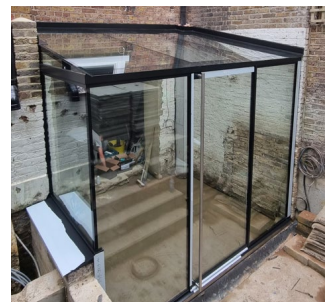
③ Alumasc Apex Heritage Cast Iron Circular Pipe



④ Alumasc Apex Heritage Cast Iron Rectangular Rainwater Head



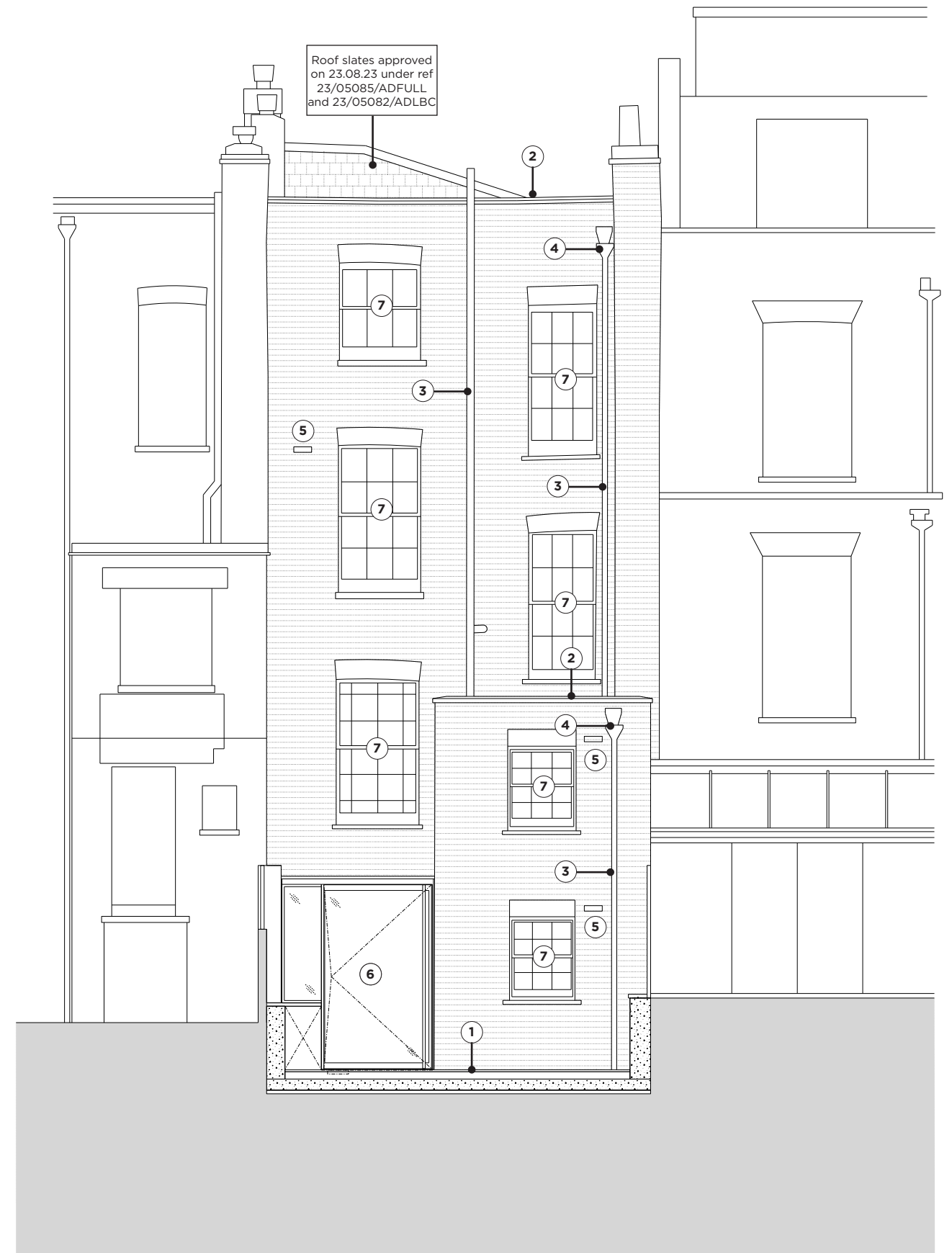
⑤ Clay air brick



⑥ Maxlight glazed extension example



⑦ Replacement sash window sample - Salisbury Joinery



Proposed Southeast (Rear) Elevation
(Ref 22/07240/FULL & 22/07255/LBC)
Not to scale