

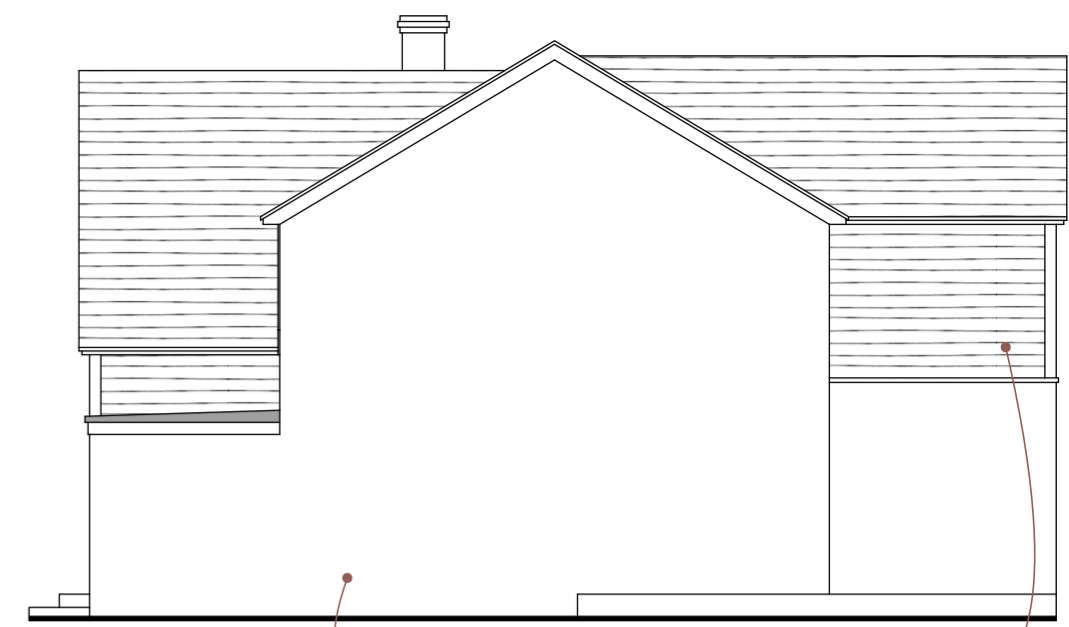
horizontal composite cladding powder-coated grey aluminium windows painted off-white render **EAST ELEVATION**



powder-coated grey aluminium windows and doors horizontal composite cladding painted off-white render **NORTH / FRONT ELEVATION**



powder-coated grey aluminium windows and doors painted off-white render horizontal composite cladding **SOUTH / REAR ELEVATION**



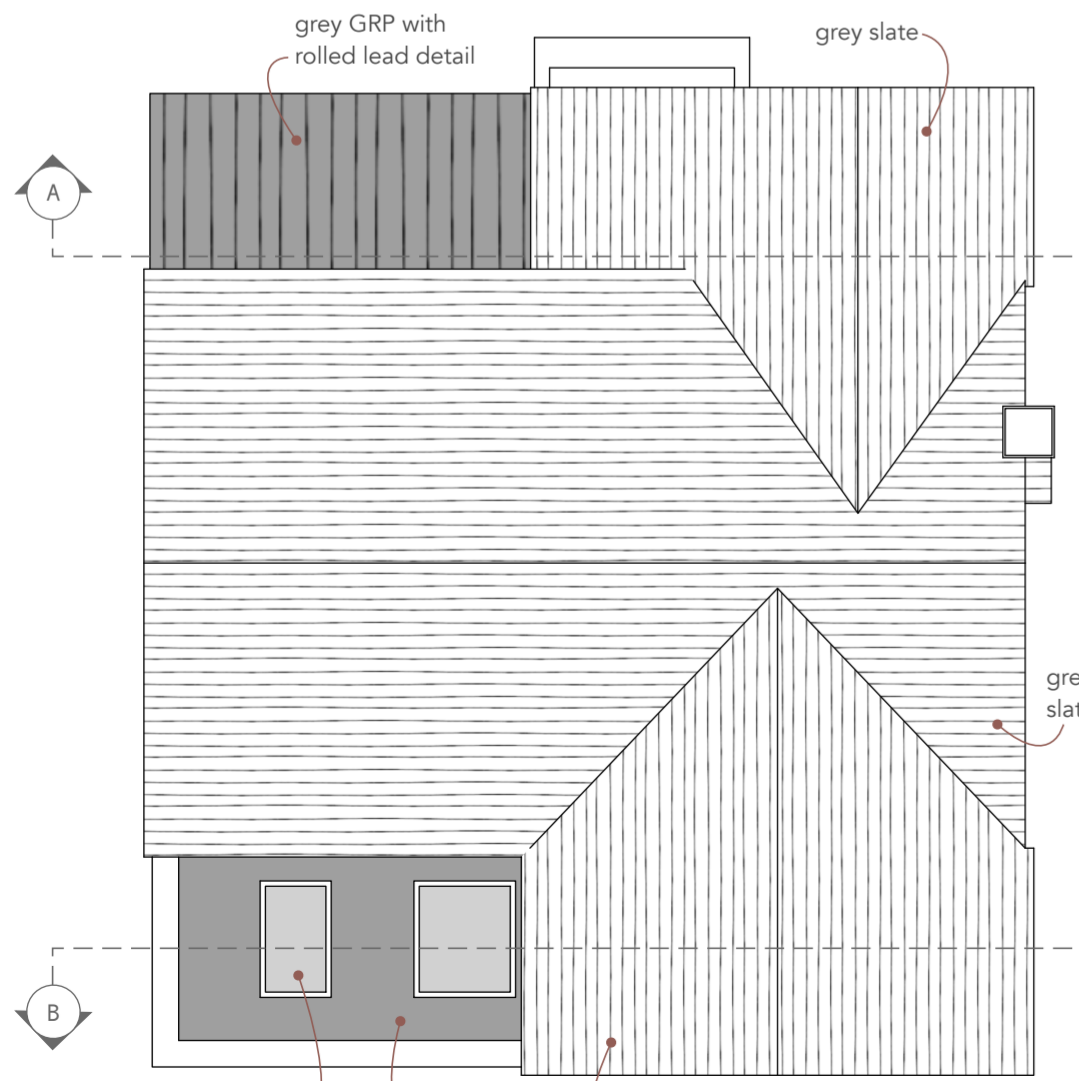
painted off-white render horizontal composite cladding **WEST ELEVATION**



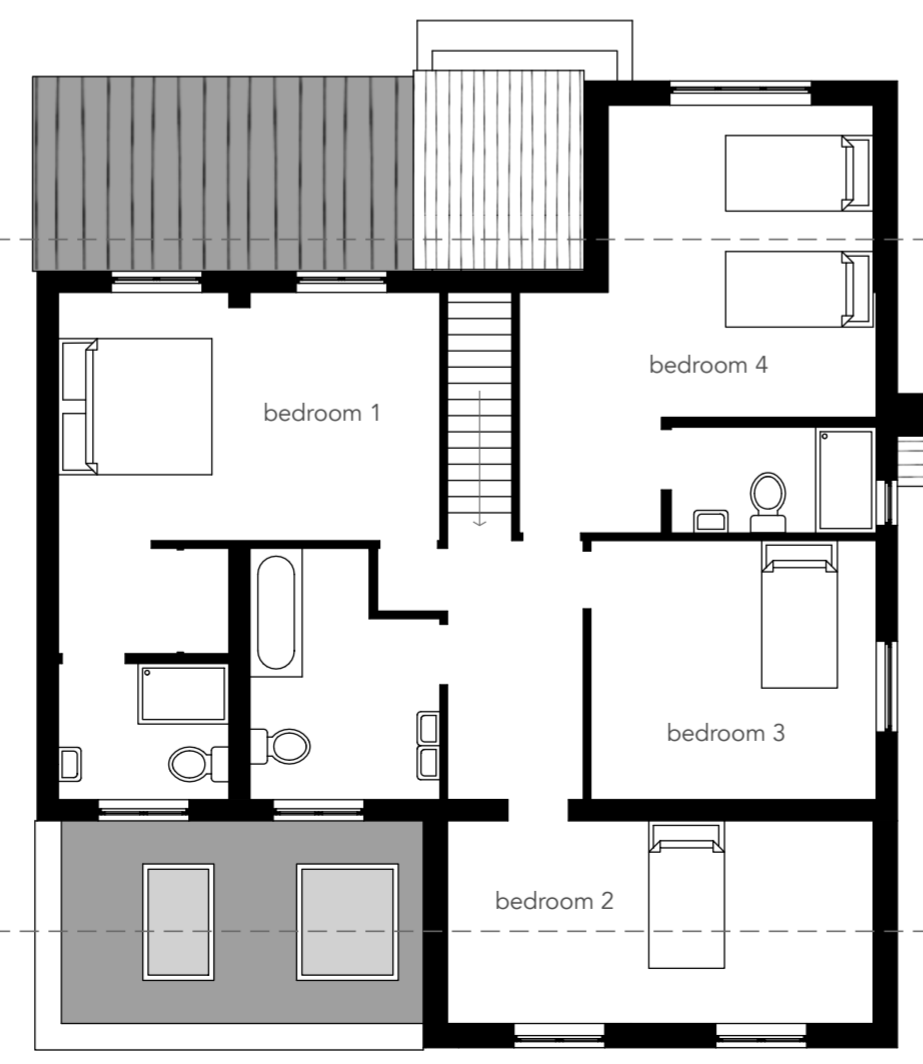
SECTION A - A



SECTION B - B



fixed rooflights grey GRP grey slate **ROOF PLAN**



FIRST FLOOR PLAN



GROUND FLOOR PLAN

0 scale 1 : 100 10m

all dimensions to be confirmed on site
all works to be carried out in accordance with current Building Regulations
drawings and design copyright of SE Architecture and may not be copied, altered or reproduced without authority

project:
**2, Walnut Close, Cheltenham
GL52 3AG**

drawing:
**3 : Proposed Plans and Elevations
1 : 100 on A2**

February 2024

SE Architecture
07814 68519
www.se-architecture.co.uk