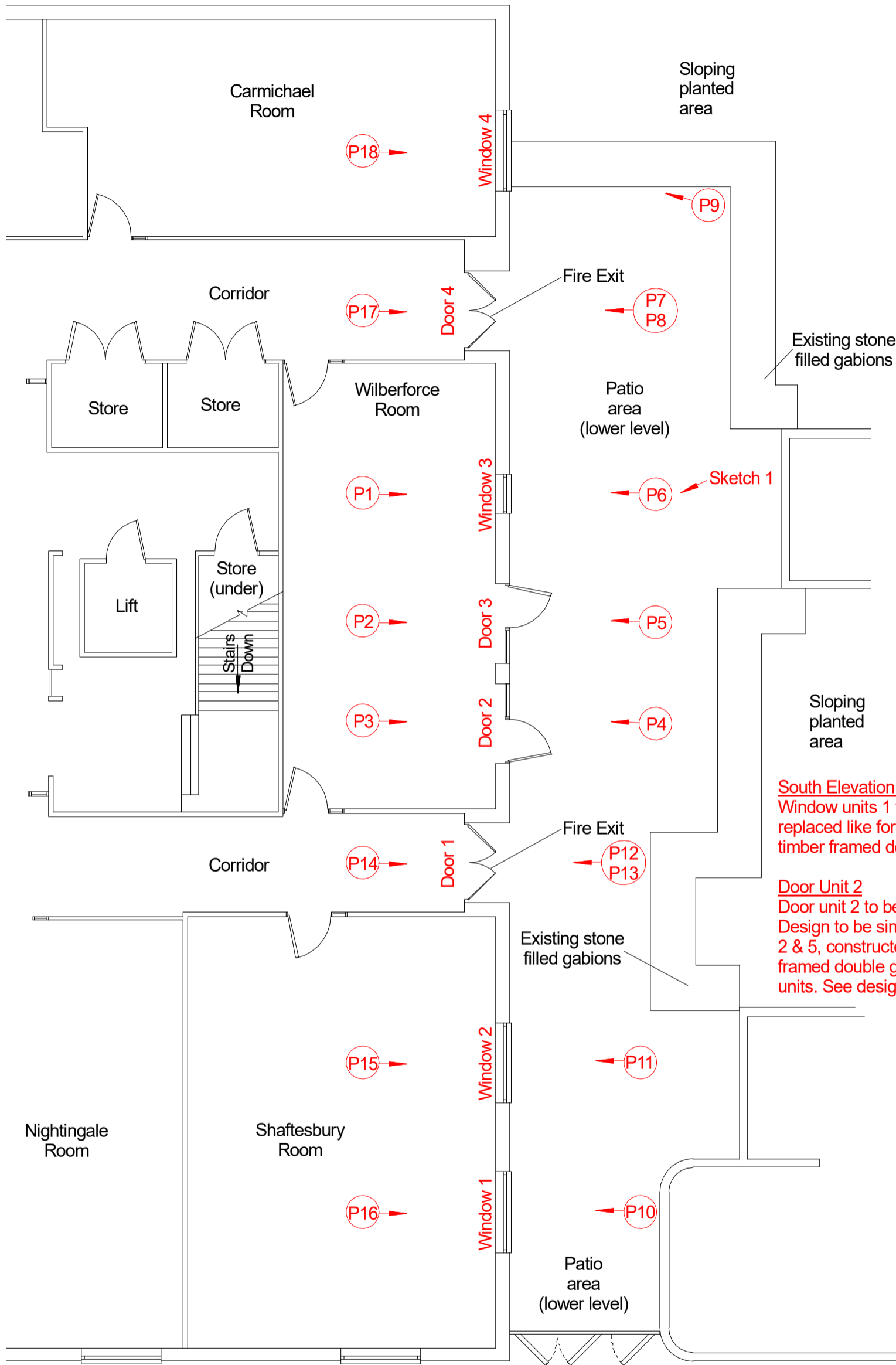


Metres
Scale 1:100 at A3



South Elevation Windows and Doors
Window units 1 to 4 and door units 1, 3 & 4 to be replaced like for like with painted hardwood timber framed double glazed units.

Door Unit 2
Door unit 2 to be changed to a windows only unit. Design to be similar in appearance to windows 2 & 5, constructed in painted hardwood timber framed double glazed units to match other new units. See design sketch 1

Photo locations are derived as follows P3 is photo 3, P4 is photo 4. Arrows show direction photo was taken.

Photo notes

- Photo 1, 2 & 3 (internal view) shows the existing painted timber glazed windows and doors to the Wilberforce room.
- Photo 4, 5 & 6 (external view) shows the existing painted timber glazed windows and doors to the Wilberforce room.
- Photo 7 (external view) shows the existing painted timber glazed doors to the Carmichael corridor.
- Photo 8 (external view) shows the existing painted timber glazed window to the Reception area.
- Photo 9 (external view) shows the existing painted timber glazed window to the Carmichael room.
- Photo 10 & 11 (external view) shows the existing painted timber glazed windows to the Shaftesbury room.
- Photo 12 (external view) shows the existing painted timber glazed windows to the Communal area.
- Photo 13 (external view) shows the existing painted timber glazed doors to the Shaftesbury corridor.
- Photo 14 (internal view) shows the existing painted timber glazed doors to the Shaftesbury corridor.
- Photo 15 & 16 (internal view) shows the existing painted timber glazed windows to the Shaftesbury room.
- Photo 17 (internal view) shows the existing painted timber glazed doors to the Carmichael corridor.
- Photo 18 (internal view) shows the existing painted timber glazed window to the Carmichael room.

Rev	Changes	Date
Title Existing Window & Door Locations Lower Ground Floor Plan South Elevation Alton Maltings		
Dwg No. AMALTDW03		
Client Grain House Trust		
Address Alton Maltings, Maltings Cl Alton, Hants, GU34 1DT		
CORNERSTONE PROPERTY DESIGN		
Drawn By Sean Jenkin		
Scale 1:100 AT A3		
Date Drawn 05/02/2024		Rev