

st peter's school

main dining hall and kitchen

P1

31-01-24



**brown
+ company**

1.0 contents

1.1	<i>existing condition and requirement</i>	3
1.2	<i>location</i>	4
1.3	<i>catering model</i>	5
1.4	<i>design</i>	6
1.5	<i>access</i>	7

Revision:P1

31-01-24

1.1 existing condition and requirement

1.1.1 requirement

This brief design and access statement is submitted in support of a Listed Building Application to modify the internal layout of Main School Dining Hall, St Peter's School, York.

St Peter's School is seeking to improve the efficiency of its catering model and therefore is proposing to renovate the main school dining room, improving efficiencies of the servery and kitchen and increasing the space available for dining.

Existing condition

Refer to Design and Heritage Statement by Ferry & Mennim submitted in support of this application for details of the history of the dining hall.

The existing servery and kitchen equipment is no longer fit for purpose. The school will be installing new kitchen equipment and servery equipment. To facilitate these works minor internal alterations are proposed to improve the layout and efficiency of the dining hall.



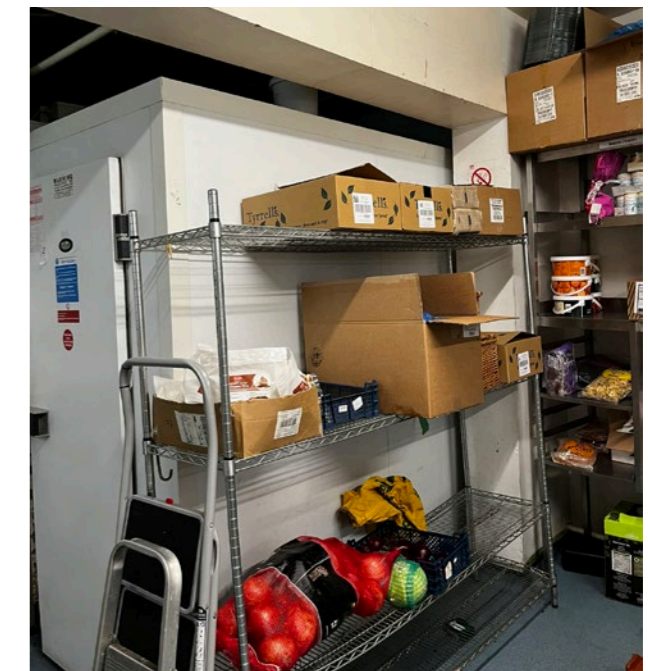
existing servery and seating highlighting space conflicts



existing kitchen equipment at the end of useable life



existing kitchen equipment at the end of useable life



existing storage and cold storage challenges

1.2 location

1.2.1 clifton conservation area

The proposal is for internal alterations to the dining hall at St Peter's School.

The building is located within the Clifton Conservation Area, however the proposals are internal only and will not impact on the Conservation Area.

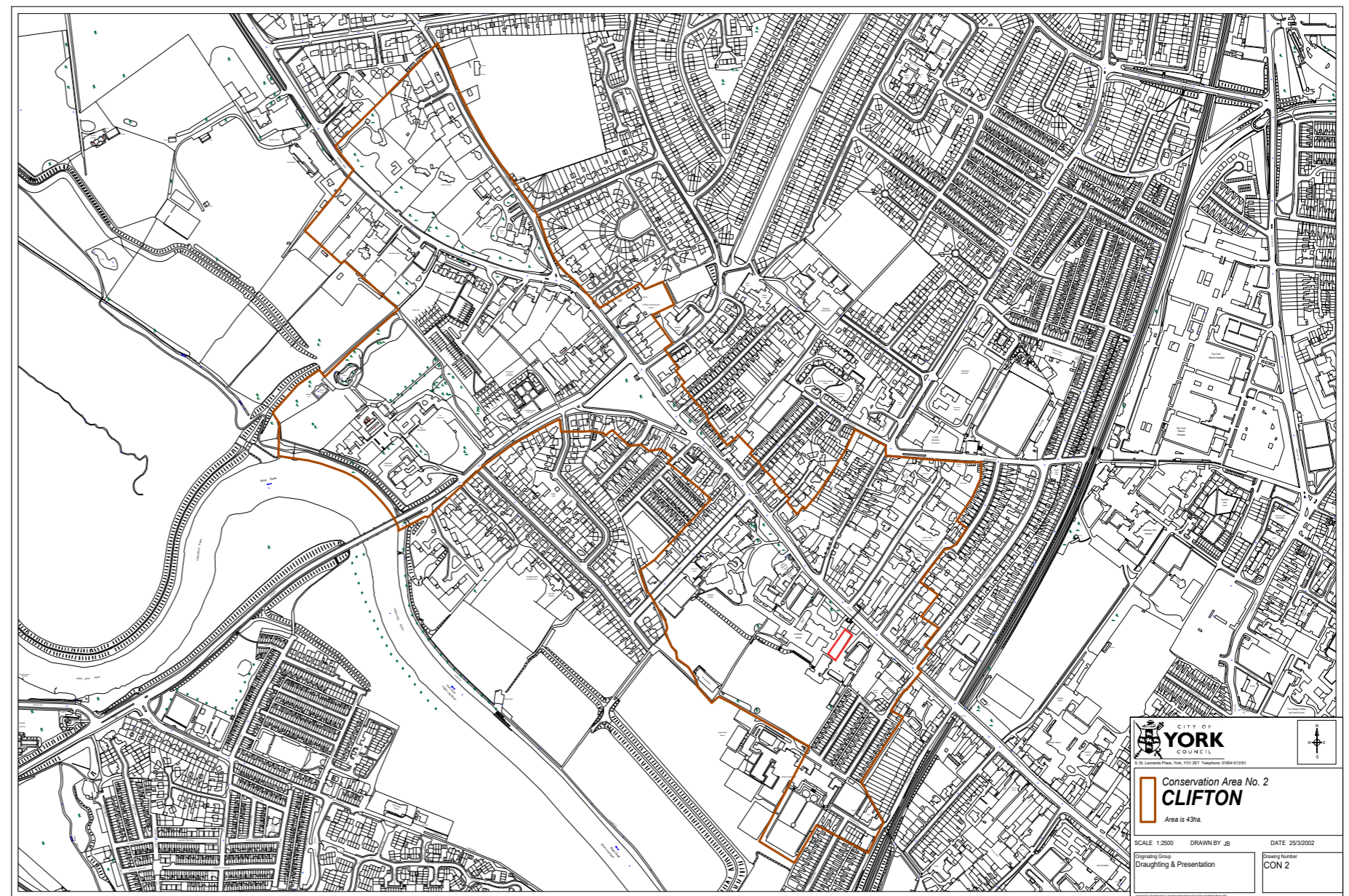
The information provided in this Design and Access Statement is appropriate for the size and nature of the proposals.



extract of clifton conservation area map showing site in red and various grade II listed properties including;

lodge at st peter's school, schoolhouse at st peter's school, hall range and chapel at st peter's school, range approximately 10 metres north west of the chapel at st peter's school, former memorial gymnasium at st peter's school

all grade II:

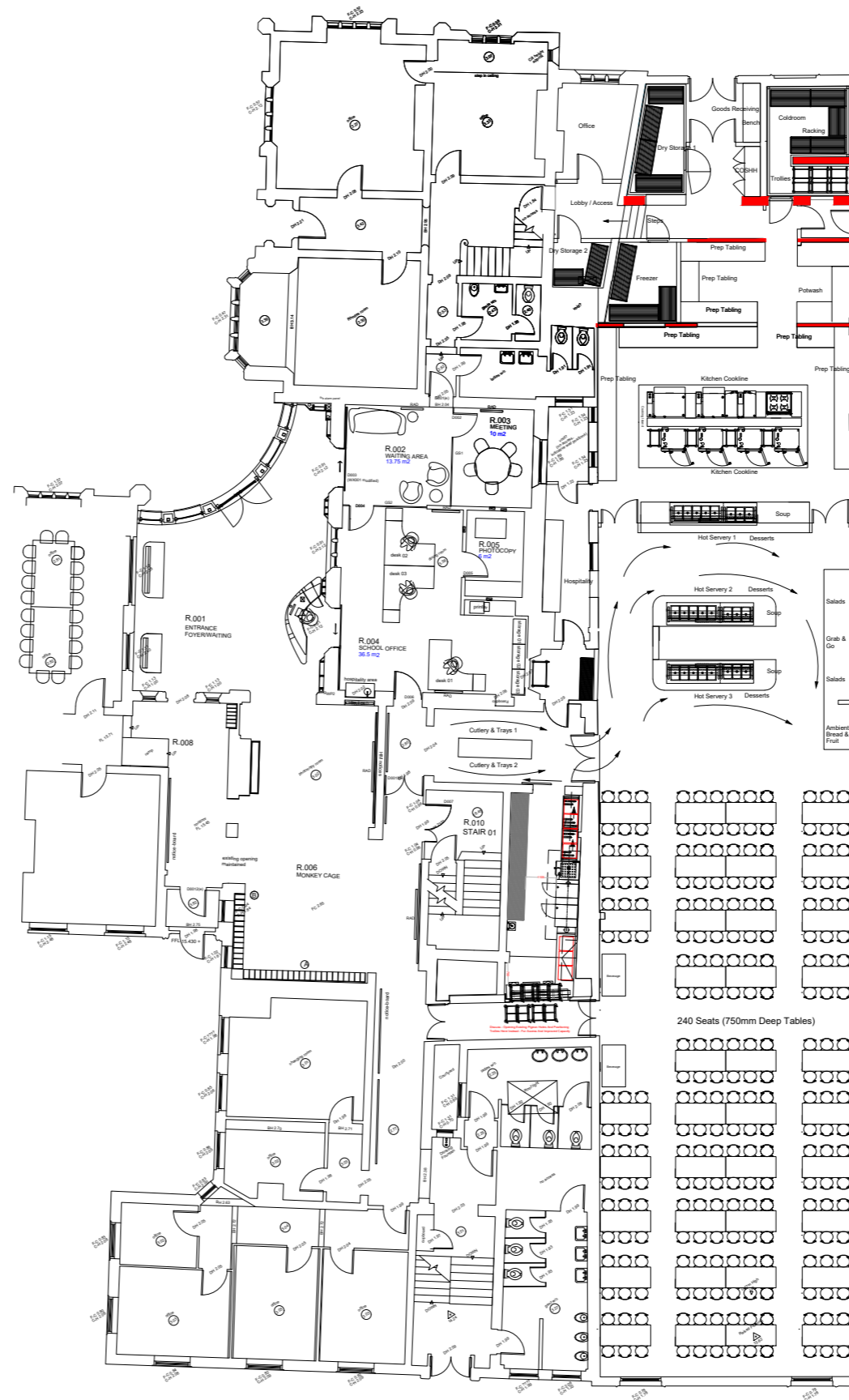


1.3 catering model

1.3.1 illustrative internal layout

The proposed works are required to allow for a more efficient kitchen and servery layout, this in turn will allow for a more efficient layout of the dining hall. The kitchen equipment will remain broadly within the existing location and this will allow for existing roof and wall ventilation penetrations to be utilised.

The plan on this page is illustrative and shows the revised servery and kitchen layout.



illustrative plan and internal layout describing the revised servery and kitchen area

1.4 design

1.4.1 extent of demolition

The plan on this page show the extent of demolition proposed, refer to the design and heritage document for a full analysis of the proposals.

The elements proposed for removal are largely non-structural, later additions to the dining hall with little heritage value.



demolition plan showing limited scope of works

1.5 access

1.5.1 access arrangements

Pedestrian access:

The existing level access into and out of the dining hall will be retained, the amount of servery space will be increased, allowing better access for users.

Vehicular access will be unaffected by the proposals.

Servicing to the kitchen will continue to be via Clifton as the existing situation, this retains the current separation of servicing and pupils. This access point will continue to be controlled and deliveries to and from the dining room will continue to be via the school's on site "buggies"

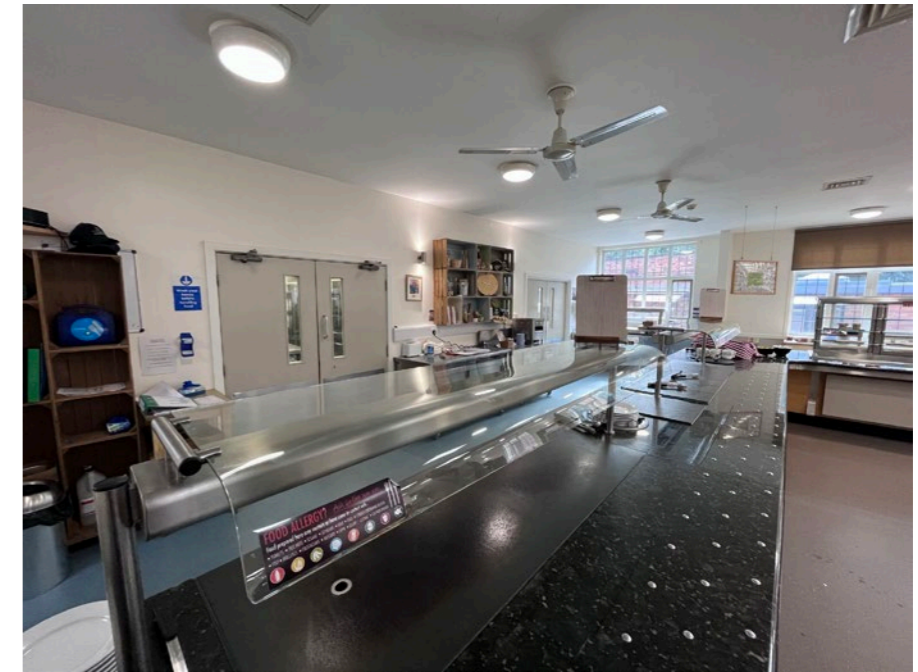
The external bin store and collection arrangements will remain as existing.

Conclusion

The alterations proposed are minor in nature with no impact on the heritage value of the dining hall. The changes will facilitate a new kitchen layout which will improve energy and space efficiency.



existing level access into the dining hall



existing access to the servery



existing service access to be retained



existing level surface across the dining hall, step at far end to be removed

brown+company

info@brownandcompany.uk
www.brownandcompany.uk