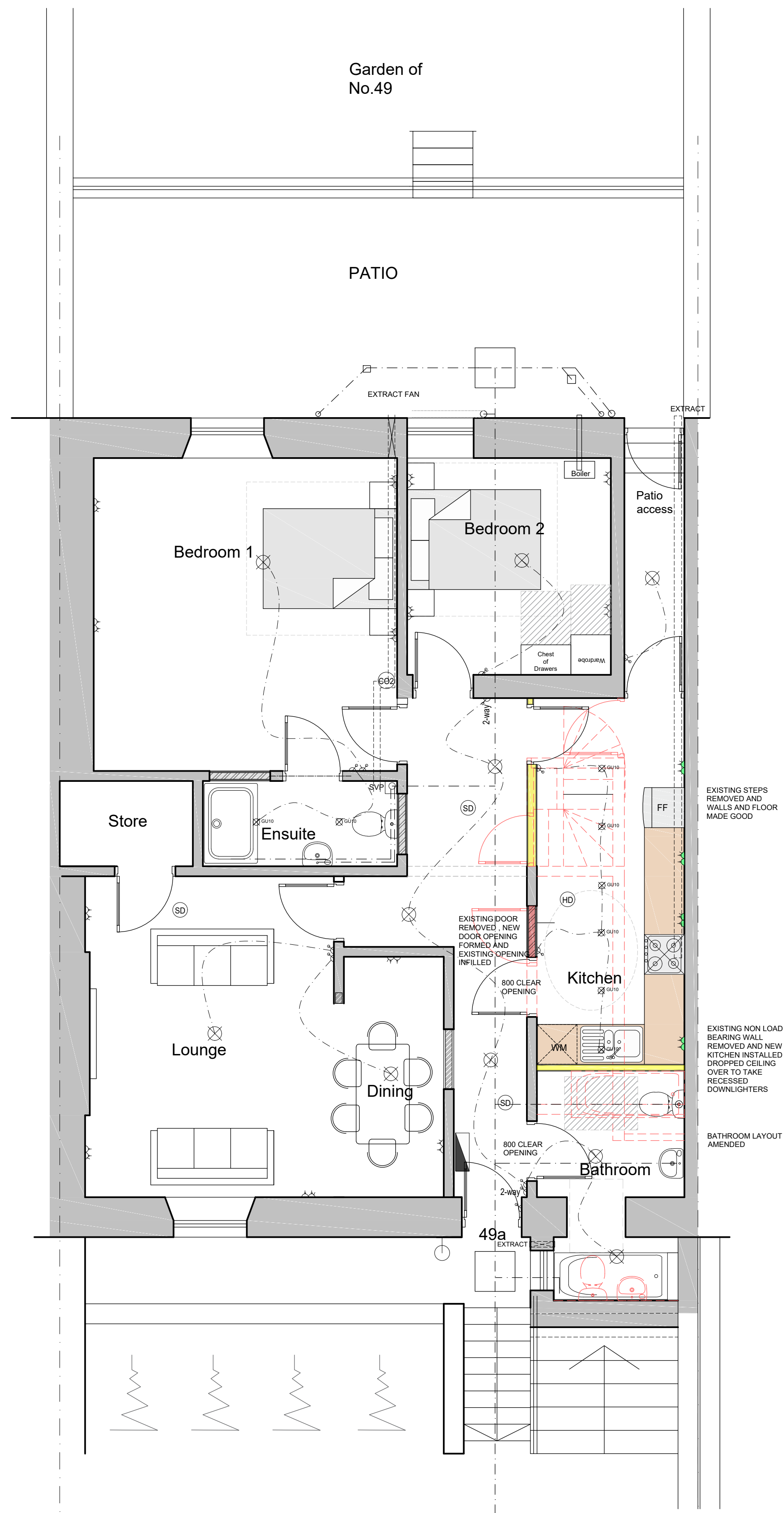


NOTE:
 All proprietary goods and materials are to be fitted in accordance with manufacturer's instructions, Codes of Practice and British Standards. All dimensions to be verified by the Contractor on site. Do not scale drawings, work to figured dimensions only.

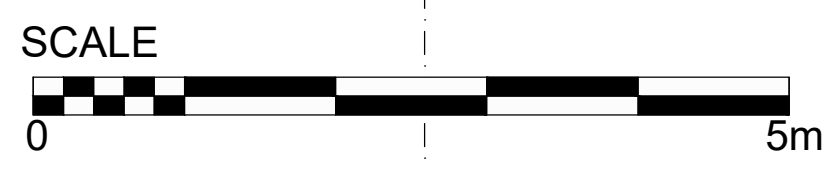
This drawing remains the Copyright of Foun+Bell Architects Ltd. and may not be reproduced in whole or in any part without prior written permission.

REVISION / DESCRIPTION / DATE		
A	WARRANT AMENDMENTS	JUNE 23
B	AOW REVISION	JAN 24



ELECTRICAL LEGEND	
Double 13a socket outlet	
Single 13a socket outlet	
Double 13a socket outlet above w/top	
5A socket outlet	
13a socket outlet below w/top switched above w/top	
13a spur outlet	
Shaver socket	
Cooker switch and 13a socket	
Light switch	
Light switch - Dimmer	
Light switch - Two way	
Ceiling rose outlet	
White GU10 recessed light (LED)	
White 50watt low voltage light	
Wall mounted external (pir) light fitting	
Wall mounted light fitting	
Batten holder	
Lumitron or equal surface mounted 2 x 40 watt fluorescent fittings - with diffuser	
Passive Infra Red wall mounted	
Wall mounted luminaries	
Mirror light	
Recessed single gimble fitting	
Recessed twin gimble fitting	
Telephone point	
TV coaxial socket outlet	
Optical Smoke detector	
Smoke detector	
Heat detector	
Carbon Dioxide detector	
Carbon Monoxide detector	
Doorbell	
LED Light strip	
TV coaxial socket outlet	

Proposed Basement Floor Flat Plan



Drawing Status

LBC

Raymond Bryan
 Architecture - Design - Planning
 1 John's Place
 Edinburgh
 EH6 7EL
 Tel: 0131 4787100
 Mob: 07917 192 905
 Email: raymondbryan1@hotmail.com

CLIENT

R & D Developments

PROJECT

**PROPOSED ALTERATIONS
 Basement Flat 49 PORTLAND STREET
 EDINBURGH
 EH6 4AZ**

SCALE@A1 1:50 @ A1 - 1:100 @ A3	DATE June 2023
DRAWN BY rb	CHECKED rb
STAGE Warrant	

DRAWING

BASEMENT PLANS

PROJECT NUMBER 2301	DRAWING NUMBER BW-01	REVISION B
-------------------------------	--------------------------------	----------------------