

Middle House, The Street, Chelsworth, Ipswich Suffolk IP7 7HU

Application for Listed Building Consent - Creation of en-suite to first floor bedroom

3. Prior to the installation of any mechanical ventilation, SVP and external pipework of the hereby approved works; manufacturer's specification and annotated photographs (context and detail) of the proposed internal and external location of the mechanical ventilation, SVP and external pipework, shall be submitted to and approved, in writing, by the Local Planning Authority and shall thereafter be entirely implemented as approved.

Series of photographs to show the current external pipework configuration.



Extract from Location plan with series of photos of the relevant elevation to review the impact of the development to the Heritage Asset.(NTS)

Details to discharge Condition 3 of Application Ref: DC/23/02064

View A – From the Street



Details to discharge Condition 3 of Application Ref: DC/23/02064

View B – From Front Gate



View C – Existing External pipework



Details to discharge Condition 3 of Application Ref: DC/23/02064

View D From backdoor towards the front gate.



Assessment

The first two photos (View A) shown from the street, show that all the existing external pipework is concealed at the back of the house and so the impact on the overall aesthetics of the building will be negligible. There is no impact on the surrounding conservation area.

View B and C show views of the elevation of the proposed work, which has the concentration of existing pipework.

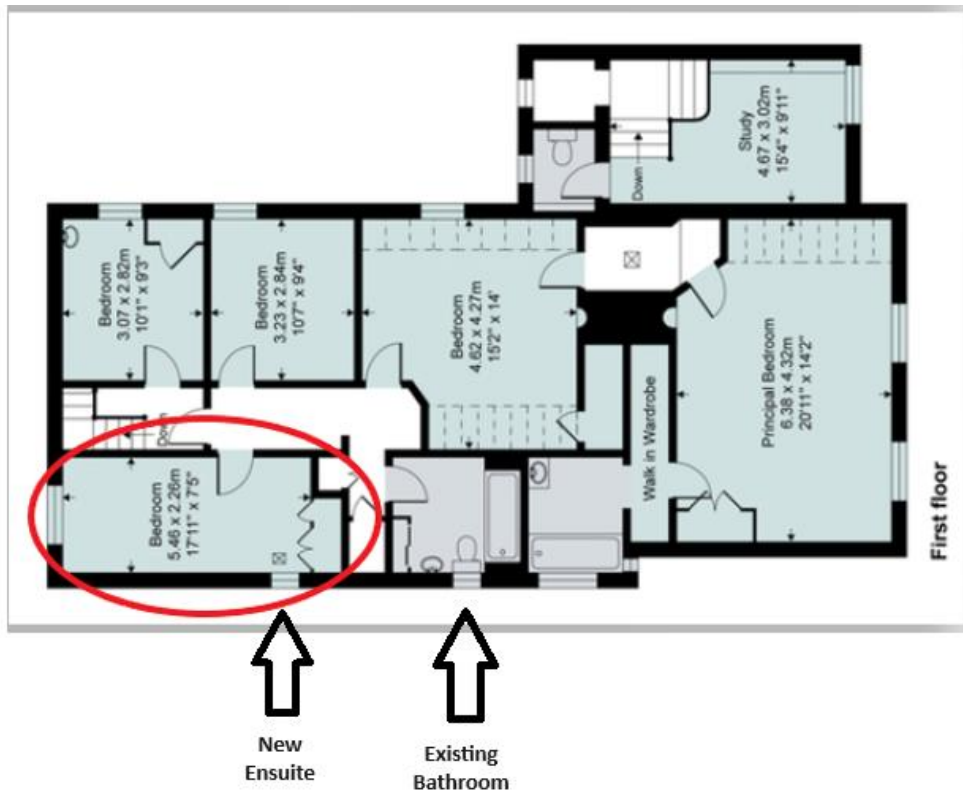
View D looks back from the back door towards the street and includes the positioning of the new ensuite and the existing bathroom windows. This point has further been detailed on the following page.

The proposed connections and pipework will predominantly be internal from the existing bathroom and any external pipes and connections will be integrated with the existing pipework.

The key priority is not to impact the listed heritage and this was key to the review for the installation of the ensuite bathroom. The impact will be negligible.

Details to discharge Condition 3 of Application Ref: DC/23/02064

The proximity of these rooms and the associated pipework is shown below:



Extract from the floor plan,



Existing pipework showing proximity of the proposed works.