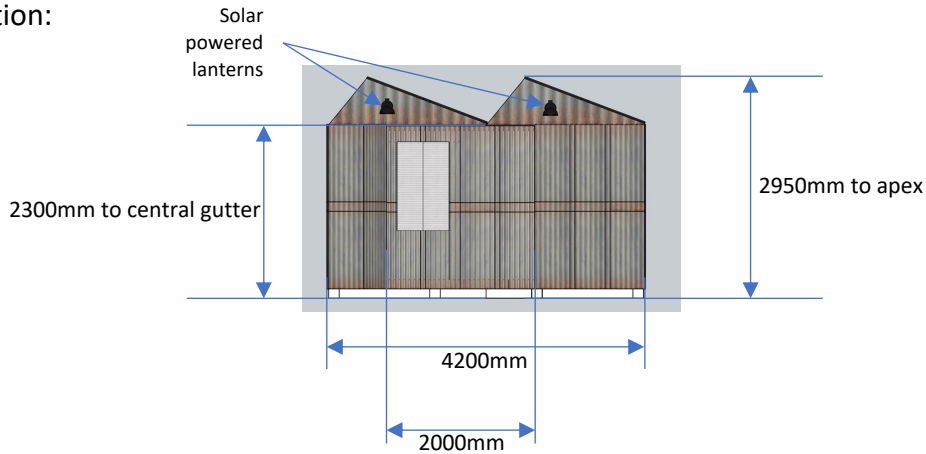
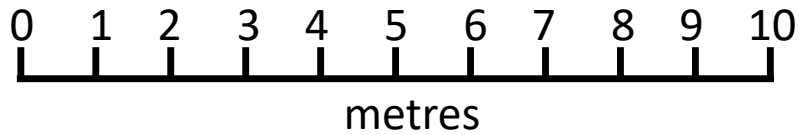


Front Elevation:

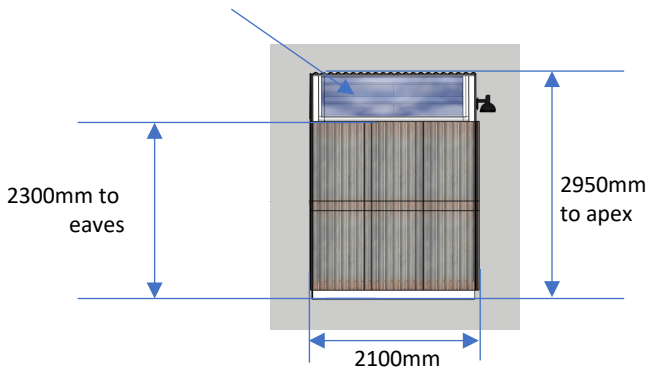


2 off 1000mm (w) x 2150mm (h) outward opening doors.
 LH door contains a recycled sealed unit panel with
 integral venetian blind. 700mm (w) x 1200mm (h). The
 window unit is non-opening.



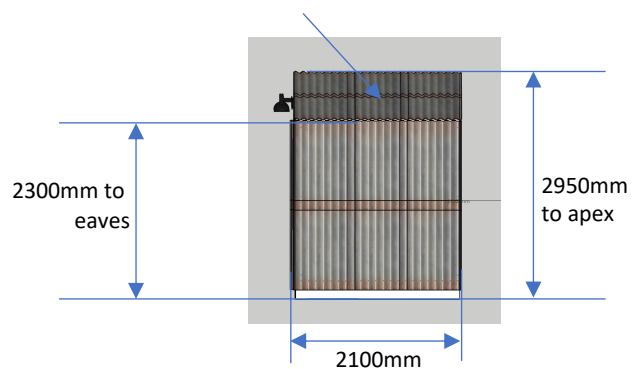
Side Elevation N:

Both N-Facing roof segments include non-opening clerestory skylights made from recycled sealed unit sliding door panels. They provide natural light inside the shed without direct sunlight. Each skylight is 1780mm (w) x 650mm (h)

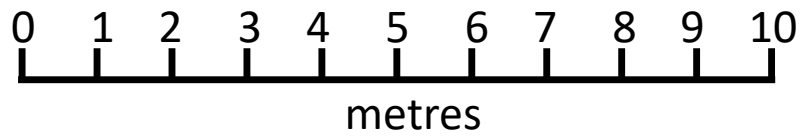
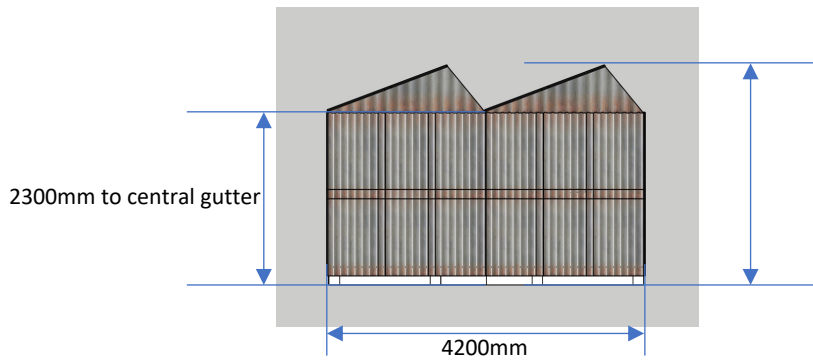


Side Elevation S:

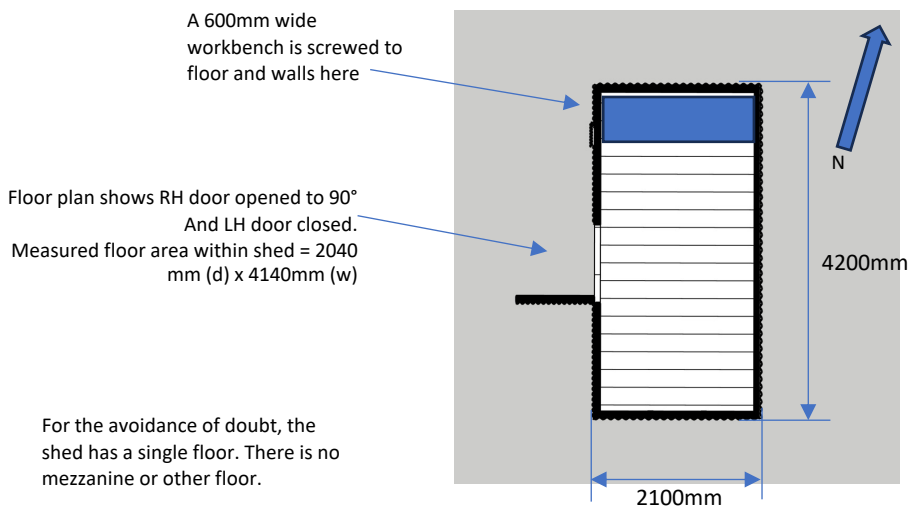
The Southerly S-Facing roof segment will have a single solar panel mounted with a 30mm airgap to provide power for internal and external lights, plus low power 240VAC via an inverter for cordless tool charging. The solar panel is 1485mm (w) x 668mm (h) x 30mm (d).



Rear Elevation:

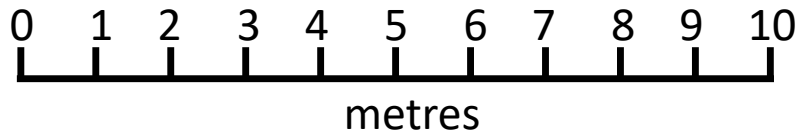
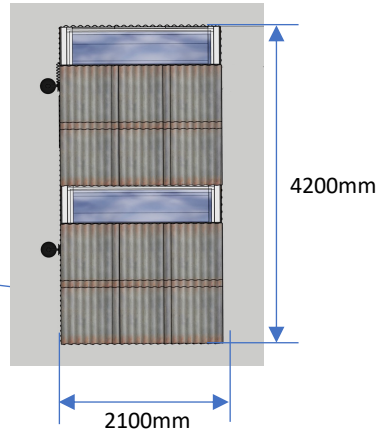


Floor Plan:

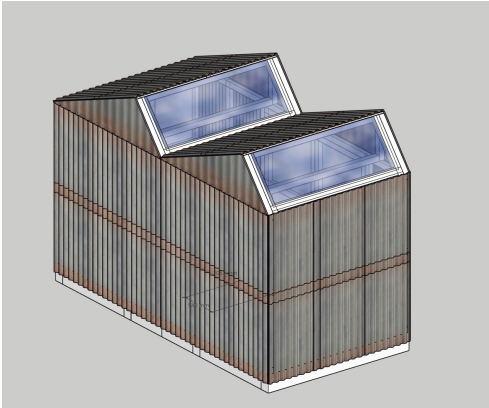


Plan view:

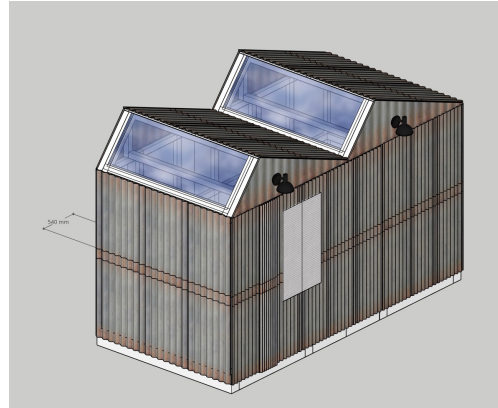
The Southerly S-Facing roof segment will have a single solar panel mounted with a 30mm airgap to provide power for internal and external lights, plus low power 240VAC via an inverter for cordless tool charging. The solar panel is 1485mm (w) x 668mm (h) x 30mm (d).



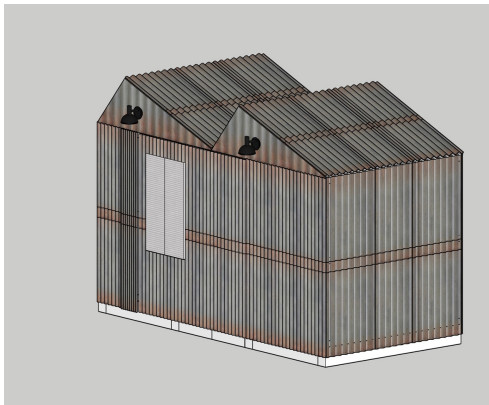
Isometric projections at 3rd angle for interpretation, viewed from, not to scale:



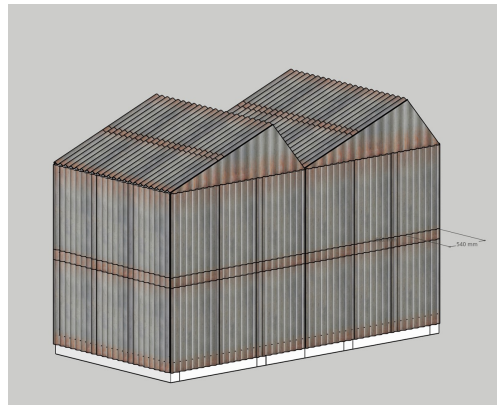
Approximate North



Approximate West

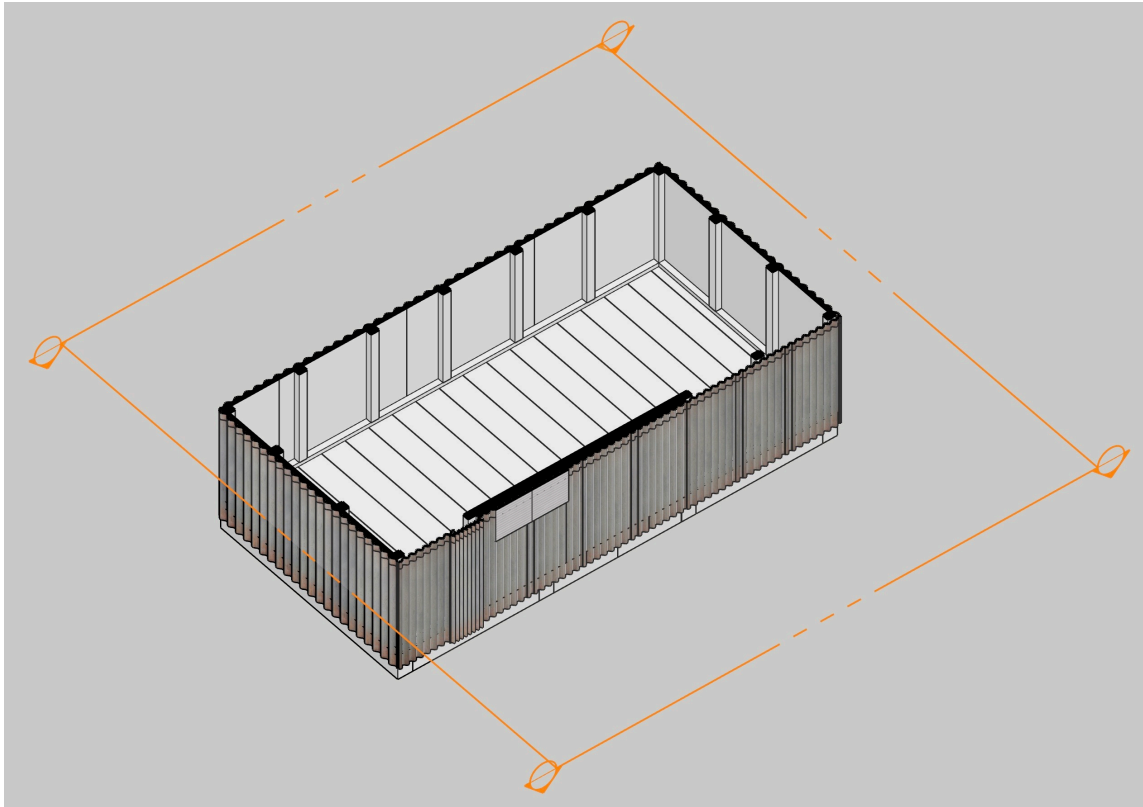


Approximate South

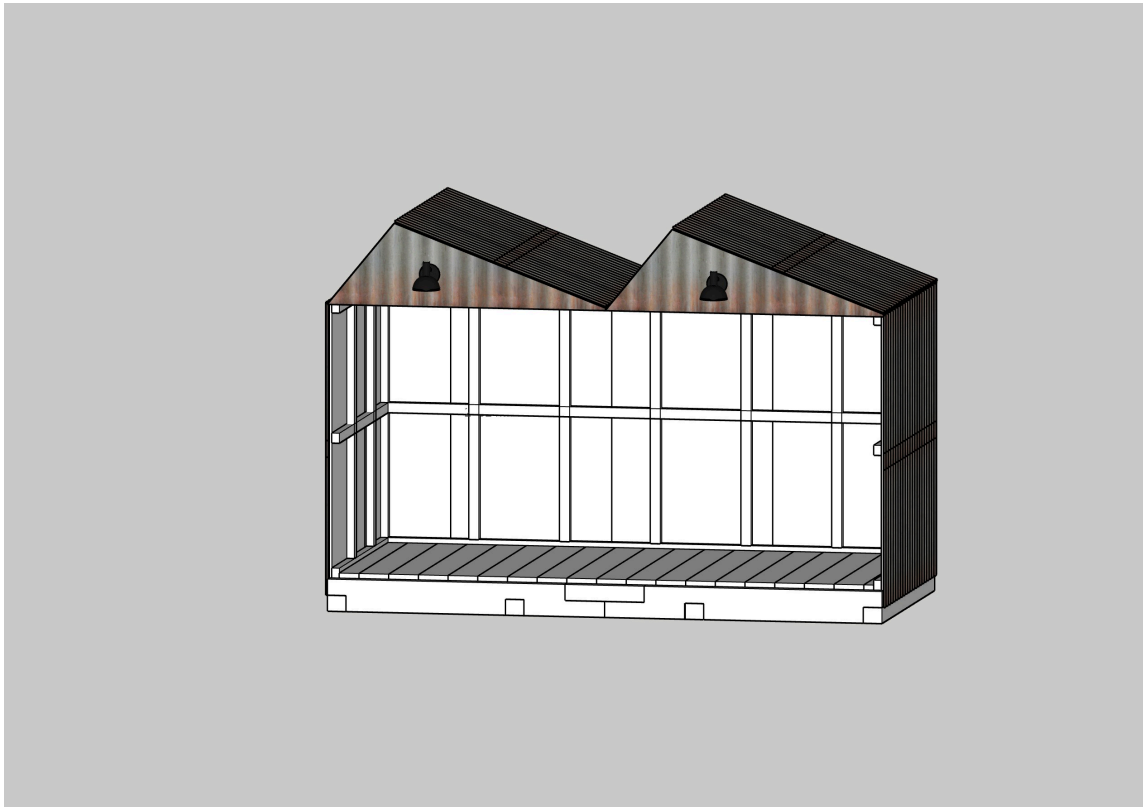


Approximate East

Horizontal and vertical sections, not to scale:



Horizontal cross section.



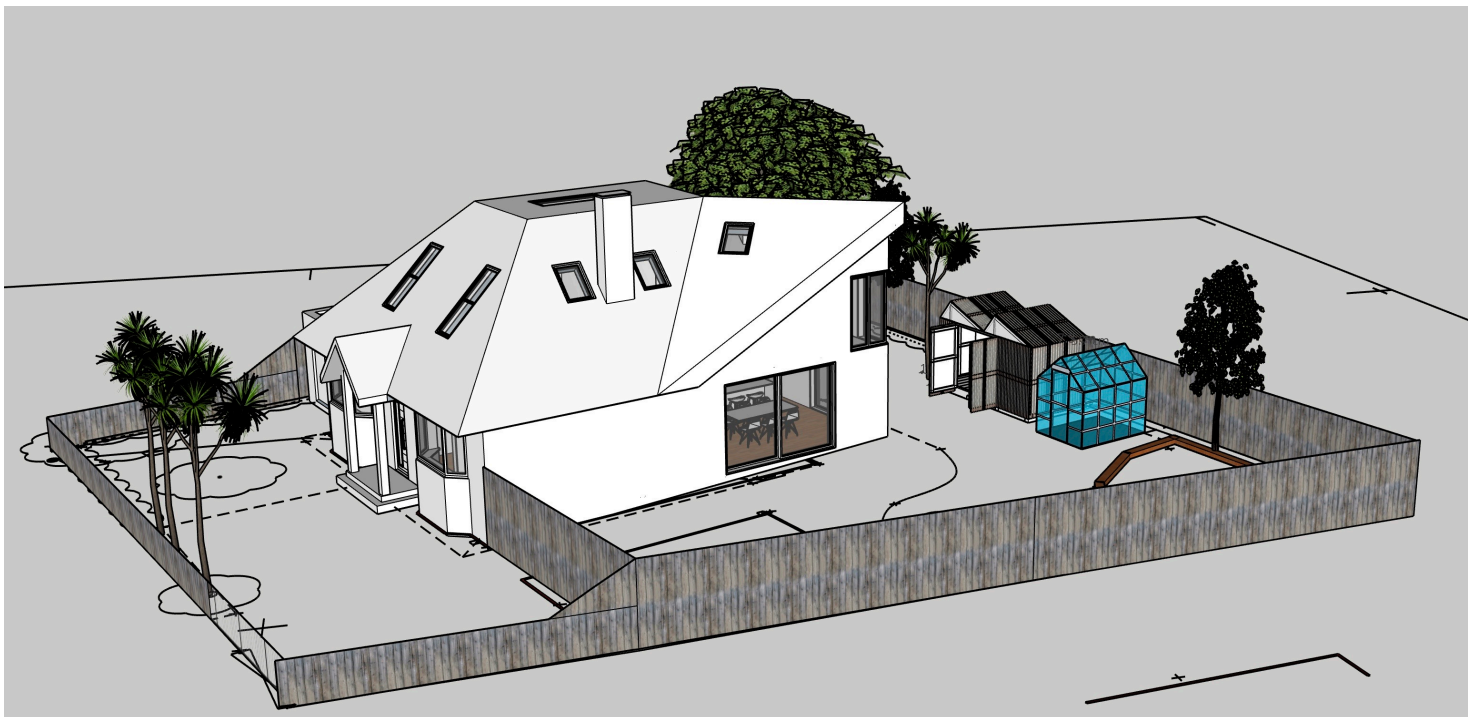
Vertical cross section.

Note: Cross sections do not show fitted workbench at N end of shed. 1000mm (h) x 600mm (d) x 1780mm (l). This is located to be under the N clerestory skylight to give good light and will be used for garden potting and tool maintenance

“Street Scene” views for context, viewed from North and South, Trees not to scale:



View from approximate North



View from approximate South