

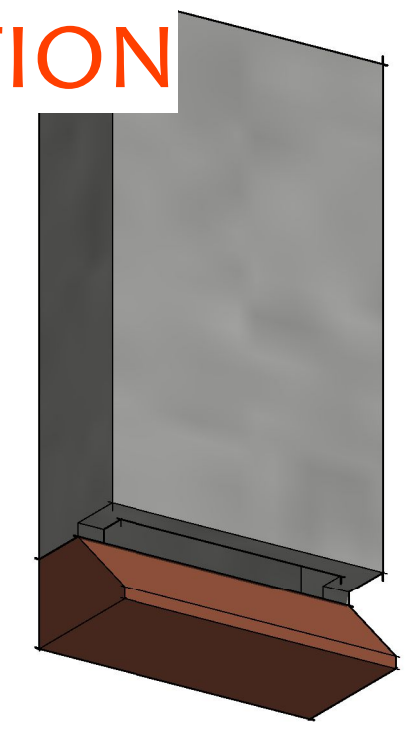
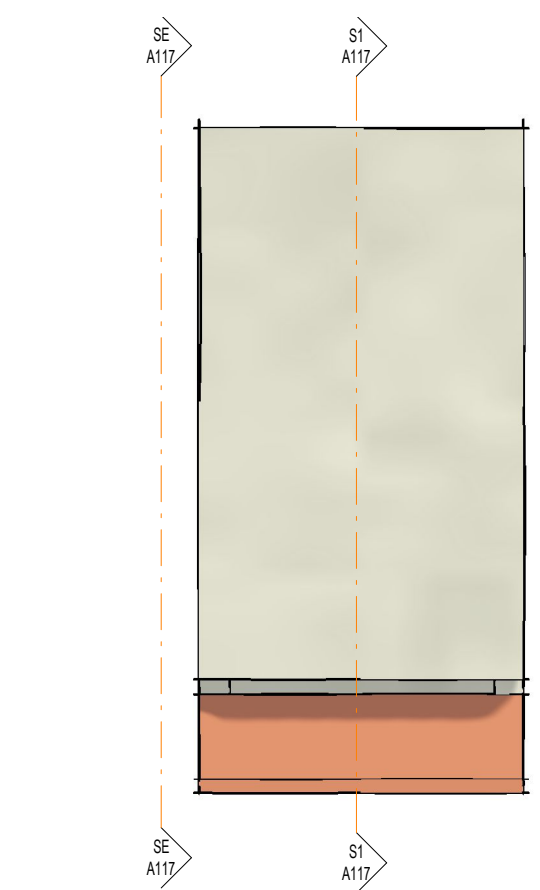
Revisions

Notes

- THIS DOCUMENT IS COPYRIGHT OF THE ORGANISATOR AND MUST BE TREATED AS CONFIDENTIAL.
- THIS DOCUMENT MUST NOT BE REPRODUCED OR DISTRIBUTED WITHOUT WRITTEN CONSENT OF THE ORGANISATOR.
- THIS DOCUMENT MUST NOT BE ALTERED. THE ORGANISATOR ACCEPTS NO RESPONSIBILITY FOR ANY DISCREPANCIES ARISING AS A RESULT OF THE ORGANISATOR'S INFORMATION BEING ALTERED OR CHANGED.
- ANY DISCREPANCY MUST BE REPORTED TO THE ORGANISATOR.
- DO NOT SCALE THIS DOCUMENT. USE DIMENSIONS PROVIDED ONLY.
- ALL DIMENSIONS MUST BE CHECKED ON SITE PRIOR TO COMMENCEMENT OF ANY RELATED WORKS.
- THIS DOCUMENT MUST BE READ IN CONJUNCTION WITH ALL SUPPORTING DOCUMENTS PROVIDED BY THE ORGANISATOR AND OTHER PROJECT STAKEHOLDERS.
- THE ORGANISATOR ACCEPTS NO RESPONSIBILITY FOR THE ACCURACY OF MEASUREMENT INFORMATION PROVIDED BY THIRD PARTIES. THIS MUST BE TREATED AS INDICATIVE ONLY.
- USER OF THIS DOCUMENT WILL BE RESPONSIBLE FOR CHECKING WHETHER REVISIONS IS CORRECT.
- THIS DRAWING IS FOR REFERENCE PURPOSES ONLY. THE ORGANISATOR WILL ACCEPT NO RESPONSIBILITY FOR THE COMPLETENESS OF INFORMATION UNDER THESE TERMS.
- THE DOCUMENT STATUS "FOR INFORMATION" OR "PRELIMINARY" INDICATES THAT THE ORGANISATOR HAS NOT YET VERIFIED THE INFORMATION PROVIDED. THE ORGANISATOR WILL ACCEPT NO RESPONSIBILITY FOR THE COMPLETENESS OF INFORMATION UNDER THESE TERMS.
- THE DOCUMENT STATUS "FOR COPY" OR "FOR BUILD" HAS BEEN PREPARED, IN PART, BASED ON INFORMATION PROVIDED BY OTHERS. WHILE THE ORGANISATOR IS BELIEVED TO BE RELIABLE, THE ORGANISATOR ACCEPTS NO RESPONSIBILITY FOR THE ACCURACY OF THE "FOR COPY" OR "FOR BUILD" DOCUMENTS OR FOR ANY ERRORS OR OMISSIONS THAT MAY HAVE BEEN INCORPORATED INTO IT AS A RESULT OF THE INFORMATION PROVIDED TO THE ORGANISATOR. THESE TERMS RELY ON THE "FOR COPY" OR "FOR BUILD" DOCUMENTS AND ARE NOT TO BE USED FOR ANY OTHER PURPOSES WITHOUT THE ORGANISATOR'S WRITTEN PERMISSION.

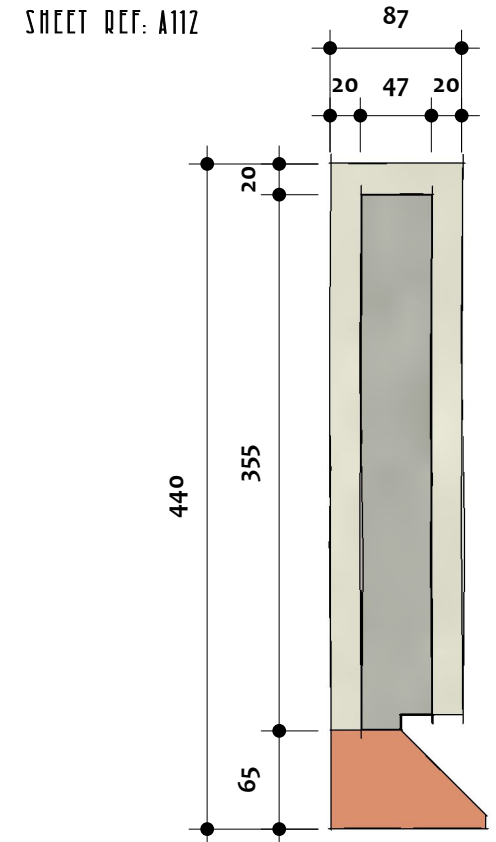


PLANNING APPLICATION

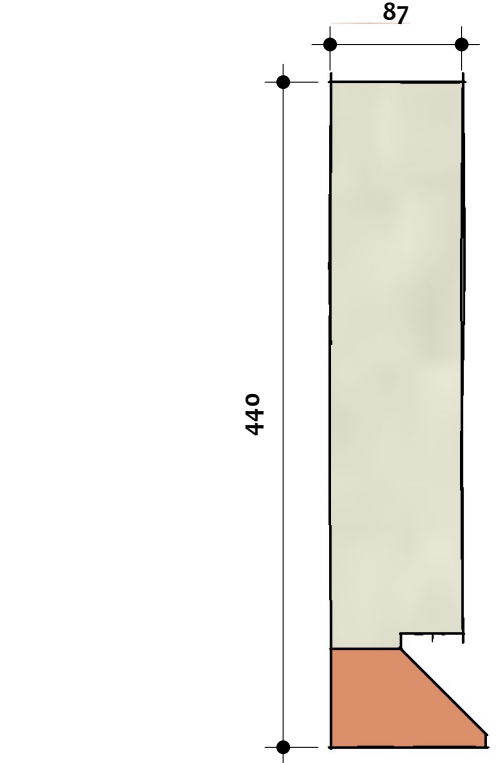


3D 3D BAT ROOSTING SCALE

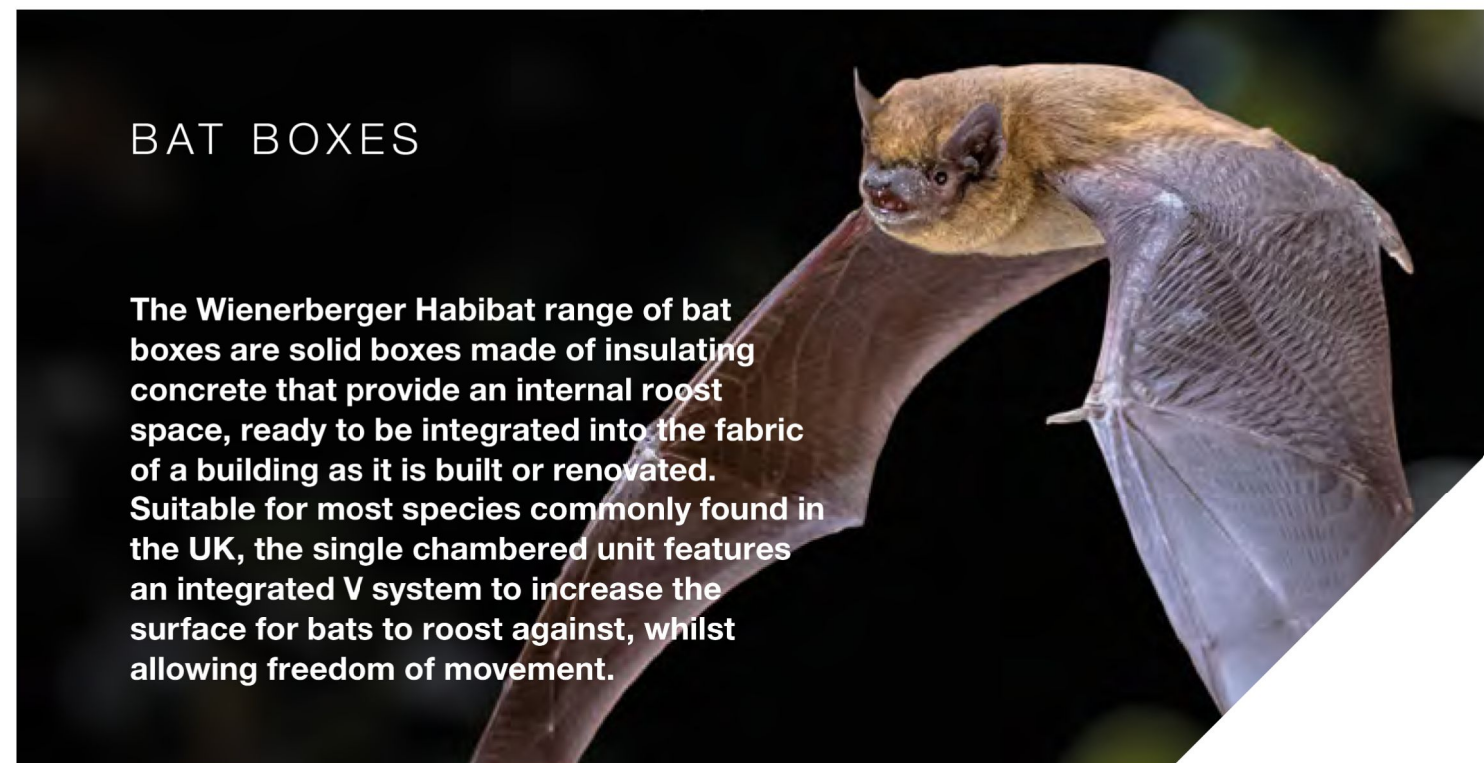
1 BAT ROOSTING BOX SCALE 1:3



S1 SECTION S1 SCALE 1:3



SE SIDE SCALE 1:3



BAT BOXES

The Wienerberger Habitat range of bat boxes are solid boxes made of insulating concrete that provide an internal roost space, ready to be integrated into the fabric of a building as it is built or renovated. Suitable for most species commonly found in the UK, the single chambered unit features an integrated V system to increase the surface for bats to roost against, whilst allowing freedom of movement.

There are various sizes to choose from



Habitat Premium Bat Box
 ■ **Dimensions** 440mm wide x 440mm high x 102mm deep
 ■ **Material** Concrete plus facing brick

With its stretcher bond facing detail, the Premium Bat Box can be discreetly integrated into your design. Faced with any brick (from Wienerberger and other manufacturers) of your choice to ensure an aesthetically pleasing finish.



Habitat Bat Box
 ■ **Dimensions** 215mm wide x 440mm high x 102mm deep
 ■ **Material** Concrete plus brick facing

The Wienerberger Habitat Bat Box has the same internal configuration as the Habitat Premium bat box, the only difference is that this version is finished with a stack bond facing brick detail.

Also available in smaller formats



Habitat Three Course Bat Box
 ■ **Dimensions** 215mm wide x 215mm high x 102mm deep
 ■ **Material** Concrete plus facing brick



Habitat Four Course Bat Box
 ■ **Dimensions** 215mm wide x 290mm high x 102mm deep
 ■ **Material** Concrete plus facing brick

Temporary bat boxes

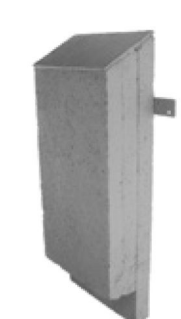


Should sites have to demolish existing buildings to make way for new development they may have to provide temporary bat roosts through construction. Wienerberger Habitat are able to supply temporary bat boxes. (Note: 5mm steel post required.)

Habitat Rocket Box (only used by crevice dwelling bats)

- **Dimensions** 300mm wide x 1200mm height 300mm deep.
- **Material** 19mm high quality plywood

Retro-fitted bat boxes



Many companies including Wienerberger Habitat are seeking to improve net biodiversity gain on existing buildings. Wienerberger Habitat are currently supplying a number of customers with retro-fit bat boxes. Our externally mounted bat box are a perfect external retrofit option.

Habitat Concrete External Mounted Box (only used by crevice dwelling bats)

- **Dimensions** 215mm wide x 450mm height x 102.5mm deep
- **Material** Concrete

Maternity bat boxes



To accommodate bats during the breeding season, we also produce the Wienerberger Habitat Maternity Bat Box which is more specific to their needs during this time. It features one larger access point and enhancements to the inner workings for ease of movement.

Habitat Maternity Bat Box

- **Dimensions** 215mm wide x 440mm high x 102mm deep
- **Material** Concrete plus facing brick

The Habitat Maternity Roost Box range, is a variation of our existing integrated Bat Box range, featuring significant alterations that aim to provide a stable environment for bats and their off spring. Aesthetically, these products appear no different than the current products, however they feature one access point (instead of two), and enhancements to the inner workings in order to provide comfortable roost space for the species, during the breeding season.

