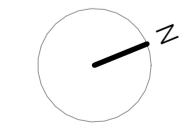
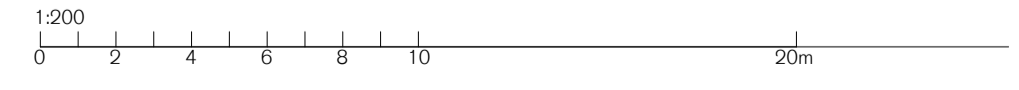
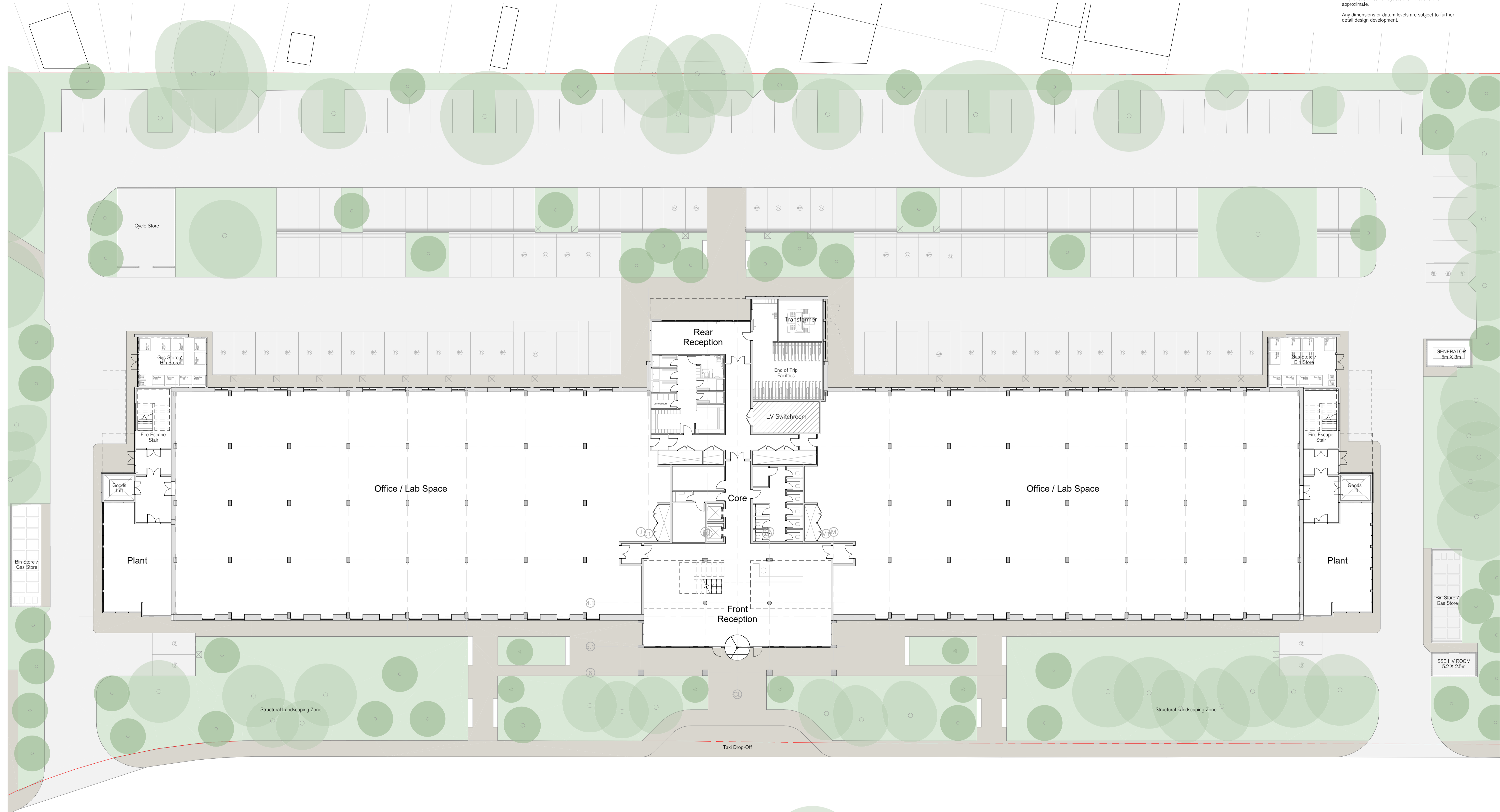


GENERAL NOTES

All architectural drawings should be read in conjunction with reports by other consultants submitted along with the application.
 All proposed internal layouts are indicative and approximate.
 Any dimensions or datum levels are subject to further detail design development.



SPRATLEY & PARTNERS
 7 CENTENARY BUSINESS PARK, STATION ROAD, HENLEY-ON-THAMES, OXFORDSHIRE RG9 1DS. 01491 411277
 ISSUED ONLY FOR THE PURPOSE INDICATED. THIS DRAWING TO BE READ IN CONJUNCTION WITH ALL
 CONSULTANTS INFORMATION. ALL DIMENSIONS TO BE CHECKED ON SITE. DO NOT SCALE. THIS DRAWING IS
 COPYRIGHT.

| REV | ISSUED | DESCRIPTION | DRAWN | CHECKED |
|-----|----------|--|-------|---------|
| P01 | 01/02/24 | Issued to Carter Jonas for Planning Submission | MC | SG |

| PROJECT | DESCRIPTION | DATE | SCALE AT A1 | JOB NO |
|------------------------|---------------------------------|----------|-------------|--------|
| Nash Court, ARC Oxford | PL - Proposed Ground Floor Plan | Feb 2024 | 1 : 200 | 23.036 |

| CLIENT | STATUS | SUITABILITY |
|----------------------------------|----------|-------------|
| ARC - Advanced Research Clusters | PLANNING | S3 |

| DRAWING NO | REV | DRAWN | CHECKED |
|------------------------------------|-----|-------|---------|
| NCC - SP - ZZ - 00 - DR - A - 0050 | P01 | MC | SG |

| PROJECT | ORIGINATOR | ZONE | LEVEL | TYPE | NO. | NUMBER |
|---------|------------|------|-------|------|-----|--------|
| | | | | | | |

S
 & P