

Plot 4200

ARC Oxford

TVIA Appendix B – Baseline Figures
February 2024

1389-G509

Macgregor Smith

1389-G509 – TVIA APPENDIX B – BASELINE FIGURES

Revision	Issue	Date	Author	Checked by
-	DRAFT	16.11.2023	HW	MR
A	DRAFT	29.01.2024	HW	MR
P1	For Planning	02.02.2024	HW	LP

Figure 01: Overview



KEY

 Site Boundary


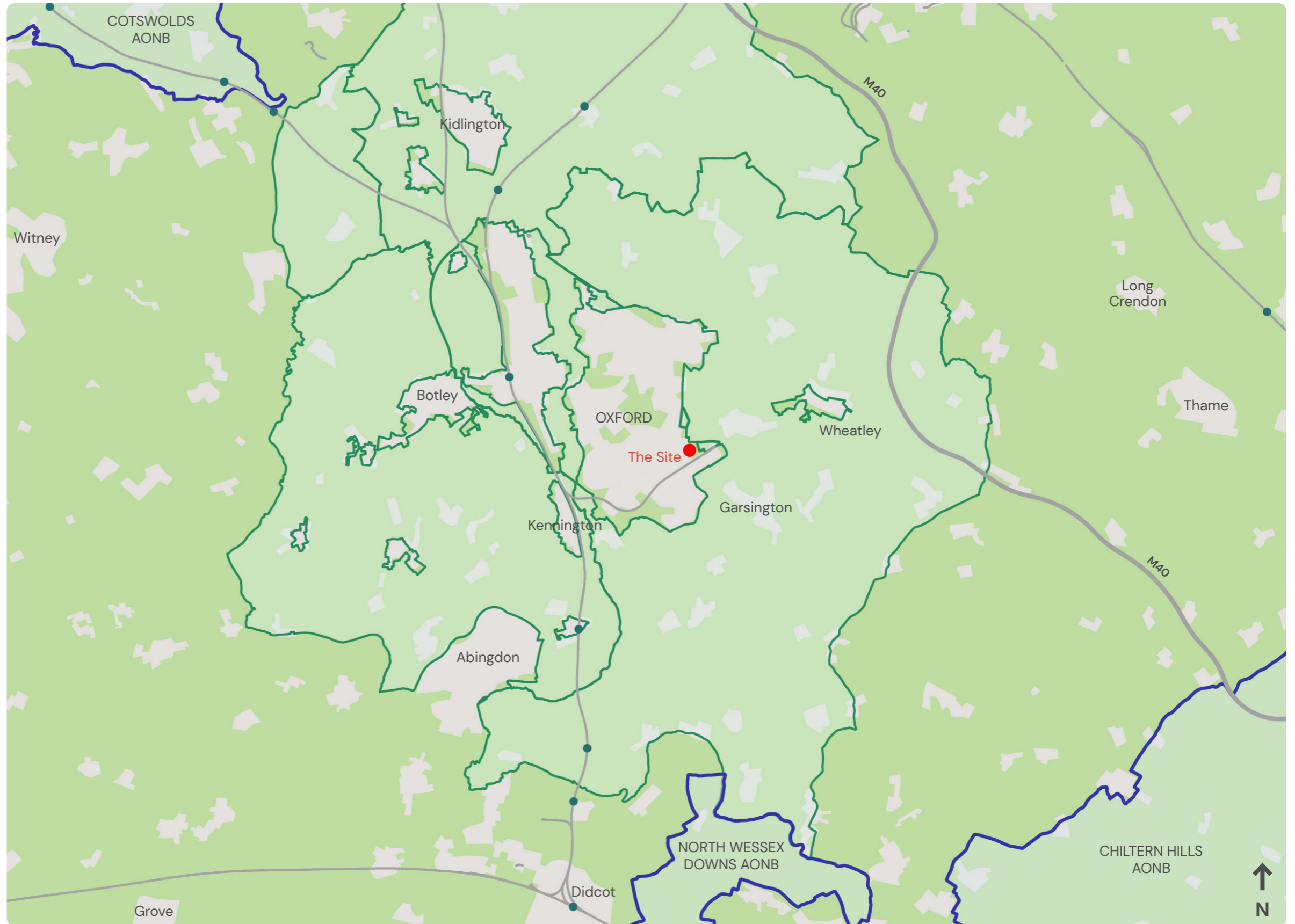
 Campus Boundary

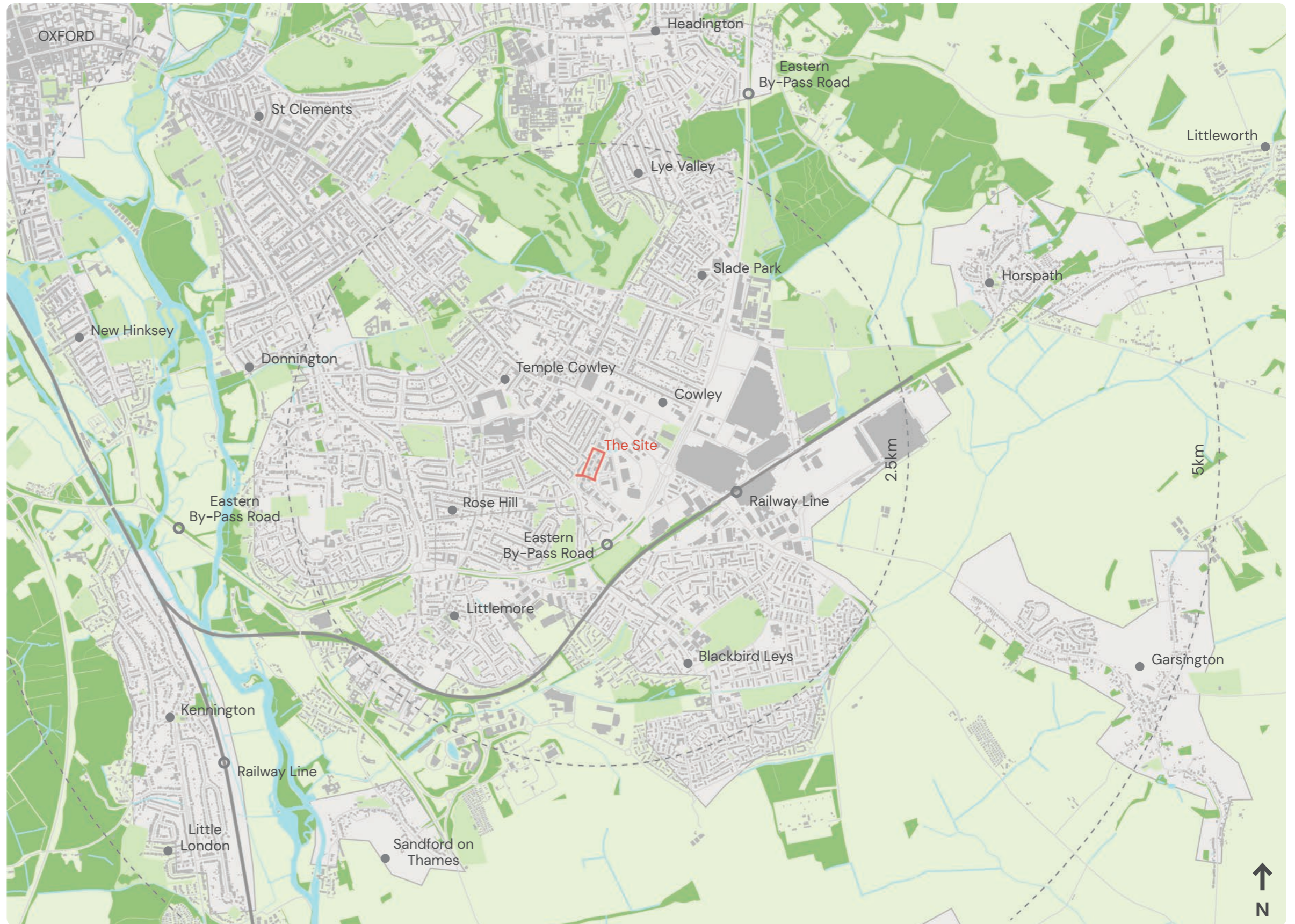
Figure 02: Wider Context



KEY

- The Site
- AONB
- Green Belt
- Main Roads
- Railway Line
- Train Stations

Figure 03: Site Location



KEY

- Site Boundary
- Local Centres
- Major Roads & Connections

Figure 04: Site Context



- KEY
- Site Boundary
 - ARC Oxford Boundary

Figure 05: National Design Guidance

NATIONAL DESIGN GUIDE (NDG, 2019)

The 'ten characteristics of well-designed places' are as follows:



- **Context** – enhances the surroundings.
- **Identity** – attractive and distinctive.
- **Built form** – a coherent pattern of development.
- **Movement** – accessible and easy to move around.
- **Nature** – enhanced and optimised.
- **Public spaces** – safe, social and inclusive.
- **Uses** – mixed and integrated.
- **Homes and buildings** – functional, healthy and sustainable.
- **Resources** – efficient and resilient.
- **Lifespan** – made to last.

Figure 06: Oxford Local Plan 2036 Policies Map

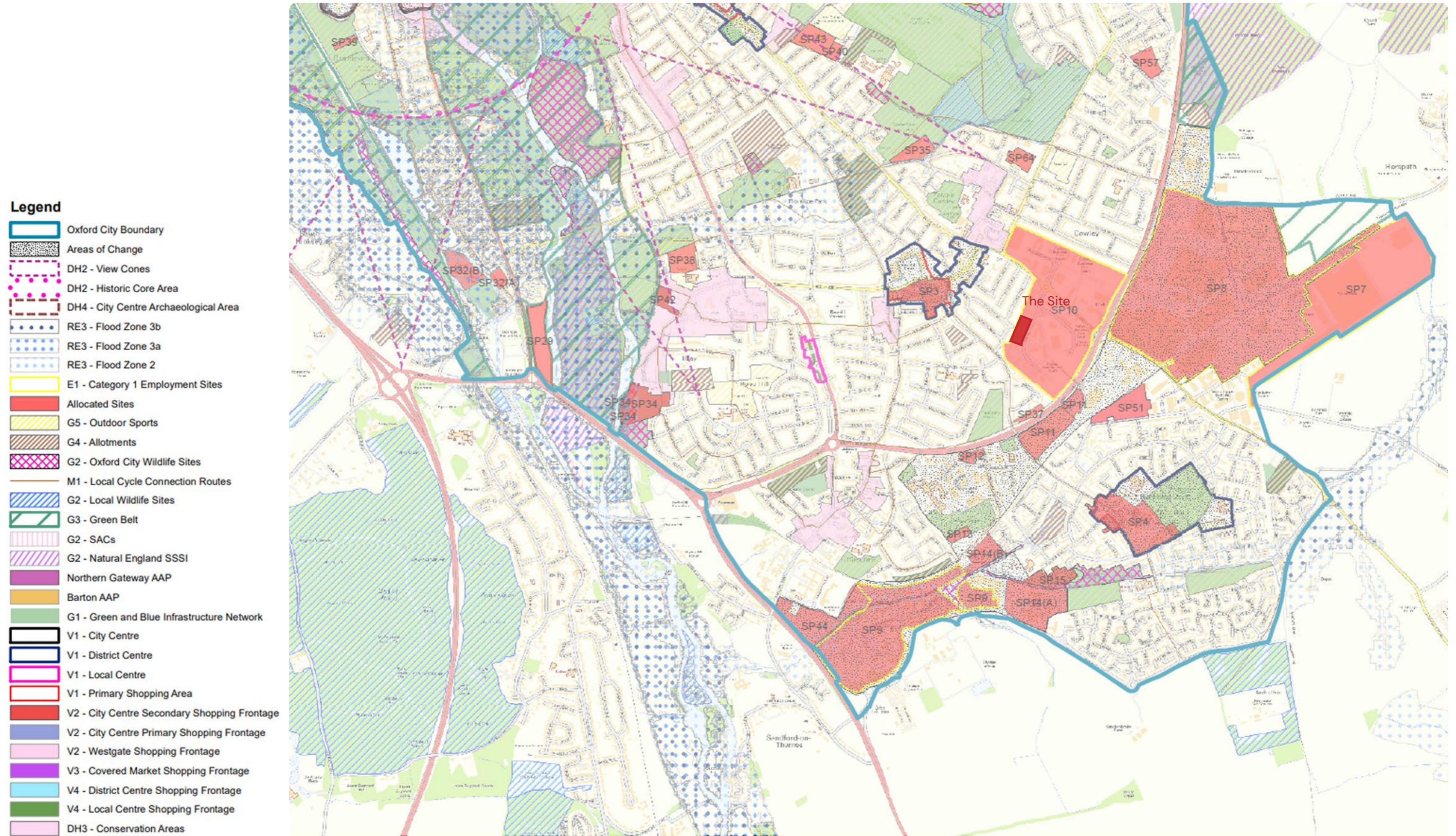


Figure 07: Oxford Preservation Trust – View Cones

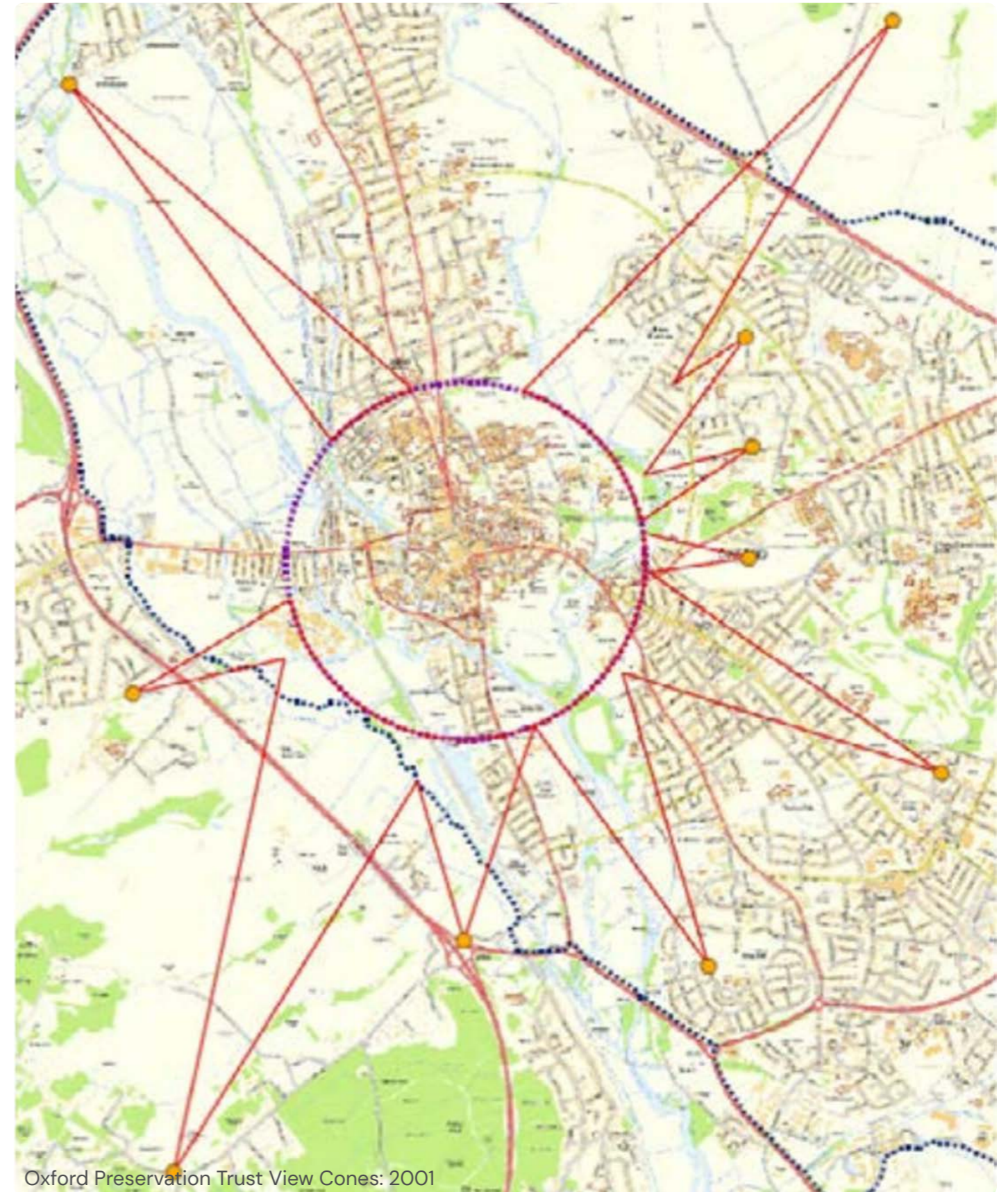
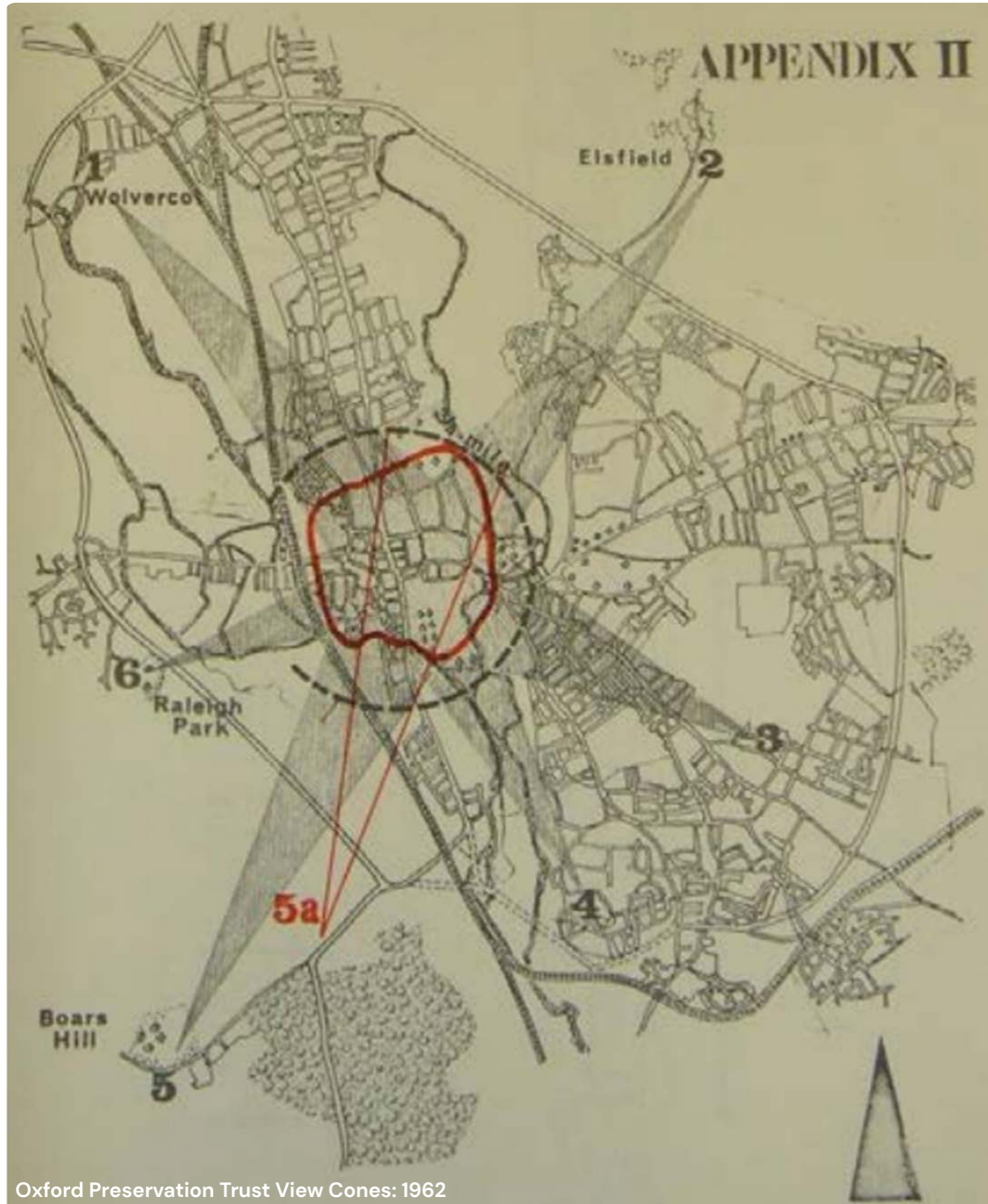
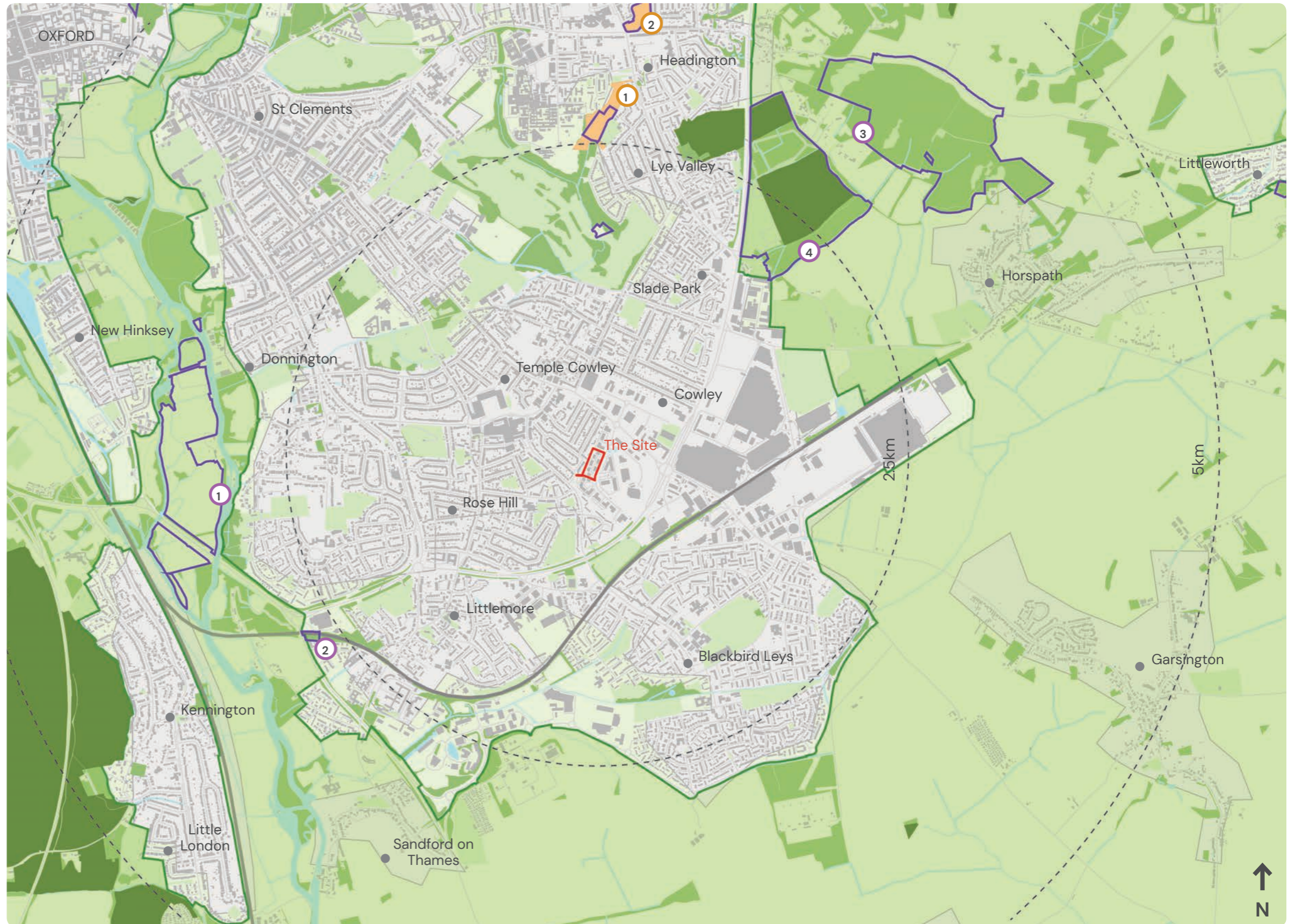


Figure 08: Landscape and Ecological Designations



KEY












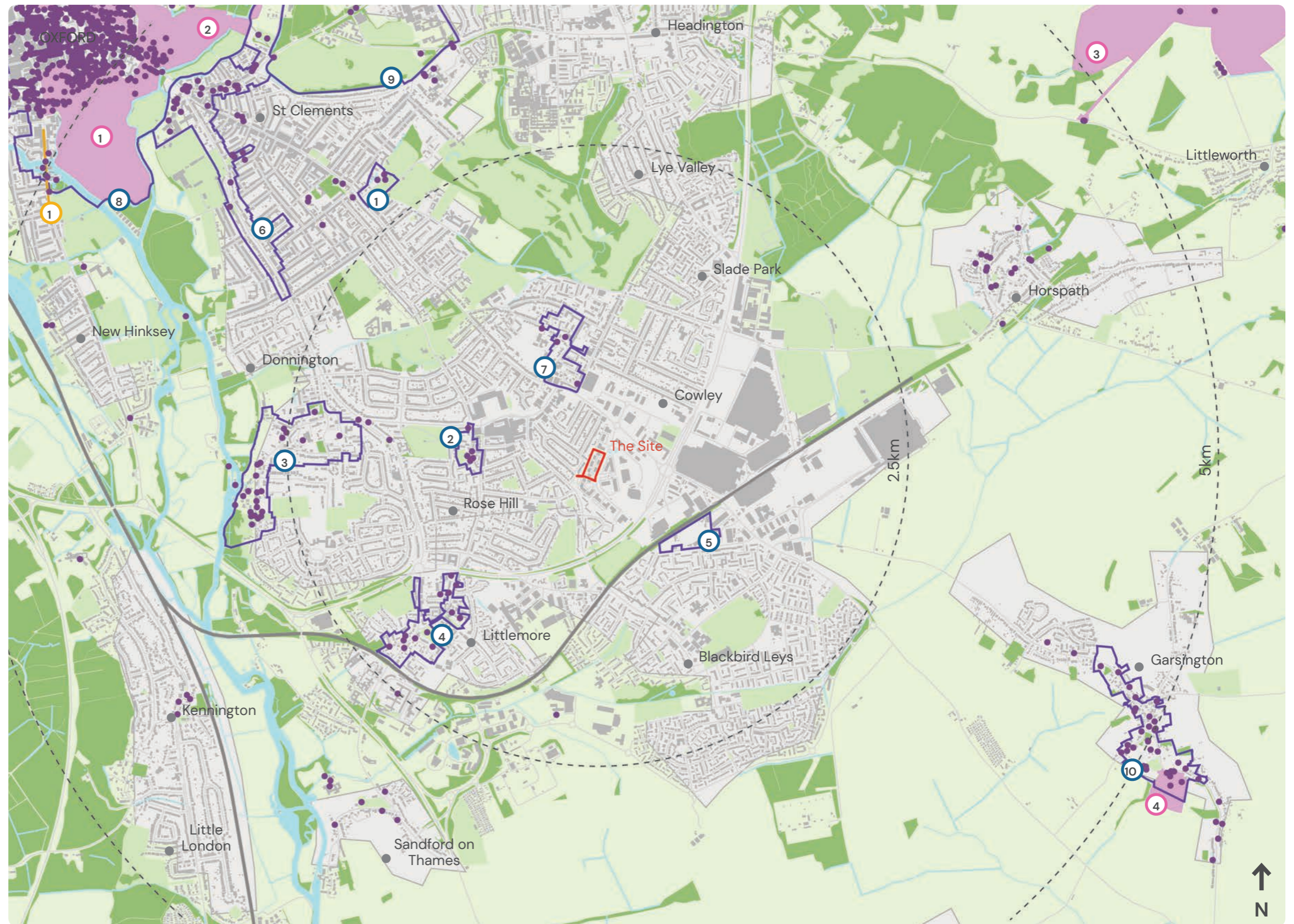
-  Site Boundary
-  Site of Special Scientific Interest
-  1 Iffley Meadows
-  2 Littlemore Railway Cutting
-  3 Shotover Country Park
-  4 Brasenose Wood
-  Local Nature Reserves
-  1 Lye Valley Fen
-  2 Rock Edge Nature Reserve
-  Ancient Woodland
-  Green Belt

Figure 09: Heritage Designations



KEY

- Site Boundary
- Conservation Areas
- 1 Bartlemas
- 2 Beauchamp Lane
- 3 Iffley
- 4 Littlemore
- 5 Oxford Stadium
- 6 St Clements
- 7 Temple Cowley
- 8 Central (City & University)
- 9 Headington Hill
- 10 Garsington
- Scheduled Monuments
- 1 Section of Grandpont Causeway
- Registered Parks and Gardens
- 1 Christ Church
- 2 Magdalen College
- 3 Shotover
- 4 Garsington Manor
- Listed Buildings

Figure 10: The Site



Figure 11: Topography

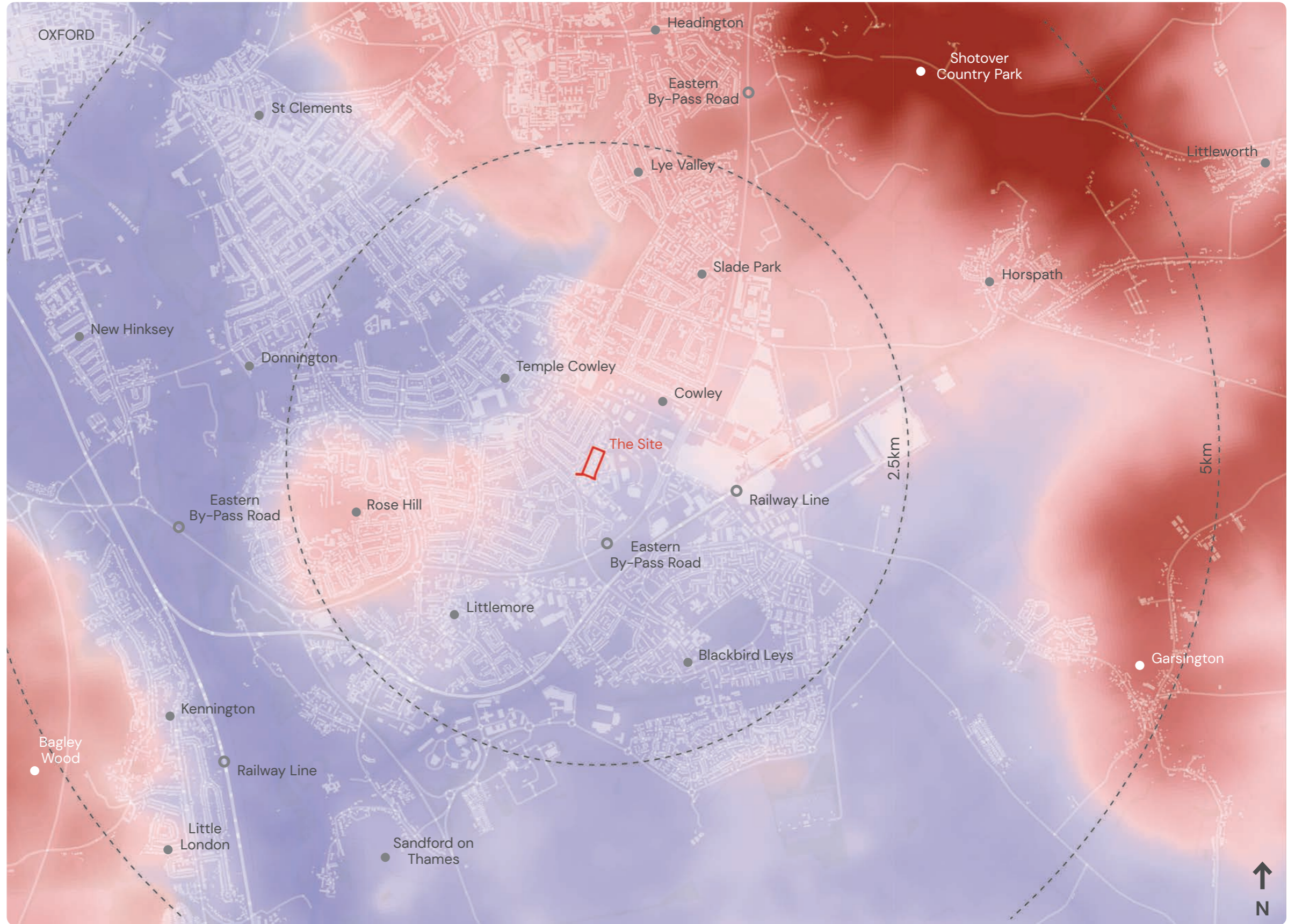
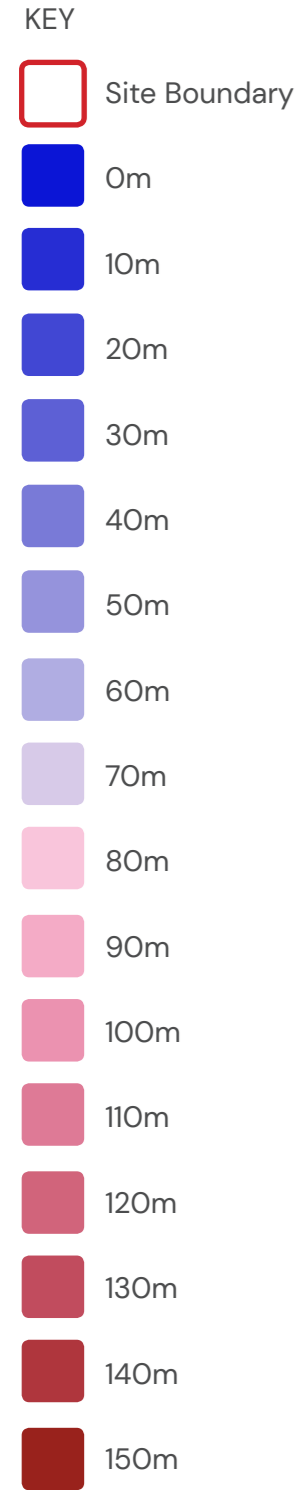
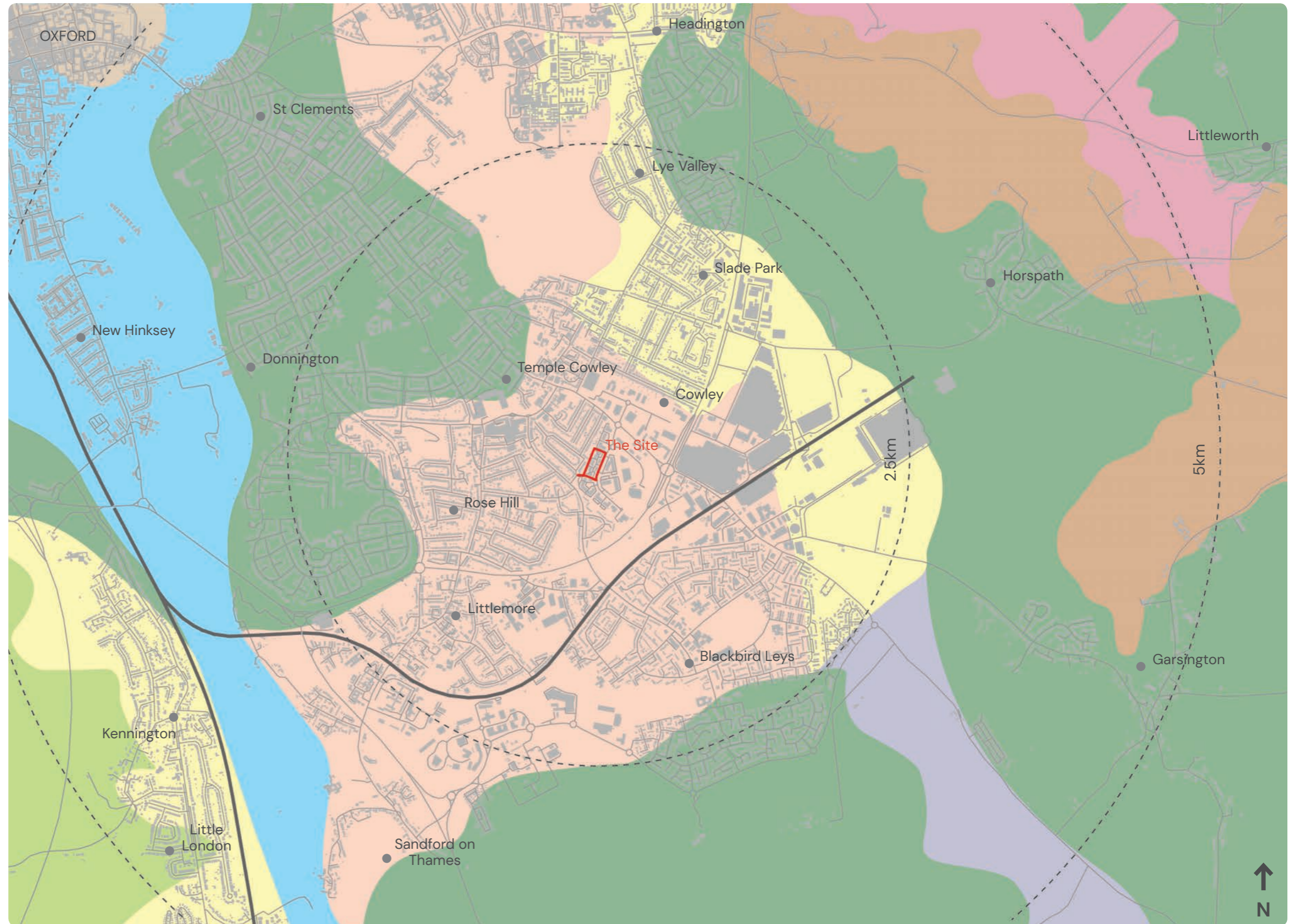


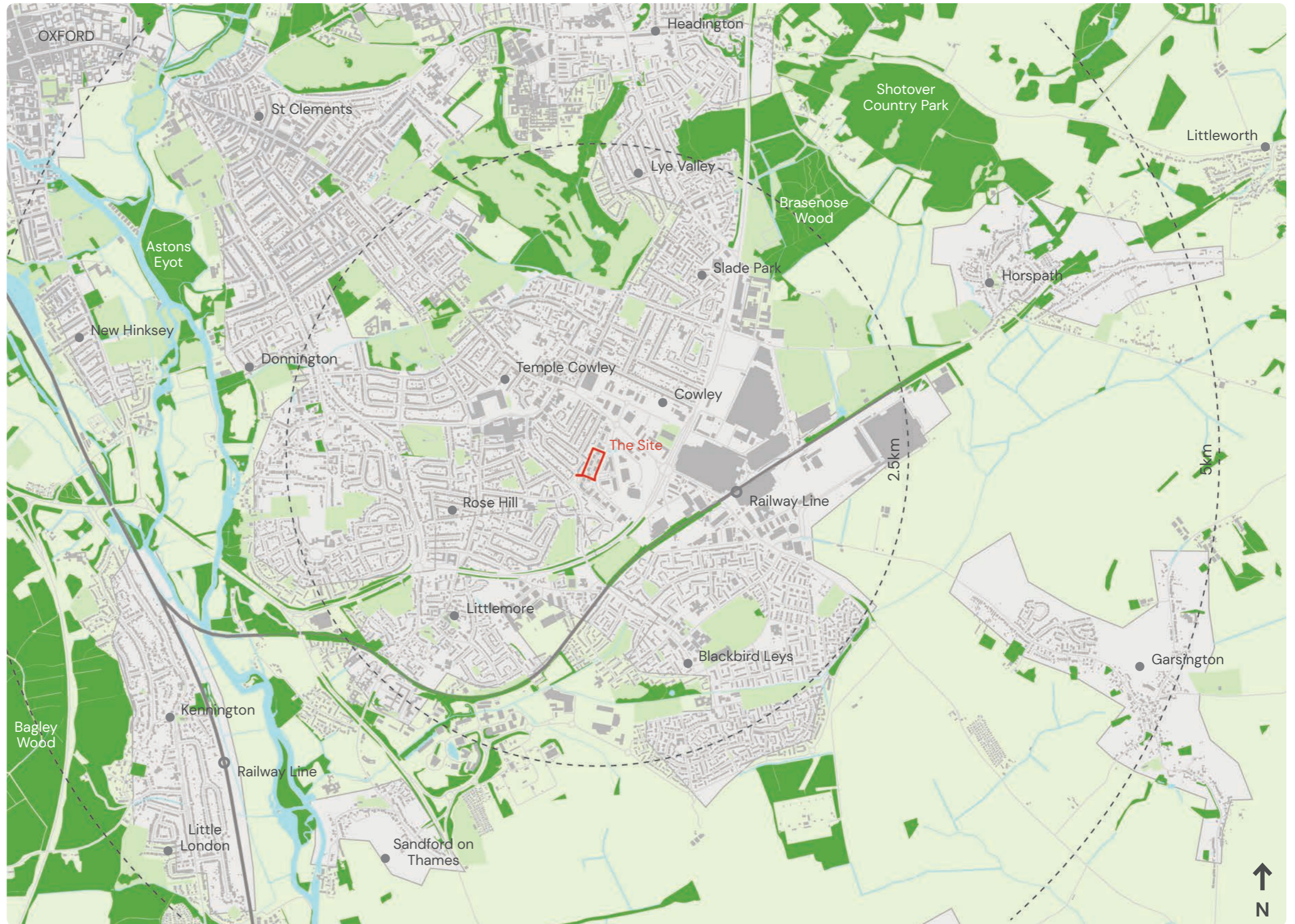
Figure 12: Geology and Soils



KEY

- Site Boundary
- Shallow lime-rich soils over chalk or limestone
- Freely draining lime-rich loamy soils
- Freely draining slightly acid but base-rich soils
- Freely draining slightly acid sandy soils
- Slowly permeable seasonally wet acid loamy and clayey soils
- Slowly permeable seasonally wet slightly acid but base-rich loamy and clayey soils
- Loamy and clayey floodplain soils with naturally high groundwater
- Loamy soils with naturally high groundwater

Figure 13: Woodland Structure



KEY
Site Boundary
Woodland Blocks

Figure 14: Existing Tree Canopy Cover – Baseline Assessment

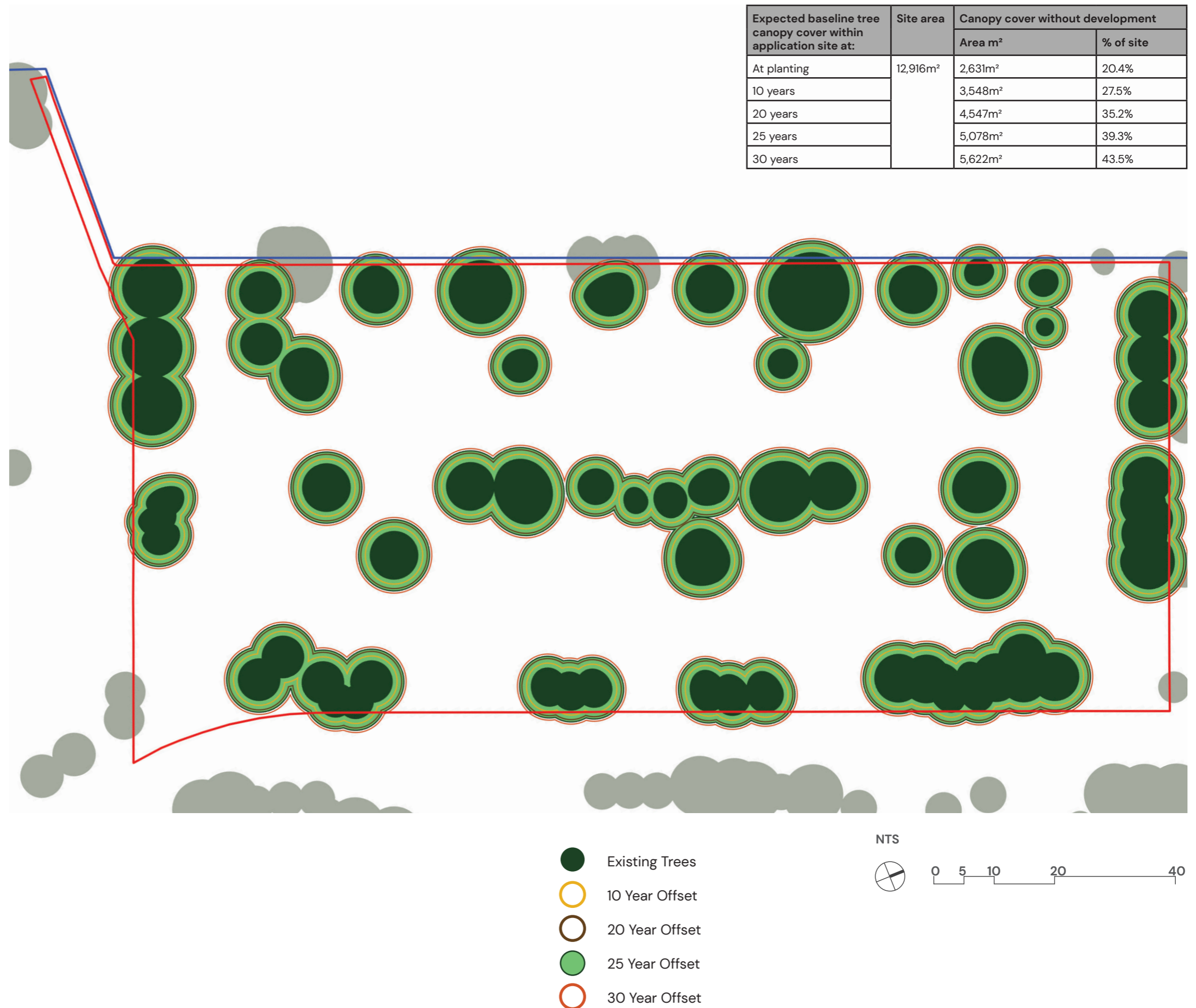


Figure 15: Existing Trees

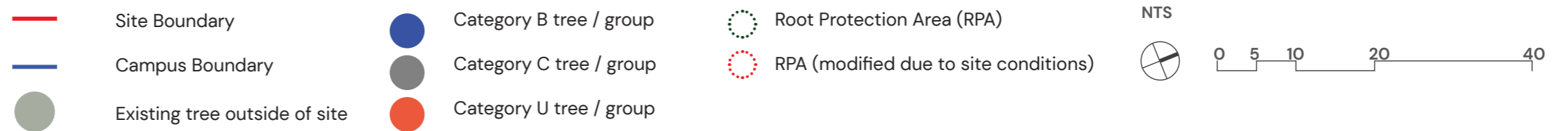
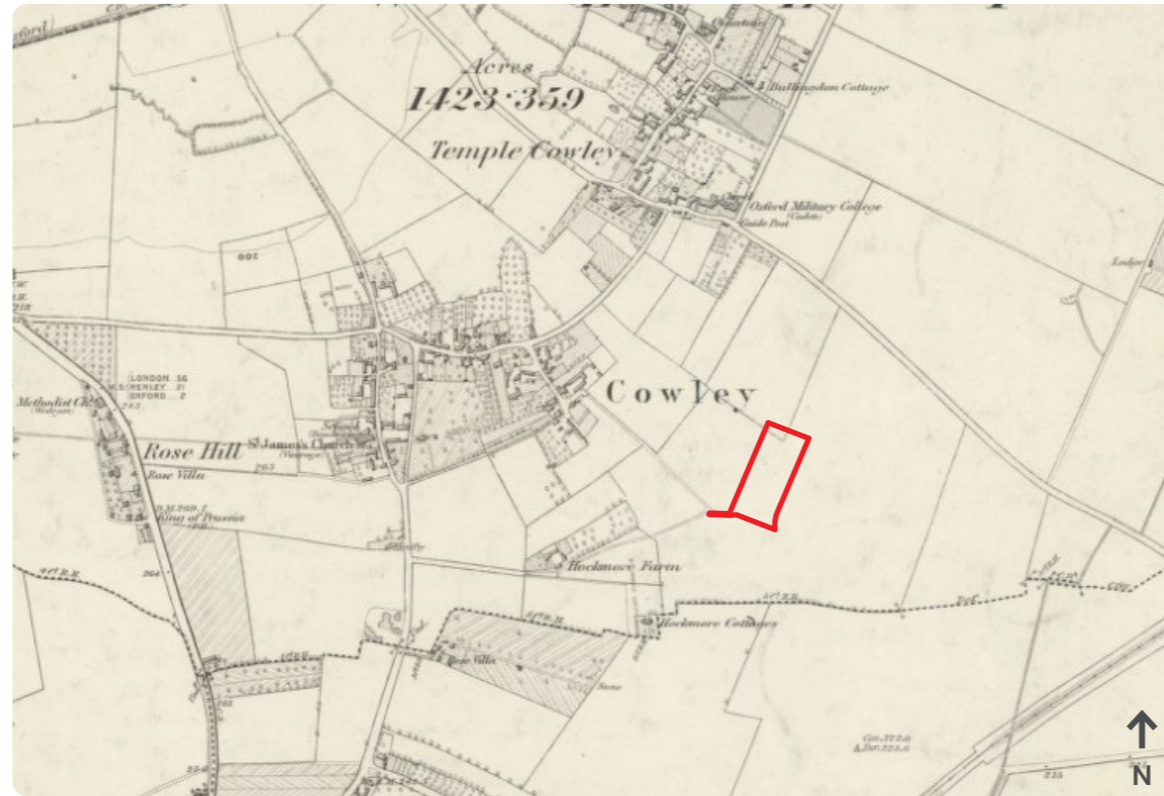


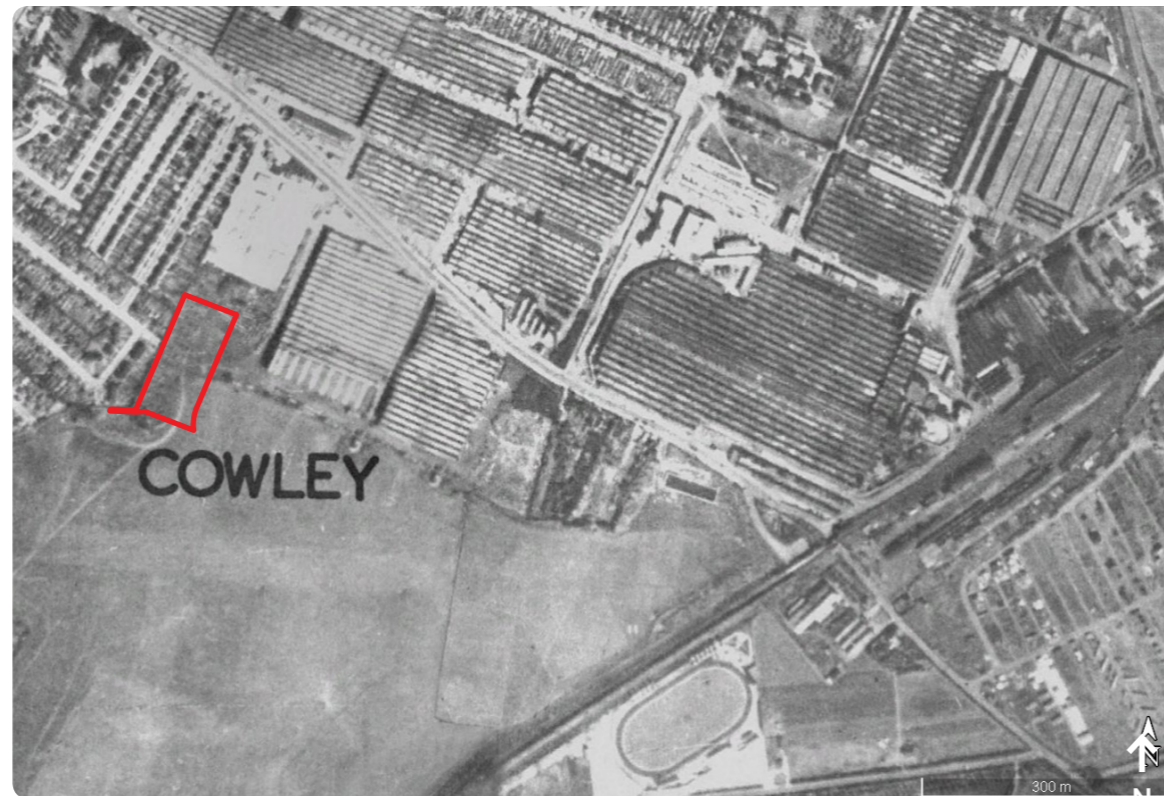
Figure 16: Historic Mapping



Cowley, 1886



Cowley, 1921

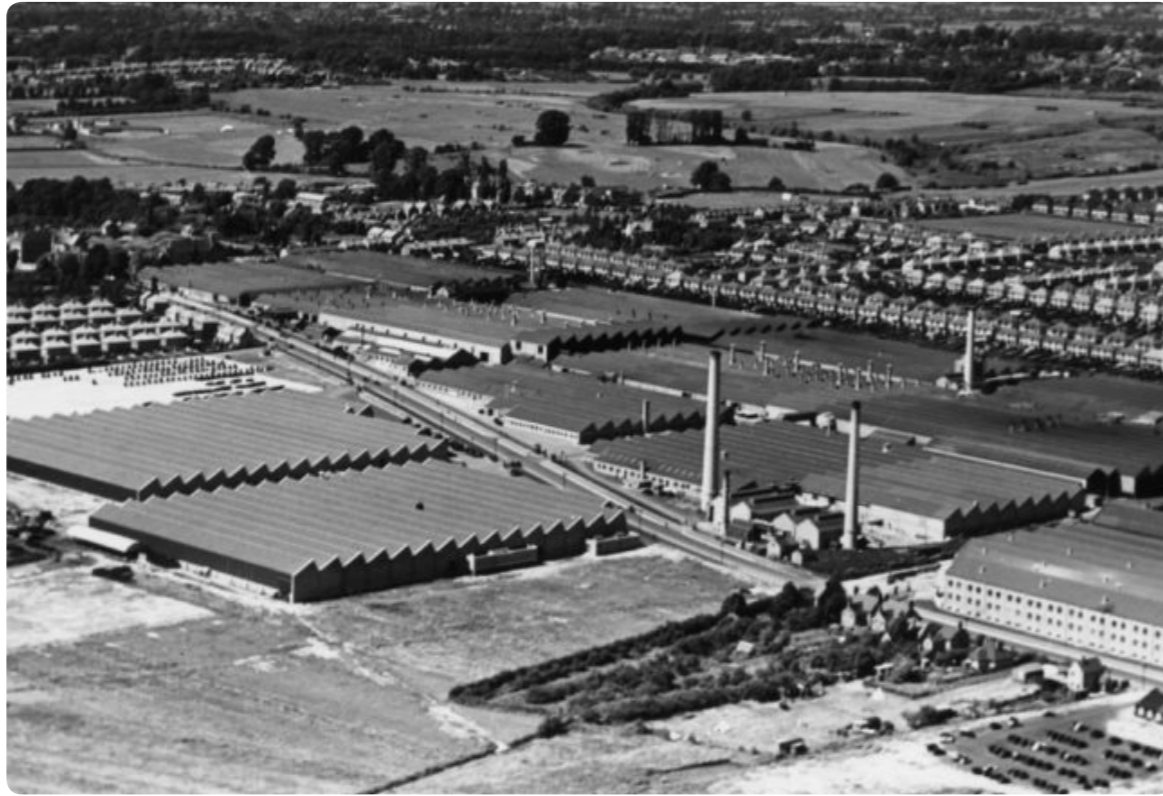


Cowley, 1945



Cowley, 1960

Figure 17: Historic Images



Morris Motor Works, 1932



Morris Motor Works, 1953



Morris Motor Works, 1970



Morris Motor Works, 1982