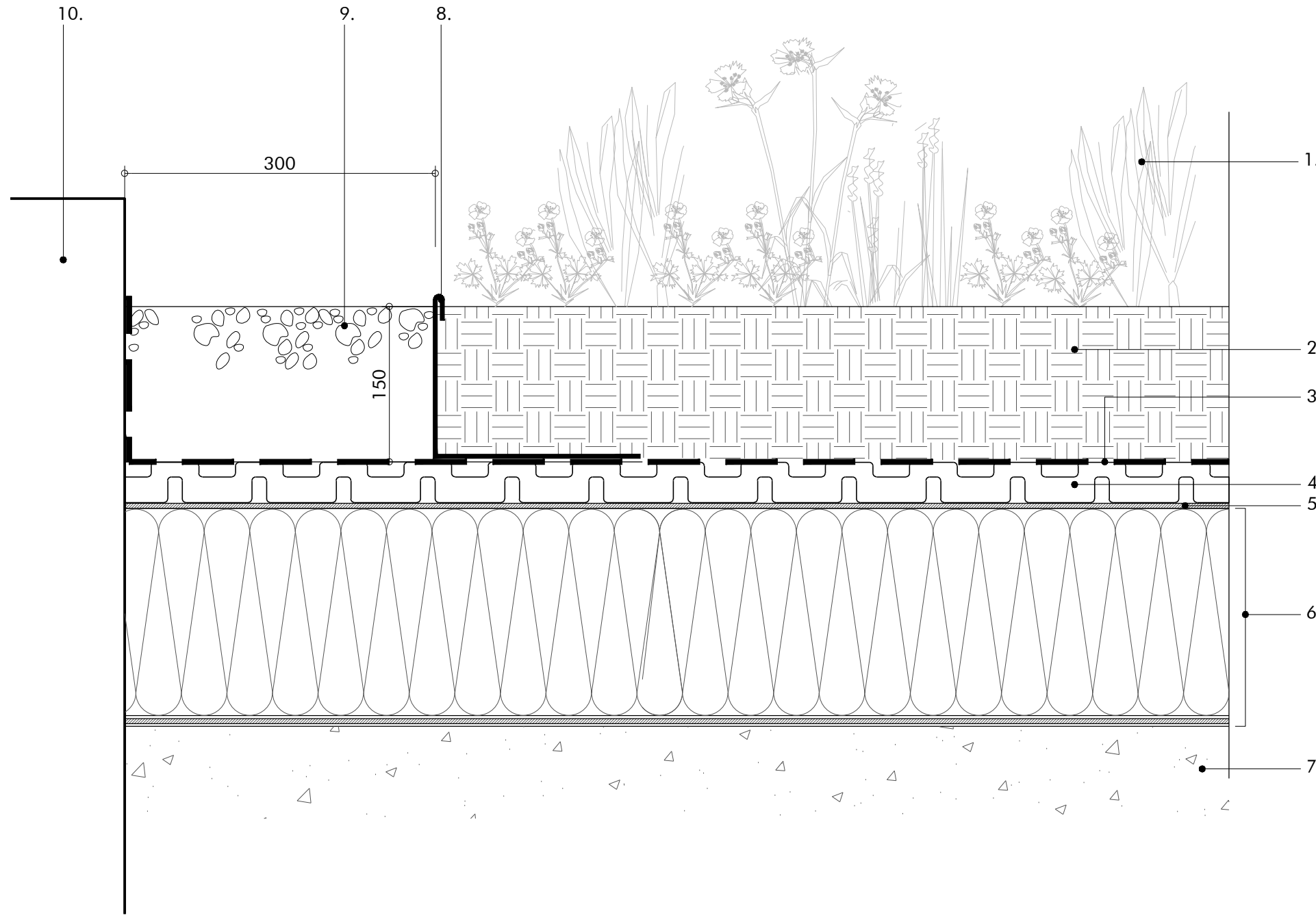


# Biodiversity Roof Detail with Insulation

1:5@A3



## KEY

1. Planting (refer to 1389-203 Planting Plan - Roof Level)
2. Biodiverse extensive growing substrate, 150mm minimum depth.
3. Filter fleece
4. Drainage reservoir layer
5. Protection mat and separation layer (by others)
6. Insulation, waterproofing and root-barrier to Architect's detail and specification
7. Roof structure to Architect's and Engineer's Detail
8. Perforated edge/drainage trims to frame and contain the green roof build up. Top edge folded/finished to ensure no sharp arrises.
9. Clean washed rounded gravel 20mm - 40mm Ø laid on filter sheet and drainage layer, to building upstand edge
10. Upstand to Architect's detail and specification
11. Integrated photovoltaic panel and railing with ballast weighted mounting system

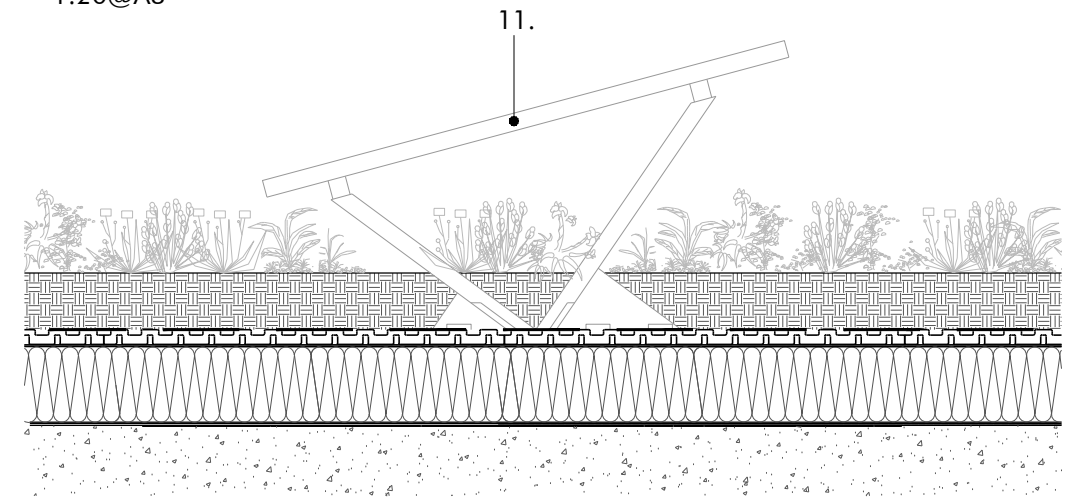
## Notes

- Drawing to be read in conjunction with the following drawings:  
1389-001 Landscape General Arrangement Plan  
1389-203 Planting Plan - Roof Level
- Access man-safe system by others.

This is a DESIGN INTENT drawing. Detailed drawings to be prepared by specialist for review by Landscape Architect and Engineer. To be read in conjunction with latest revisions of all associated drawings and specifications.

## PV Panel Mounting Detail

1:20@A3



Rev	Description	Dwn by	Chkd by	Date
P1	Draft	QZ	LP	10.11.2023
P2	Draft	QZ	LP	01.12.2023
P3	Draft	HW	LP	26.01.2024
P4	For Planning	HW	LP	02.02.2024

Notes:  
Responsibility is not accepted for errors made by others in scaling from this drawing. All construction information should be taken from figured dimensions only.

## Macgregor Smith

www.macgregorsmith.co.uk  
01225 464 690  
hello@macgregorsmith.co.uk

Project	Plot 4200 ARC Oxford	Drawn by	QZ
Status	Planning	Checked by	LP
Title	Typical Detail - Biodiversity Roof	Scale	varies@A3
Drawing	1389-404	Revision	<b>P4</b>

This drawing is protected by copyright. Contractors must check all dimensions on site. Only figure dimensions are to be worked from. Discrepancies must be reported to landscape architect before proceeding.