

**GENERAL NOTES**

All architectural drawings should be read in conjunction with reports by other consultants submitted along with the application.

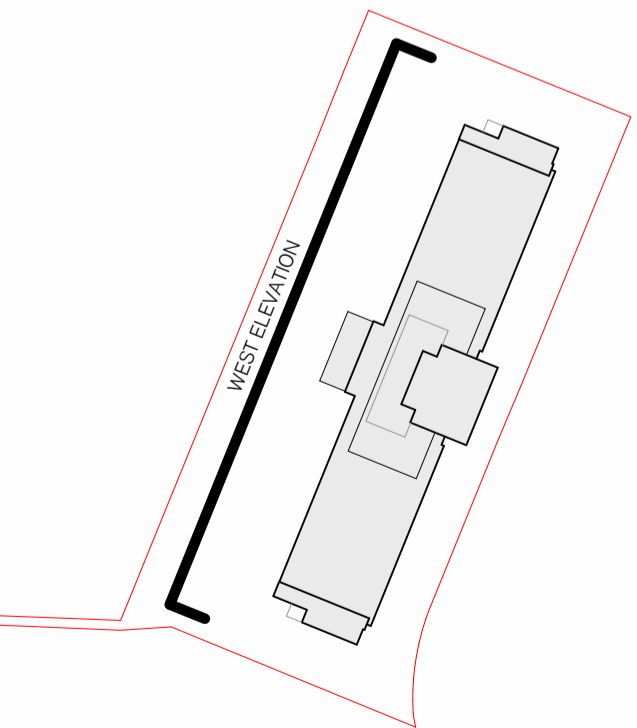
All proposed internal layouts are indicative and approximate.

Any dimensions or datum levels are subject to further detail design development.

- Key**
- 1. Rear Entrance
  - 2. Side Core
  - 3. Roof Plant Enclosure
  - 4. Flue Extract (by Future Tenant)
  - 5. Lift Overrun
  - 6. Access Road
  - 7. Fire Escape Stair Location
  - 8. Loading Bay
  - 9. Lab Gas / Bin Store



**2 Proposed West Elevation**  
1 : 200



SPRATLEY & PARTNERS  
7 CENTENARY BUSINESS PARK, STATION ROAD, HENLEY-ON-THAMES, OXFORDSHIRE RG9 1DS. 01491 411277  
ISSUED ONLY FOR THE PURPOSE INDICATED. THIS DRAWING TO BE READ IN CONJUNCTION WITH ALL CONSULTANTS INFORMATION. ALL DIMENSIONS TO BE CHECKED ON SITE. DO NOT SCALE. THIS DRAWING IS COPYRIGHT.

| REV. | ISSUED   | DESCRIPTION                                    | DRAWN | CHECKED |
|------|----------|--|-------|---------|
| P01  | 01/02/24 | Issued to Carter Jonas for Planning Submission | MC    | SG      |

| PROJECT                | DESCRIPTION                       | DATE     | SCALE AT A1 | JOB NO |
|------------------------|-----------------------------------|----------|-------------|--------|
| Nash Court, ARC Oxford | PL - Proposed GA Elevation - West | Feb 2024 | 1 : 200     | 23.036 |

| CLIENT                           | STATUS   | SUITABILITY |
|----------------------------------|----------|-------------|
| ARC - Advanced Research Clusters | PLANNING | S3          |

| DRAWING NO                         | REV | DRAWN | CHECKED |
|------------------------------------|-----|-------|---------|
| NCO - SP - ZZ - ZZ - DR - A - 0061 | P01 | MC    | SG      |

| PROJECT | ORGANISATOR | ZONE | LEVEL | TYPE | SCALE | NUMBER |
|---------|-------------|------|-------|------|-------|--------|
|         |             |      |       |      |       |        |

S  
& P