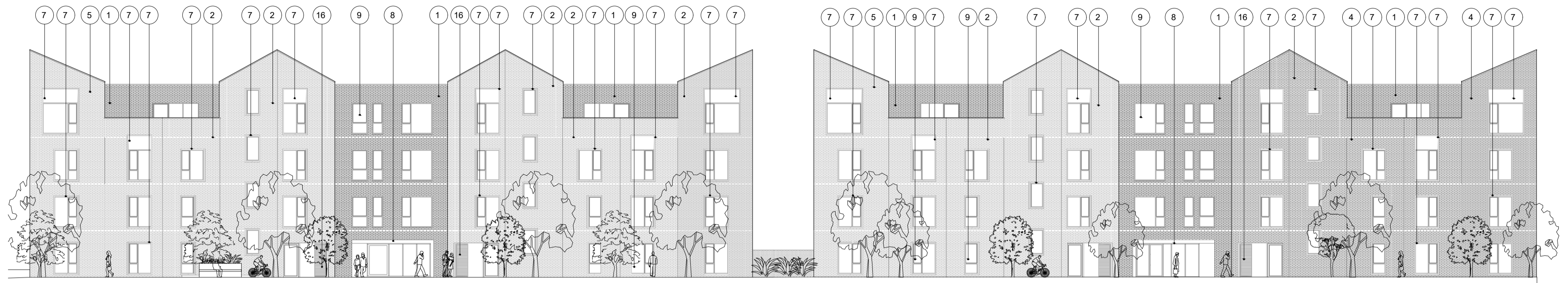


Contractors are to check all levels and dimensions before work is put in hand, and any discrepancies are to be referred to the architects

| REV | DATE | DESCRIPTION | DWN | CHKD |
|-----|----------|-------------------------------------|-----|------|
| P01 | 24.11.23 | Preliminary Issue. | AP | - |
| P02 | 09.01.24 | Preliminary Issue. | SG | - |
| P03 | 06.02.24 | General updates for planning issue. | AP | - |



North Elevation



South Elevation

MATERIALS KEY:

- Brick Type 1: Brindle red / buff blend
- Brick Type 2: Light coloured / white
- Brick Type 3: Variegated grey
- Brick Type 4: Brindle / white patterned
- Brick Type 5: White / brindle patterned
- Balustrade: Black metal
- Window Surround: Stone-effect metal
- Entrance Surround: Precast concrete
- Glazing: Black-framed
- Cladding: Black metal
- Rainwater Goods: Black metal
- Garage Door: Black metal
- Door: Stained timber
- Lintel and Column: Black metal
- Privacy Screen: Perforated metal
- Louvered Panel: Black metal
- Car Park Gate: Black metal
- Coping: Colour matched aluminium
- Roof Tiles: Smooth Grey
- Roof Tiles: Smooth Red

Planning



Architects + Interior Designers Limited
 123 NEW LONDON ROAD, CHELMSFORD,
 ESSEX. CM2 0QT
 TEL: +44 (0) 1245 269755 FAX: +44 (0) 1245 250310
 E-MAIL: admin@lap-architects.co.uk

www.lap-architects.com

project

Canalside
 Oxford North

client

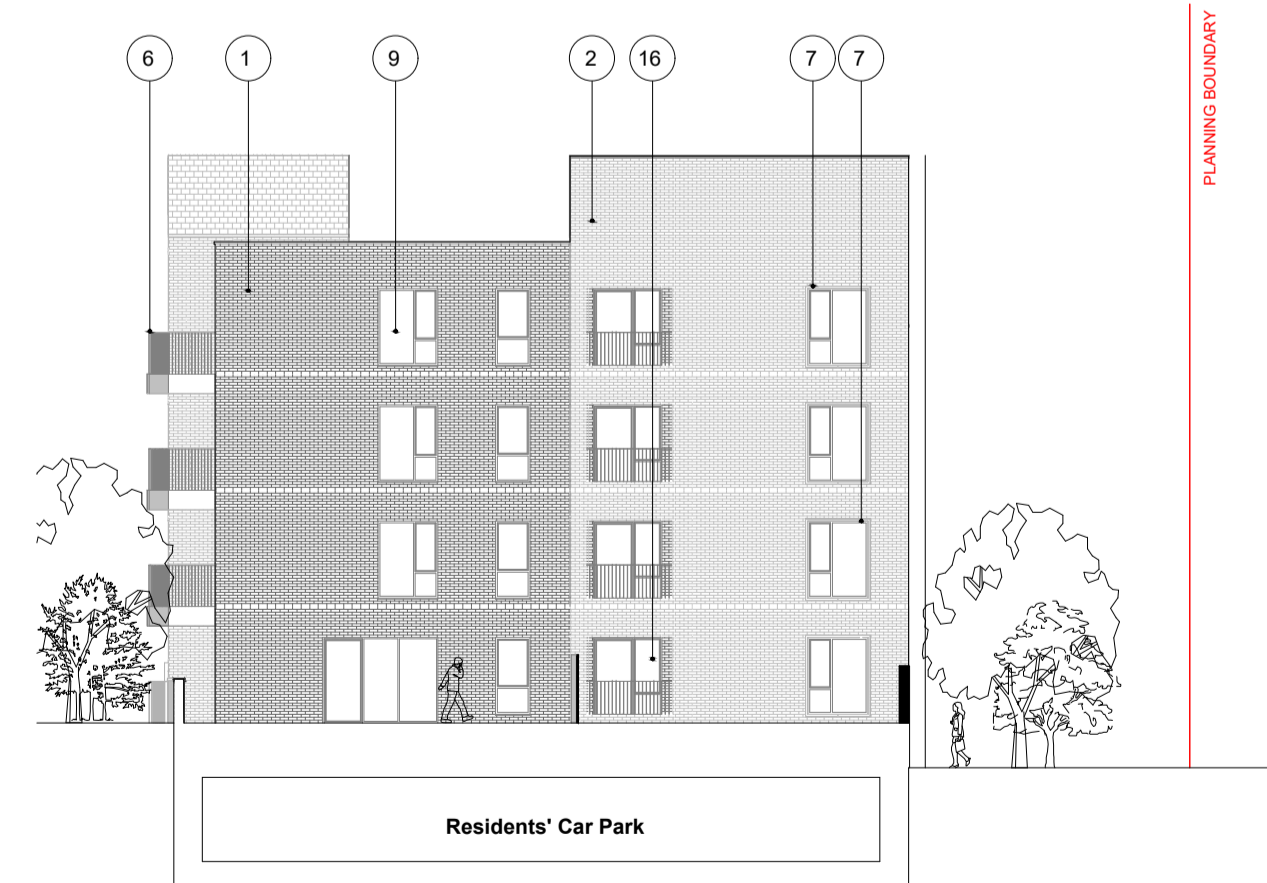
Hill Residential

drawing title

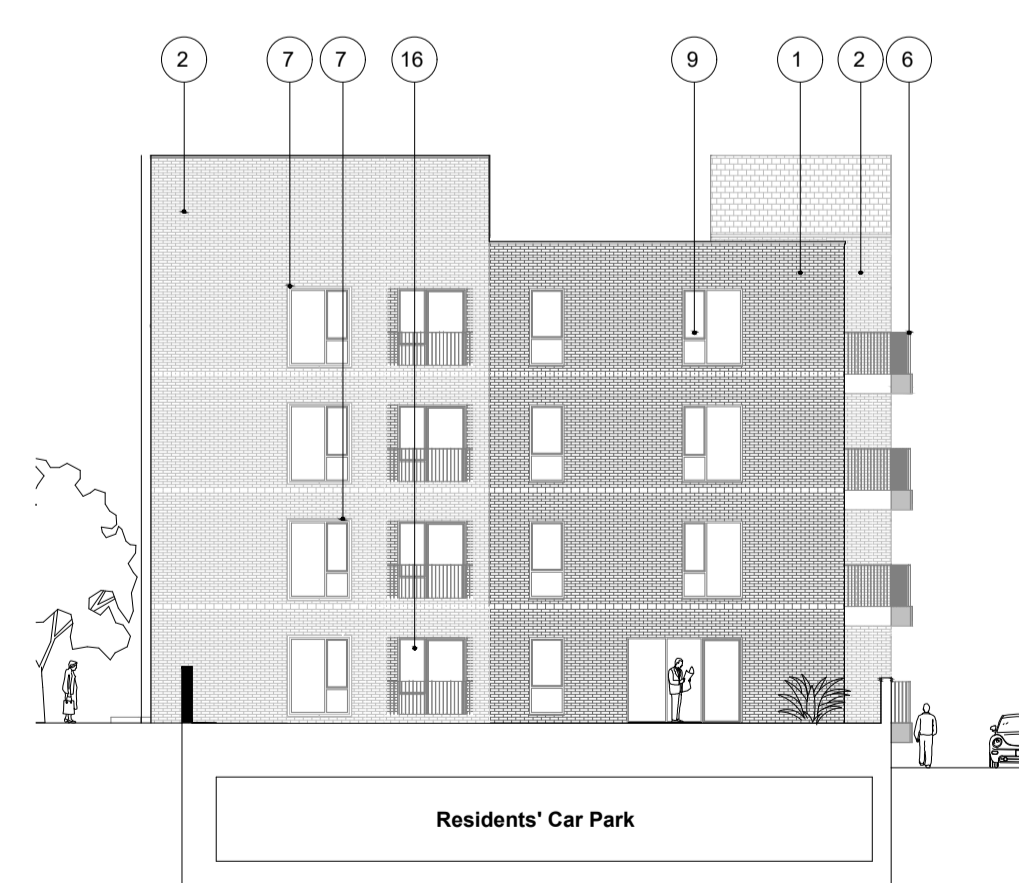
Blocks 6 & 7
 Proposed Elevations



Block 6 West Elevation



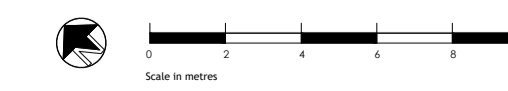
Block 6 East Elevation



Block 7 West Elevation



Block 7 East Elevation



| | |
|---------------------------------|---------------|
| drawing number | revision |
| W075-LAP-67XXX- ZZ-D-A-10101 | P01 P02 P03 |
| checked PST | drawn GS |
| scale 1:200 @ A1 | date Sep 2023 |

This drawing is the property of LAP Architects + Interior Designers Ltd. and must not be copied or reproduced in any way in whole or in part without the express permission of LAP Architects + Interior Designers Ltd. Copyright © LAP Architects + Interior Designers Ltd.