

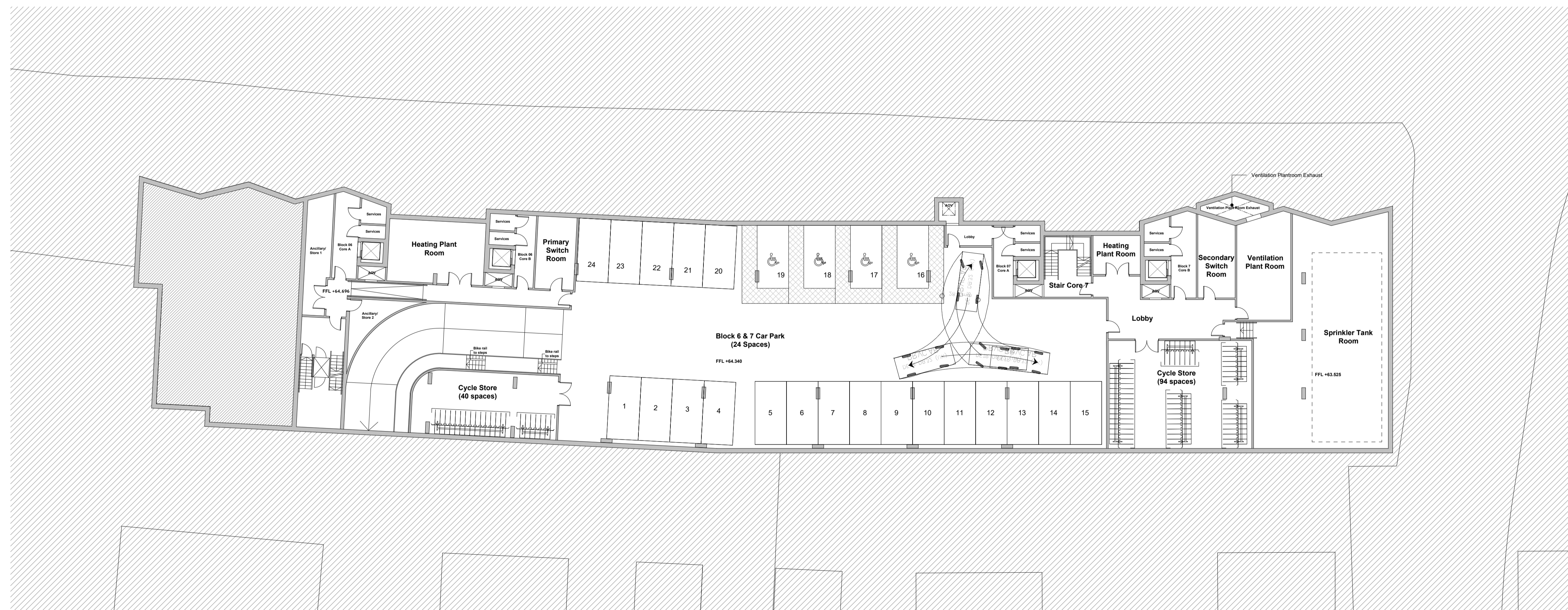
Contractors are to check all levels and dimensions before work is put in hand, and any discrepancies are to be referred to the architects

REV	DATE	DESCRIPTION	DWN	CHKD
P01	24.11.23	Preliminary Issue.	AP	-
P02	09.01.24	Preliminary Issue.	SG	-
P03	19.01.24	Preliminary Issue.	SG	-
P04	05.02.24	Secondary switch room moved next to ventilation plant room. Ventilation plant room moved to the right.	AP	-
P05	06.02.24	General updates for planning issue.	AP	-



Ground Floor Plan

- MATERIALS KEY:**
1. Brick Type 1: Brindle red / buff blend
 2. Brick Type 2: Light coloured / white
 3. Brick Type 3: Variegated grey
 4. Brick Type 4: Brindle / white patterned
 5. Brick Type 5: White / brindle patterned
 6. Balustrade: Black metal
 7. Window Surround: Stone-effect metal
 8. Entrance Surround: Precast concrete
 9. Glazing: Black-framed
 10. Cladding: Black metal
 11. Rainwater Goods: Black metal
 12. Garage Door: Black metal
 13. Door: Stained timber
 14. Lintel and Column: Black metal
 15. Privacy Screen: Perforated metal
 16. Louver Panel: Black metal
 17. Car Park Gate: Black metal
 18. Coping: Colour matched aluminium
 19. Roof Tiles: Smooth Grey
 20. Roof Tiles: Smooth Red



Basement Floor Plan

Planning



Architects + Interior Designers Limited
 123 NEW LONDON ROAD, CHELMSFORD,
 ESSEX. CM2 0QT
 TEL: +44 (0) 1245 269755 FAX: +44 (0) 1245 250310
 E-MAIL: admin@lap-architects.co.uk

www.lap-architects.com

project

Canalside
 Oxford North

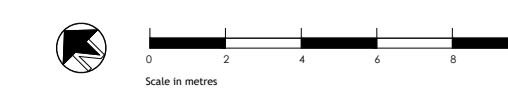
client

Hill Residential

drawing title

Blocks 6 & 7
 Basement & Ground Floor
 Levels

drawing number	revision
W075-LAP-67XXX- ZZ-D-A-10100	P01 P02 P03 P04 P05
scale 1:200 @ A1	checked PST
drawn GS	date Sep 2023



This drawing is the property of LAP Architects + Interior Designers Ltd. and must not be copied or reproduced in any way in whole or in part without the express permission of LAP Architects + Interior Designers Ltd. Copyright © LAP Architects + Interior Designers Ltd.