

**APPENDIX D**  
**PHOTOGRAPHS**



Top The Site 24/09/21 Prima Windows viewed south east, bottom viewed east





Top Northbourne Engineering viewed south, bottom the Site viewed NW 24/09/21







Top rear of Prima Windows, bottom rear Northbourne Engineering 24/09/21







Top overground tanks by Northbourne Engineering, bottom tank by Prima Windows







Top: track north of Prima Windows viewed north west 24/09/21. Bottom Site 10.08.23







Site 10/08/23 top viewed west, bottom viewed NW







Site 10/08/23 top TP1 works, bottom core at WS1







TP1`





TP2





TP3





BH1





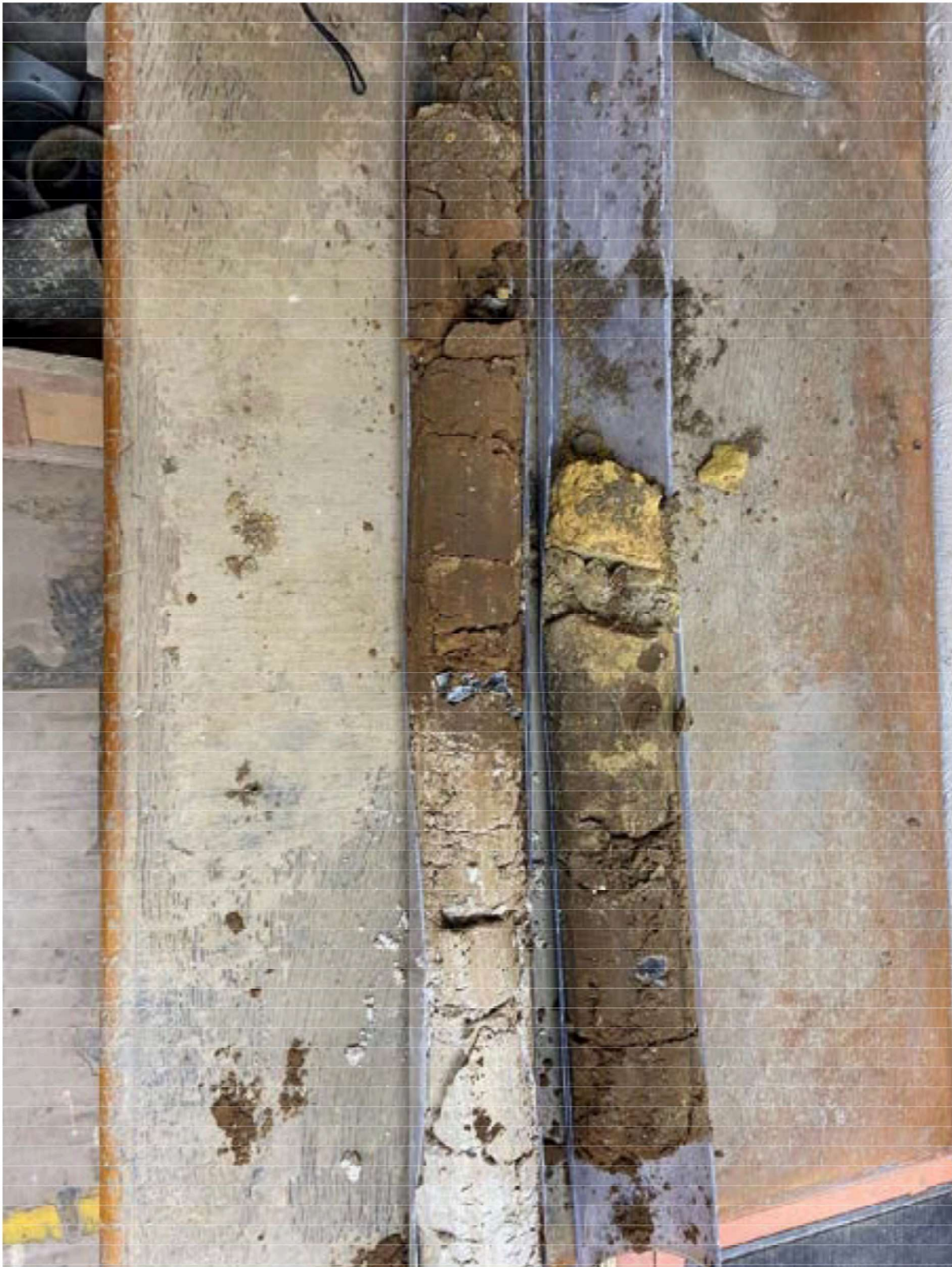
BH2





**BH3**





WS2





WS3





WS4



WS5





WS7





WS8





WS10





WS11





WS12





WS13





WS14

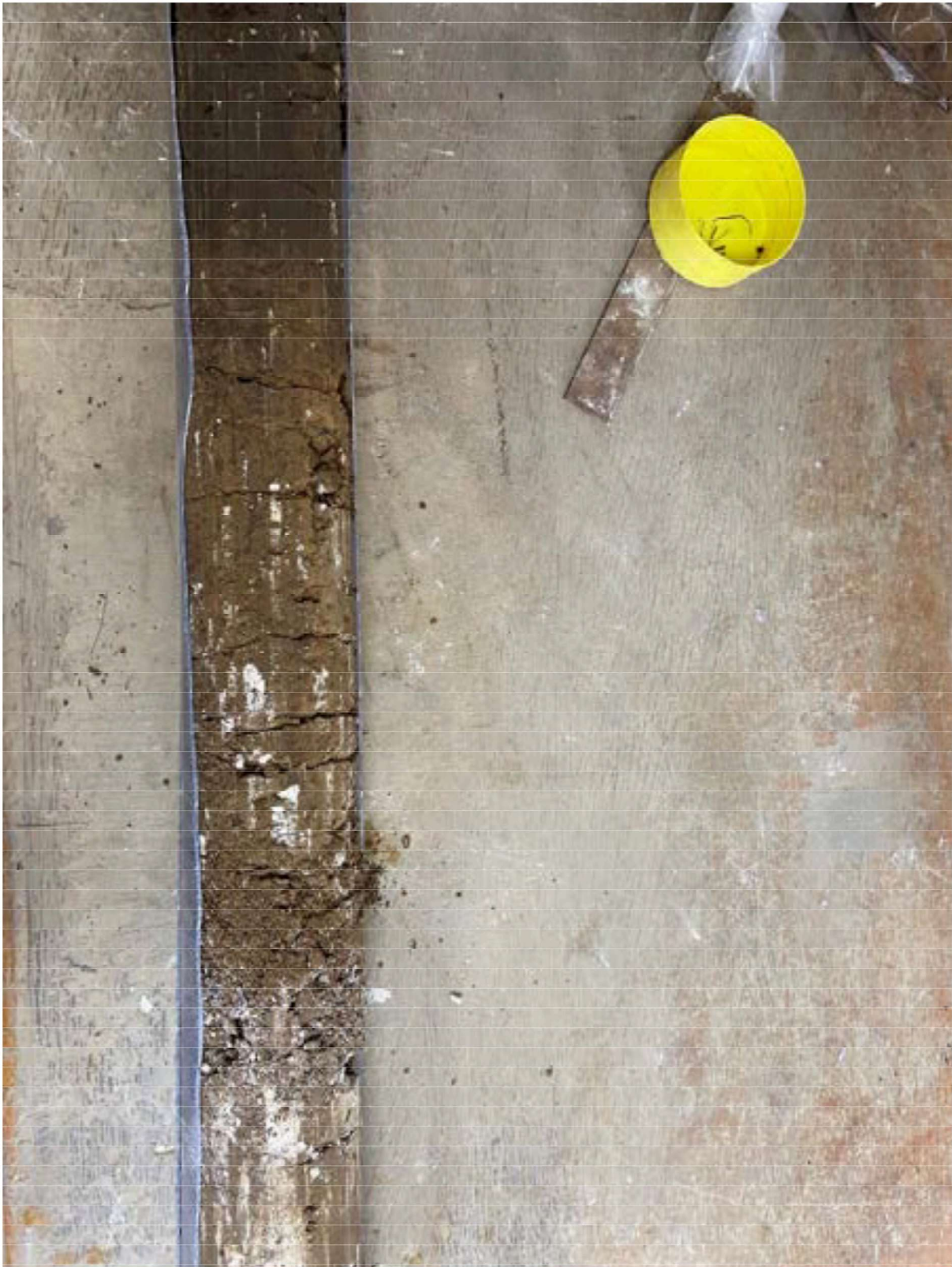


WS15





WS16



WS17





**WS18**



WS19





**WS20**



WS21





**WS22**



WS23



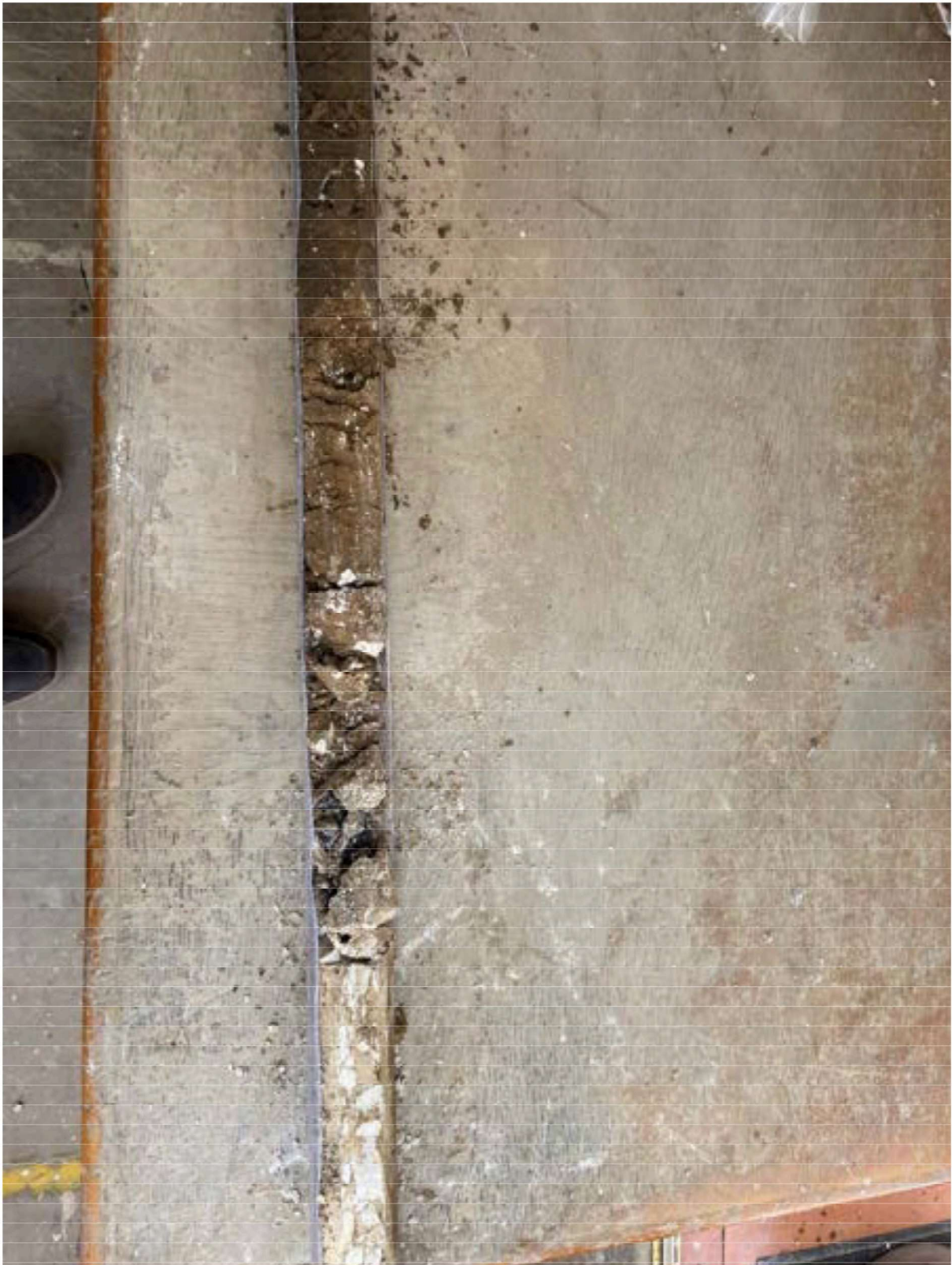


WS24



WS25





**WS26**