

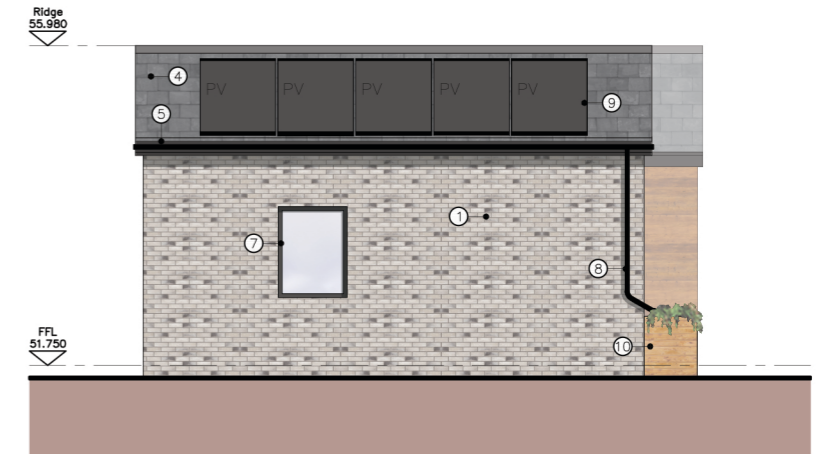
26 Copthorne Avenue, Bromley, BR2 8NN

Design copyright is vested in the Company below from whom consent must be obtained for copying or reproducing this drawing.

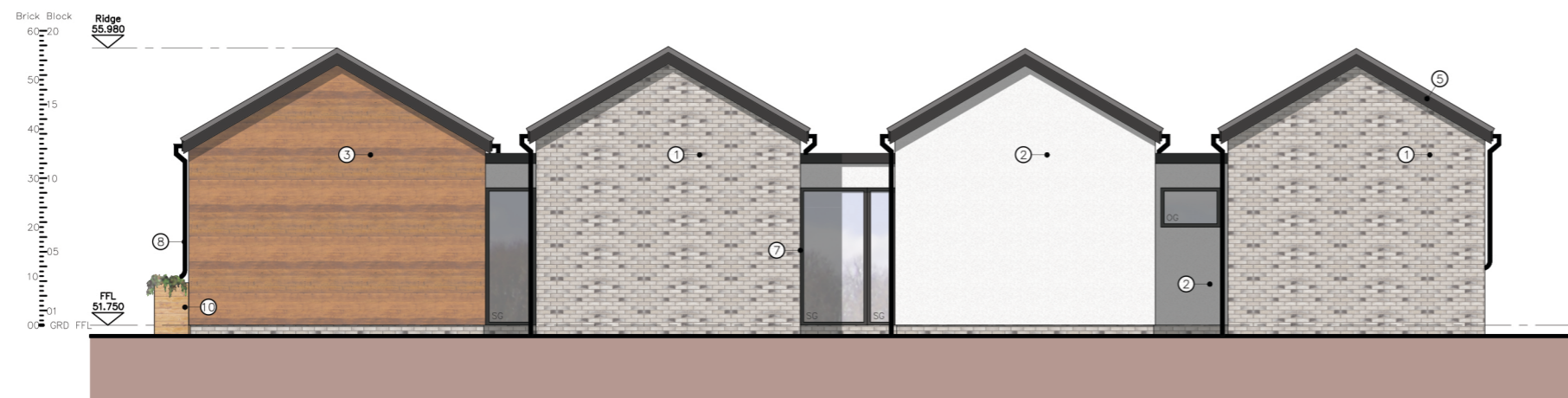
Planning



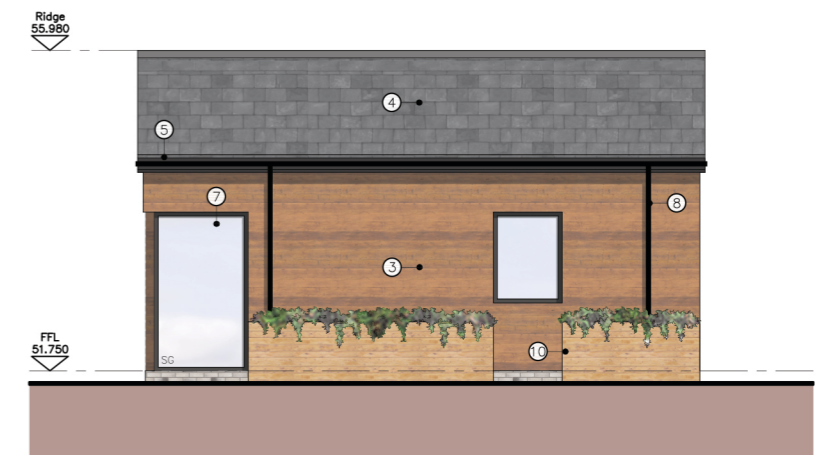
Front Elevation



Left Side Elevation



Rear Elevation



Right Side Elevation



MATERIALS LEGEND:

- ① Facing Brickwork - Vandersanden
Colour: Bivio (or similar)
- ② Render
Colour: White
- ③ Weatherboarding
Colour: Western Red Cedar
- ④ Castile Spanish Roof Tiles
- ⑤ Fascia/Eaves/Bargeboard
Colour: Black uPVC
- ⑥ Composite Front Door
Colour: Anthracite Grey
- ⑦ uPVC Windows and Secondary Doors
Colour: Anthracite Grey
- ⑧ uPVC Rainwater Pipes
Colour: Black
- ⑨ Integrated PV Panels
Colour: Black
- ⑩ Rain Garden Planter

Proposed Elevations



13 Arm & Sword Lane
Old Hatfield - Herts - AL9 5EH
www.AshbyDesign.co.uk
01707 270 077

Project
26 Copthorne Avenue,
Bromley, BR2 8NN
Title
Proposed Elevations
Scale
1:100 @ A1

Date
October '23

Drawn
CP

Checked
LS

Drawing No.
470/23/S73/PL10.02

Revision
-