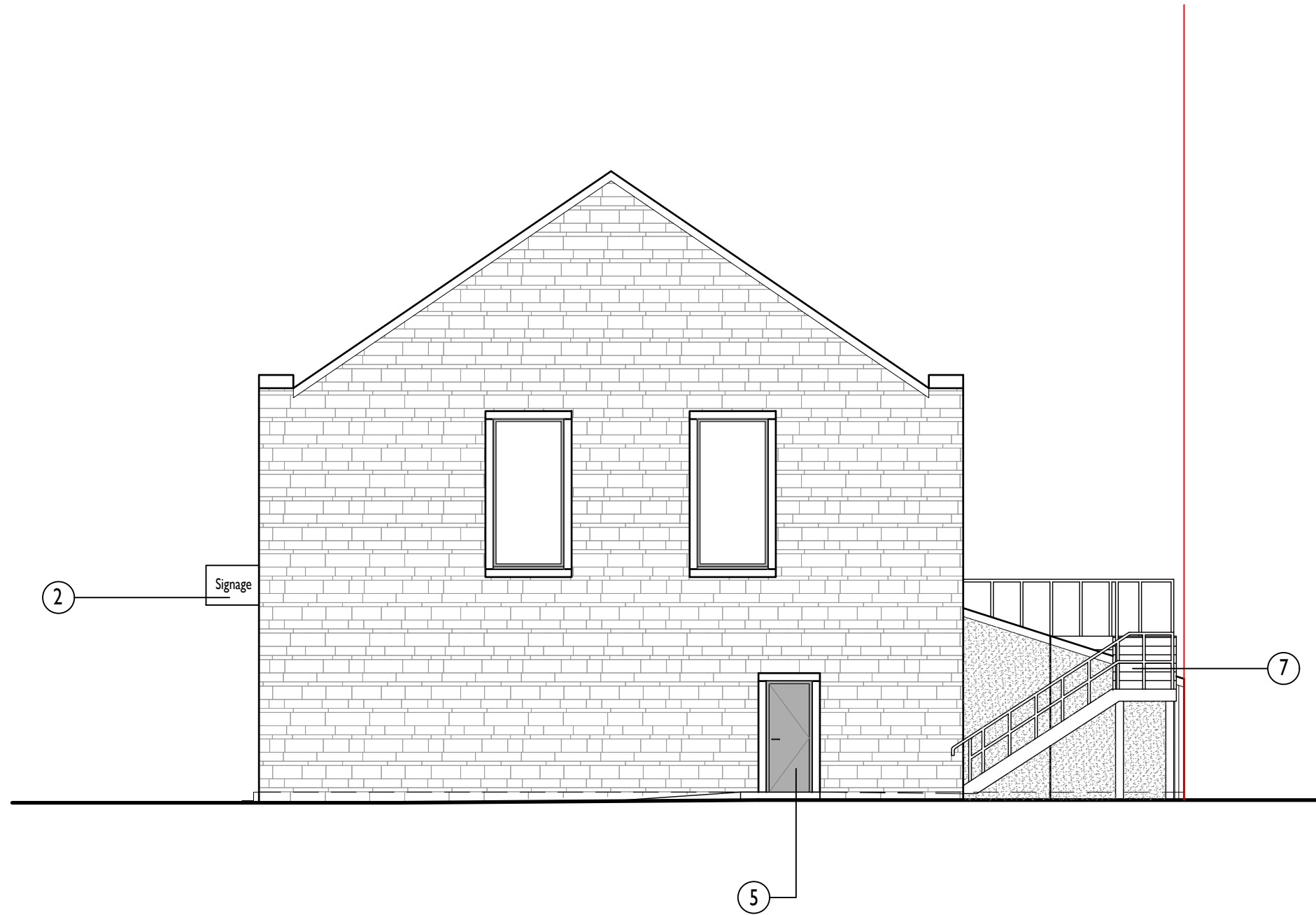


- ① New Opening light to existing window
- ② New luminated signage, size and artwork tbc
- ③ Door removed wall infilled, finish to match existing
- ④ New window colour white to match existing
- ⑤ New external timber door painted black to match existing
- ⑥ New external timber door with glazed dead panel above
- ⑦ New external escape stair, galvanised open mesh stair treads with galvanised steel balustrade and handrail



| As Proposed Side Elevation 1:100

