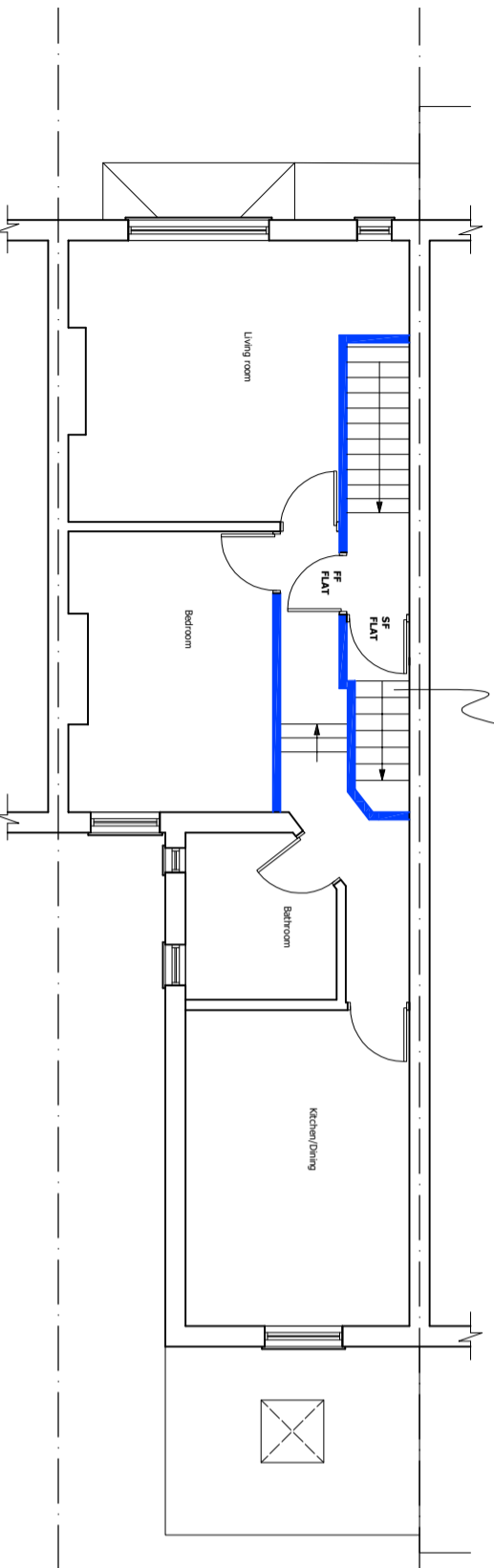
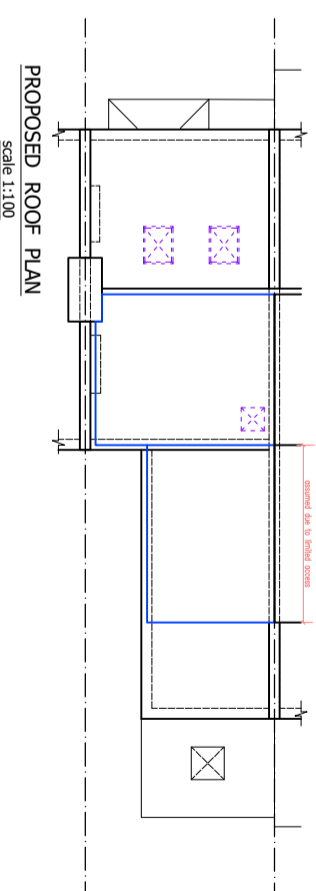


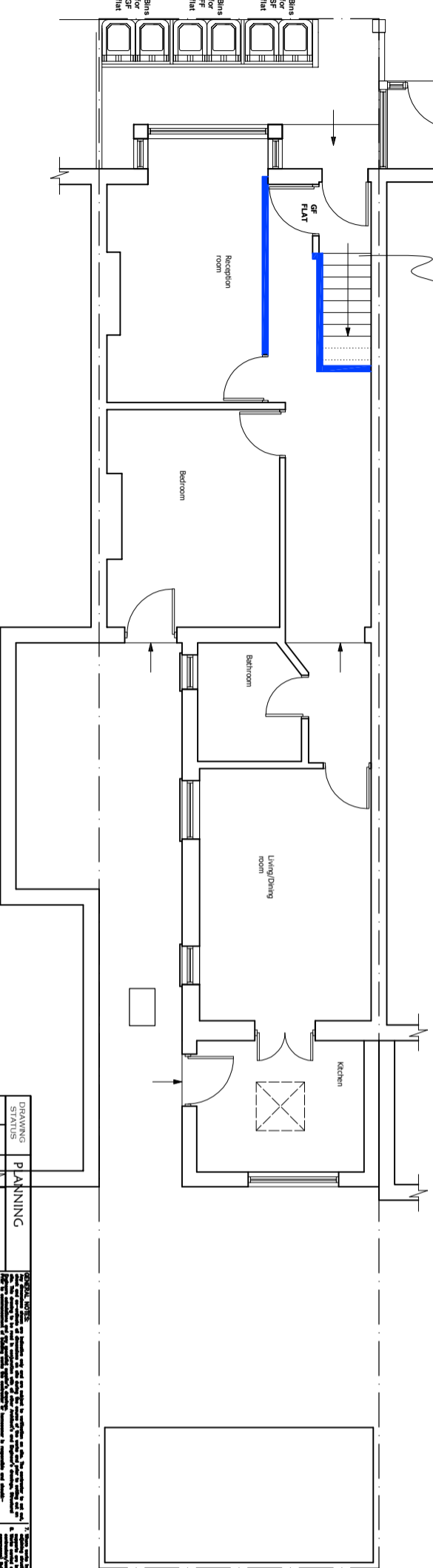
PROPOSED LOFT PLAN
Scale 1:50



PROPOSED FIRST FLOOR PLAN
Scale 1:50



PROPOSED ROOF PLAN
Scale 1:100



PROPOSED GROUND FLOOR PLAN
Scale 1:50

DRAWING STATUS		PLANNING	
NO.	DATE	NO.	DESCRIPTION

QMD Architectural Consultants
020 8813 7794
qm.designs@bt.com

NOTES:
1. The client has approved the proposed works.
2. The proposed works are to be carried out in accordance with the Building Regulations and the relevant Approved Documents.
3. The proposed works are to be carried out in accordance with the relevant British Standards.
4. The proposed works are to be carried out in accordance with the relevant local authority requirements.
5. The proposed works are to be carried out in accordance with the relevant planning requirements.
6. The proposed works are to be carried out in accordance with the relevant environmental requirements.
7. The proposed works are to be carried out in accordance with the relevant health and safety requirements.
8. The proposed works are to be carried out in accordance with the relevant fire safety requirements.
9. The proposed works are to be carried out in accordance with the relevant accessibility requirements.
10. The proposed works are to be carried out in accordance with the relevant energy efficiency requirements.
11. The proposed works are to be carried out in accordance with the relevant noise requirements.
12. The proposed works are to be carried out in accordance with the relevant air quality requirements.
13. The proposed works are to be carried out in accordance with the relevant water efficiency requirements.
14. The proposed works are to be carried out in accordance with the relevant waste management requirements.
15. The proposed works are to be carried out in accordance with the relevant recycling requirements.
16. The proposed works are to be carried out in accordance with the relevant resource efficiency requirements.
17. The proposed works are to be carried out in accordance with the relevant climate change requirements.
18. The proposed works are to be carried out in accordance with the relevant biodiversity requirements.
19. The proposed works are to be carried out in accordance with the relevant green infrastructure requirements.
20. The proposed works are to be carried out in accordance with the relevant blue infrastructure requirements.
21. The proposed works are to be carried out in accordance with the relevant brown infrastructure requirements.
22. The proposed works are to be carried out in accordance with the relevant grey infrastructure requirements.
23. The proposed works are to be carried out in accordance with the relevant white infrastructure requirements.
24. The proposed works are to be carried out in accordance with the relevant black infrastructure requirements.
25. The proposed works are to be carried out in accordance with the relevant green infrastructure requirements.

PRINT @ A1 SHEET SIZE
QMD 02

SITE ADDRESS
141 Cayle Road London E17 6BS

DRAWING TITLE
PROPOSED DRAWINGS

SCALE OF SHEET
A1

DATE
08 Jan 2024

