

6

Mark S Feather BSc M Arb(RFS) Tech Arbor A MICFor

Arboricultural, Woodland and Landscape Consultant

10 Grosvenor Place, Beverley, East Yorkshire HU17 8LY (01482 871064)

Landscape Report
Holiday Lodges
Yoke Fleet Cottages
Anserdame Lane
Gilberdyke
East Riding of Yorkshire

December 2023

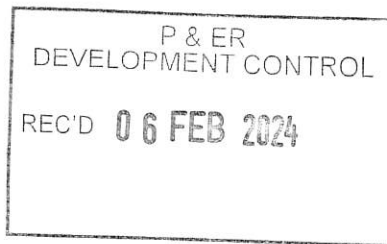
Client

Terence W G Litten MCIAT
30 West End Road
Cottingham
East Riding of Yorkshire
HU16 5PN



Contents

| | | |
|-----|---------------------------------------|---|
| 1.0 | Introduction | 3 |
| 2.0 | Site Plan – (Plan 1A and 1B) | 4 |
| 3.0 | Planting Proposals | 5 |
| 4.0 | Appendix A – Landscape Specifications | 6 |
| | | |
| | | |
| | | |
| | | |
| | | |
| | | |
| | | |

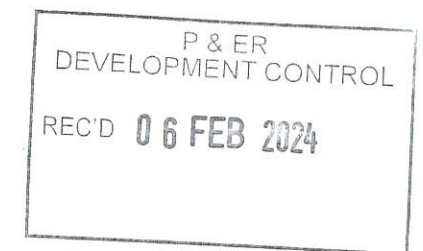


1.0 INTRODUCTION

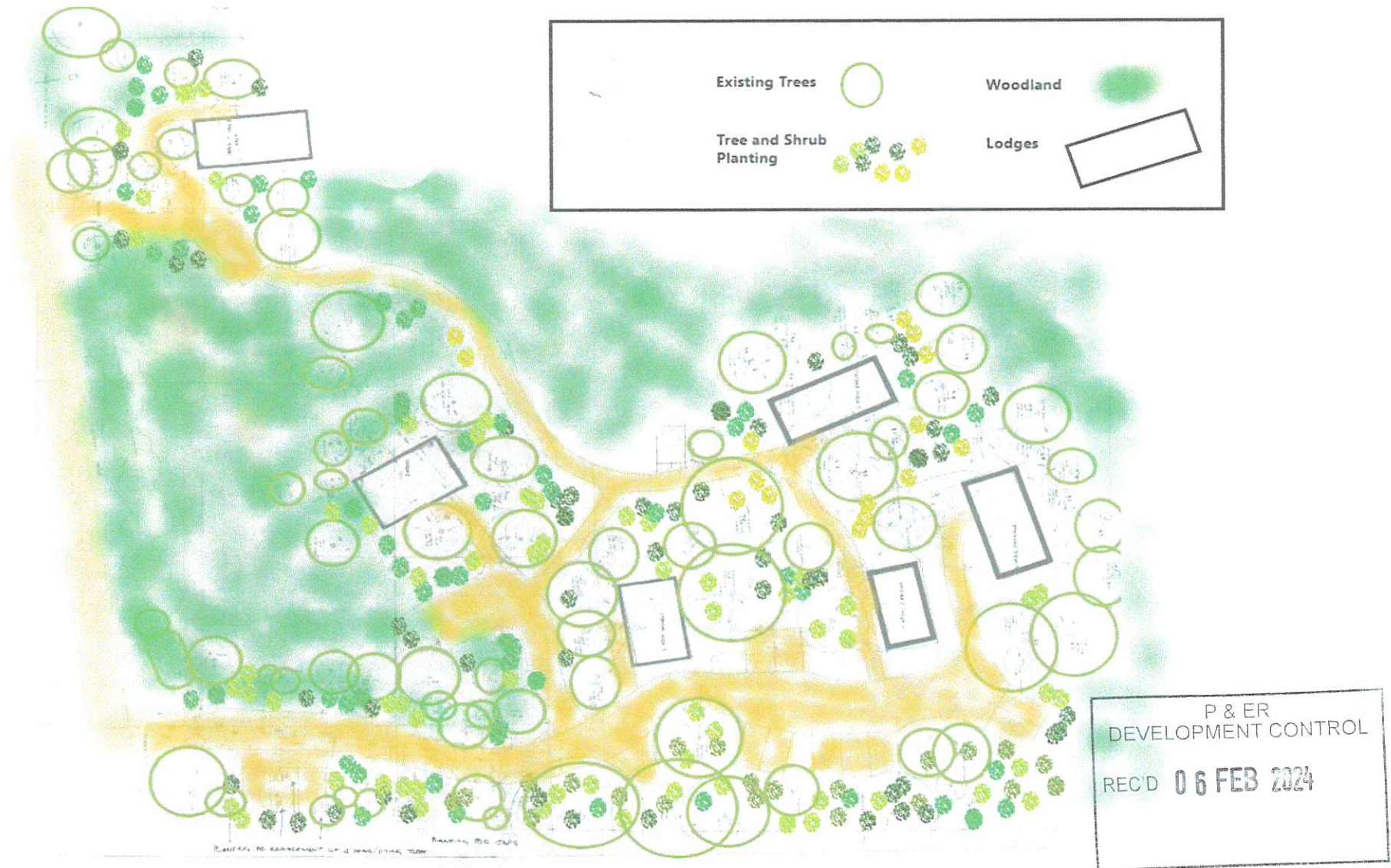
This report provides details of an indicative landscaping scheme to enhance the setting of 6 holiday lodges proposed to be located within a woodland setting to the east of Answerdame Lane, Gilberdyke, as indicated in the location plan below.

The planting consists of native tree and shrub planting to provide some screening between the units and enhance their setting. The planting will also increase the species diversity and have benefit to wildlife.

Location Plan 1A



2.0 LANDSCAPE PLAN 1B



P & ER
DEVELOPMENT CONTROL

REC'D **06 FEB 2024**

3.0 PLANTING SCHEDULE

| Tree and Shrub Planting | Size | Number | Density |
|--|----------|------------------|--|
| Shrubs | | | |
| Hazel - <i>Corylus avellane</i> | 40-90cm | 100 | Bare root stock to be used and planted during the planting season November to March. Holly and yew to be containerised / pot grown plants – 3 litres. Shrubs to be protected in individual 0.75m shrub guards with suitable support stake. Shrubs planted in groups of up to 10 plants of the same species. |
| Hawthorn – <i>Crateagus monogyna</i> | 40-60cm | 100 | |
| Holly - <i>Ilex aquifolium</i> | 40-90cm | 50 | |
| Yew - <i>Taxus bacata</i> | 40-90cm | 50 | |
| Dogwood - <i>Cornus sanguinea</i> | 40-90cm | 50 | |
| Guelder Rose – <i>Viburnum opulus</i> | 40-90cm | 50 | |
| | | Total 400 | |
| Trees | | | |
| Field Maple – <i>Acer campestre</i> | 6 – 10cm | 10 | Bare root or containerised if outside the planting season. Tree protection in the form of spiral rabbit guard 0.75cm. Support by a suitable stake and tie Trees planted where clear canopy openings exist. Tress planted as individual and in groups of up 3 together. |
| Bird Cherry – <i>Prunus padus</i> | 6 – 10cm | 10 | |
| Silver Birch – <i>Betula pendula</i> | 6 – 10cm | 10 | |
| Crab Apple – <i>Malus sylvestris</i> | 6 – 10cm | 10 | |
| Common Cherry - <i>Pruns avium</i> | 6 – 10cm | 10 | |
| | | Total 50 | |

Planting Proposal

The tree species to be planted within selected areas where the tree has a clear canopy opening, sufficient to ensure adequate space for growth. Shrub planting may be undertaken beneath existing trees where it is deemed to have sufficient light to grow. Many of the shrub species are shade tolerant, so they should establish beneath the canopy of trees. The exact planting locations to be assessed on site to ensure the best planting locations.

Appendix A - LANDSCAPE SPECIFICATION

1.0 TREE AND SHRUB PLANTING DETAILS

- 1.2 **Preparation of ground** – The ground to be planted will be treated with an application of herbicide (glyphosate) at least 4 weeks prior to planting to produce an overall kill of ground vegetation. The ground will then be cultivated to a depth of 150mm before planting work commences. This work will ensure that any ground compaction will be broken up and weed competition removed.
- 1.3 **Planting Spacing** - The hedge planting and the shrub and tree planting will be undertaken at the density described in the planting schedule. The planting to be undertaken as indicated on plan 3A.
- 1.4 **Planting Method** – All plants are to be planted so that the top of the nursery mark is level with the final soil level. Trees to be planted in pits of adequate size to comfortably accommodate all the root system. All trees and shrubs to be protected and to be supported with a suitable stake and ties.
- 1.5 **Planting Stock** - All plants to conform to BS 3936 where applicable. Trees should have a sturdy and well-defined straight leader. All plants to have a good root system, vigorous with a good fibrous growth. Plants to meet the sizes stated in the planting schedule.

1.6 PROGRAMME OF IMPLEMENTATION

Planting to be undertaken following completion of construction work with bare root and containerised stock during the first available planting season.

1.7 MAINTENANCE

A programme of maintenance will ensure that all trees and shrubs that fail to make active growth are replaced during the first available planting season for the first 3 years.

