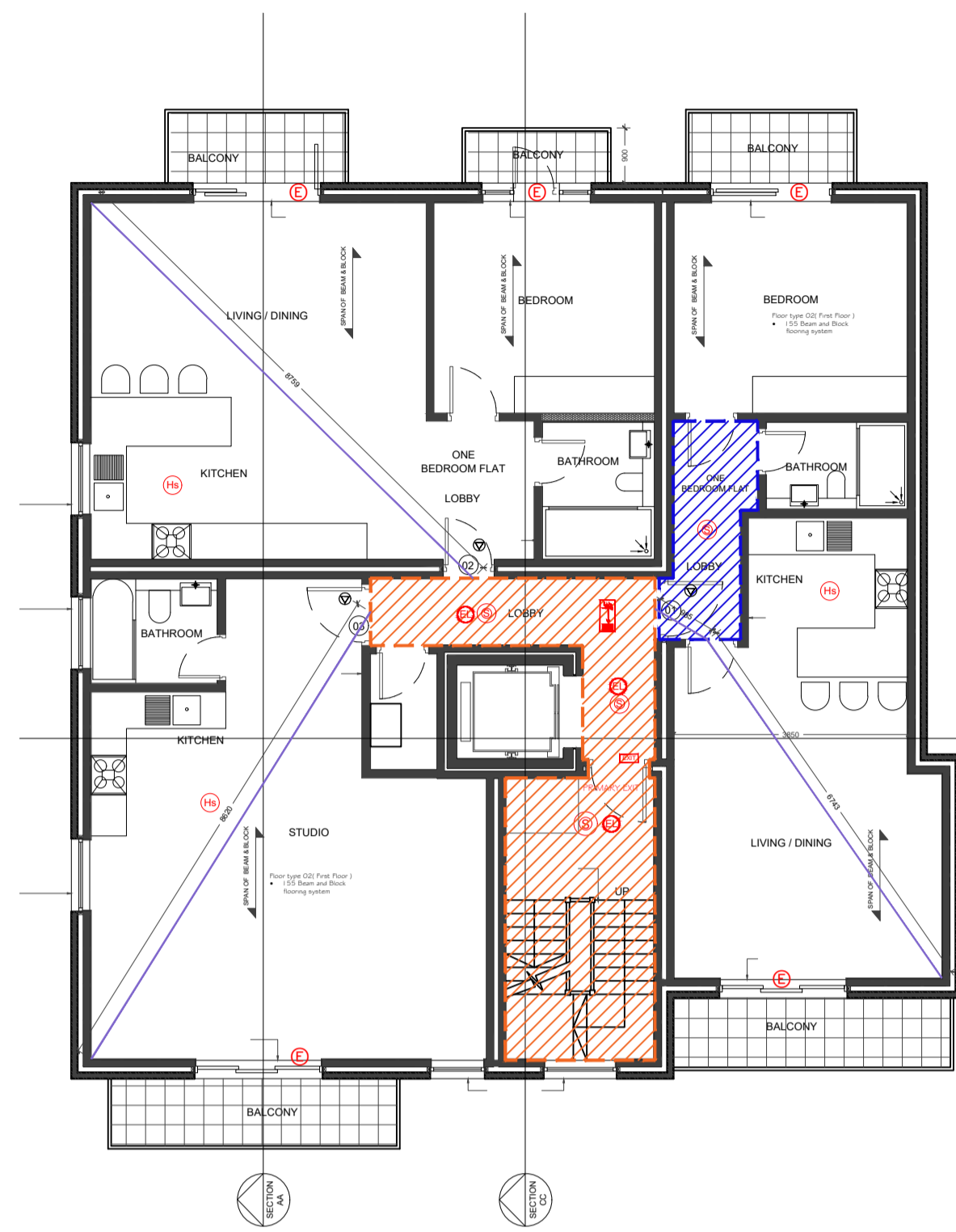
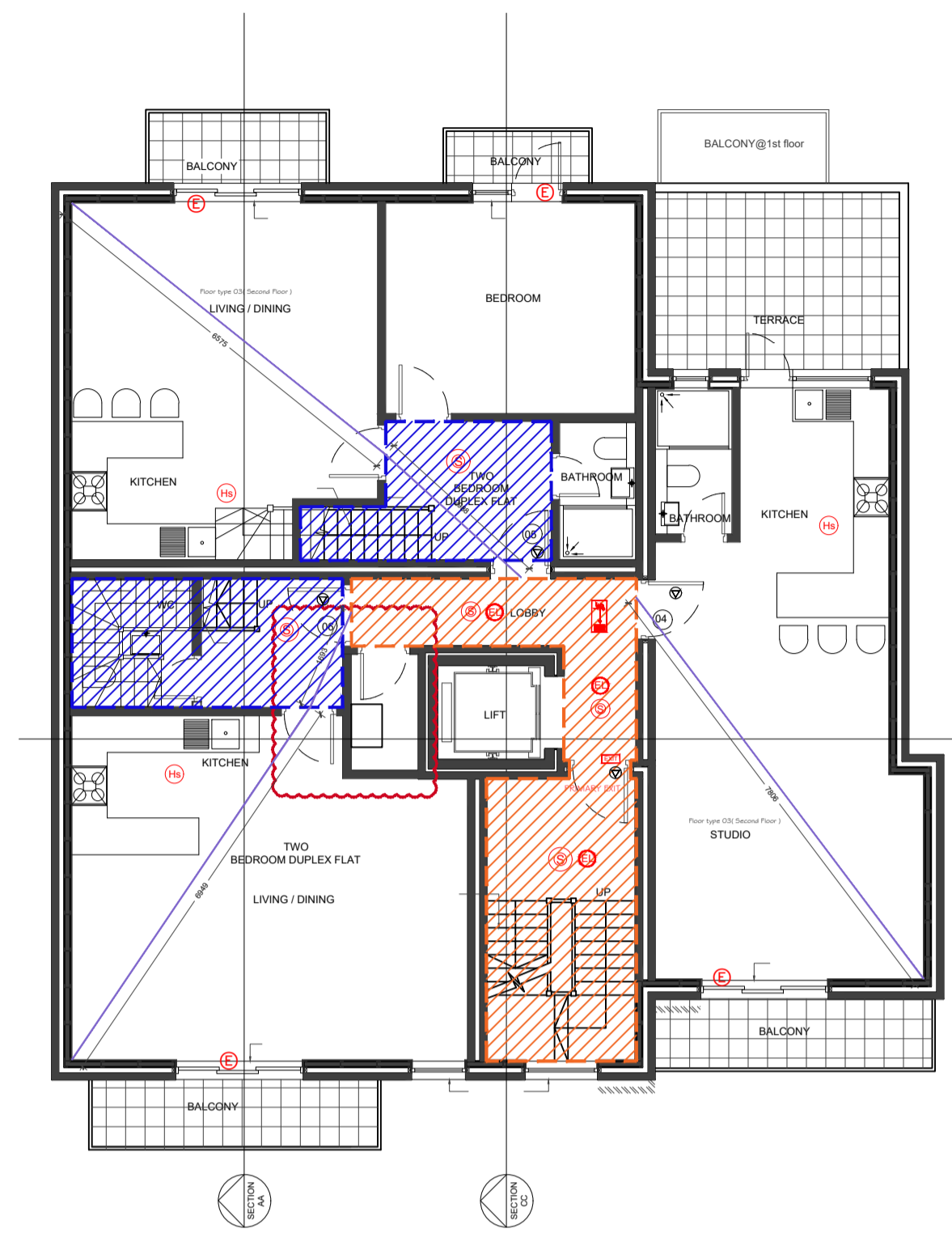


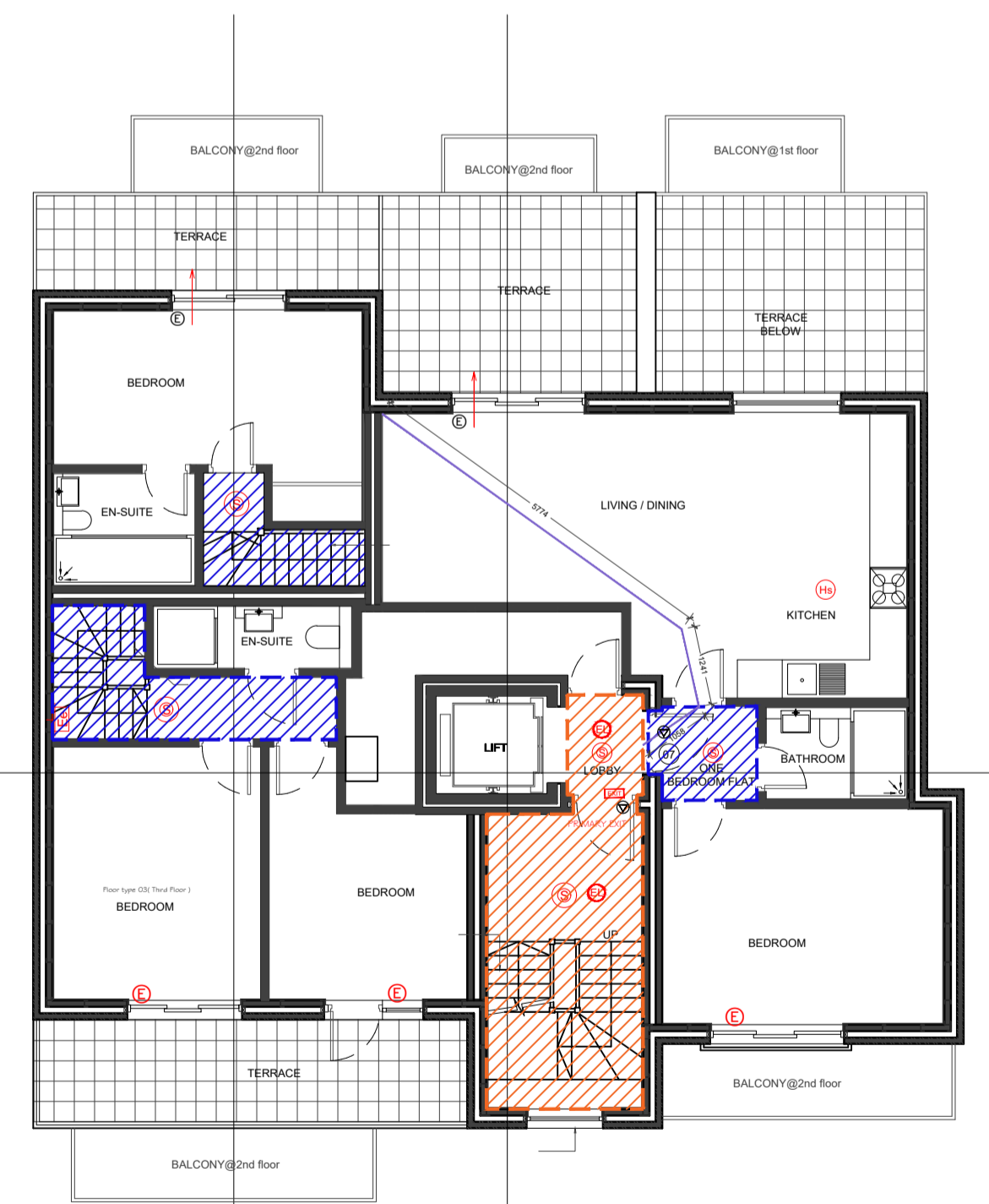
01 - GROUND FLOOR PLAN



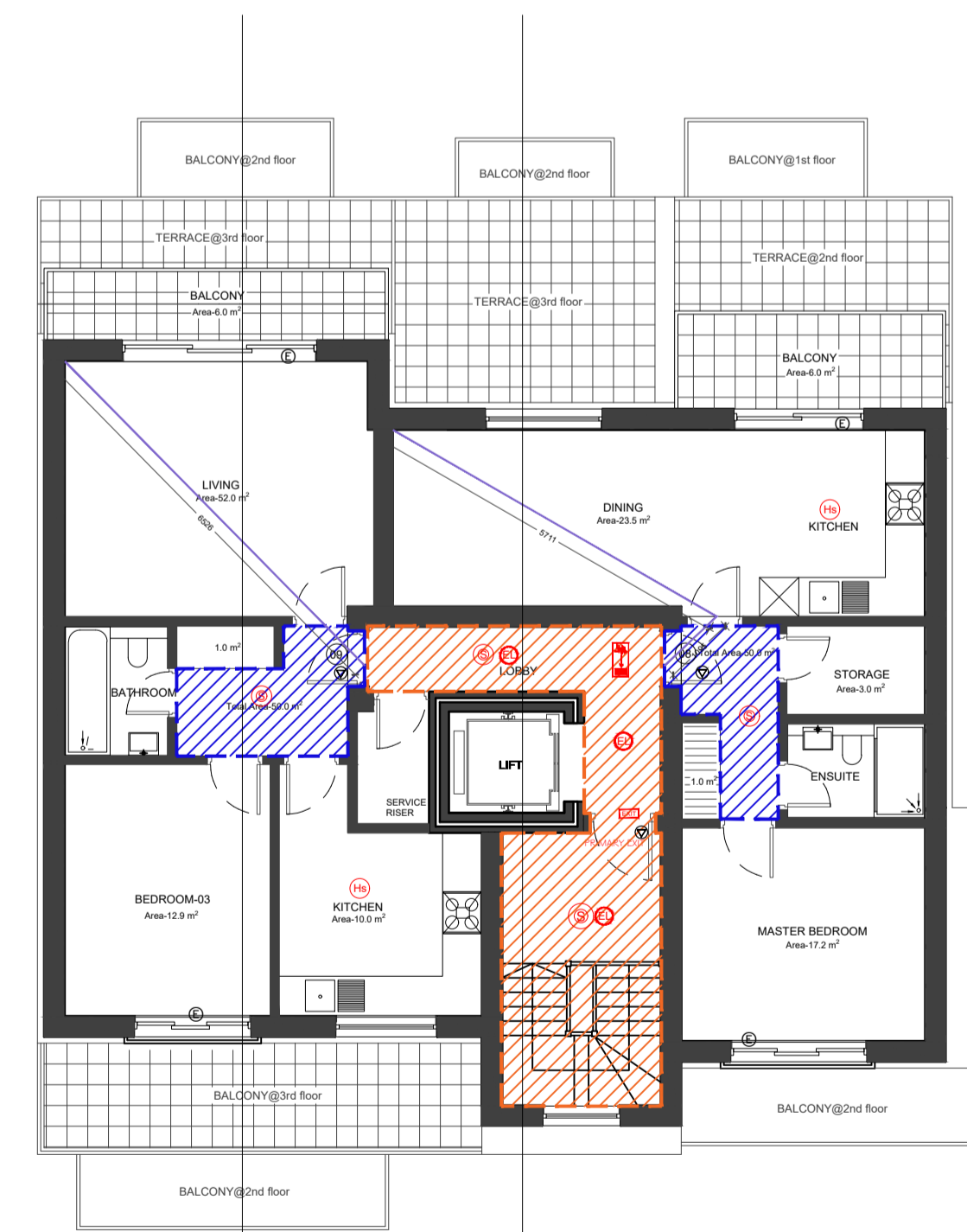
02 - FIRST FLOOR PLAN



03 - SECOND FLOOR PLAN



04 - THIRD FLOOR PLAN



05 - FOURTH FLOOR PLAN

- FIRE PANEL**
  - FIRE ALARMS** FIRE ALARM SYSTEM COMPLY WITH BS 5839
    - PRIMARY EXIT
    - ALTERNATIVE EXIT
    - FR60 MIN FIRE RESISTANCE COMPARTMENT
    - FR30 MIN FIRE RESISTANCE COMPARTMENT
    - PRIMARY ESCAPE ROUTE
  - S** SMOKE DETECTOR/ALARM TO COMPLY WITH BS EN 14604
  - Hs** HEAT SENSOR/ALARM COMPLY WITH BS 5466 2:2016 (MUST HAVE STAND-BY POWER SUPPLY SUCH AS BATTERY OR CAPACITOR)
  - EL** EMERGENCY LIGHTING TO BE INSTALLED IN ACCORDANCE WITH BS 5266:2016
  - FA** FIRE ALARM (MUST HAVE STAND-BY POWER SUPPLY SUCH AS BATTERY OR CAPACITOR)
  - EXIT** FIRE EXIT SIGN COMPLY WITH BS 5499
  - E** EMERGENCY ESCAPE WINDOW
  - FIRE ESCAPE ROUTE
  - △** MAIN ESCAPE DOOR
  - FD60** FD60 FIRE DOOR (FIRE CHECK DOORS 60 MIN. FIRE RESISTANCE WITH SMOKE SEAL AND SELF CLOSING)
  - FD30** FD30 FIRE DOOR (FIRE CHECK DOORS 30 MIN. FIRE RESISTANCE WITH SMOKE SEAL AND SELF CLOSING)
- SPRINKLER SYSTEM- SPRINKLER SYSTEM INSTALLED TO THE WHOLE BUILDING TO COMPLY WITH BS8458 2015. new flats will have an extension of the similar system.
- NOTE- ALL THE MAIN FLAT DOORS SHOULD HAVE THUMB TURNS FROM INSIDE WITH SELF CLOSURE.
- Scale 1:100
- 

REVISIONS			
NO.	DESCRIPTION	DATE	BY

**DESIGN ENDEAVOURS**  
M: 07869580774, 07883602259  
E: design.endeavour@gmail.com

---

Project **755-757 LONDON ROAD**  
LONDON, CR7 6AW

Title **PROPOSED FLOOR PLANS**  
**FIRE STRATEGY LAYOUT**

Scale <b>1:100@A1</b>	Drawn <b>FA</b>	Approved	Date <b>FEB 24</b>
Job No. <b>DAC-140/23</b>	Drawing No. <b>PF-757CR-01-FS</b>	Rev.	-