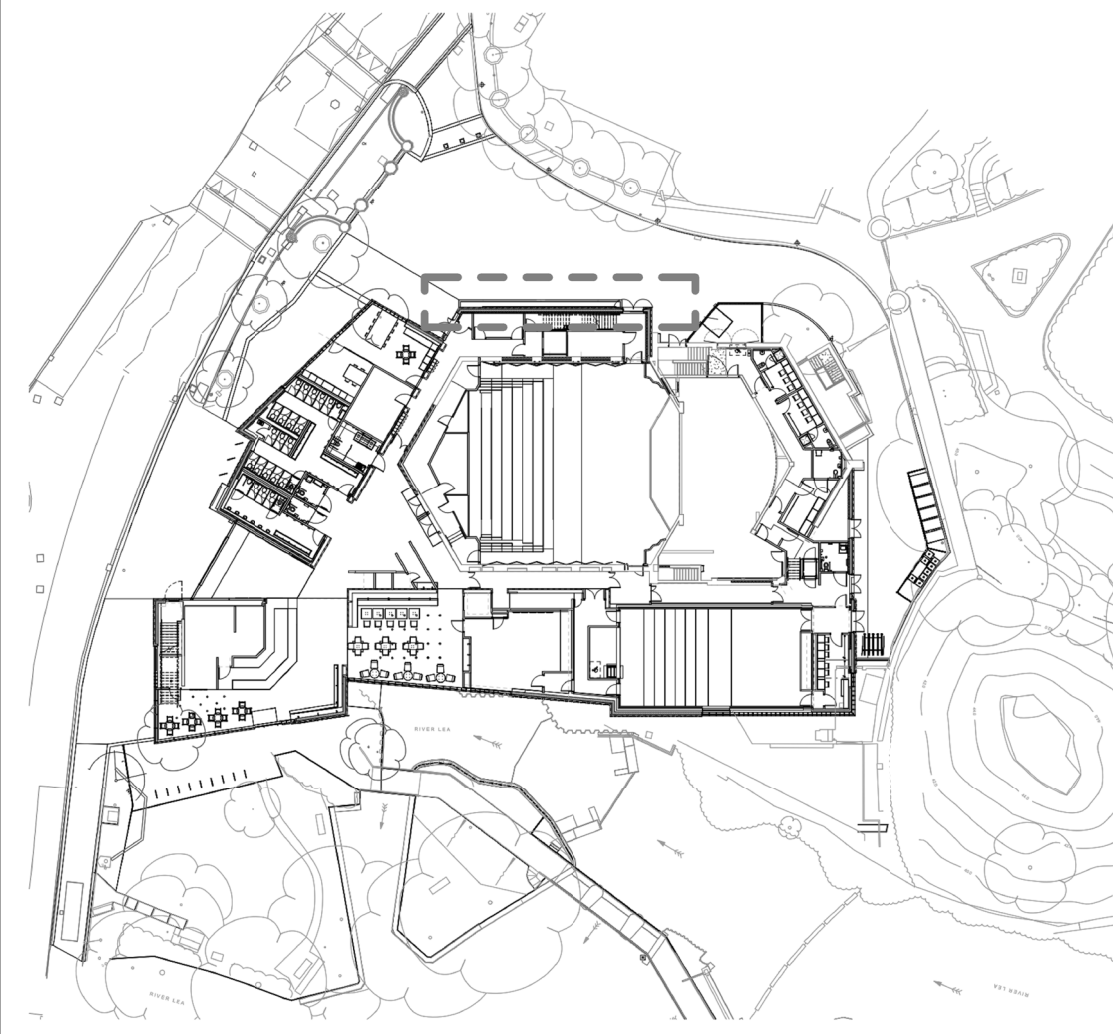
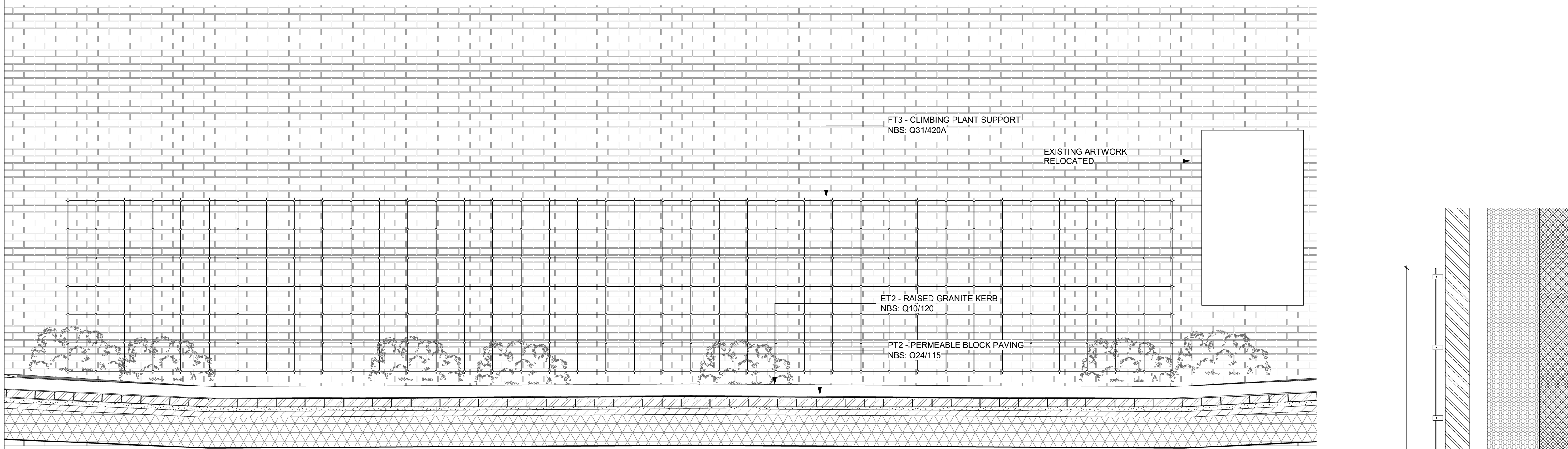


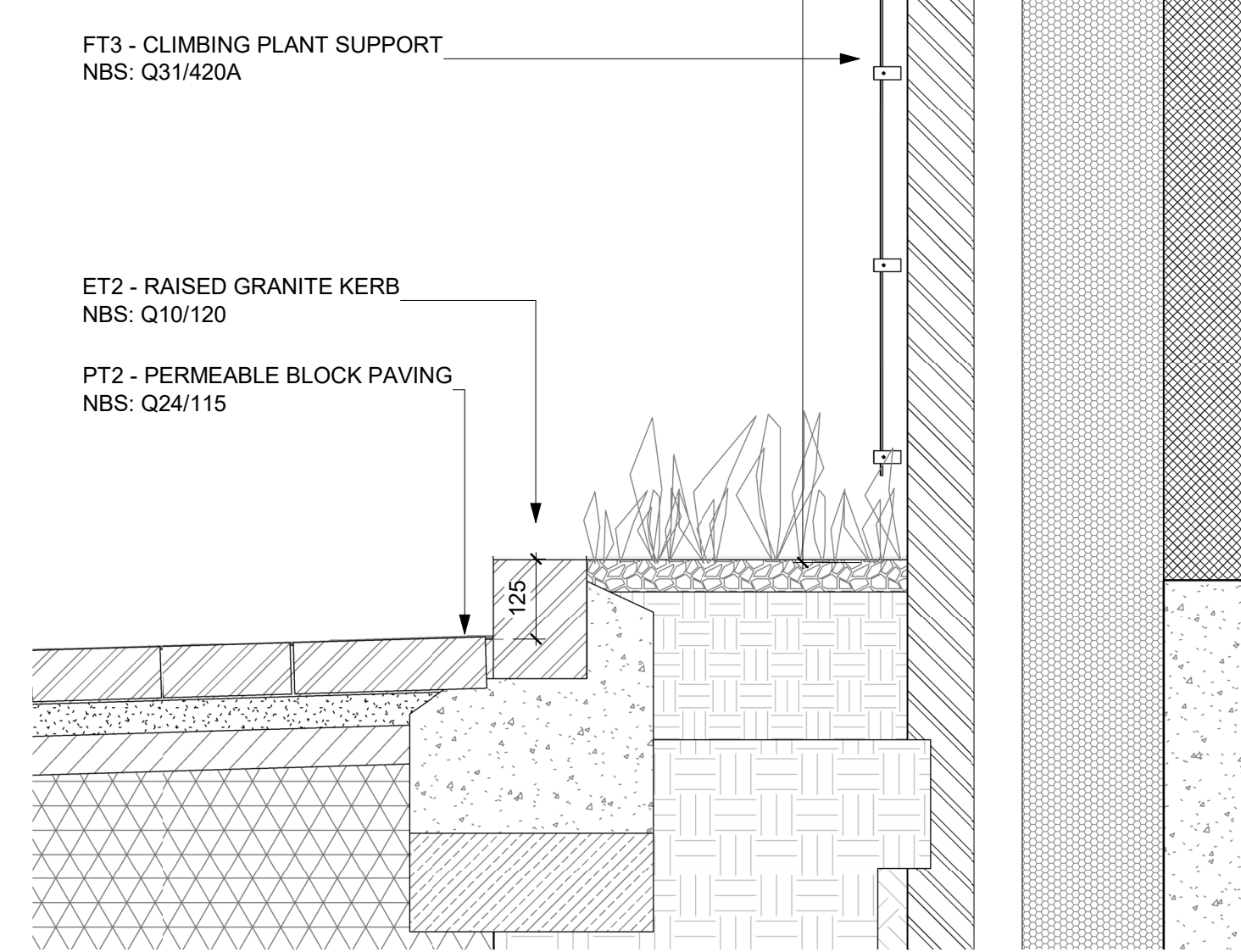
1 Climber planting - Detailed plan  
Scale 1 : 25



LOCATION PLAN



2 Detailed Section - Trellis  
Scale 1 : 25



3 Typical Detail - Climber planting  
Scale 1 : 10

Notes  
1. This drawing is the property of fabrik ltd. It must not be copied or reproduced without written consent.  
2. Only figured dimensions are to be taken from this drawing. All contractors must visit site and be responsible for taking and checking all dimensions related to the works shown on the drawing.

No.	Date	Reason	Name
T06	09/12/2022	Issued for Tender / Stage 4 - VE changes	AC
T05	30/11/2022	Issued for Tender / Stage 4 - VE changes DRAFT	AC
T04	13/09/2022	Issued for Tender / Stage 4 - amendments	AC
T03	13/05/2021	Issued for Tender / Stage 4	AC
T02	05/03/2021	Issued for Tender - DRAFT	AC
T01	12/02/2021	Issued for Tender - DRAFT	AC

**fabrik**

Lenten House  
16 Lenten Street  
Alton  
Hampshire  
GU34 1HG

T : 01420 593250  
E : alton@fabrikuk.com  
W : www.fabrikuk.com

Project  
**Hertford Theatre for  
East Herts District Council**

Drawing  
**Climber planting - Design Intent**

Scale	Date	Approved	Checked	Drawn
As indicated@A1	Feb '21	-	RW	AC

Project No.	Drawing No.	Revision
D2823	FAB-XX-XX-DR-L	4022 T06

- Preliminary
- Issued for Planning Approval
- Issued for Construction
- Issued for Design/Information
- Issued for Tender
- As Built