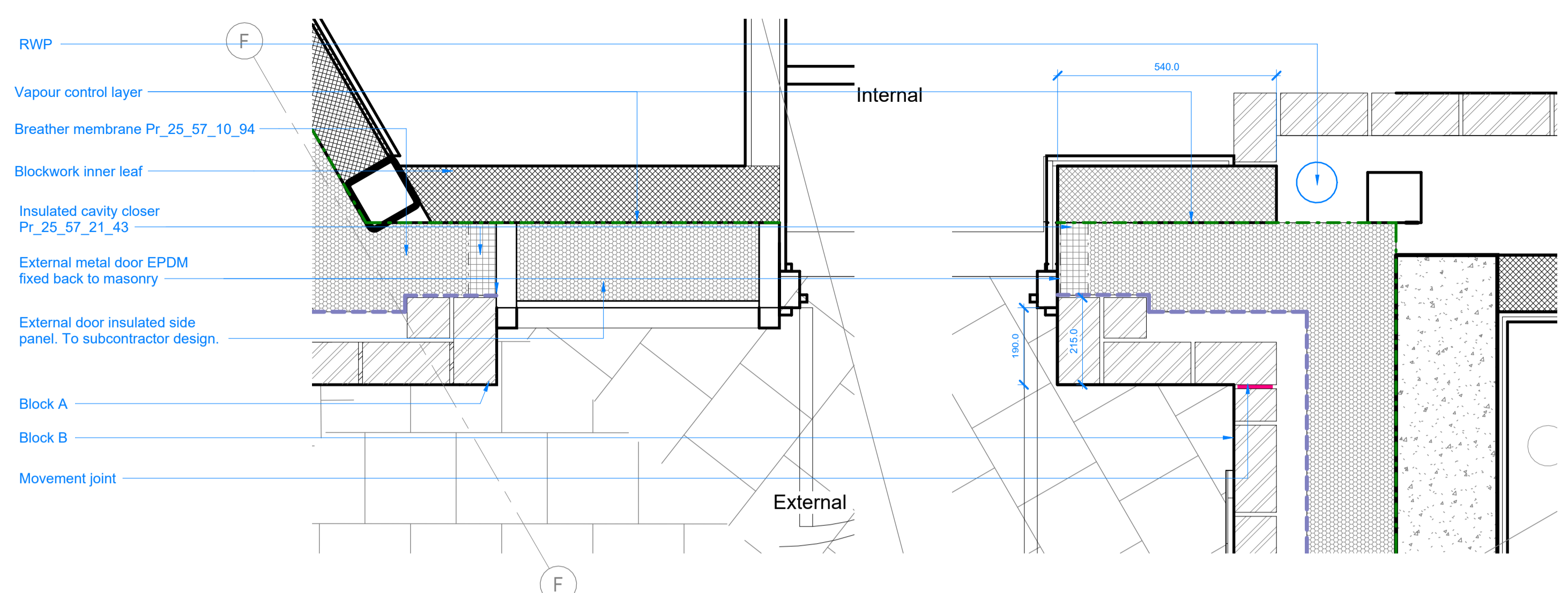
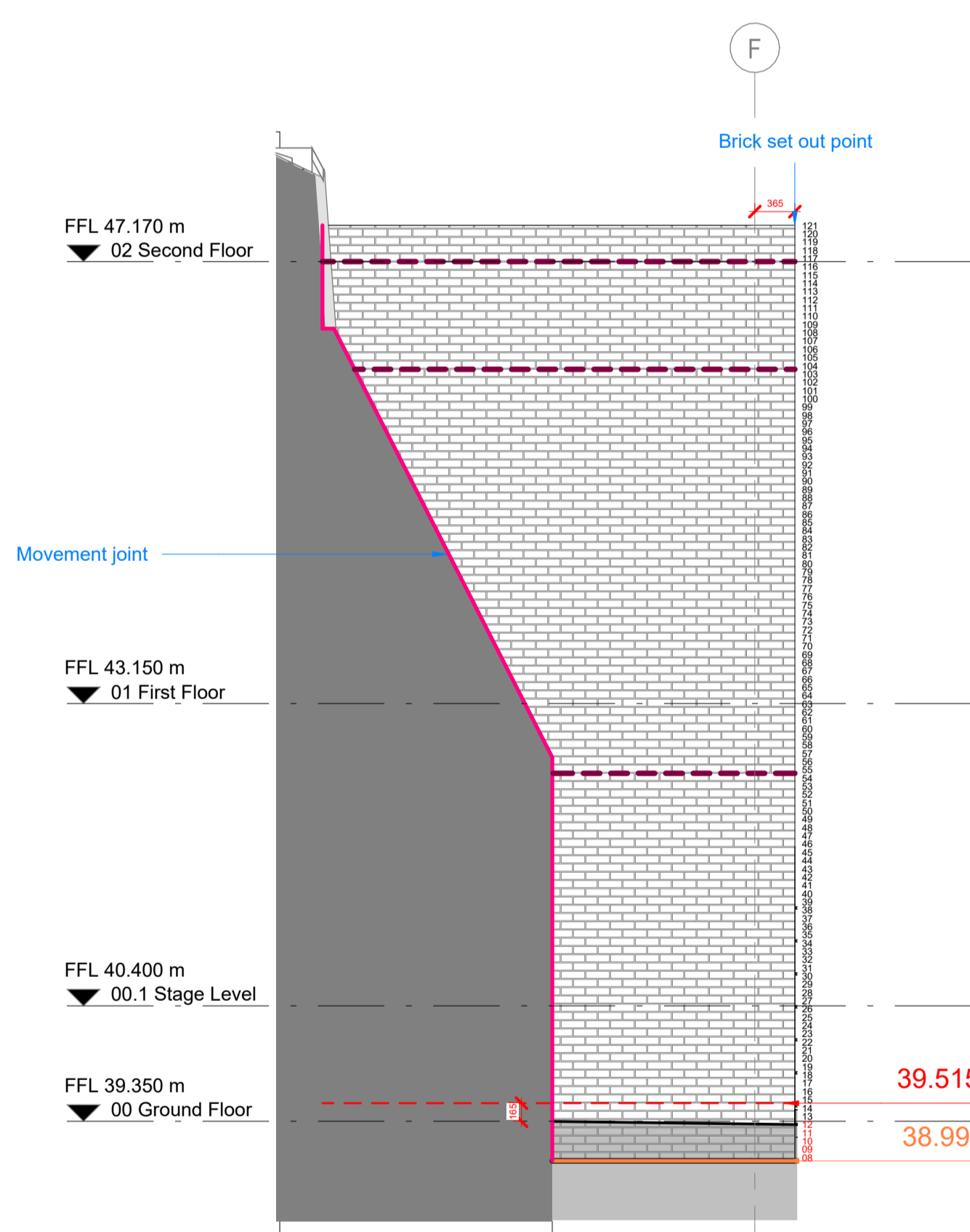


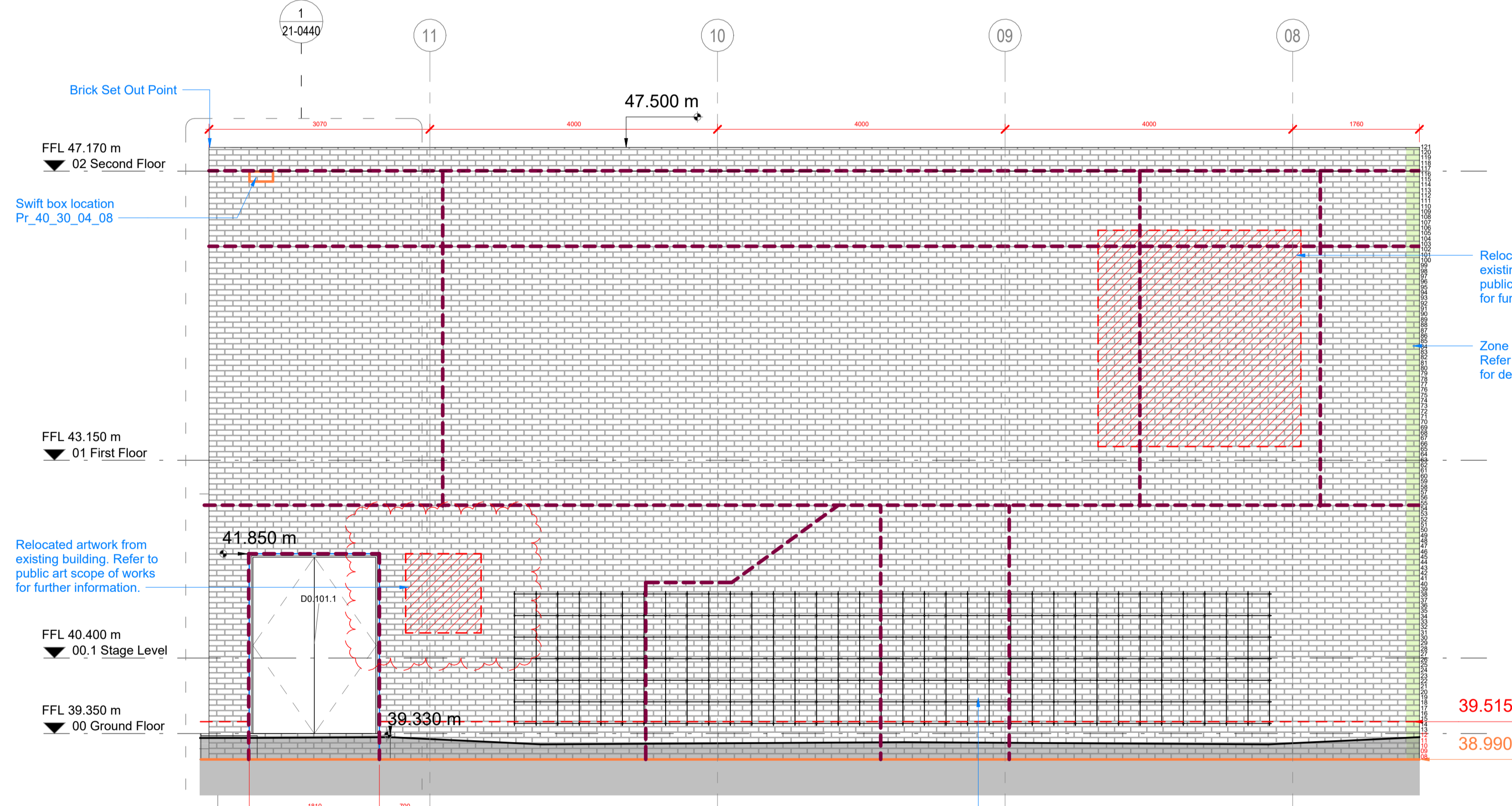
4 Ground Floor
Block A, Existing Pier and Proposed Brick Plan Junction
1 : 10



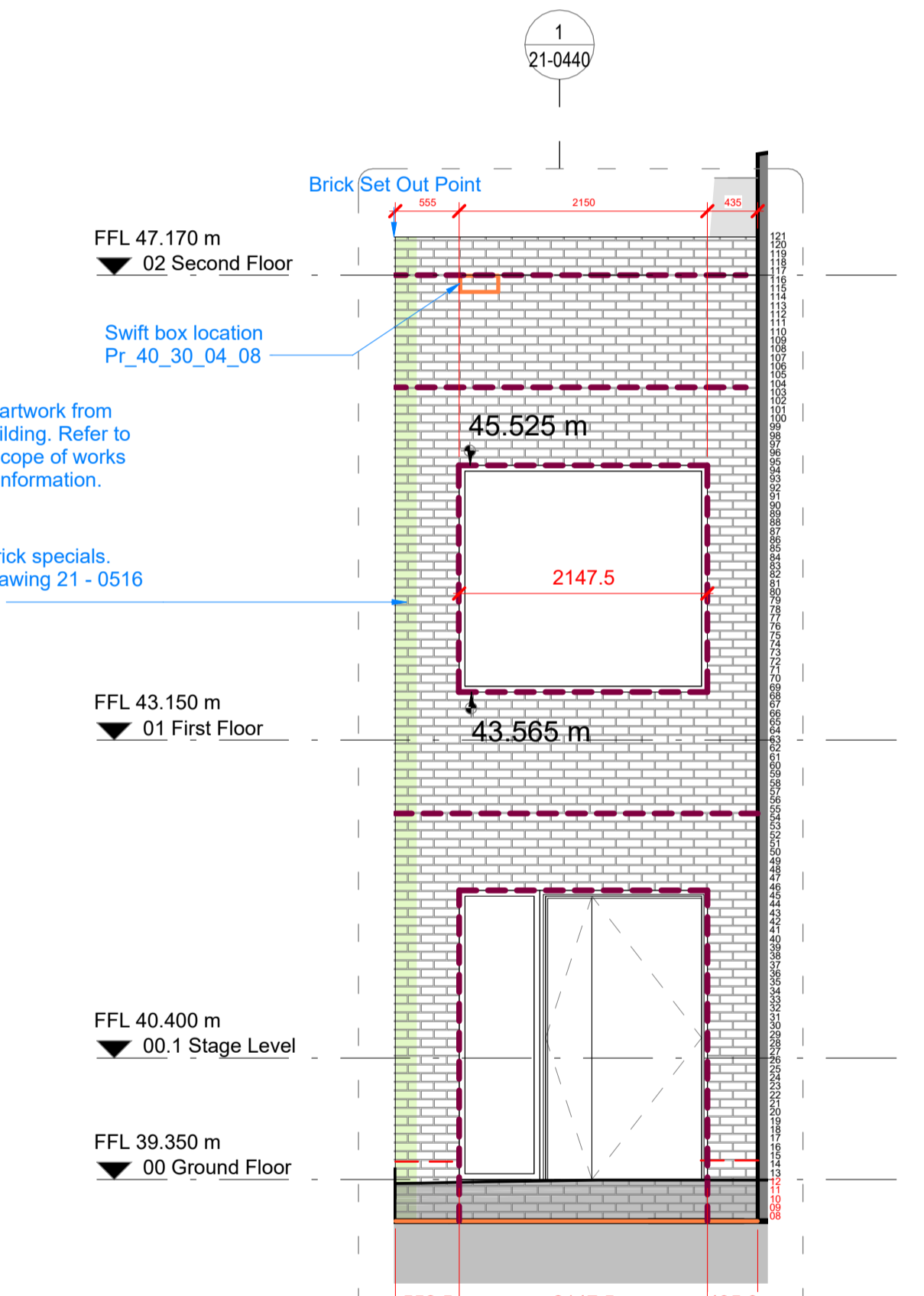
5 Ground Floor
Block A & B Junction, Corner Detail a
1 : 10



1 Block A, Escape Core, South Elevation 1
1 : 50



2 Block A, Escape Core, East Elevation 2
1 : 50



3 Block A, Escape Core, North Elevation 3
1 : 50

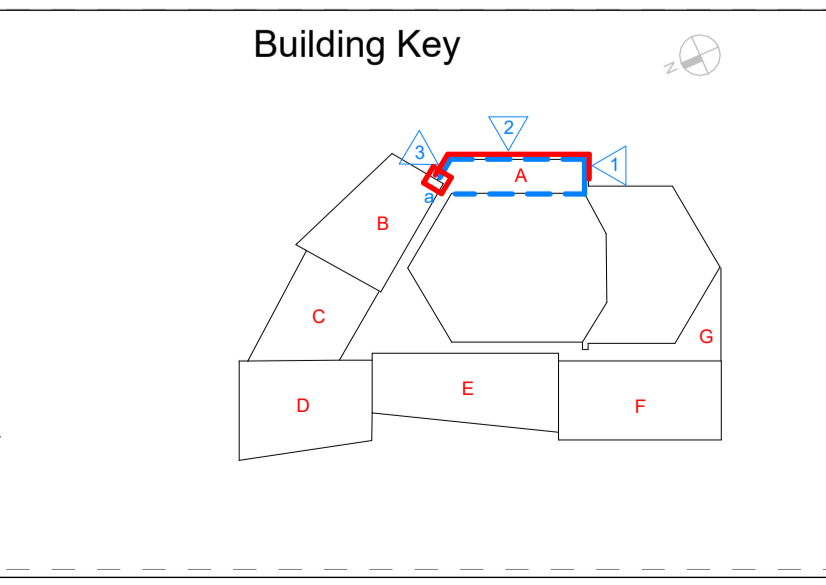
Refer to drawing 21-0516 for Corner
Specials
Refer to drawing 21-440 for Bay Study

Rev	Date	Revision	By	Chk	Notes
\	22/09/23	Issued for Comment	RD	KS	
A	22/11/11	Design Intent for Construction	RD	KS	
B	23/02/03	Design Intent for Construction	RD	KS	

Notes

- For Health & Safety related information please refer to the Rolling Designers Risk Register. Where relevant, elements identified on this register are highlighted within the model and on the drawings with the following logo.
- Drawing to be printed in colour.
- All information contained in this drawing (including digital data) should be checked and verified prior to any fabrication or construction. Any inconsistencies or omissions should be reported to Bennetts Associates.
- Unless otherwise stated, all grids or co-ordinates are based on the Ordnance Survey National Grid via GPS Observations.
- Unless otherwise stated, all spot heights and levels are expressed as AOD (above ordnance datum) based on the Ordnance Survey ODN (Ordnance Datum Newlyn).
- Bennetts Associates Architects make no warranties, express or implied, with respect to the reuse of the data provided hereafter, regardless of its format or the means of its transmission.
- All existing survey data is based on, or reference from, 3rd Party information. Unless otherwise stated, all structural, mechanical, electrical information is based on, or reference from, 3rd Party data.

© Crown Copyright 2019. All Rights Reserved.
Ordnance Survey License 123456



Key	Description
[Solid grey box]	Standard brick
[Green hatched box]	Zone for special corner bricks
[Red dashed line]	Movement Joint
[Orange dashed line]	Footing Level for reference only - refer to Integral information
[Black line]	Landscape
[Red dashed line]	DPM Level (setting out to be confirmed by waterproofing specialist)
[Red dashed line]	Cavity Barrier
[Yellow dashed line]	Thermal Line
[Blue dashed line]	Brick wall return/brick slip (internal)
[Green dashed line]	Bespoke brick shelf angle
[Red dashed line]	Load bearing, heat insulating block
[Red dashed line]	BWH. Cross reference with M&E engineers drawings.

General note: Drawings are to be cross referenced with bay studies, brick pattern setting out drawings, details, specials drawings and cladding types drawings.

Door and window openings to be co-ordinated and confirmed with suppliers and specialist sub-contractors.

BENNETTS ASSOCIATES

1 Rawstone Place, London EC1V 7NL
T +44 (0)207 5203300 • www.bennettsassociates.com
E mail@bennettsassociates.com

For Bennetts Associates' electronic information usage disclaimer - www.bennettsassociates.com/informationanddisclaimer/

Project
Hertford Theatre
East Herts District Council

Drawing Title
Brickwork
Brick Setting Out - A Escape Core
Fire Escape Door

Project No. 1910

Drawing Number
1910-BA-XX-XX-DR-A-21-0450

Revision/Suitability
S0 B

Revision Date
23/02/03

YY MM DD