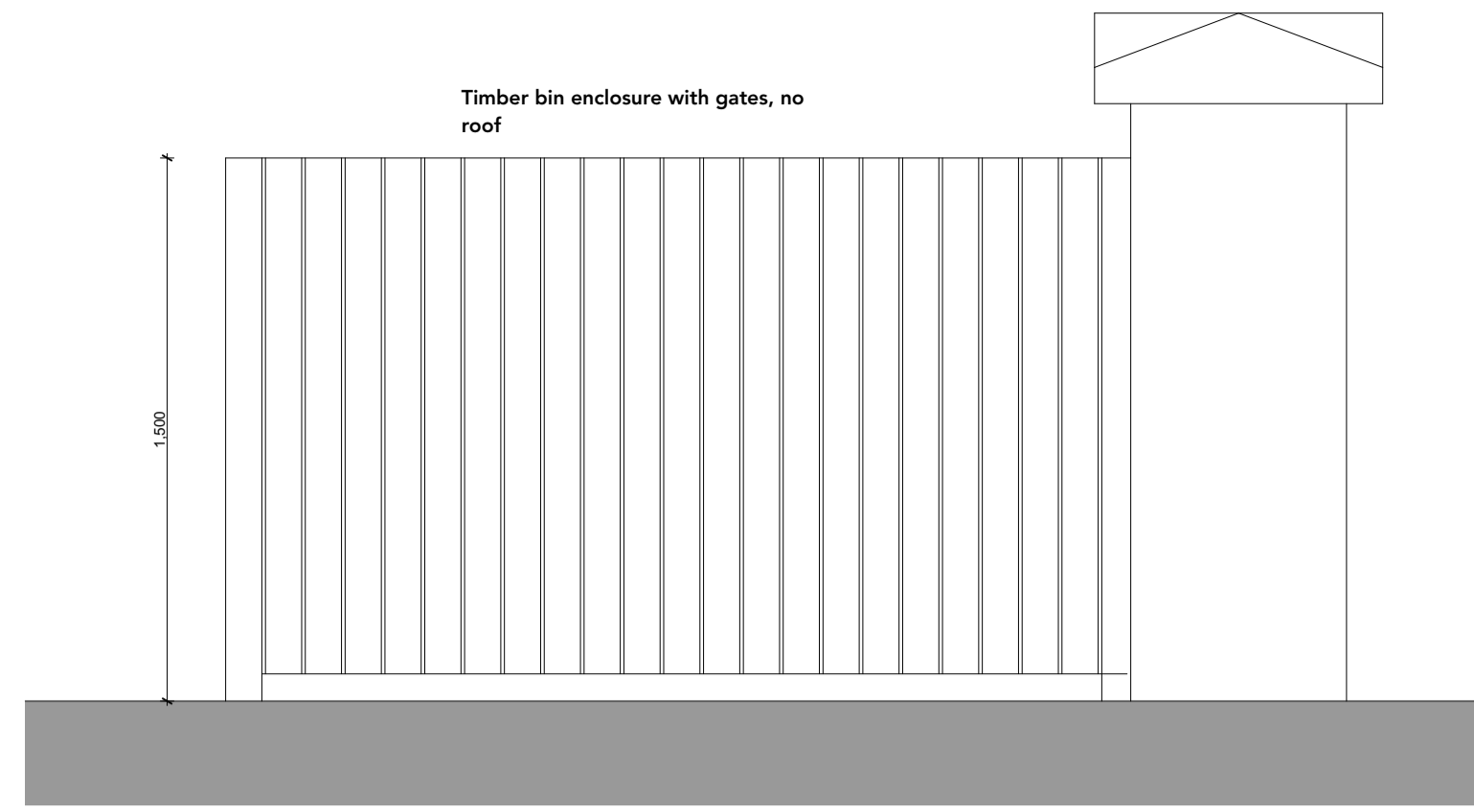
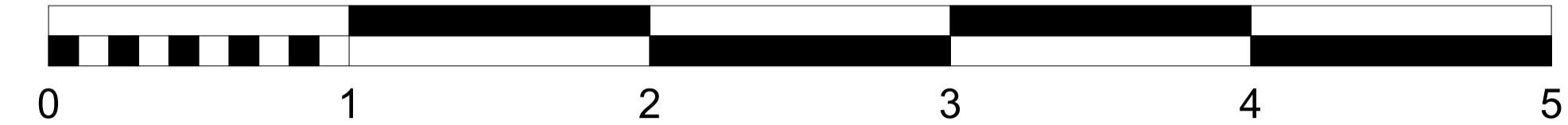


ELEVATION 1:
Front elevation of Bin Store



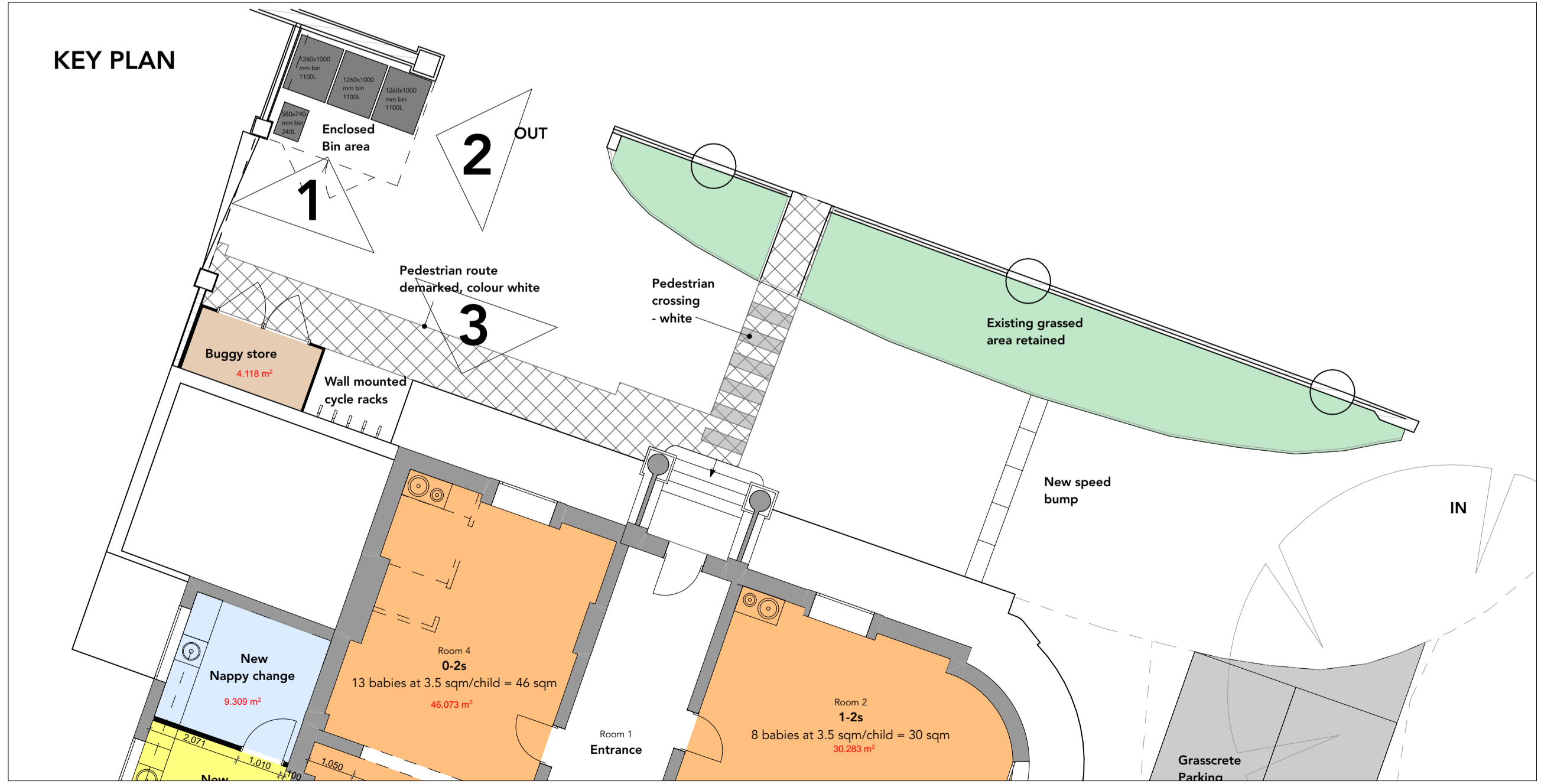
ELEVATION 2:
Side elevation of Bin Store



NOTES:
 THIS DRAWING IS FOR INFORMATION PURPOSES.
 DIMENSIONS AND SETTING OUT MUST BE CHECKED BY CONTRACTOR PRIOR TO ANY WORKS COMMENCING ON SITE.
 DO NOT SCALE FROM DRAWINGS AS HOLLOWAY FOO ASSOCIATES CANNOT ACCEPT RESPONSIBILITY FOR SCALED DRAWINGS.
 NOTE - SETTING OUT AND CO-ORDINATION TO BE CHECKED BY CONTRACTOR PRIOR TO ANY WORKS COMMENCING (IN PARTICULAR SEAMLESS JOINT BETWEEN EXISTING AND NEW FLOOR LEVELS AND ROOF TO BE CHECKED) AND DISCREPANCIES BOUGHT TO THE ATTENTION OF THE ARCHITECT AND CA PRIOR TO ANY ORDERS BEING PLACED, AND WORK EXECUTED.
 THE COPYRIGHT OF THIS DRAWINGS AND THE INFORMATION IT DEPICTS REMAINS FIRMLY WITH HOLLOWAY FOO ARCHITECTS
 This drawing and the articles shown are protected by the laws of copyright, unregistered design right, design registration and patents. No reproduction of the drawing or the articles shown may be made without prior written permission of Holloway Foo Associated Ltd. ALL RIGHTS RESERVED Holloway Foo Associates Ltd.



ELEVATION 3:
Front elevation of Buggy Store



REV	DESCRIPTION	DATE	CKD
A	Height and note added to buggy store	26/10/2023	CH
B	Incorrect title amended to Elevation 2	13/02/2024	CH
C	Scale Bar and North point added	20/02/2024	CH

**Sligo House, 2 Wellington Road,
Cheltenham, Gloucestershire,
GL52 2DY**

Bin & Buggy store details

Drawing no.	Revision	Scale
262_AP_403	C	1:100, 1:20 @ A1



Holloway Foo Architects
2nd Floor, 3 Brindleyplace
Birmingham, B1 1JB

T :: 0121 231 7330

www.hollowayfoo.com