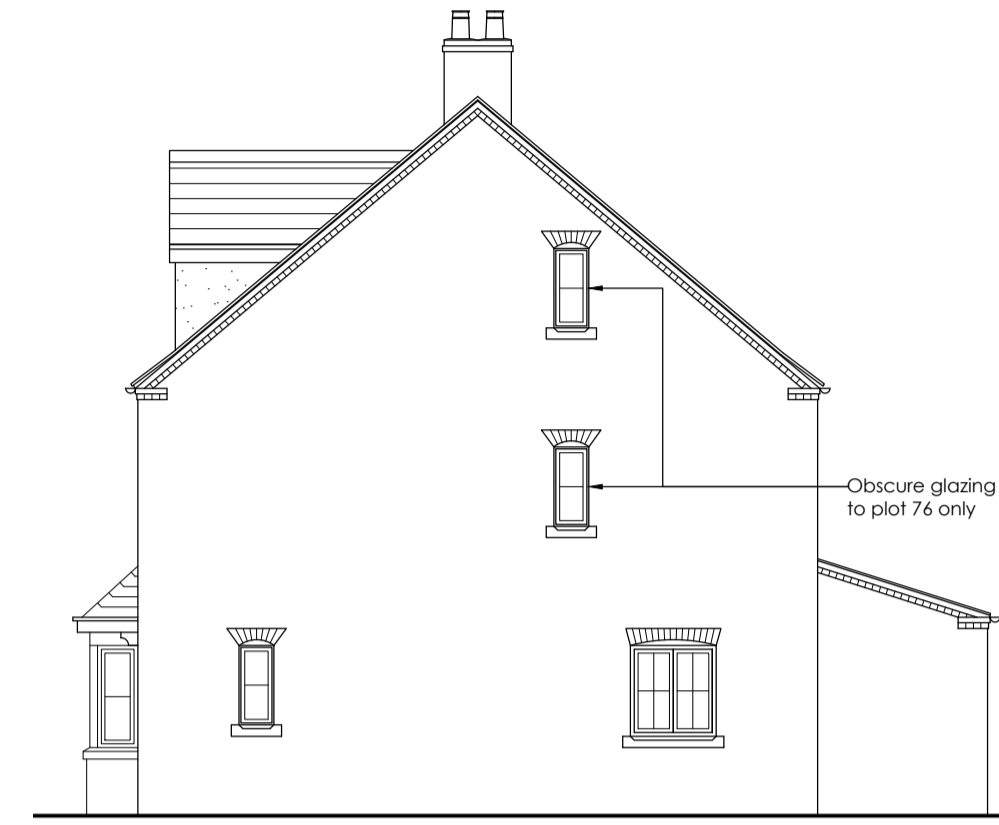


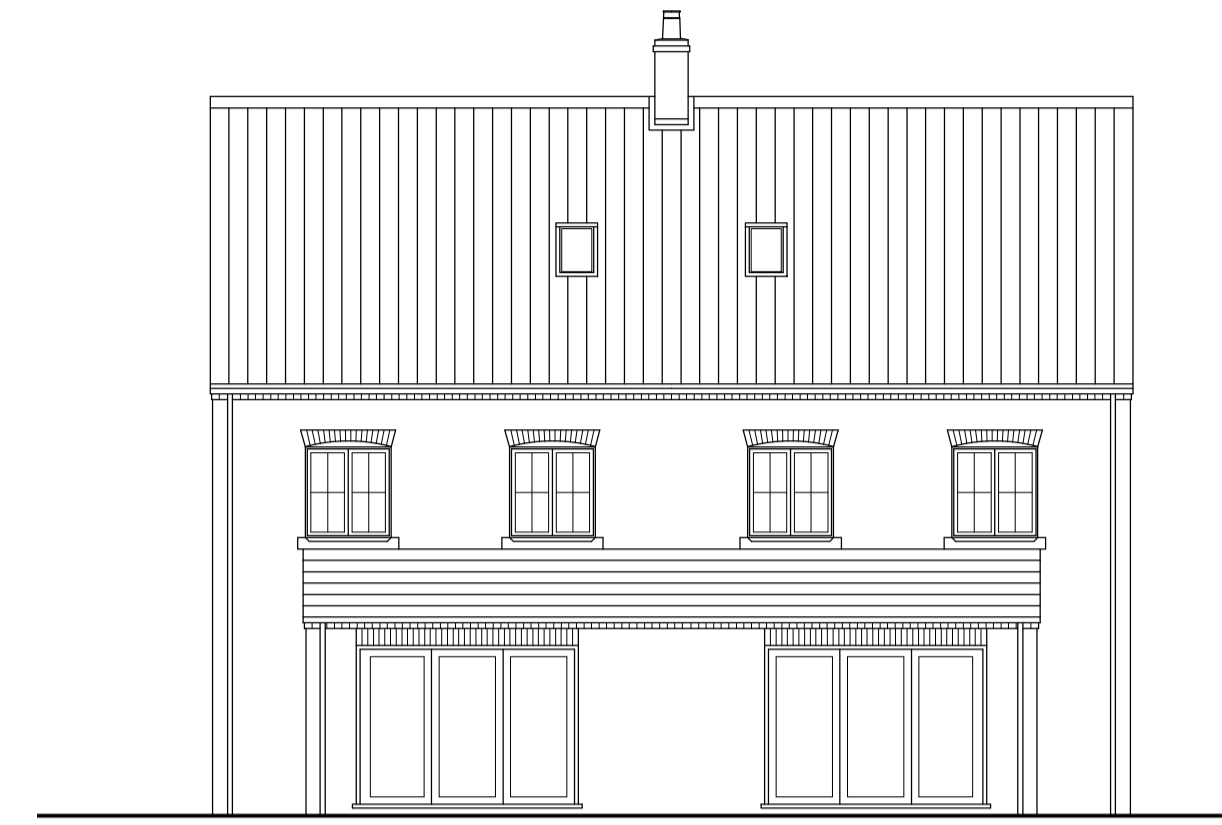
DO NOT SCALE OFF THIS DRAWING - ALL DIMENSIONS AND SETTING OUT TO BE VERIFIED ON SITE. IF IN DOUBT CONTACT THE ORIGINATOR FOR CLARIFICATION.
 THIS DRAWING IS THE PROPERTY OF FRAMEWORK. COPYRIGHT IS RESERVED BY THEM AND THE DRAWING IS ISSUED ON THE CONDITION THAT IT IS NOT COPIED, REPRODUCED, RETAINED OR DISCLOSED TO ANY UNAUTHORISED PERSON, EITHER WHOLLY OR IN PART WITHOUT THE CONSENT IN WRITING OF FRAMEWORK.



Front elevation



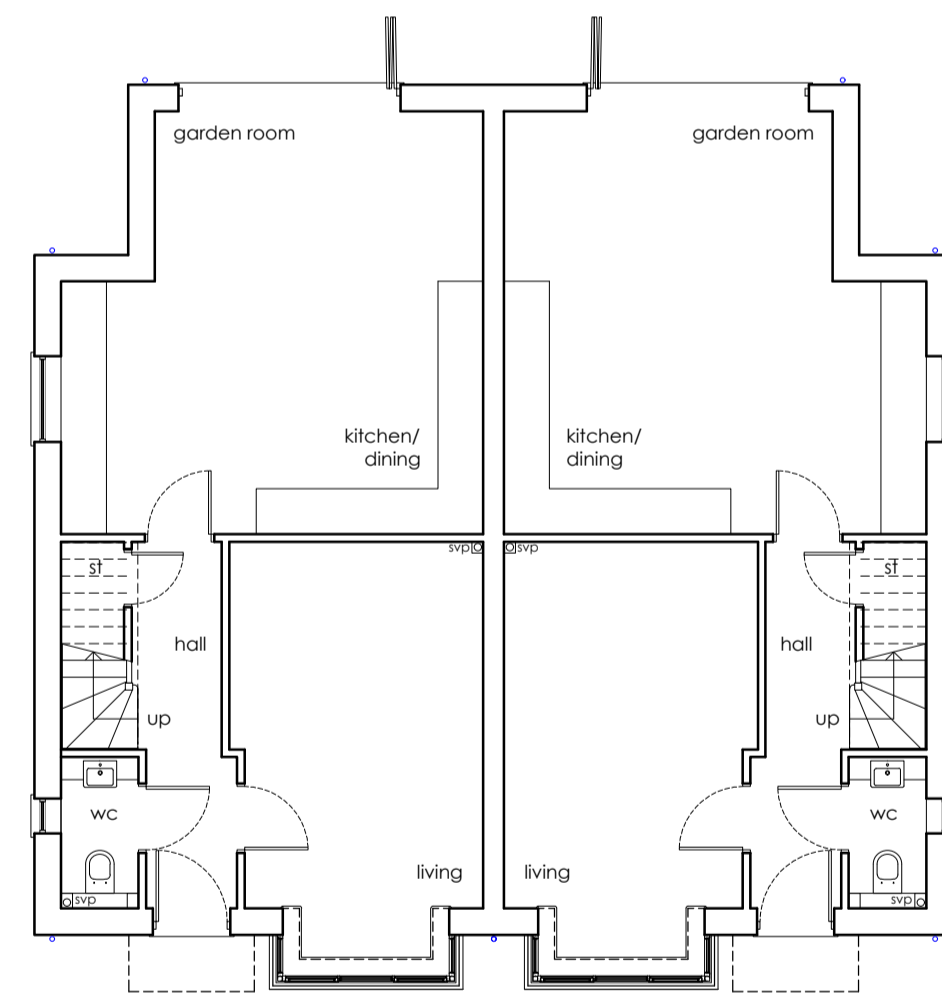
Side elevation



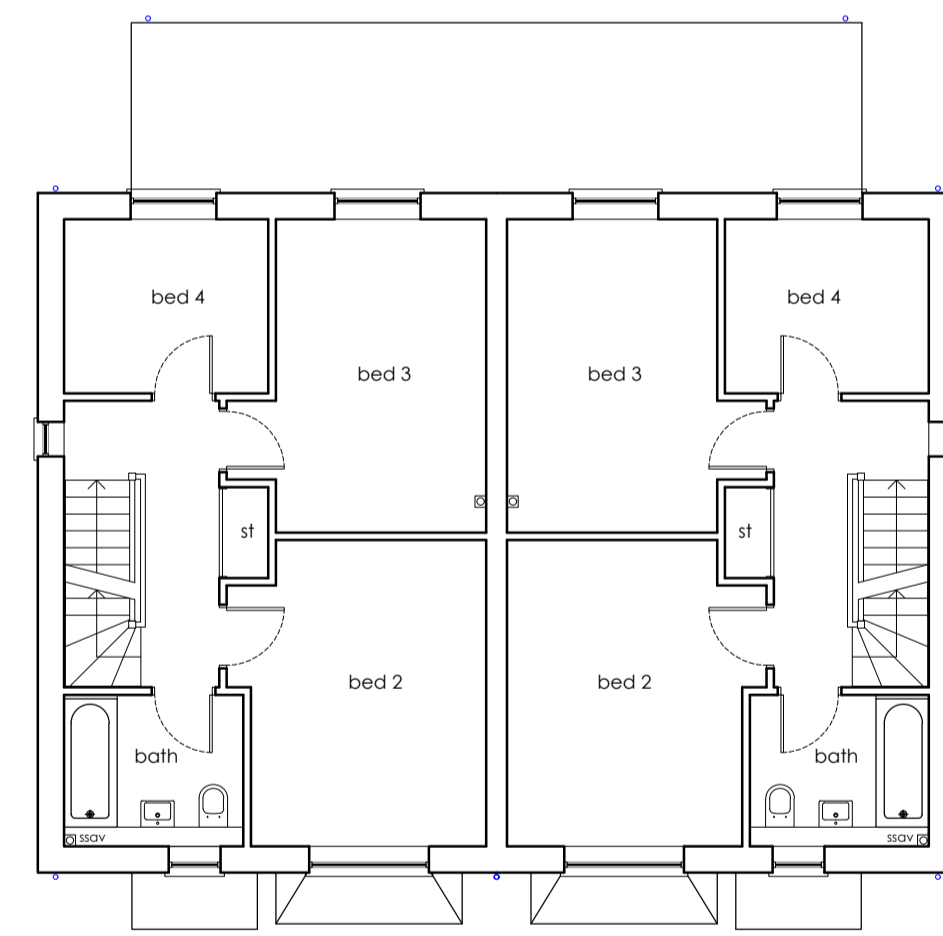
Rear elevation



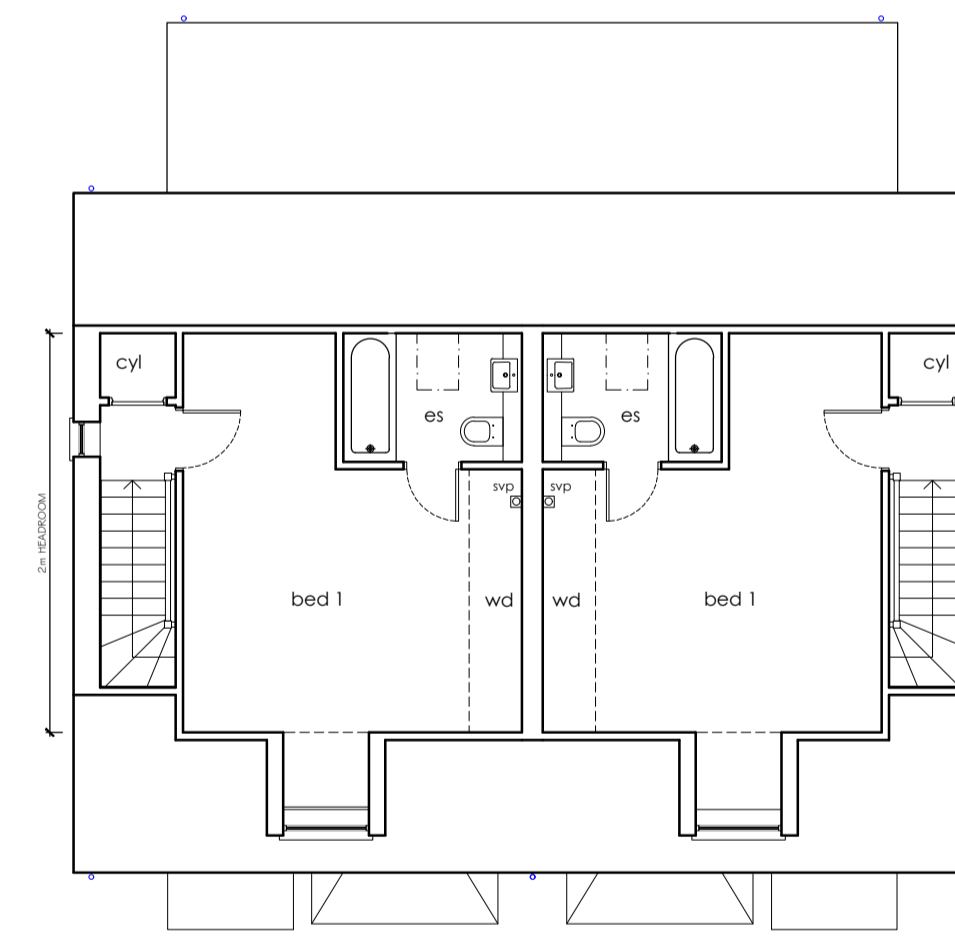
Side elevation



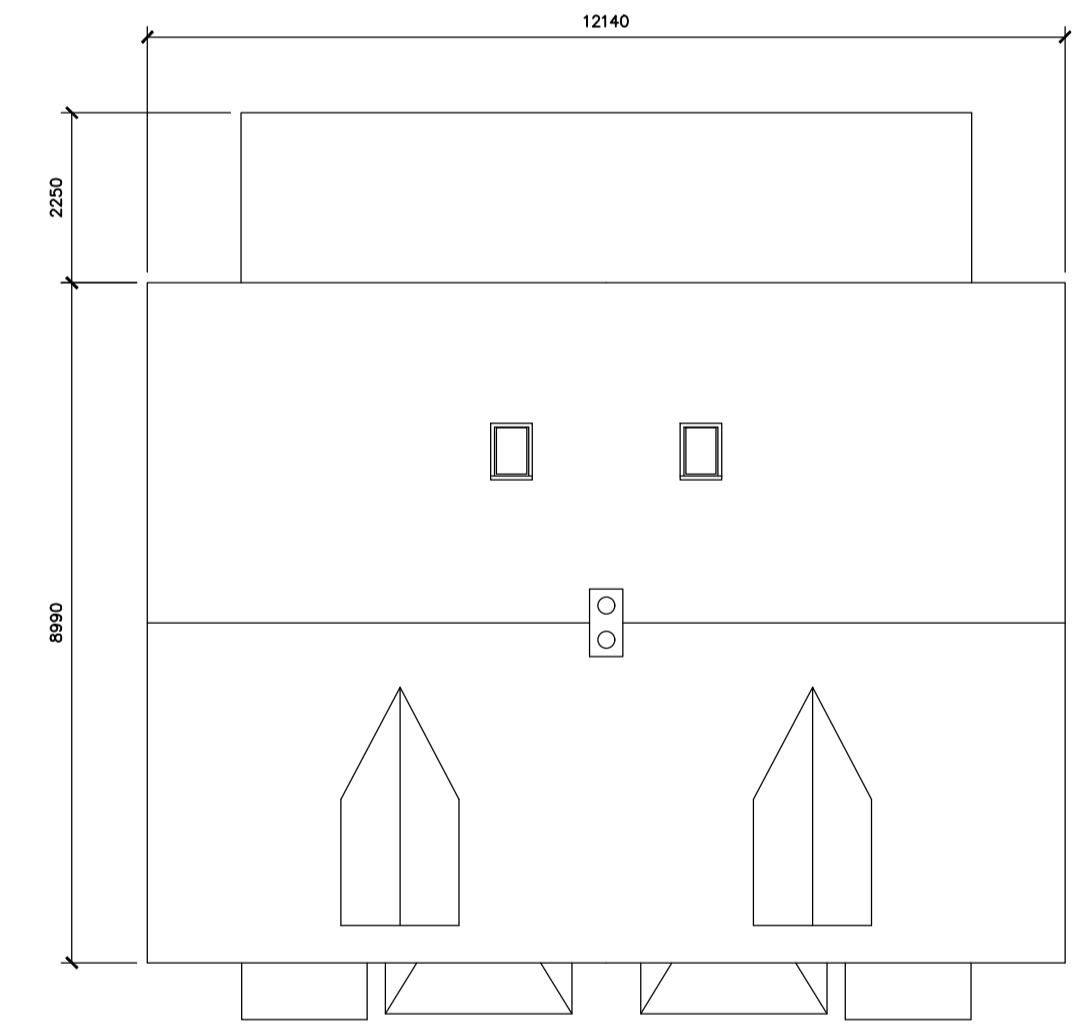
Ground floor plan
 GIFA 134.3 sq/m (1445 sq/ft)



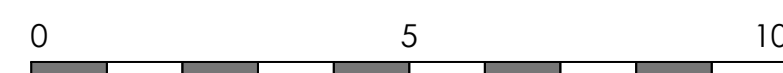
First floor plan



Second floor plan



Roof plan



PLOTS 4-5,48-49,76-77

Rev	Revision note	Date	Drawn by
A	SECTION REMOVED AND DRAWING AMENDED	15.02.24	JW
PROPOSED RESIDENTIAL DEVELOPMENT FOR STIRLIN DEVELOPMENTS LTD AT WOODBANK SKELLINGTHORPE			
Drawn by	Issue	Date	Scale
CV		NOV 23	1:100 at A1
HOUSE TYPE N4 AS/CP	Dwg No	Rev	
	J2141 00130	A	

3 MARINE STUDIOS, BURTON LANE END, BURTON WATERS, LINCOLN, LN1 2UA
 T: 01522 253381 E: info@frameworkarch.co.uk W: www.frameworkarchitects.co.uk
 Copyright © 2015 Framework All rights reserved