

DO NOT SCALE OFF THIS DRAWING - ALL DIMENSIONS AND SETTING OUT TO BE VERIFIED ON SITE. IF IN DOUBT CONTACT THE ORIGINATOR FOR CLARIFICATION.

THIS DRAWING IS THE PROPERTY OF FRAMEWORK. COPYRIGHT IS RESERVED BY THEM AND THE DRAWING IS ISSUED ON THE CONDITION THAT IT IS NOT COPIED, REPRODUCED, RETAINED OR DISCLOSED TO ANY UNAUTHORISED PERSON, EITHER WHOLLY OR IN PART WITHOUT THE CONSENT IN WRITING OF FRAMEWORK



Front elevation



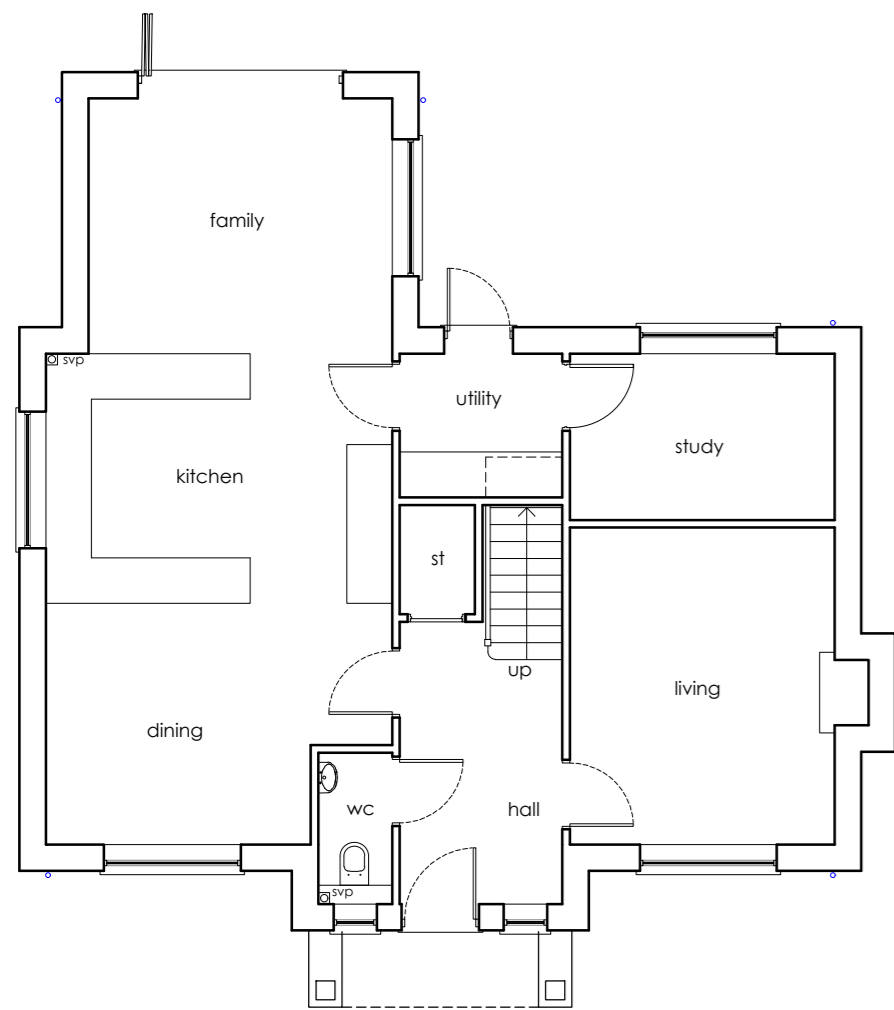
Side elevation



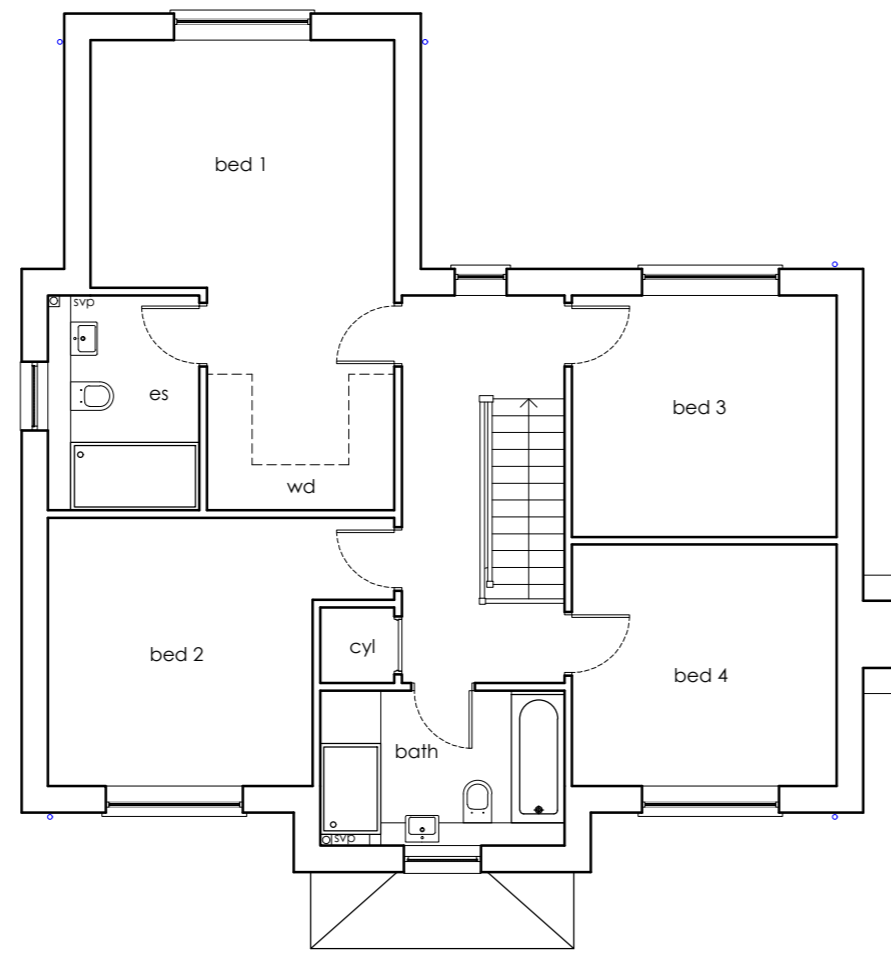
Rear elevation



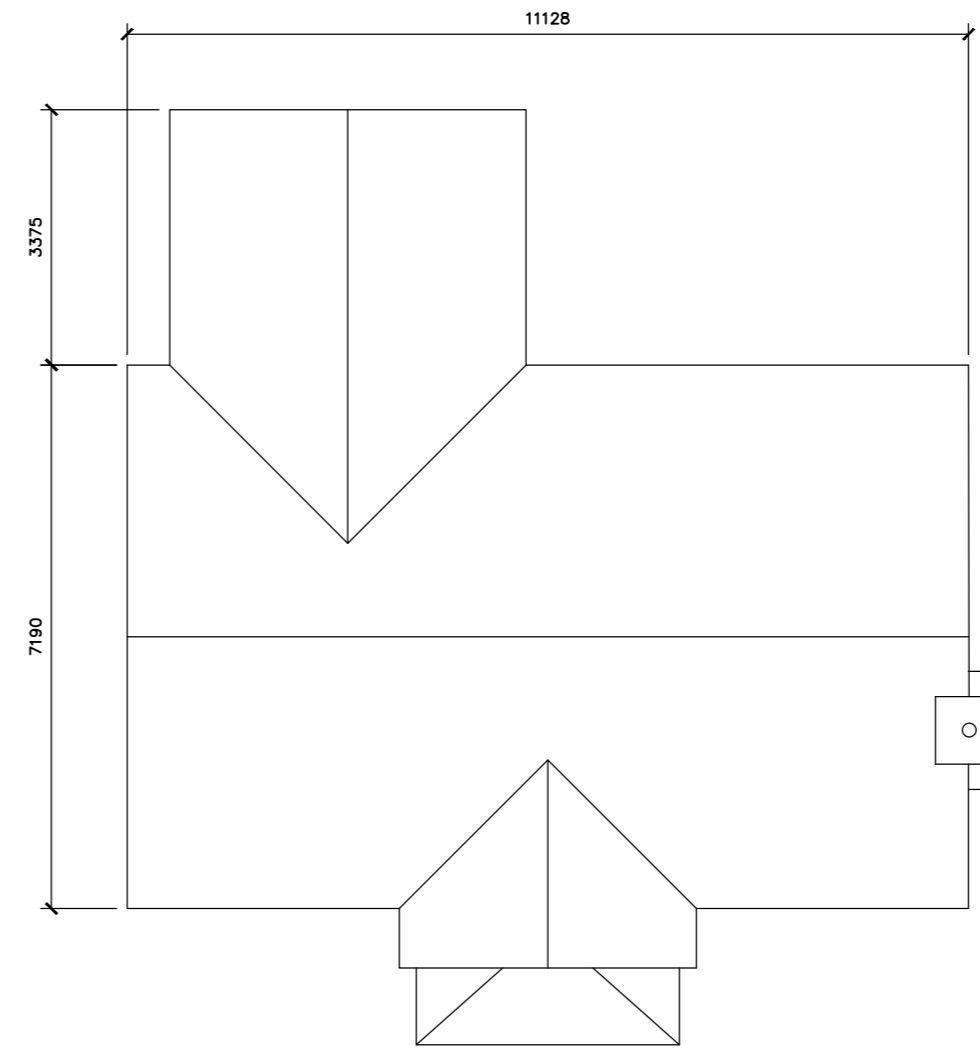
Side elevation



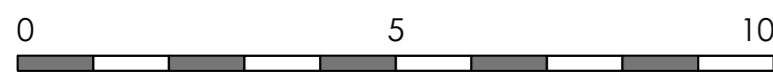
Ground floor plan
GIFA 168.5 sq/m (1813 sq/ft)



First floor plan



Roof plan



PLOTS 36,37

Rev	Revision note	Date	Drawn by
A	SECTION REMOVED AND DRAWING AMENDED	15.02.24	JW
	PROPOSED RESIDENTIAL DEVELOPMENT FOR STIRLIN DEVELOPMENTS LTD AT WOODBANK SKELLINGTHORPE		
	Drawn by CV	Issue	Date NOV 23
	HOUSE TYPE E OP	Dwg No J2141 00127	Scale 1:100 at A2
			Rev A