

DO NOT SCALE OFF THIS DRAWING - ALL DIMENSIONS AND SETTING OUT TO BE VERIFIED ON SITE. IF IN DOUBT CONTACT THE ORIGINATOR FOR CLARIFICATION.

THIS DRAWING IS THE PROPERTY OF FRAMEWORK. COPYRIGHT IS RESERVED BY THEM AND THE DRAWING IS ISSUED ON THE CONDITION THAT IT IS NOT COPIED, REPRODUCED, RETAINED OR DISCLOSED TO ANY UNAUTHORISED PERSON, EITHER WHOLLY OR IN PART WITHOUT THE CONSENT IN WRITING OF FRAMEWORK

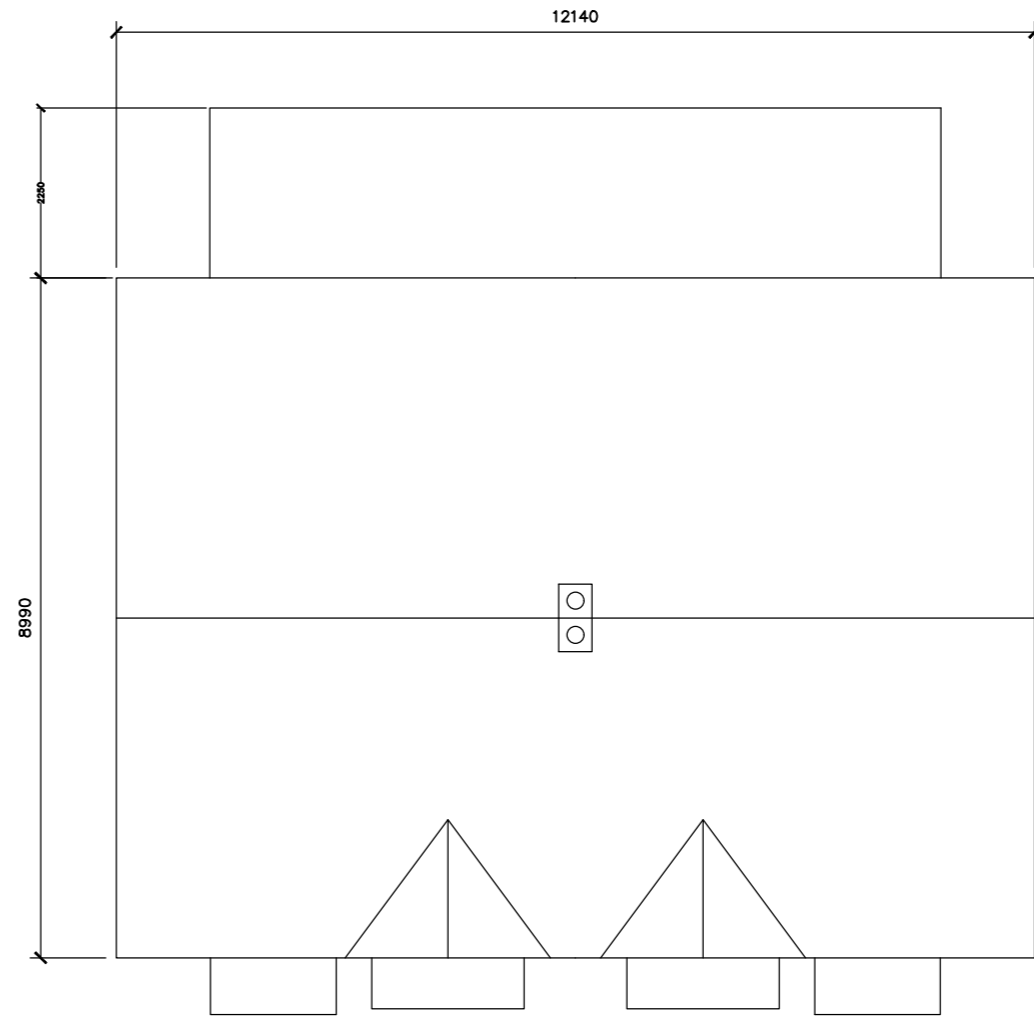
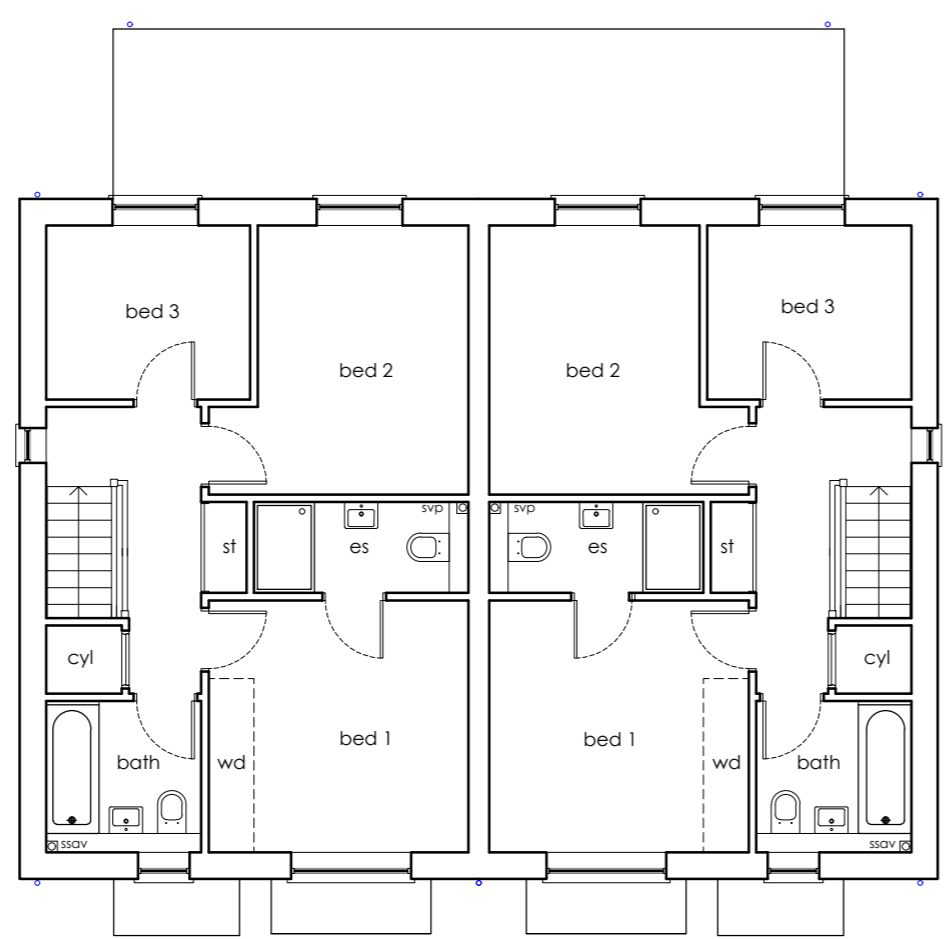
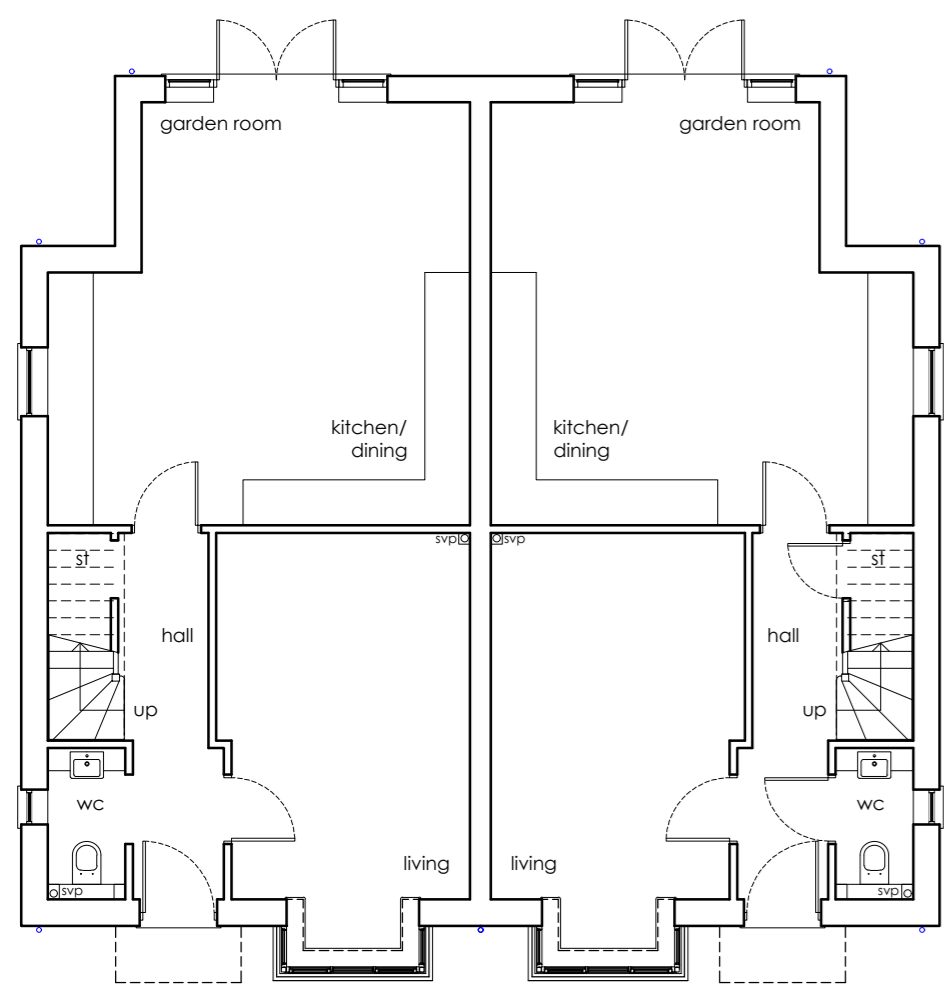


Front elevation

Side elevation

Rear elevation

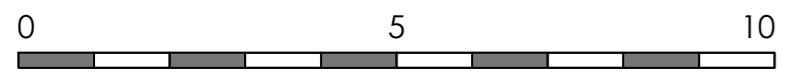
Side elevation



Ground floor plan
GIFA 103.8 sq/m (1117 sq/ft)

First floor plan

Roof plan



PLOTS 25-26,29-30,40-41

Rev	Revision note	Date	Drawn by
A	SECTION REMOVED AND DRAWING AMENDED	15.02.24	JW
<p>PROPOSED RESIDENTIAL DEVELOPMENT FOR STIRLIN DEVELOPMENTS LTD AT WOODBANK SKELLINGTHORPE</p>			
Drawn by	Issue	Date	Scale
CV		NOV 23	1:100 at A2
HOUSE TYPE B AS/OP		Dwg No	Rev
		J2141 00116	A