

DO NOT SCALE OFF THIS DRAWING - ALL DIMENSIONS AND SETTING OUT TO BE VERIFIED ON SITE. IF IN DOUBT CONTACT THE ORIGINATOR FOR CLARIFICATION.

THIS DRAWING IS THE PROPERTY OF FRAMEWORK. COPYRIGHT IS RESERVED BY THEM AND THE DRAWING IS ISSUED ON THE CONDITION THAT IT IS NOT COPIED, REPRODUCED, RETAINED OR DISCLOSED TO ANY UNAUTHORISED PERSON, EITHER WHOLLY OR IN PART WITHOUT THE CONSENT IN WRITING OF FRAMEWORK



Front elevation



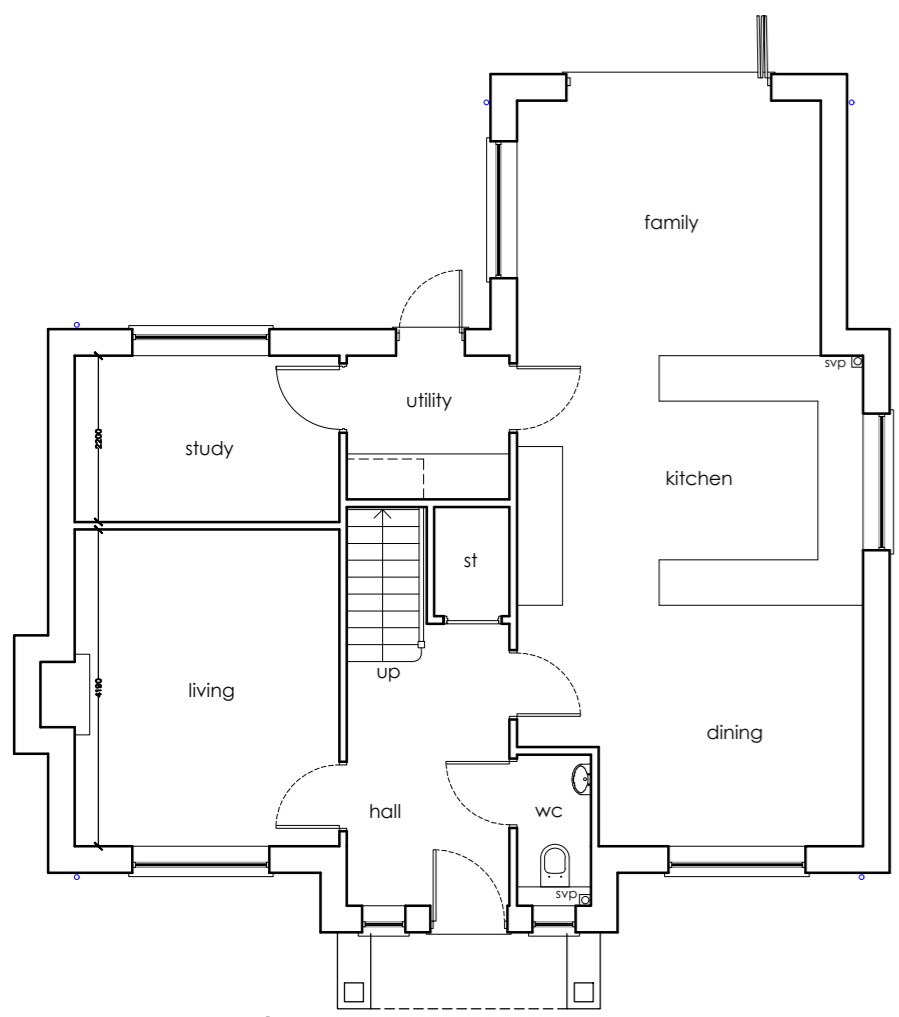
Side elevation



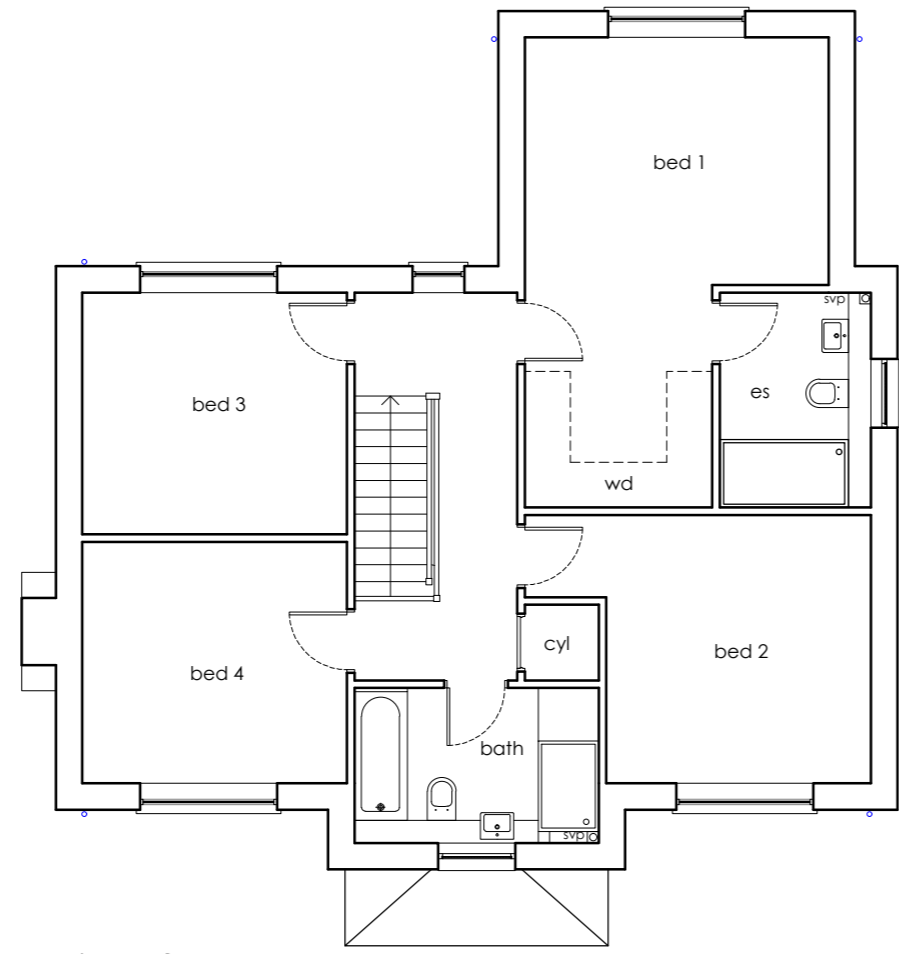
Rear elevation



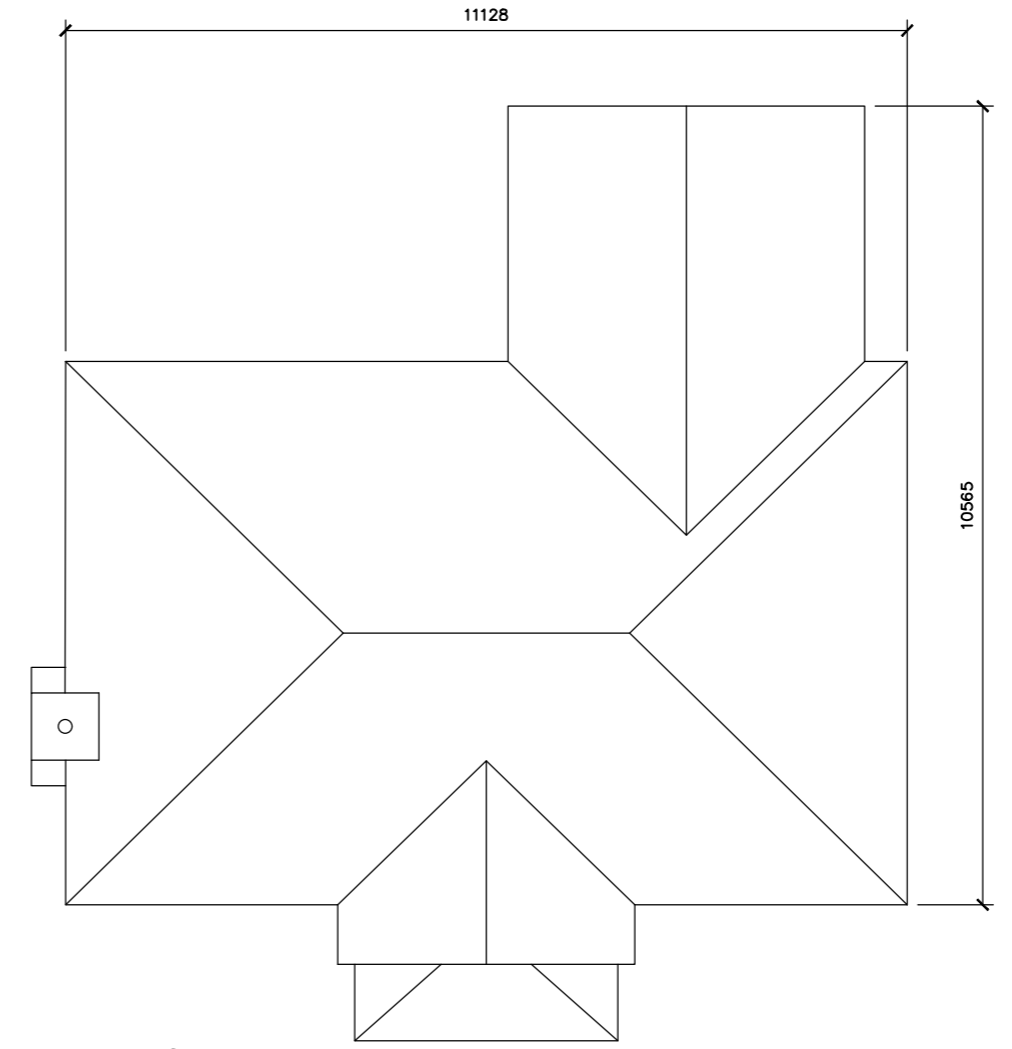
Side elevation



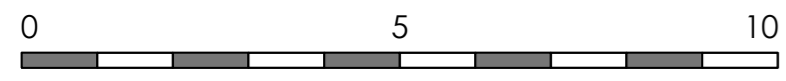
Ground floor plan
GIFA 168.5 sq/m (1813 sq/ft)



First floor plan



Roof plan



PLOT 66

B	FRONT PROJECTION REDUCED TO 40 DEGREES	21.02.24	JW
A	AMENDED ROOF AND SECTION REMOVED FROM DRAWING	15.02.24	JW
Rev	Revision note	Date	Drawn by
	PROPOSED RESIDENTIAL DEVELOPMENT FOR STIRLIN DEVELOPMENTS LTD AT WOODBANK SKELLINGTHORPE		
	Drawn by CV	Issue	Date NOV 23
	HOUSE TYPE E HIP ROOF AS	Dwg No J2141 00128	Scale 1:100 at A2
			Rev B