

DO NOT SCALE OFF THIS DRAWING - ALL DIMENSIONS AND SETTING OUT TO BE VERIFIED ON SITE. IF IN DOUBT CONTACT THE ORIGINATOR FOR CLARIFICATION.
 THIS DRAWING IS THE PROPERTY OF FRAMEWORK. COPYRIGHT IS RESERVED BY THEM AND THE DRAWING IS ISSUED ON THE CONDITION THAT IT IS NOT COPIED, REPRODUCED, RETAINED OR DISCLOSED TO ANY UNAUTHORISED PERSON, EITHER WHOLLY OR IN PART WITHOUT THE CONSENT IN WRITING OF FRAMEWORK.



Front elevation



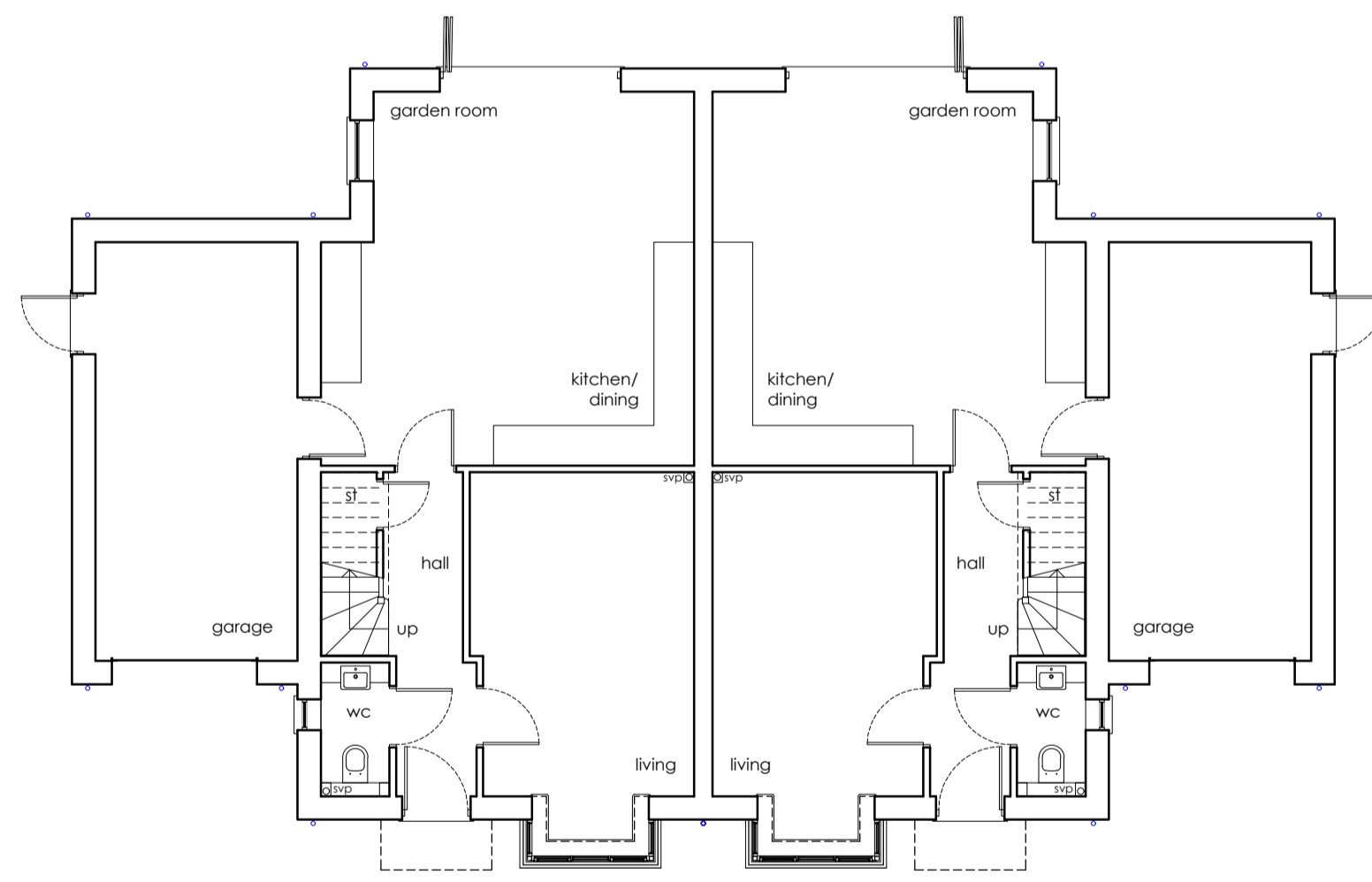
Side elevation



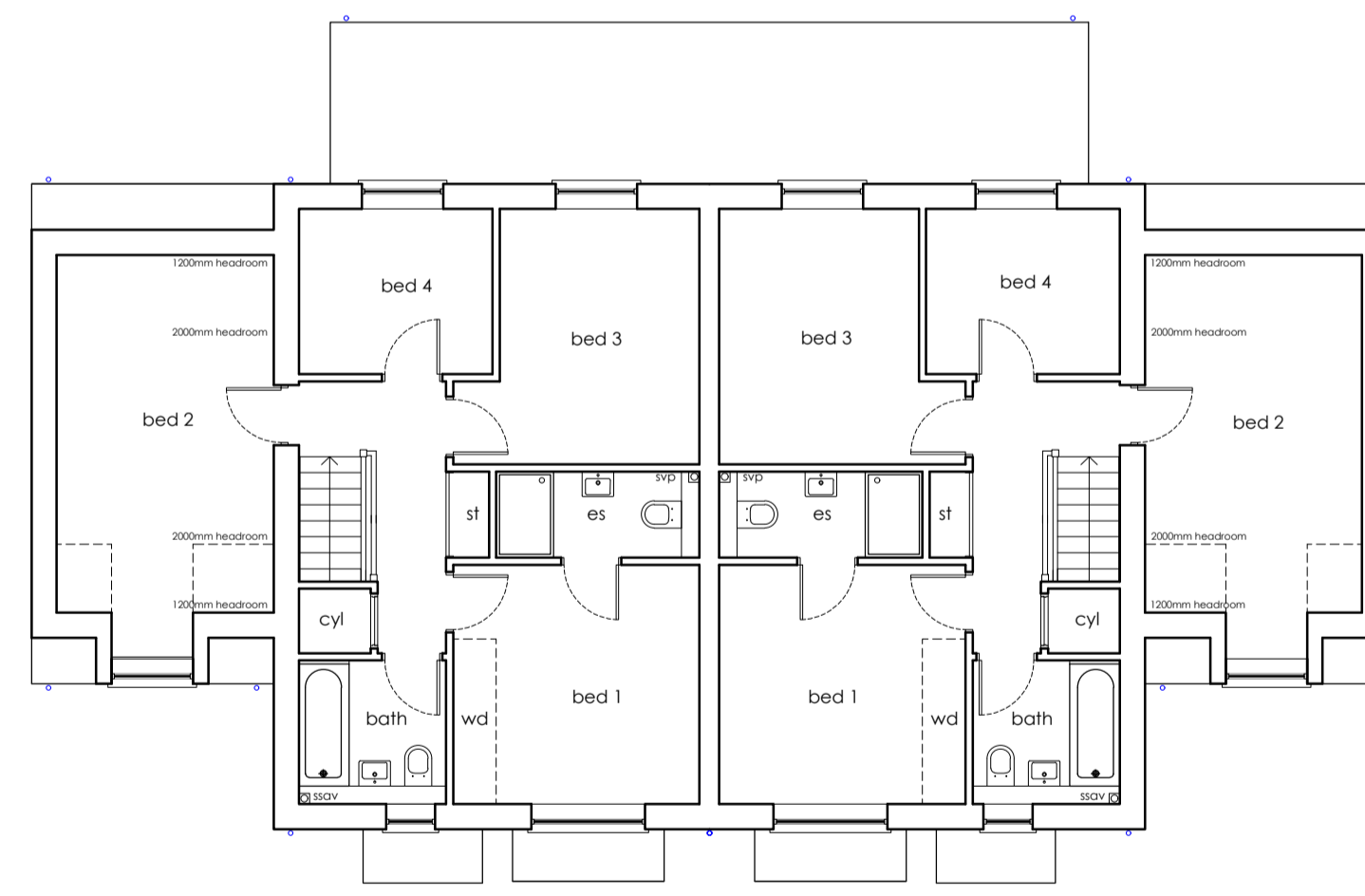
Rear elevation



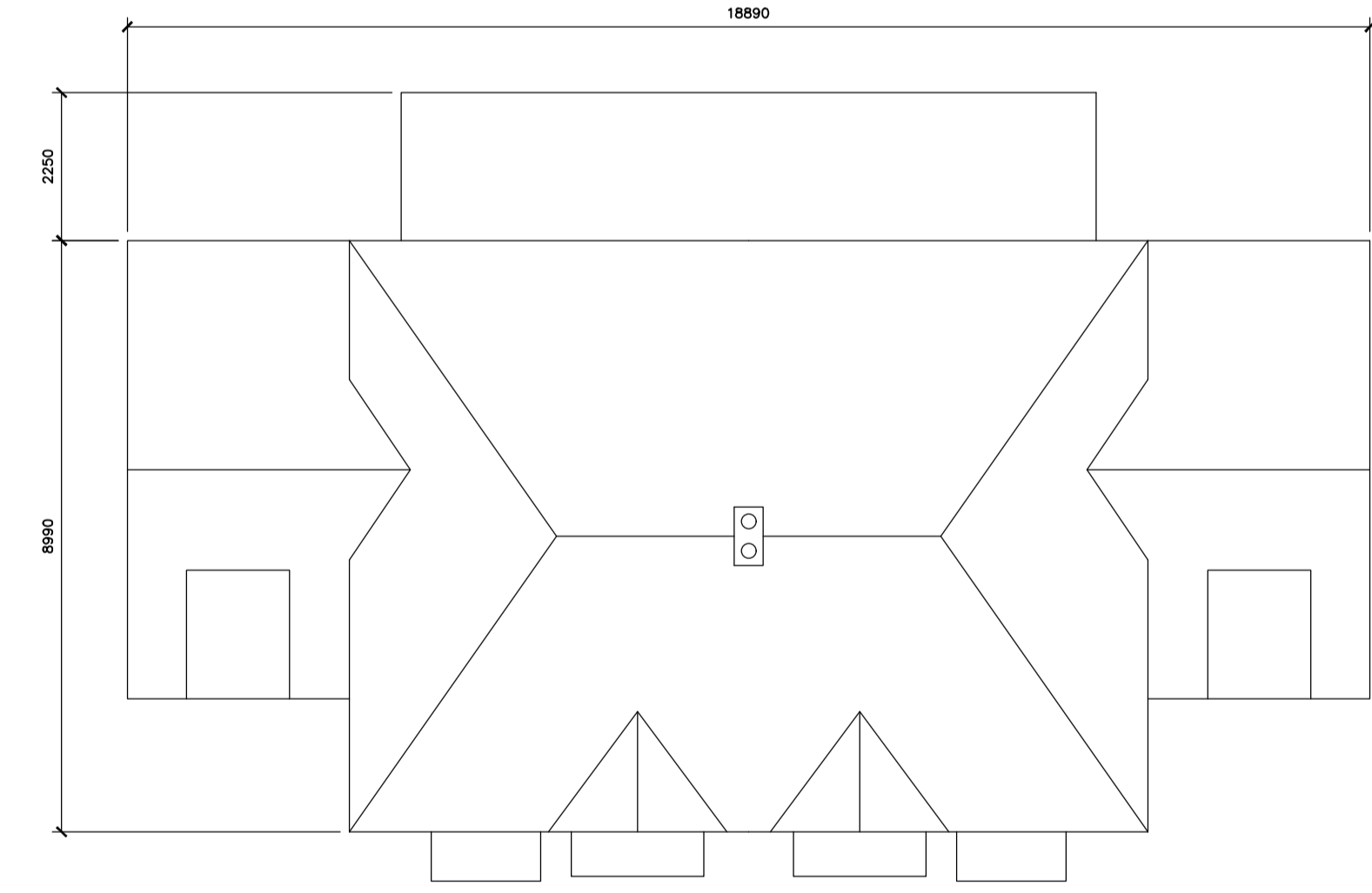
Side elevation



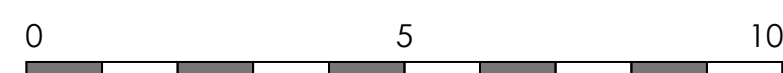
Ground floor plan
 GIFA 121.1 sq/m (1303 sq/ft)



First floor plan



Roof plan



PLOTS 27-28,38-39,44-45,61-62

Rev	Revision note	Date	Drawn by
A	SECTION REMOVED AND DRAWING AMENDED	15.02.24	JW
	PROPOSED RESIDENTIAL DEVELOPMENT FOR STIRLIN DEVELOPMENTS LTD AT WOODBANK SKELLINGHORPE		
	Drawn by CV	Issue NOV 23	Scale 1:100 at A1
	HOUSE TYPE BG AS/CP	Dwg No J2141 00121	Rev A

3 MARINE STUDIOS, BURTON LANE END, BURTON WATERS, LINCOLN, LN1 2UA
 T: 01522 233363 E: info@frameworkarchitects.co.uk W: frameworkarchitects.co.uk
 Copyright © 2015 Framework
 All rights reserved