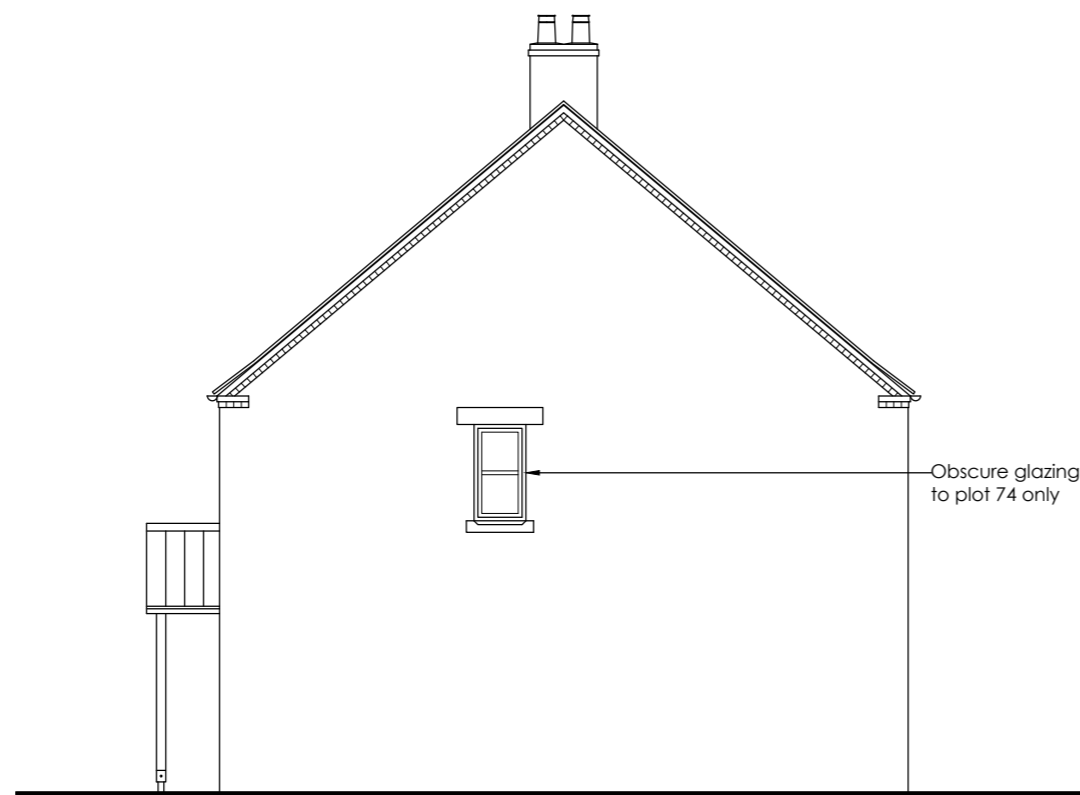


DO NOT SCALE OFF THIS DRAWING - ALL DIMENSIONS AND SETTING OUT TO BE VERIFIED ON SITE. IF IN DOUBT CONTACT THE ORIGINATOR FOR CLARIFICATION.

THIS DRAWING IS THE PROPERTY OF FRAMEWORK. COPYRIGHT IS RESERVED BY THEM AND THE DRAWING IS ISSUED ON THE CONDITION THAT IT IS NOT COPIED, REPRODUCED, RETAINED OR DISCLOSED TO ANY UNAUTHORISED PERSON, EITHER WHOLLY OR IN PART WITHOUT THE CONSENT IN WRITING OF FRAMEWORK



Front elevation

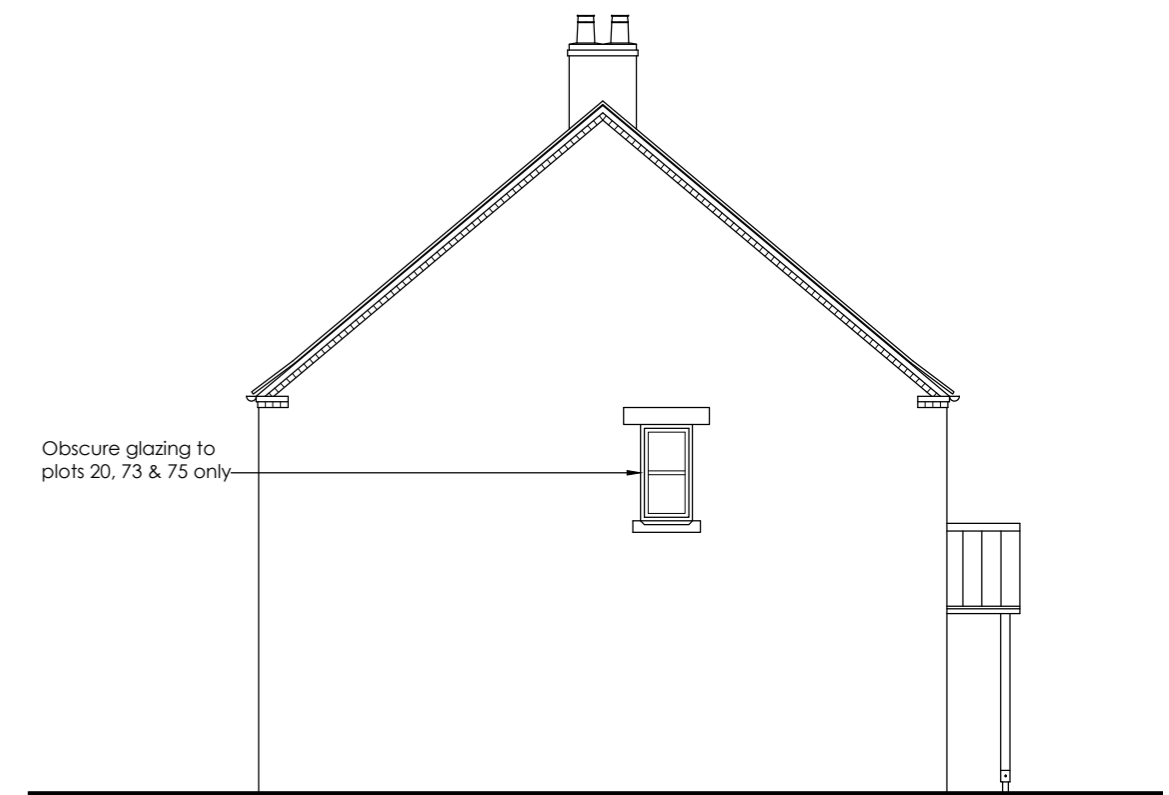


Side elevation

Obscure glazing to plot 74 only

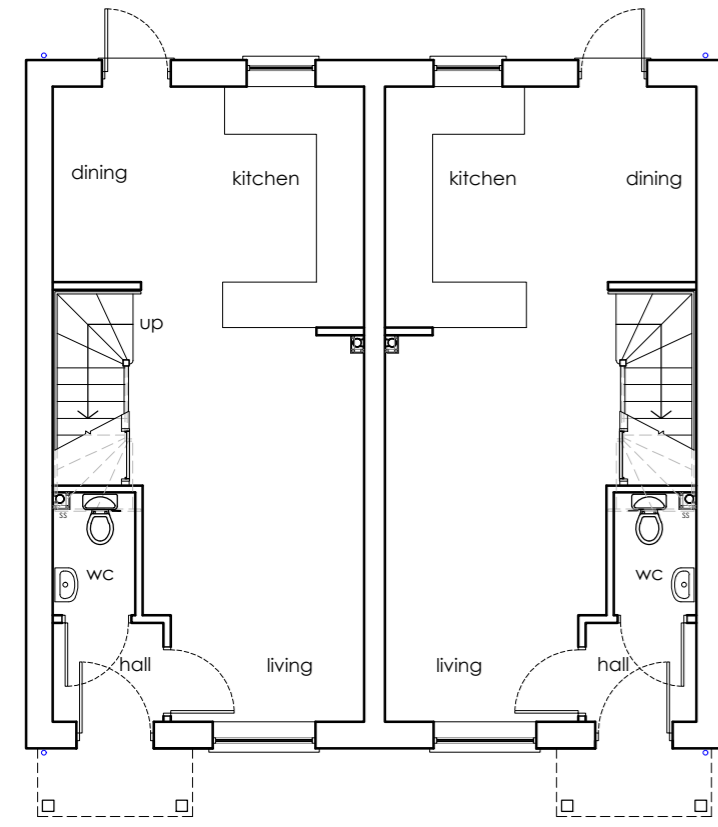


Rear elevation

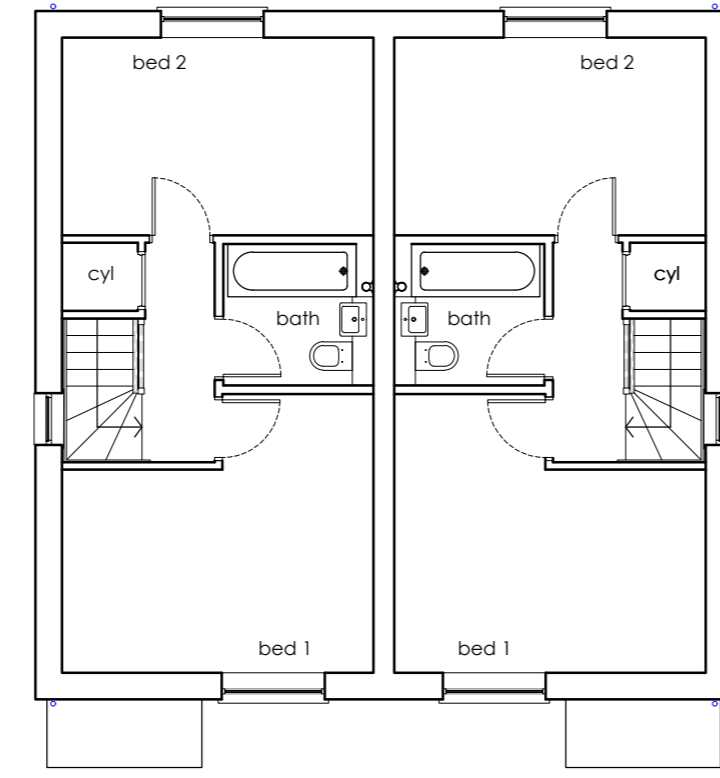


Side elevation

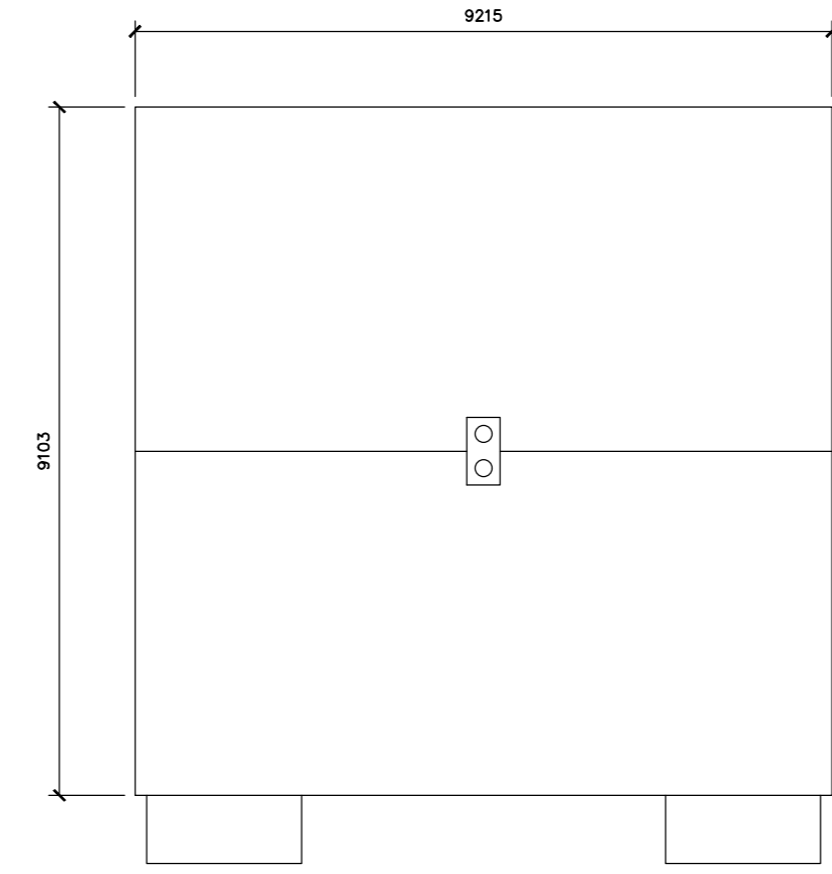
Obscure glazing to plots 20, 73 & 75 only



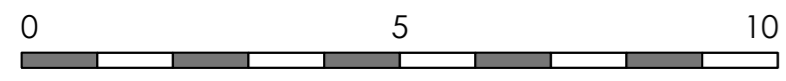
Ground floor plan  
GIFA 69.5 sq/m (748 sq/ft)



First floor plan



Roof plan



# PLOTS 12-13,19-20,72-73,74-75

| Rev   | Revision note                       | Date        | Drawn by    |
|---|-------------------------------------|-------------|-------------|
| A   | SECTION REMOVED AND DRAWING AMENDED | 15.02.24    | JW          |
| <p>PROPOSED RESIDENTIAL DEVELOPMENT FOR STIRLIN DEVELOPMENTS LTD<br/>AT WOODBANK<br/>SKELLINGTHORPE</p> |                                     |             |             |
| Drawn by  | Issue                               | Date        | Scale       |
| CV  |                                     | NOV 23      | 1:100 at A2 |
| HOUSE TYPE N2 AS/OP   |                                     | Dwg No      | Rev         |
|   |                                     | J2141 00129 | A           |