



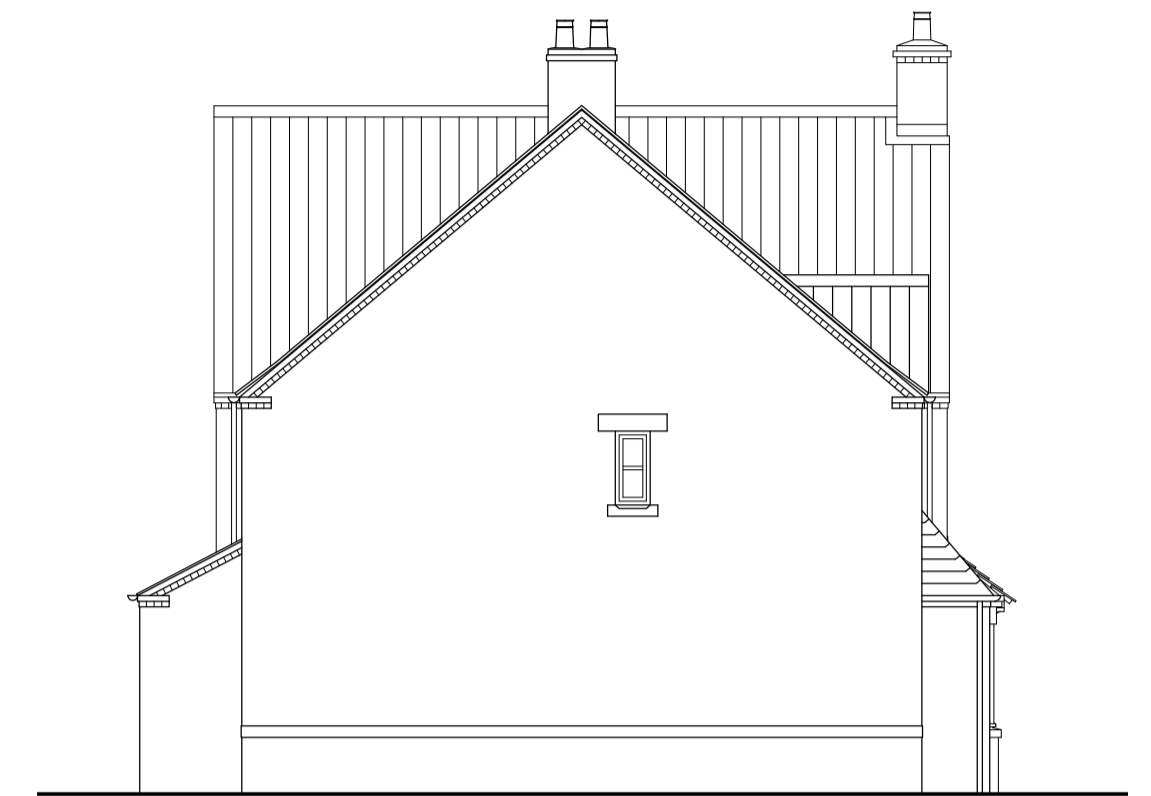
Front elevation



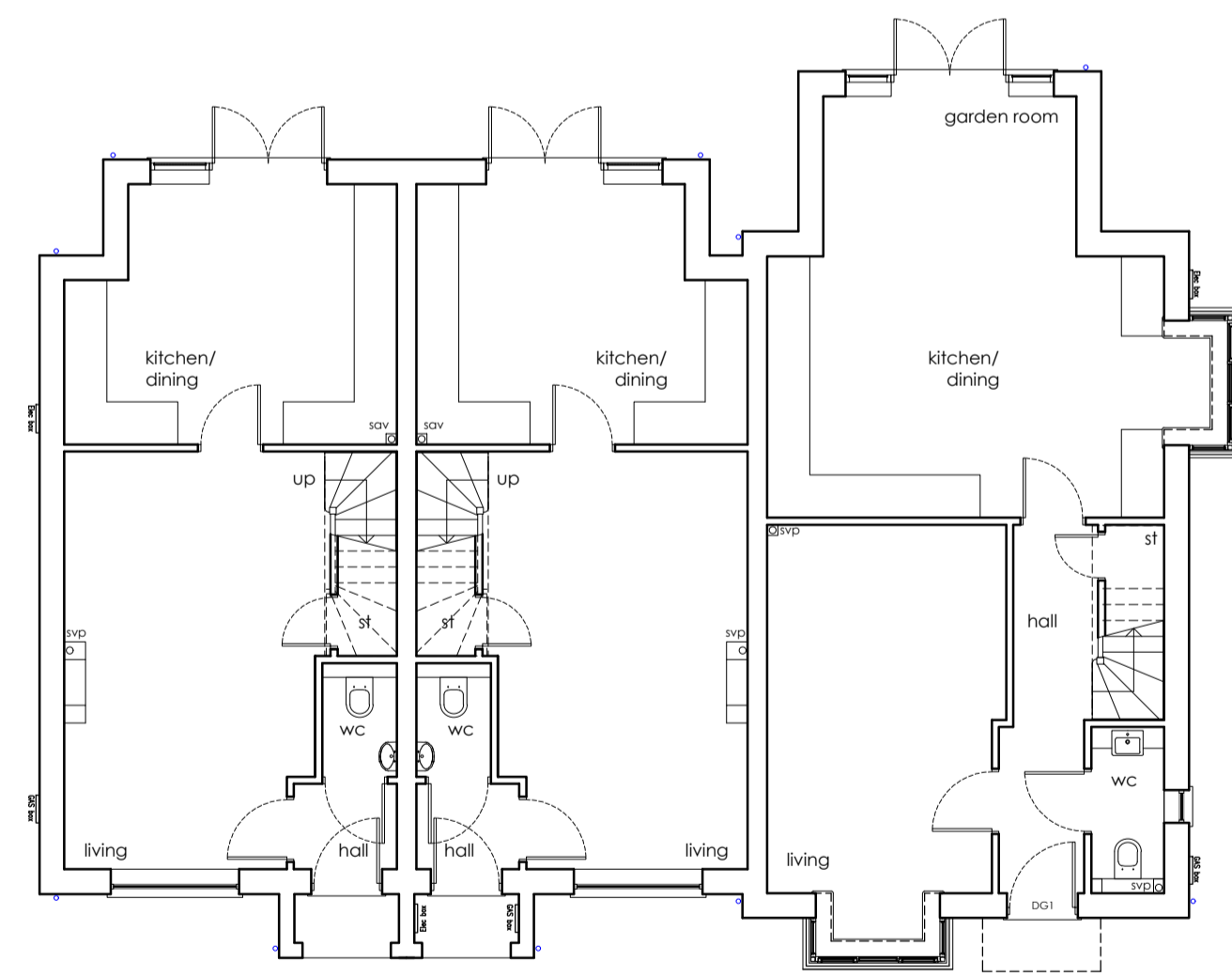
Side elevation



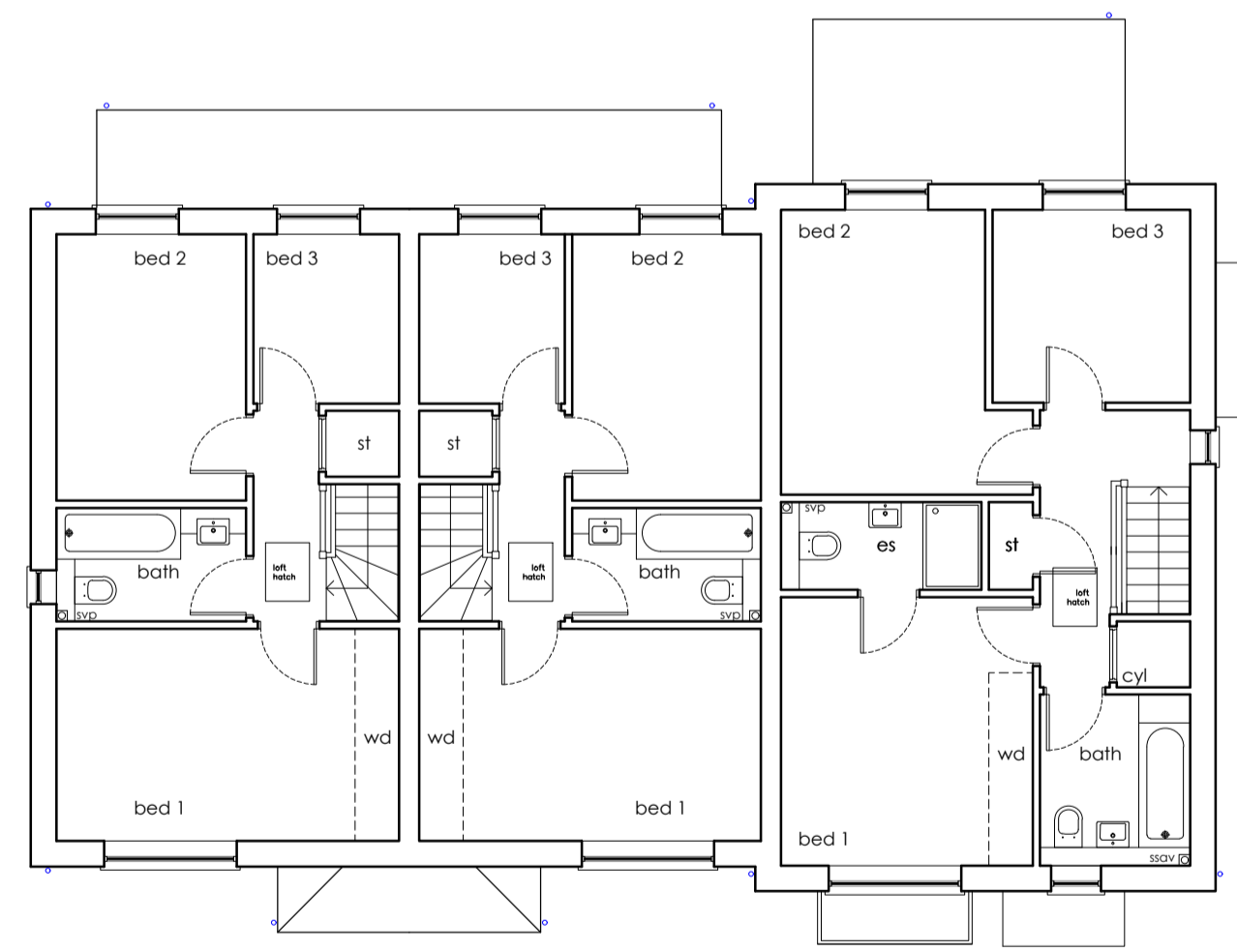
Rear elevation



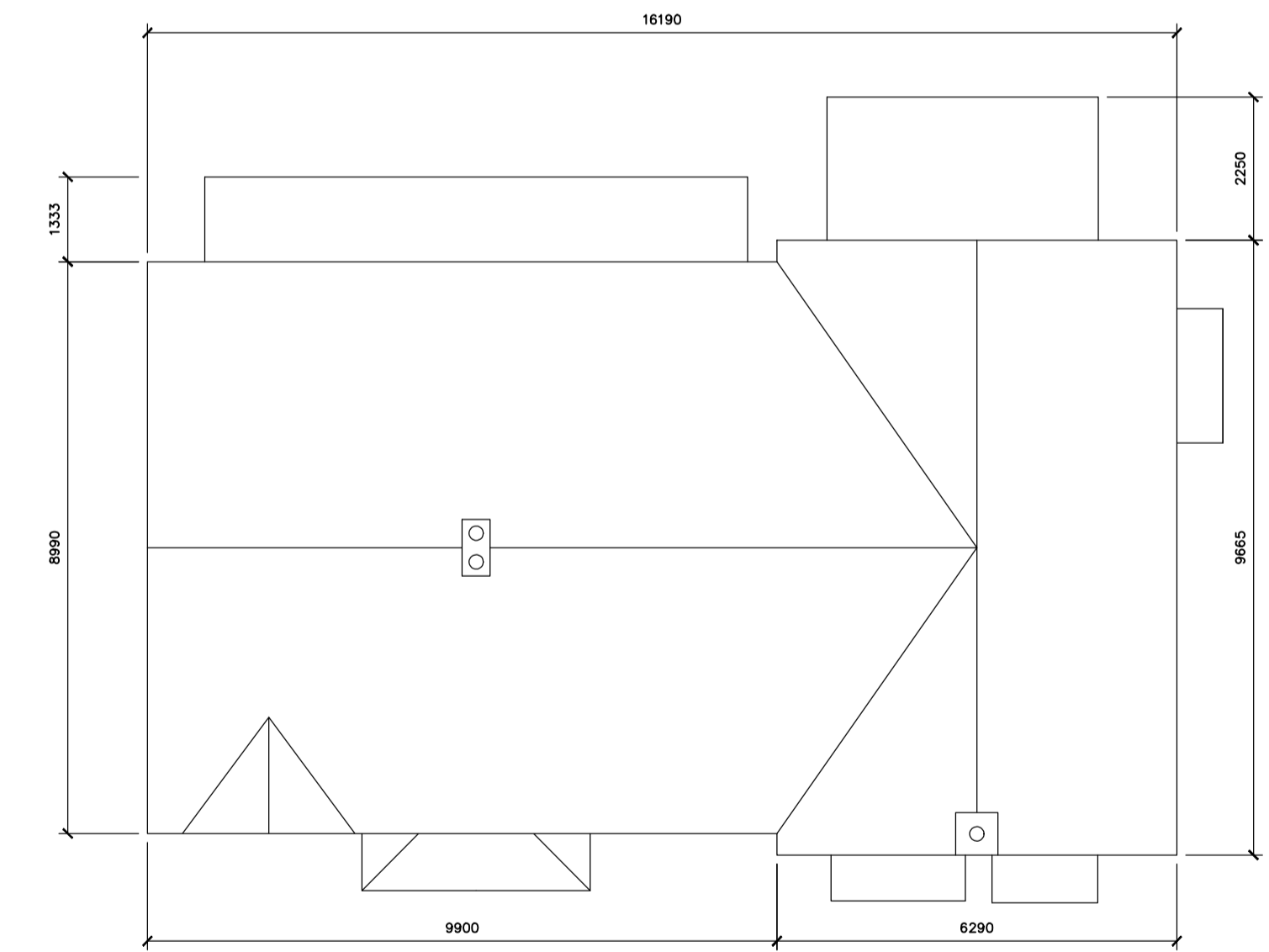
Side elevation



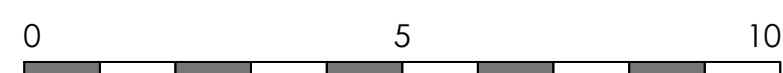
Ground floor plan
 Type A GIFA 83.3 sq/m (896 sq/ft)
 Type B GIFA 110.59 sq/m (1190 sq/ft)



First floor plan



Roof plan



PLOTS 67-68-69

Rev	Revision note	Date	Drawn by
A	AMENDED GFA	23.02.24	JW
PROPOSED RESIDENTIAL DEVELOPMENT FOR STIRLIN DEVELOPMENTS LTD AT WOODBANK SKELLINGTHORPE			
Drawn by	Issue	Date	Scale
JW	HOUSE TYPE A&B OP (WITH BAY)	FEB 24	1:100 at A1
Dwg No	Rev		
J2141 00136	A		

Framework Architects
 3 MARINE STUDIOS, BURTON LANE END, BURTON WATERS, LINCOLN, LN1 2UA
 T: 01522 263381 E: info@frameworkarch.co.uk W: www.frameworkarchitects.co.uk
 Copyright © 2015 Framework All rights reserved