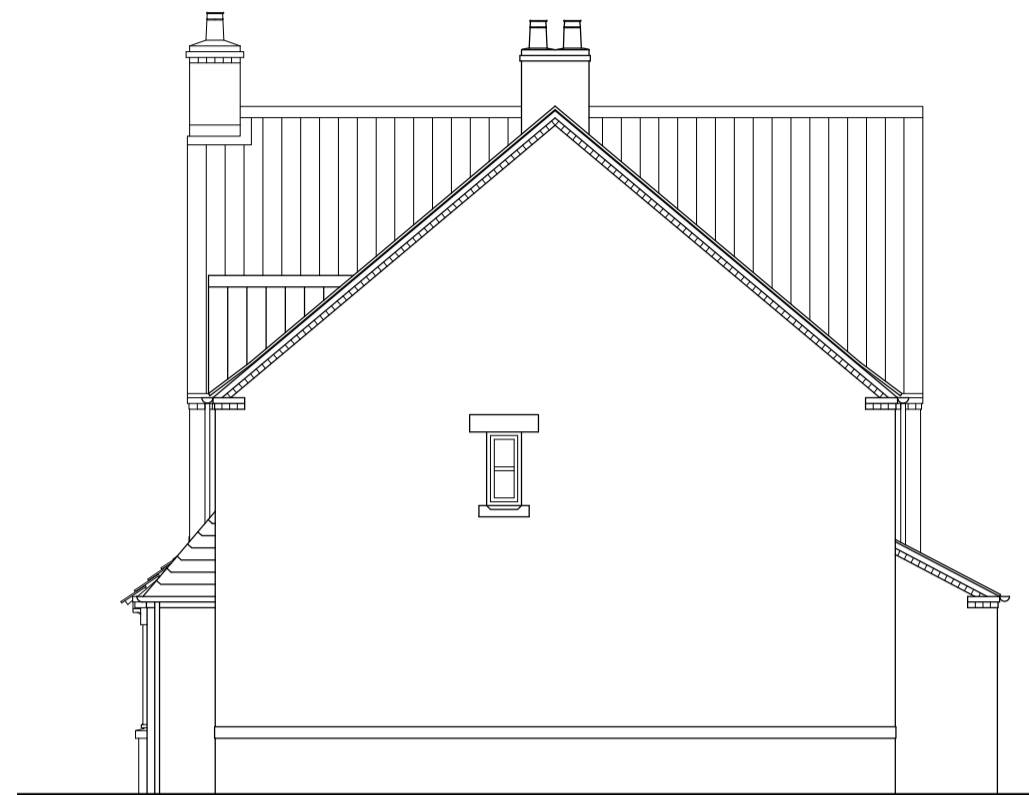


DO NOT SCALE OFF THIS DRAWING - ALL DIMENSIONS AND SETTING OUT TO BE VERIFIED ON SITE. IF IN DOUBT CONTACT THE ORIGINATOR FOR CLARIFICATION.
 THIS DRAWING IS THE PROPERTY OF FRAMEWORK. COPYRIGHT IS RESERVED BY THEM AND THE DRAWING IS ISSUED ON THE CONDITION THAT IT IS NOT COPIED, REPRODUCED, RETAINED OR DISCLOSED TO ANY UNAUTHORISED PERSON, EITHER WHOLLY OR IN PART WITHOUT THE CONSENT IN WRITING OF FRAMEWORK.



Front elevation



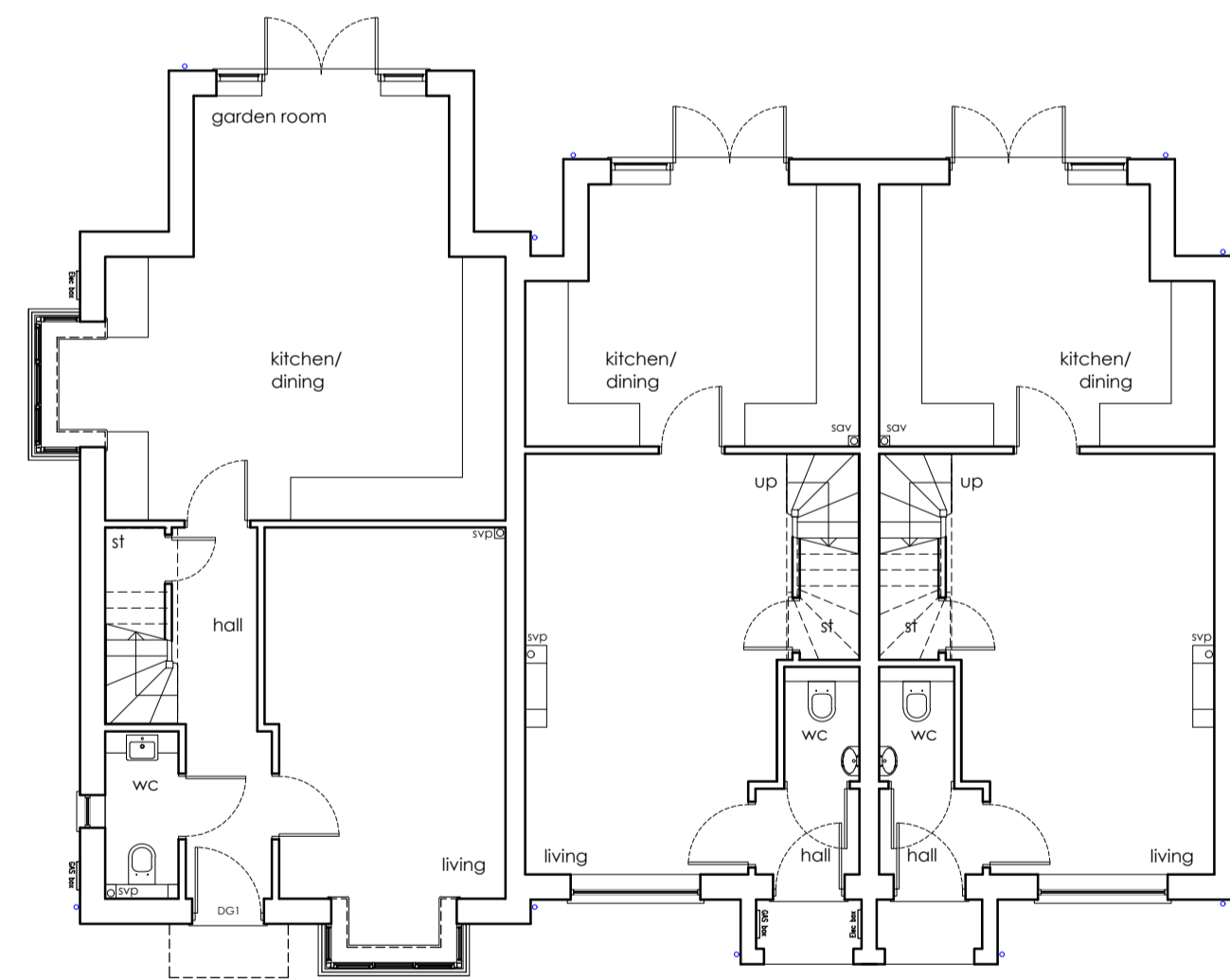
Side elevation



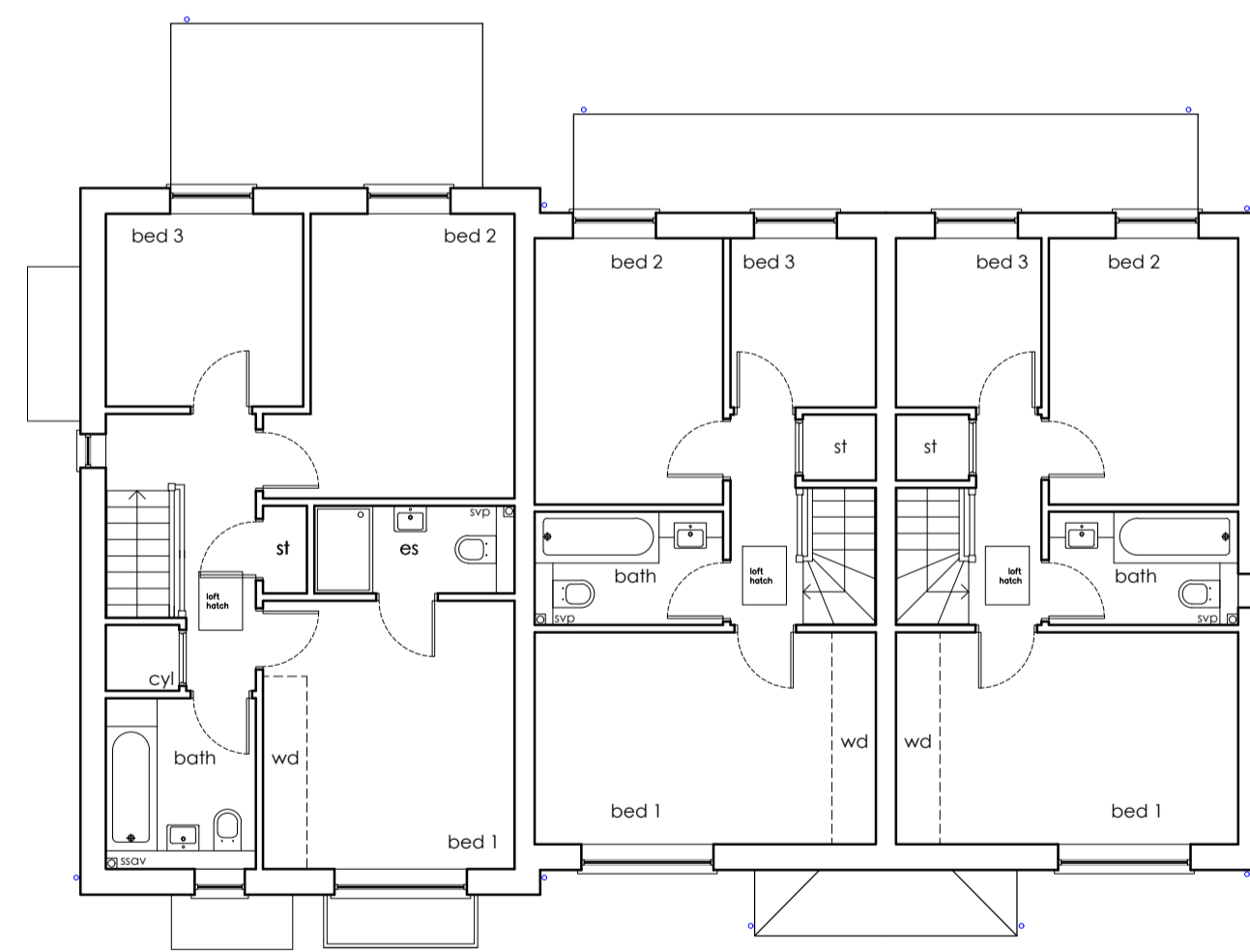
Rear elevation



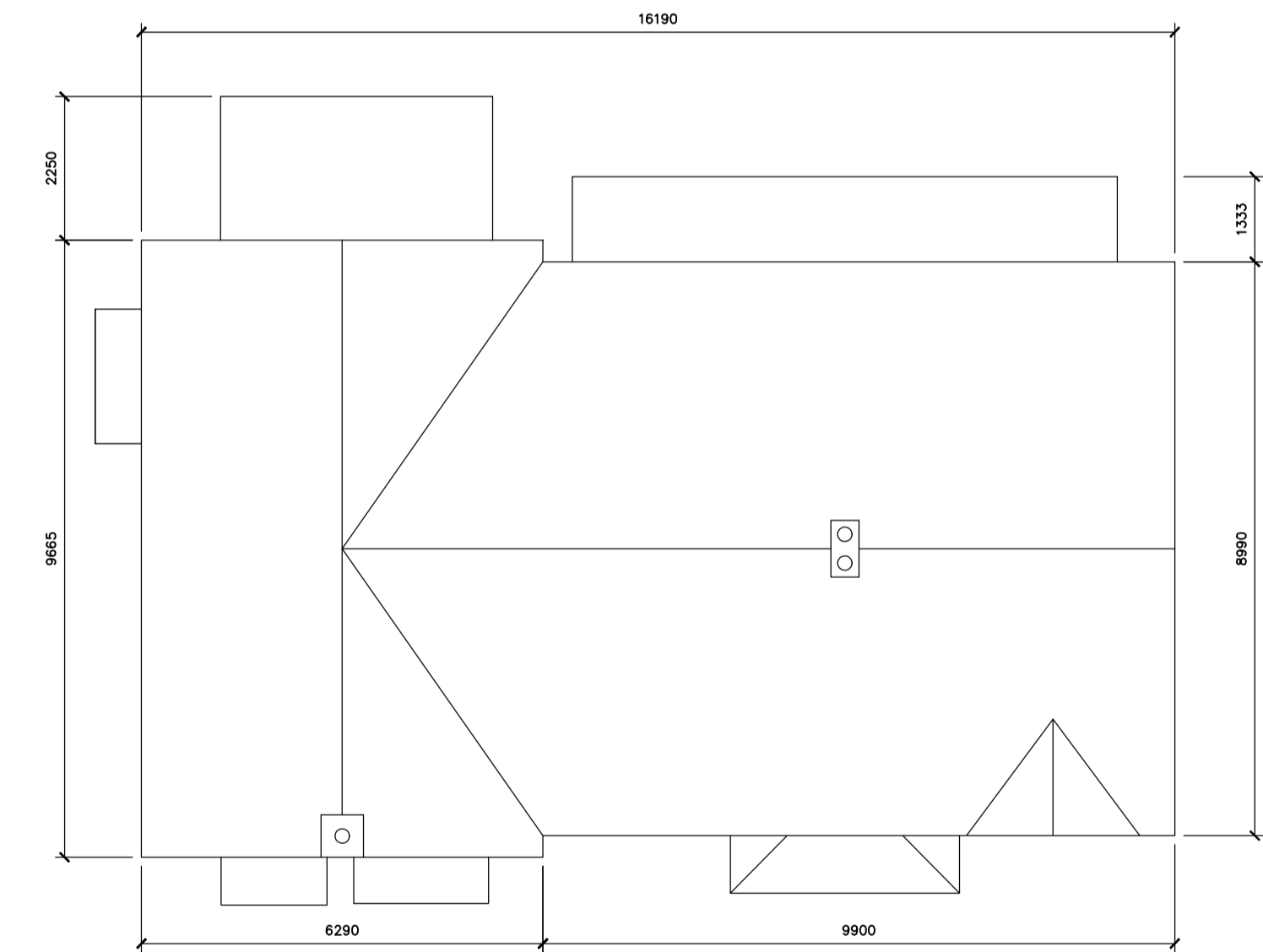
Side elevation



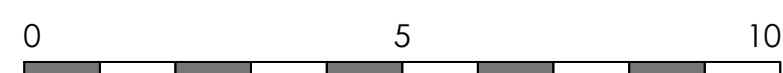
Ground floor plan
 Type A GIFA 83.3 sq/m (89% sq/ft)
 Type B GIFA 110.59 sq/m (1190 sq/ft)



First floor plan



Roof plan



PLOTS 85-86-87

Rev	Revision note	Date	Drawn by
A	AMENDED GFA	23.02.24	JW
PROPOSED RESIDENTIAL DEVELOPMENT FOR STIRLIN DEVELOPMENTS LTD AT WOODBANK SKELLINGTHORPE			
Drawn by	Issue	Date	Scale
JW	HOUSE TYPE AAB AS (WITH BAY)	FEB 24	1:100 at A1
Dwg No	Rev		
J2141 00135	A		

3 MARINE STUDIOS, BURTON LANE END, BURTON WATERS, LINCOLN, LN1 2UA
 T: 01522 263383 E: info@frameworkarch.co.uk W: www.frameworkarchitects.co.uk
 Copyright © 2015 Framework
 All rights reserved