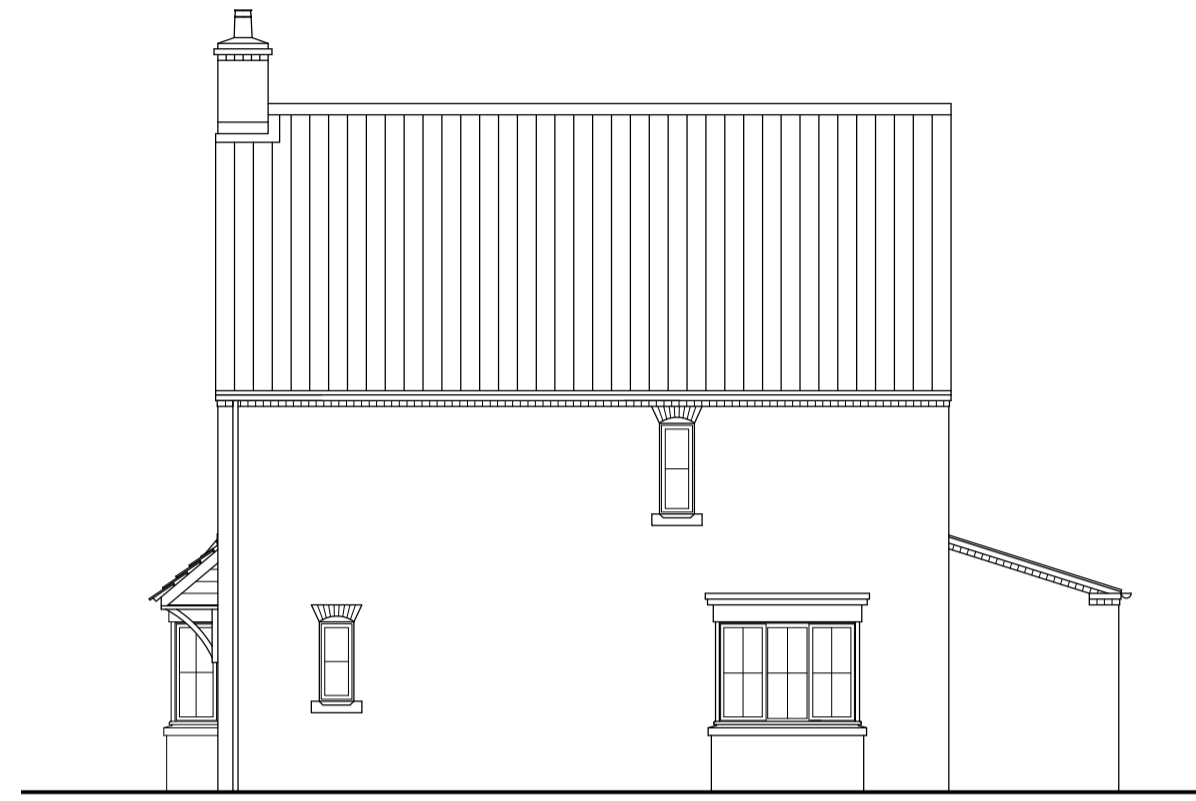




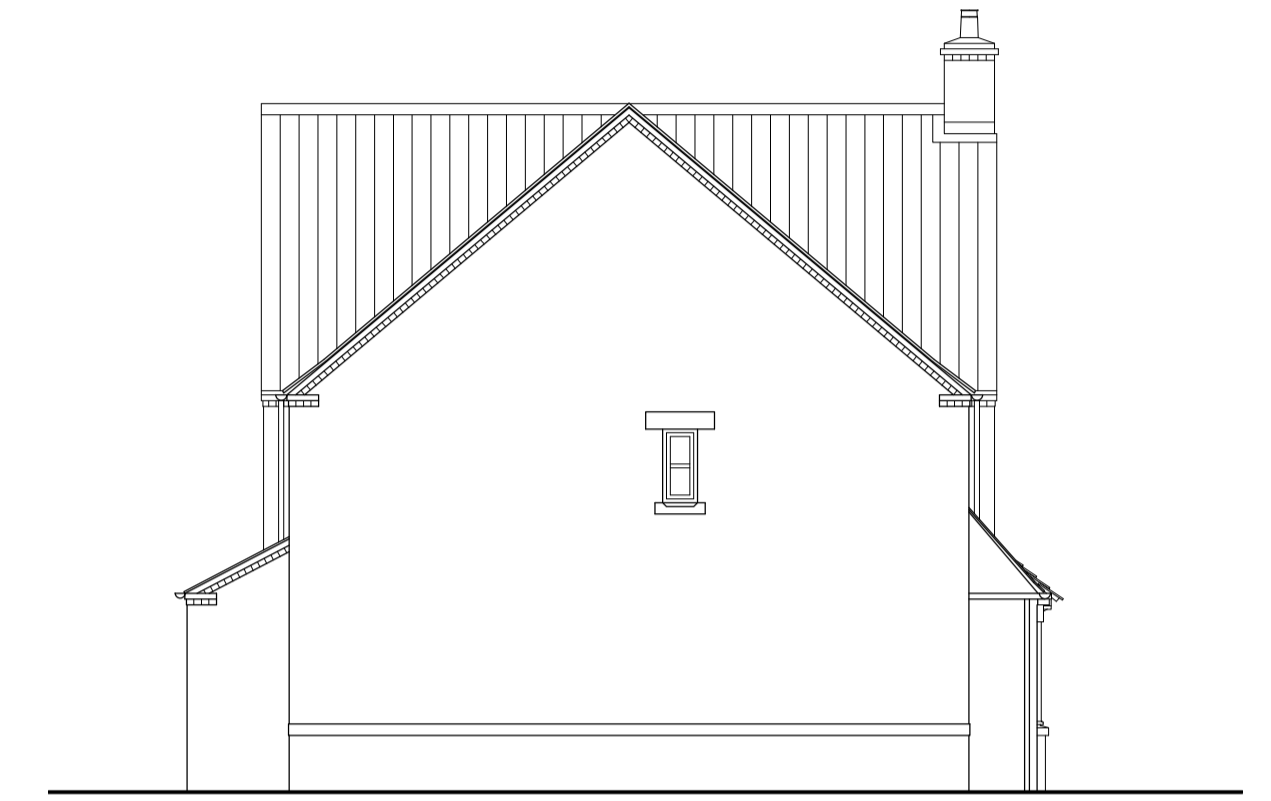
Front elevation



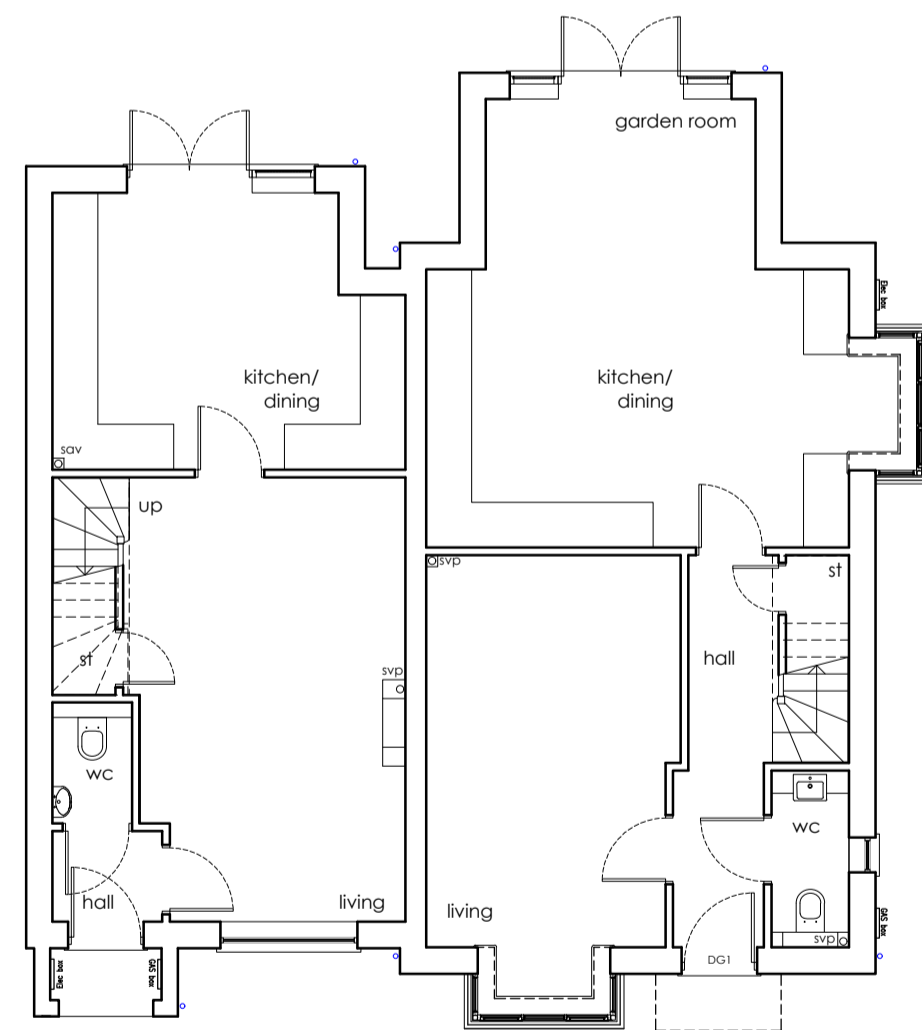
Side elevation



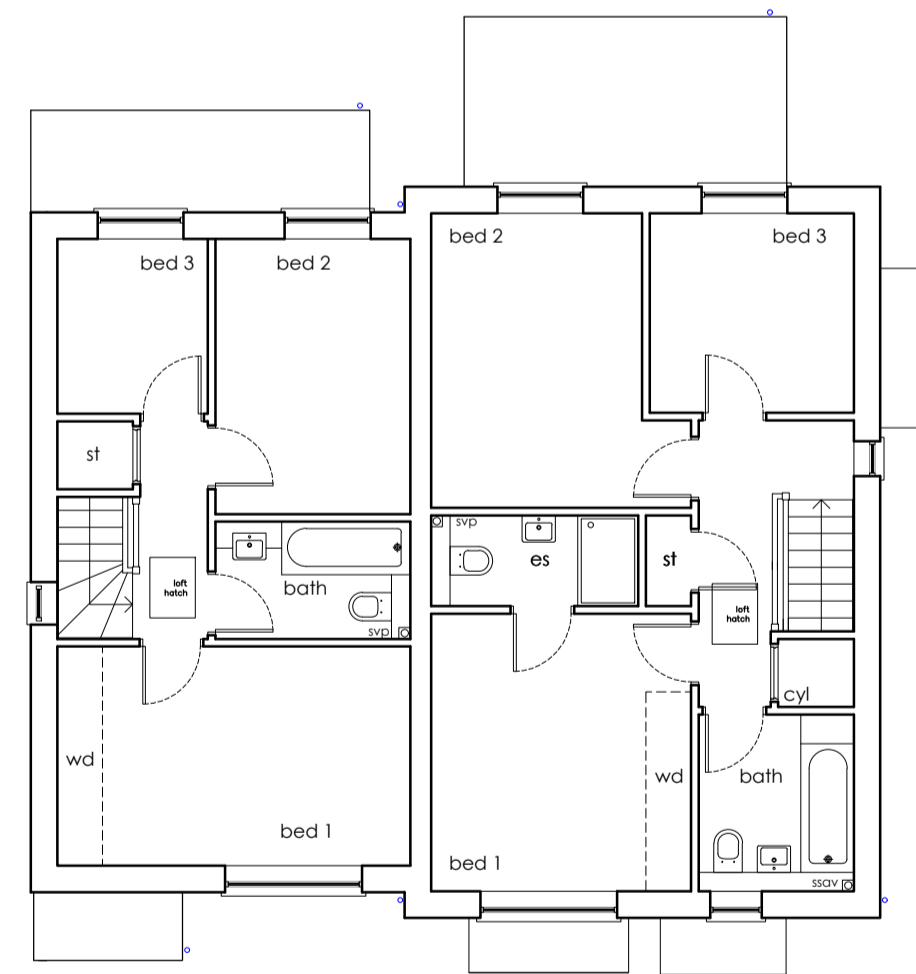
Rear elevation



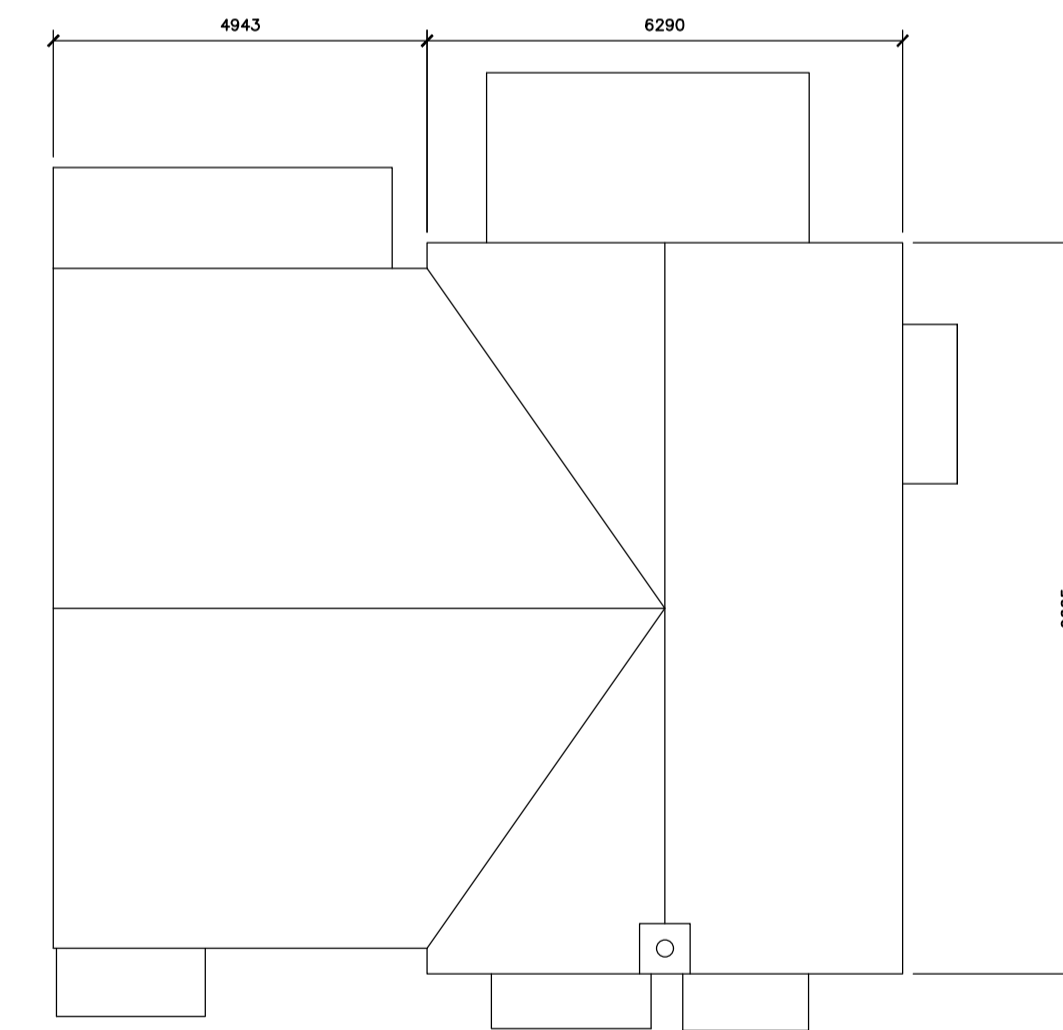
Side elevation



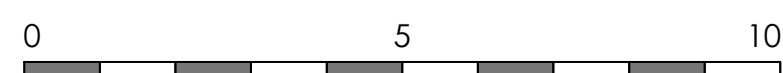
Ground floor plan
 Type A GIFA 83.3 sq/m (896 sq/ft)
 Type B GIFA 110.59sq/m (1190 sq/ft)



First floor plan



Roof plan



PLOTS 21-22

Rev	Revision note	Date	Drawn by
C	AMENDED GIFA	23.02.24	JW
B	BAY WINDOW ADDED	21.02.24	JW
A	SECTION REMOVED AND DRAWING AMENDED	15.02.24	JW

PROPOSED RESIDENTIAL DEVELOPMENT FOR STIRLIN DEVELOPMENTS LTD AT WOODBANK SKELLINGTHORPE			
Drawn by CV	Issue HOUSE TYPE AB OP (WITH BAY)	Date NOV 23	Scale 1:100 at A1
Framework Architects	Dwg No J2141 00115	Rev C	

3 MARINE STUDIOS, BURTON LANE END, BURTON WATERS, LINCOLN, LN1 2UA
 T: 01522 263381 E: info@frameworkarch.co.uk W: www.frameworkarchitects.co.uk
 Copyright © 2015 Framework All rights reserved