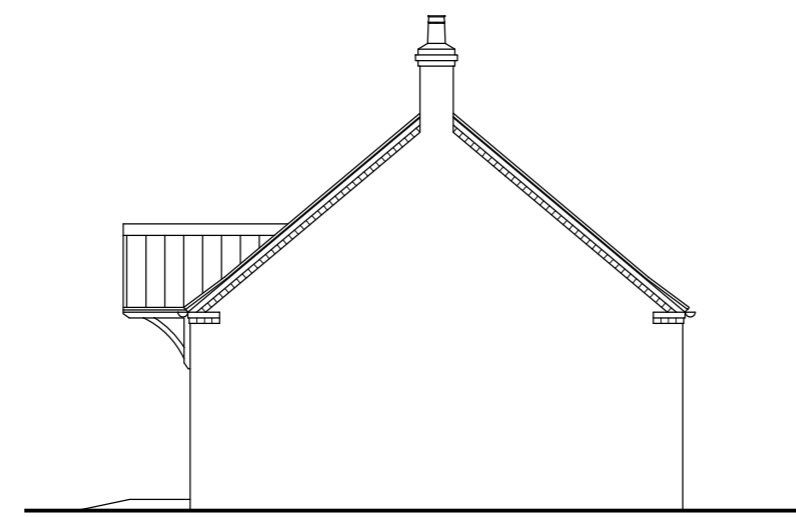


DO NOT SCALE OFF THIS DRAWING - ALL DIMENSIONS AND SETTING OUT TO BE VERIFIED ON SITE. IF IN DOUBT CONTACT THE ORIGINATOR FOR CLARIFICATION.

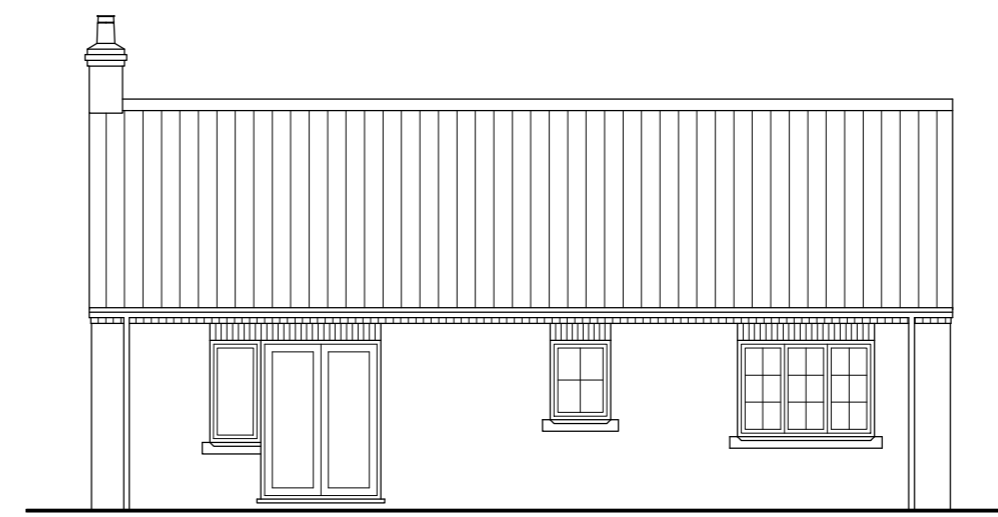
THIS DRAWING IS THE PROPERTY OF FRAMEWORK. COPYRIGHT IS RESERVED BY THEM AND THE DRAWING IS ISSUED ON THE CONDITION THAT IT IS NOT COPIED, REPRODUCED, RETAINED OR DISCLOSED TO ANY UNAUTHORISED PERSON, EITHER WHOLLY OR IN PART WITHOUT THE CONSENT IN WRITING OF FRAMEWORK



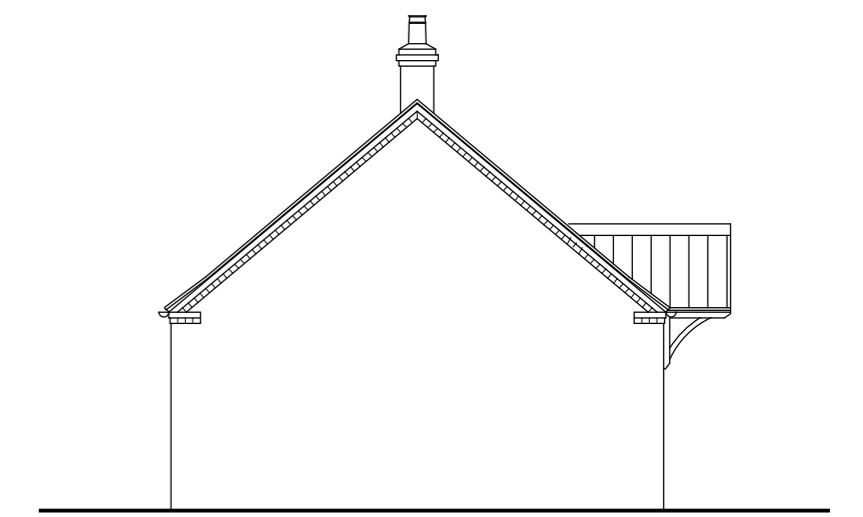
Front elevation



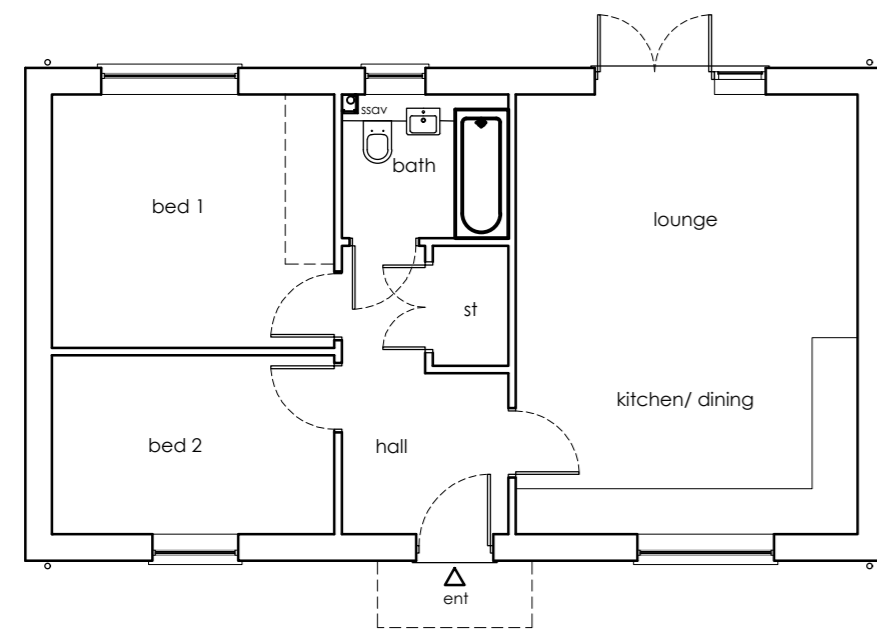
Side elevation



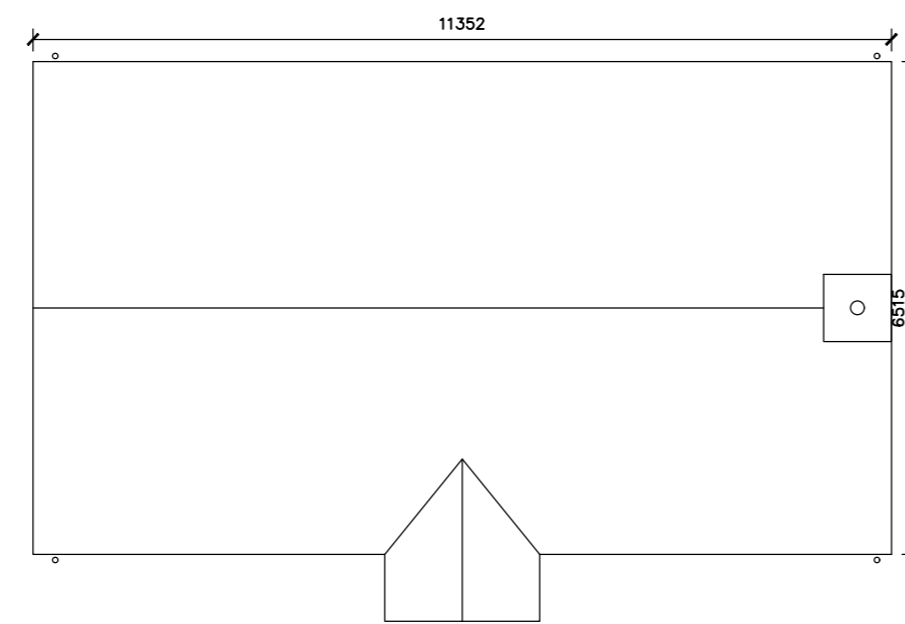
Rear elevation



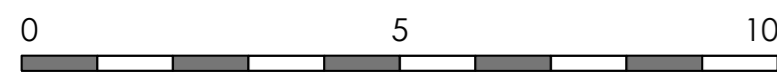
Side elevation



Floor plan
GIFA 62.4 sq/m (672 sq/ft)



Roof plan



PLOT 10

Rev	Revision note	Date	Drawn by
A	PLOTNUMBER ALTERED AND AMENDED DRAWING	15.02.24	JW
	PROPOSED RESIDENTIAL DEVELOPMENT FOR STIRLIN DEVELOPMENTS LTD AT WOODBANK SKELLINGHORPE		
	Drawn by CV	Issue	Date NOV 23
	HOUSE TYPE 2 BED BUNGALOW OP	Dwg No J2141 00133	Scale 1:100 at A2
			Rev A