

IMIST KEY

STN12 NOZZLE

TEMPERATURE RATING 68°C - 141°C
 DESIGN PRESSURE MINIMUM 80 bar
 DESIGN FLOW MINIMUM 6 litres per minute
 ACTIVATION Fast Response Frangible Bulb

STANDARD FITTING BLOCK FITTING

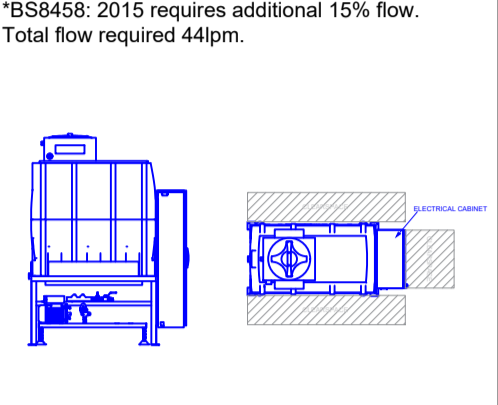
LUMI-PLUG-IN FITTING

STX12-6 PUMP UNIT

*REQUIRED FLOW 44 bpm
 MINIMUM REQUIRED PRESSURE 1 bar

(DIMENSIONS WITHOUT CLEAR SPACE)
 L 2100mm
 H 2400mm
 D 1350mm

*BS8458: 2015 requires additional 15% flow.
 Total flow required 44bpm.



IZONE (ZONAL ALARM VALVE SET)

NORMALLY OPEN CONTACT CONNECTION TO FIRE ALARM PANEL - BY OTHERS

(DIMENSIONS WITHOUT CLEAR SPACE)
 L 380mm
 H 150mm
 D 80mm

MAXIMUM ZONE SIZE OF 200 NOZZLES OR 2,400M²

OTHER

RISER 3/8" 1/2"

PIPEWORK 3/8" 1/2"

HIGH CEILING HEIGHT

IMPORTANT INFORMATION

PIPEWORK FIXING

WOOD SCREW WITH STONE
 CONCRETE SCREW WITH STONE
 PLASTERBOARD SCREW WITH STONE

NOZZLE OBSTRUCTION

Grid showing nozzle locations and obstructions.

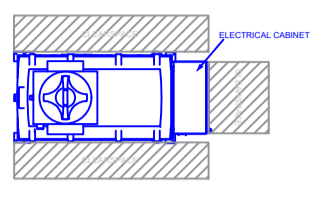
ELECTRIC & WATER SCHEMATIC

Standard IMIST Requirements

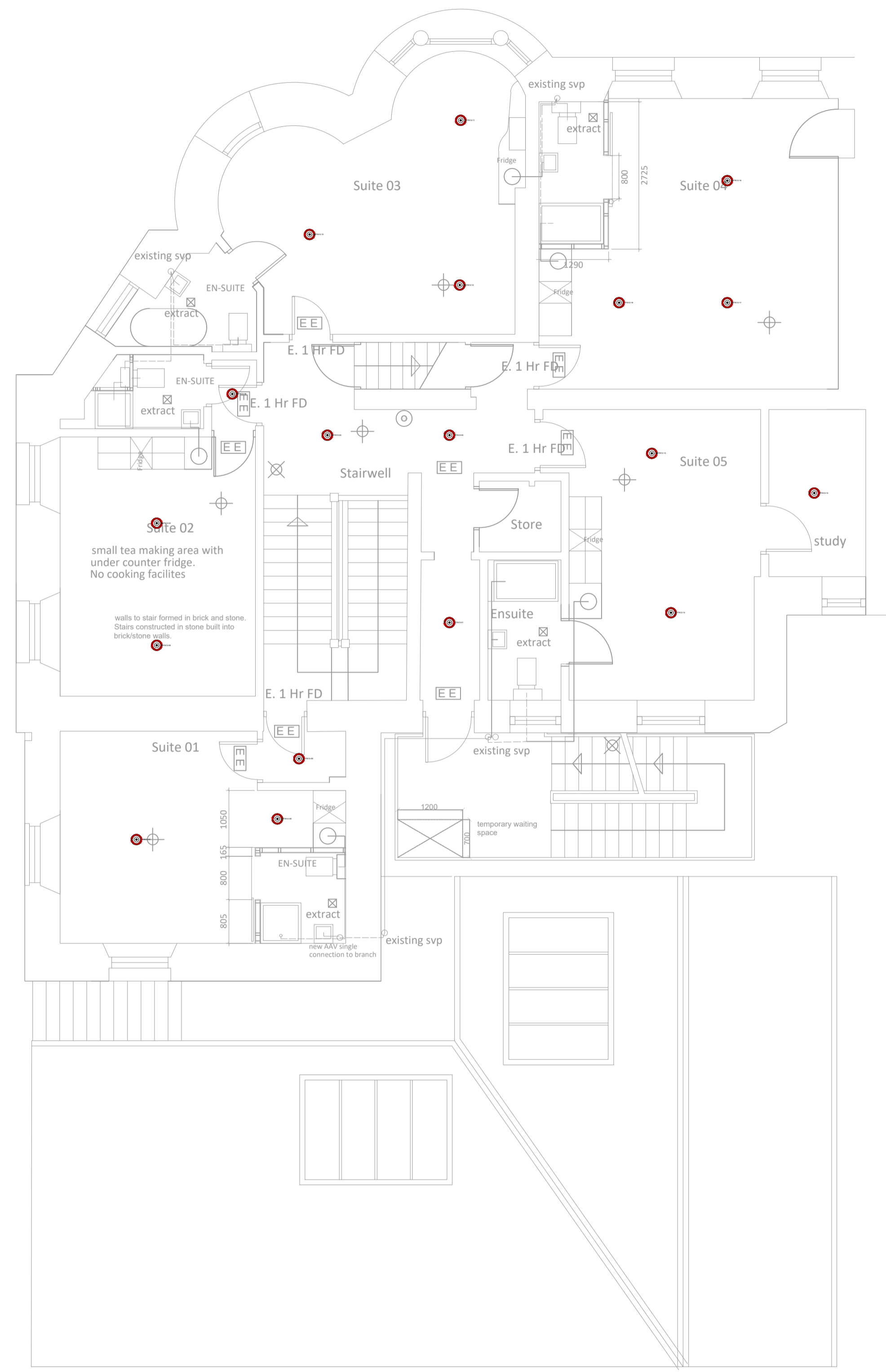
Typical undrafted cold water feed - if other feeds required, please ask for alternative schematic.

PRODUCTS FOR FULL PROJECT

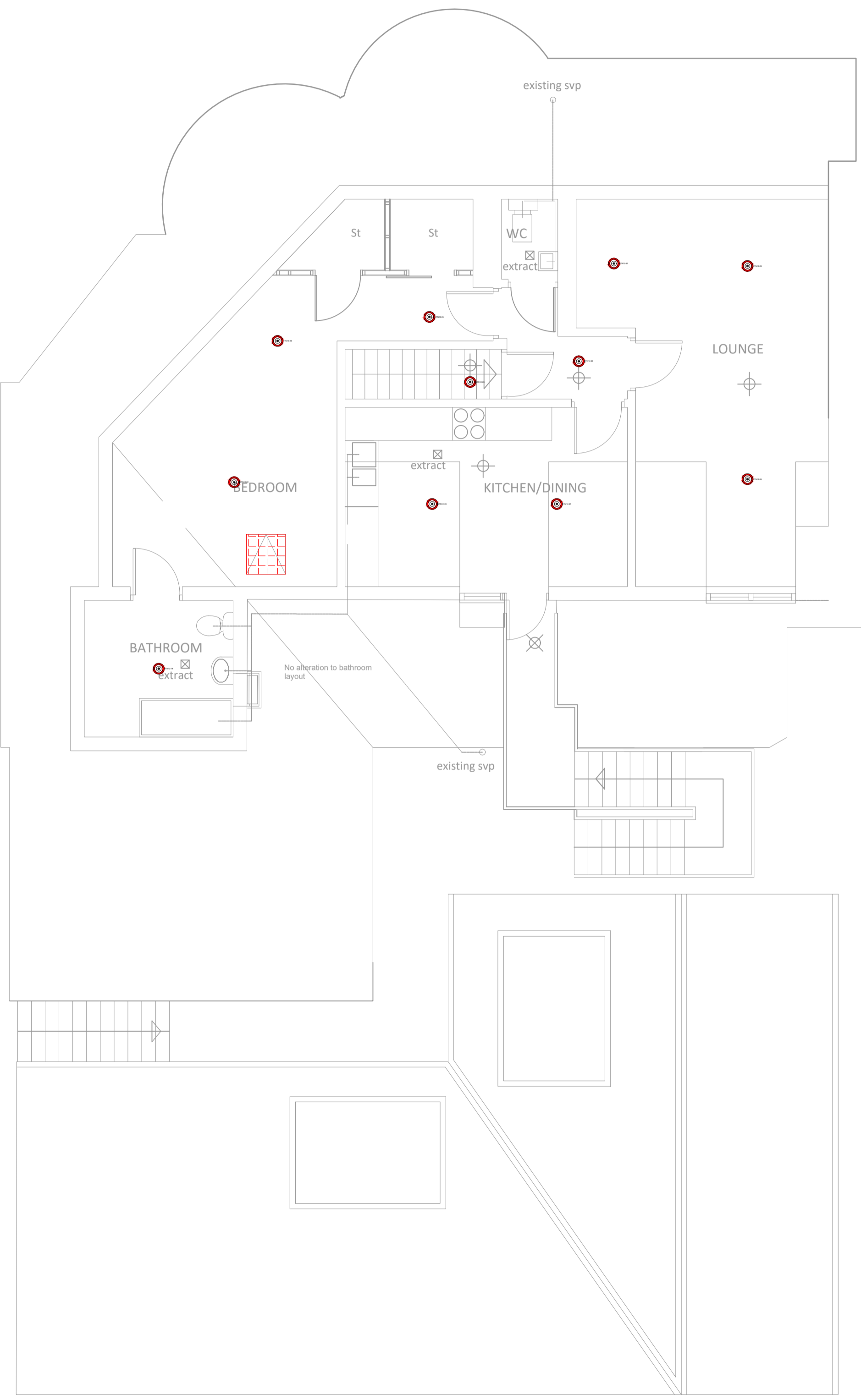
	QUANTITY
STN12 (STANDARD)	29
STN12-LUMI	0
BLOCK-SIDE	0
STN12 ONLY (SS DROP)	0
STX12-2	0
STX12-4	0
STX12-6	1
RISER(S)	4
3/8" IZONE(S)	0
1/2" IZONE(S)	2
3/8" PIPE	145
1/2" PIPE	0
12L PIPE	0
RAL COLOUR	



SKID PUMP TO GO IN A PLANT ROOM ON THE GROUND FLOOR



second floor as proposed



third floor as proposed

	QUANTITY
STN12 (STANDARD)	29
STN12-LUMI	0
BLOCK-SIDE	0
STN12 ONLY (SS DROP)	0
STX12-2	0
STX12-4	0
STX12-6	1
RISER(S)	4
3/8" IZONE(S)	0
1/2" IZONE(S)	2
3/8" PIPE	145
1/2" PIPE	0
12L PIPE	0
RAL COLOUR	

PRODUCTS ON THIS PAGE ONLY

DESIGN SPECIFICATION HAZARD CLASS	BS8458:2015 RESIDENTIAL
MAXIMUM DISCHARGE RATE	36 LITRES PER MINUTE
NOZZLE DROP	27MM
WATER SUPPLY	MAINS FED PUMP UNIT

IMIST LTD DESIGN DECLARATION OF CONFORMITY

IMIST LTD CONFIRM THAT THE WATERMIST SYSTEM DESIGN / INSTALLATION WITHIN THE PROTECTED AREA(S) ONLY AND ALL MANUFACTURED WATERMIST EQUIPMENT AND APPLICABLE TO POSITIVE DISPLACEMENT PUMPS ARE IN ACCORDANCE WITH BS 8458: 2015 REQUIREMENTS.

NOTES:

PUMP LOCATION TO BE SPECIFIED AT SITE VISIT.
 DESIGN PRODUCED IN LINE WITH THE IMIST LTD 'DESIGN AND INSTALLATION MANUAL' (QA1 ISSUE 2).
 ANY EXTRA NOZZLES OR LOSS OF NOZZLES WILL NEED TO BE APPROVED BY THE AHJ (AUTHORITY HAVING JURISDICTION).
 PRESSURE AT NOZZLE (STANDING); TOWNS MAINS PRESSURE.
 IMIST ONLY REQUIRE NATURAL VENTILATION PROVIDED BY WINDOWS AND DOORS INSTALLED.
 ALL PIPE TO BE PTFE06 SMOOTH BORE STAINLESS STEEL FLEXIBLE HOSE.
 ALL EXPOSED PIPING TO BE STAINLESS STEEL.
 EXACT NOZZLE LOCATIONS ARE SUBJECT TO CHANGE ON SITE INSTALL/REVIEW CONDITIONS AND COULD BE INSTALLED WITHIN 300MM OF DESIGNED LOCATION UNLESS HIGHLIGHTED OTHERWISE.

TO THE INSTALLER:

WET PIPE SYSTEM
 SYSTEM TO BE PRESSURE TESTED AS SOON AS POSSIBLE AFTER 1ST FIX COMPLETION
 NOZZLES MUST BE INSTALLED AS SHOWN
 NOZZLE SHOULD BE POSITIONED IN ACCORDANCE WITH OBSTRUCTION GRAPH TO AVOID IMPACT ON DISCHARGE
 P CLIPS TO BE INSTALLED NOMINAL 300MM SUBJECT TO SITE CONDITIONS.
 ALL NOZZLES TO BE INSTALLED OFF TEE BRANCH

TO THE CLIENT:

IF REQUIRED, PIPE IDENTIFICATION TO BS 1710 REQUIREMENTS MUST BE PROVIDED BY OTHERS. BS 1710 IDENTIFICATION CAN BE PROVIDED BY IMIST AT ADDITIONAL COST.
 IMIST LTD DO NOT ACCEPT AND RESPONSIBILITY FOR DAMAGE CAUSED BY FROST OR FREEZING TEMPERATURES.
 NOTE: IT IS THE CLIENTS RESPONSIBILITY TO TAKE CORRECT PRECAUTIONS TO PREVENT WATER IN THE PIPEWORK/EQUIPMENT FROM FREEZING DUE TO COLD WEATHER.
 IT IS THE CLIENTS RESPONSIBILITY TO INFORM IMIST LTD OF ANY AREAS WHERE THE AMBIENT TEMPERATURE WILL EXCEED 38°C.
 NOTE: PER BS 8458:2015, FOR TYPICAL CONDITIONS IN THE UNITED KINGDOM NORMAL WATERMIST NOZZLE TEMPERATURE RATINGS ARE BETWEEN 57°C AND 68°C.
 PIPES, SCAFFOLDING OR ANY OTHER ITEMS OF PLANT MATERIALS MUST NOT AT ANY TIME BE ATTACHED TO OR SUPPORTED FROM ANY PART OF THE FIRE PROTECTION EQUIPMENT, CONTROLS, NOZZLES ETC.
 MINIMUM 1 BAR, AT CEILING LEVEL OF HIGHEST PROTECTED AREA
 NOZZLES MUST NOT BE PAINTED.

THIS DRAWING SHOULD BE FULLY CO-ORDINATED WITH ALL OTHER SERVICES AND CONSTRUCTION DRAWINGS INVOLVED IN THIS PROJECT. IMIST LTD SHOULD BE NOTIFIED OF ANY CLASHES WITHIN 7 DAYS OF ISSUE.
 ANY SITE ALTERATIONS REQUIRED AS A RESULT OF LATE CO-ORDINATION OR INFORMATION WILL BE CHARGEABLE.
 THE SQUARE METER IS APPROXIMATE AND IT IS THE CUSTOMERS RESPONSIBILITY TO INFORM IMIST IF THEY HAVE UNDERESTIMATED ROOM/ BUILDING SIZES.
 SLEEVES / FIRE STOPPING TO BE INSTALLED BY OTHERS.
 CLIENT TO PROVIDE SUITABLE DRAIN OUTLET AT THE PUMP LOCATION FOR TESTING/SERVICING.
 CLIENT TO UNDERTAKE 25MM/30MM HOLES THROUGH BEAMS, STRUCTURAL ELEMENTS OR OBSTRUCTIONS.
 ALSO TO CUT 76MM HOLE FOR NOZZLE LOCATION.
 CLIENT TO INSTALL INTERCONNECTING CABLES FROM ALL FLOW SWITCHES AND PUMP RUNNING TERMINAL, TO MAIN FIRE ALARM PANEL TO INITIATE SITE WIDE GENERAL ALARM.

PLEASE SEE WORKS IN ASSOCIATION SECTION OF YOUR QUOTATION FOR ELECTRICAL AND MECHANICAL REQUIREMENTS OF THE IMIST SYSTEM PRIOR TO INSTALLATION.

REV	DESCRIPTION	DATE	DRAWN	CHECKED
4	1 NOZZLE ADDED	16/10/2023	LF	-
3	2 NOZZLES REMOVED	29/08/2023	LF	-
2	COVERAGE ADDED TO LANDING	21/08/2023	LF	-
1	CHANGED TO SKID PUMP AS PER FIRE STRATEGY	15/02/2023	SW	-
0	FOR APPROVAL	26/08/2022	BY	-

ISSUED FOR
 CUSTOMER APPROVAL / AHJ APPROVAL / CONSTRUCTION / COMPLETION

PROJECT ADDRESS
 1 Corn Exchange Road
 Stirling
 Stirlingshire
 FK8 2HX

SCOPE OF WORKS 1 SKID PUMP(S) & 29 NOZZLES	TITLE SECOND-THIRD FLOOR LAYOUT
PROJECT NUMBER Q22-13028	REV NO. 4



REGISTERED ADDRESS UNIT 11 PARK ROAD INDUSTRIAL ESTATE SWANLEY BR8 8AH	CONTACT: 0808 122 3344 WWW.IMIST.COM SALES@IMIST.COM
---	--

This drawing is copyright & may not be copied or reproduced in whole or in part without the prior consent of iMist Ltd. Dimensions must not be scaled from this drawing. All dimensions to be checked on site prior to work or manufacture of any elements taking place. Any discrepancy to be reported to this office.