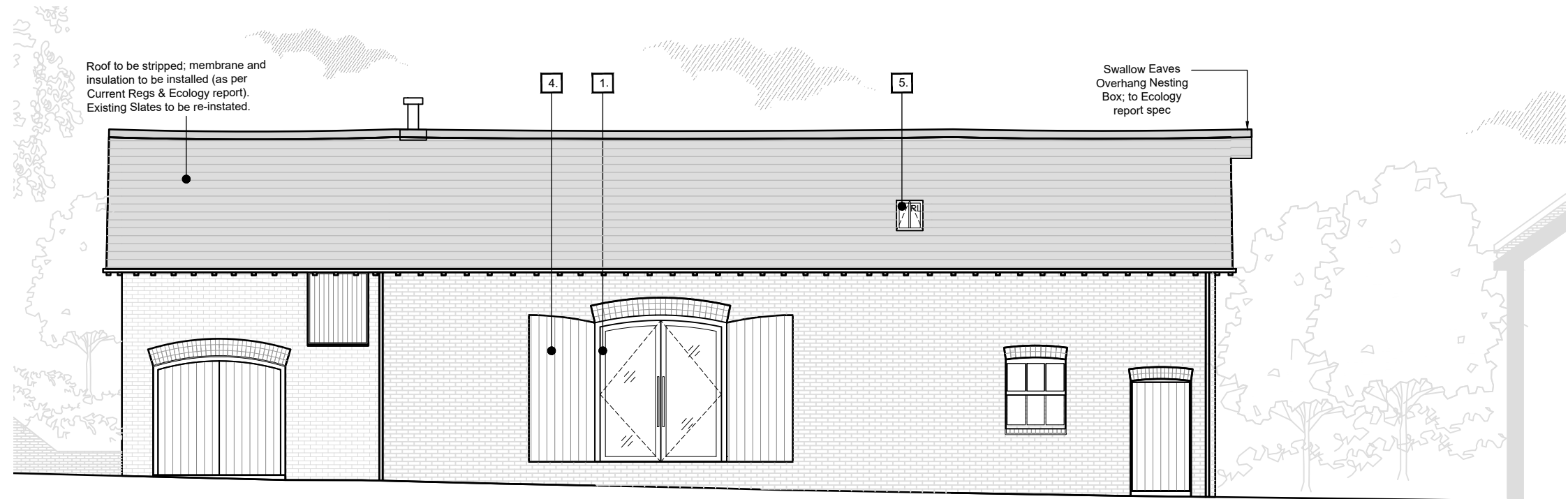
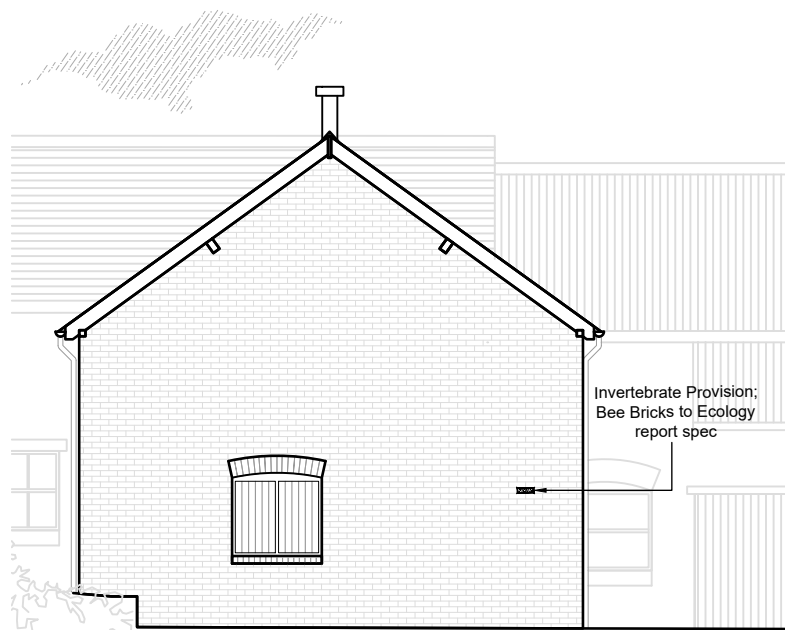


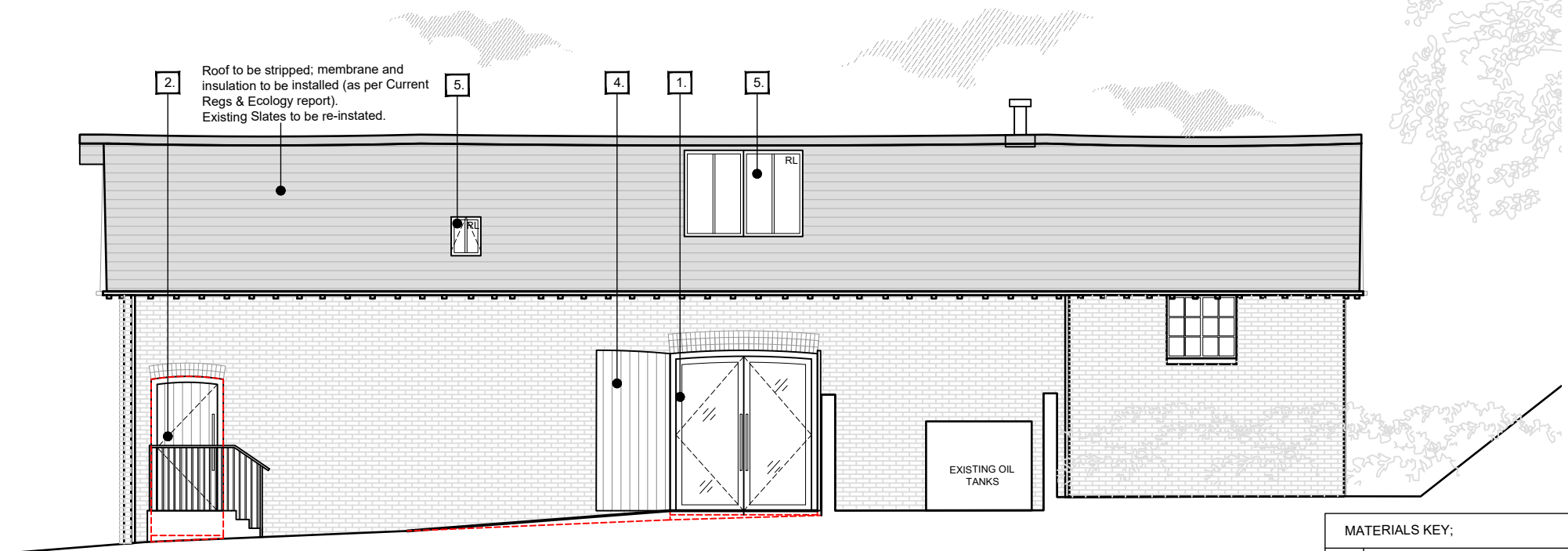
NORTH ELEVATION



EAST ELEVATION



SOUTH ELEVATION



WEST ELEVATION

ECOLOGY NOTE:

- 3no. Swallow Nesting Cups mounted within the roof structure of adjacent Barn A; as per Ecology report.
- Bat Roosting void for Horseshoe Bats within 'New Bat Roost' building on site (see dwg PP_11) to include 4no. inbuilt and internally mounted Bat Roosting provisions, as per Ecology Report.



MATERIALS KEY;	
1.	Door; Timber, Double Glazed
2.	Door; Solid Timber
3.	Window; Timber, Double Glazed
4.	Existing Timber doors to be re-used as timber Shutters externally
5.	Conservation style Rooflights (Rooflights fitted with 'Daylight / Night Shut' sensor operated blinds)
6.	Brick to match existing and to match Barn C, reuse existing where possible.
7.	Slate to match Barn C.