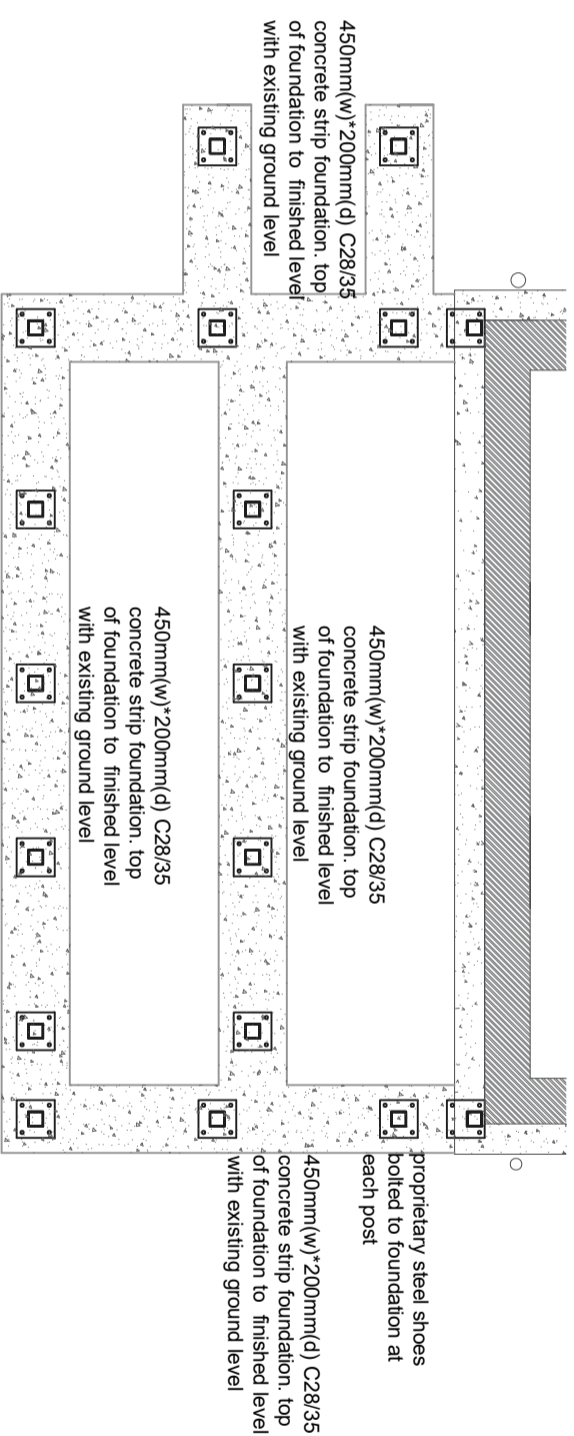
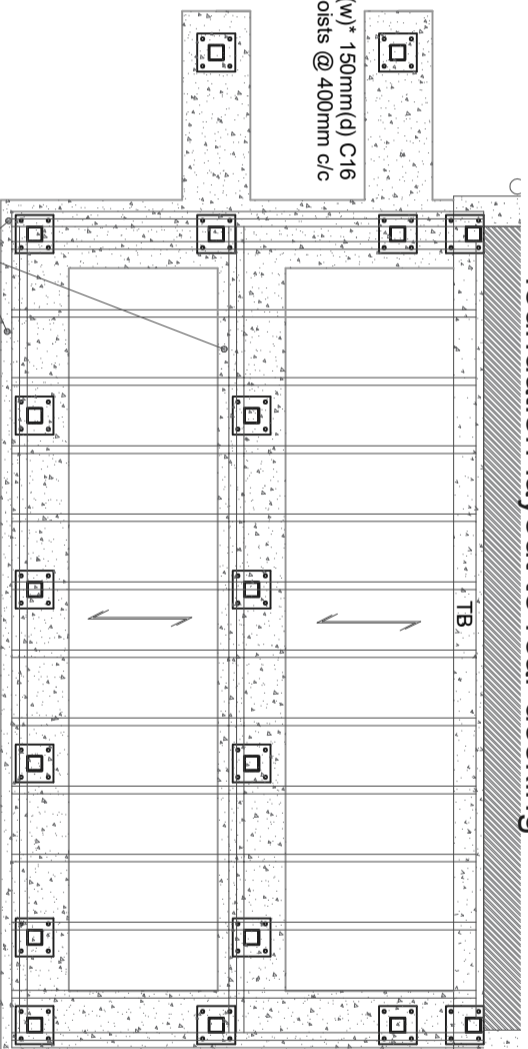


section thro' decking (typical)



foundation layout to rear decking



joist layout to rear decking

**STAIRS AND BALUSTRADE:**  
STAIR & BALUSTRADE TO BE OF ADEQUATE STRENGTH AND STIFFNESS TO SUSTAIN THE APPLIED LOADS GIVEN IN TABLE 4 OF BS 6399-1:1996 WITHOUT PERMANENT DEFLECTION OR DISTORTION

LOADS  
HORIZONTAL UDL 0.74 kN/m  
UDL APPLIED TO INFILL 1.0 kN/m<sup>2</sup>  
POINT LOAD TO PART OF INFILL 0.50 kN

**TIMBER DECKING:**  
GENERAL TIMBER DECKING REQUIREMENTS TO BE IN ACCORDANCE WITH FOLLOWING SPECIFICATION:

- STRUCTURE TO PROVIDE MINIMUM SERVICE LIFE OF 15 YEARS.
- TIMBER: NATURALLY DURABLE OR PRE-TREATED TO THE CORRECT USE CLASS:
- USE CLASS 4 TREATMENT: FOR POSTS AND OTHER STRUCTURAL COMPONENTS IN DIRECT GROUND OR FRESHWATER CONTACT
- USE CLASS 3 TREATMENT: FOR ALL COMPONENTS OUT OF DIRECT GROUND CONTACT SUBJECT TO FREQUENT WETTING.
- RESISTANT TO DECAY TO BE USED IN ACCORDANCE WITH BS EN 335. TIMBER JOISTS TO BE SIZED SUITABLY TO PROVIDE LEVEL THRESHOLD BETWEEN HOUSE, DECK AND STAIR FLIGHTS. JOISTS TO BE SPACED AT 400MM CTRS MAX.

- TIMBER GRADE (STRENGTH CLASS): C16 MINIMUM
- TIMBER MOISTURE CONTENT AT INSTALLATION: 20% MAXIMUM
- FIXINGS TO BE SELF-COUNTERSINKING STAINLESS STEEL, WHERE VISIBLE. HOLES TO BE PRE-DRILLED TO AVOID SPLITTING OF TIMBER. AT ALL JOIST CROSSING POINTS SECURE BOARDS WITH TWO FIXINGS POSITIONED AT THE OUTER ¼ POINTS OF THE DECKBOARD IE 25% IN FROM EITHER EDGE. ON GROOVED BOARDS FIXINGS SHOULD ALWAYS BE AT THE BOTTOM OF GROOVES.
- FALLS: A FALL OF 1° (1:100MIN) TO BE FORMED. GROOVED DECKBOARDS ARE DESIGNED TO ASSIST DRAINAGE OF SURFACE WATER, LAY THEM IN THE DIRECTION OF FALL.

• THE TDATRADADA TIMBER DECKING MANUAL.

- BRITISH STANDARDS: BS EN 335-1; BS EN 335-2; BS EN 335-3; BS EN 350-1; BS EN 350-2; BS EN 351-1; BS EN 351-2; BS EN 460; BS EN 599-1; BS 8417; BS 5756; 1985; BS 6105; 1981; BS 6399-1; 1996; BS 7359; 1991; BS 5268-2; 2002; BS 6180; 1999; BS 6399-1; 1996.

- SETTING OUT OF DECK TO BE COORDINATED WITH EXTENSION SETTING OUT.
- BOARD SPACING: 5MM MIN - 8MM MAX: WHERE BOARD ABUTS A POST ALLOW 5MM; WHERE BOARD ENDS MEET ALLOW 3MM.

REVISION	DESCRIPTION	DATE

  
**THE FUNDAMENTA GROUP**  
 Structural Engineers  
 Design Consultants  
The Successors of four groups

EZY ENGINEERING  
 THE FUNDAMENTA GROUP  
 CLYDE OFFICES, 48 WEST GEORGE STREET,  
 GLASGOW, G2 1BP  
 Tel: 07456892746  
 Email: ezzy@fundamentagroup.co.uk

PROJECT  
 FUN/CAI/01  
 PROPOSED INTERNAL ALTERATIONS &  
 ALTERATIONS TO REAR ROOF  
 1 CARINGORM ROAD, GLASGOW  
 TITLE  
 PROPOSED DECKING LAYOUT &  
 SPECIFICATION

DRAWN BY	CHECKED BY	DATE
RC	BA	29/11/2023
DRAWING NUMBER	REVISION	SCALE
S/04	-	NTS
STATUS	FOR APPROVAL	