

1 EXTERNAL SIGNAGE ELEVATION



EXTERNAL FASCIA SIGN 1

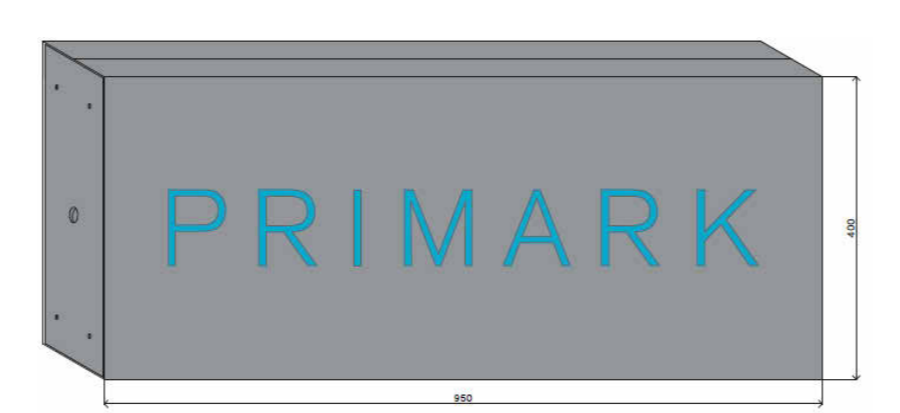
BUILT UP INTERNALLY ILLUMINATED LED LETTERS FIXED TO ALUMINIUM PANEL
 - 0.9MM THICK STAINLESS-STEEL RETURNS
 - AQUA LED LETTERING
 BACKING PANEL ALUMINIUM RAL 7037 DARK GREY

PLEASE REFER TO SUBMITTED WIDD SIGNS DOCUMENT FOR SECTION DETAILS OF SIGNAGE



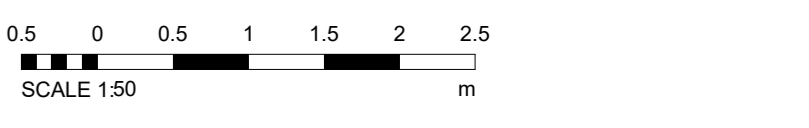
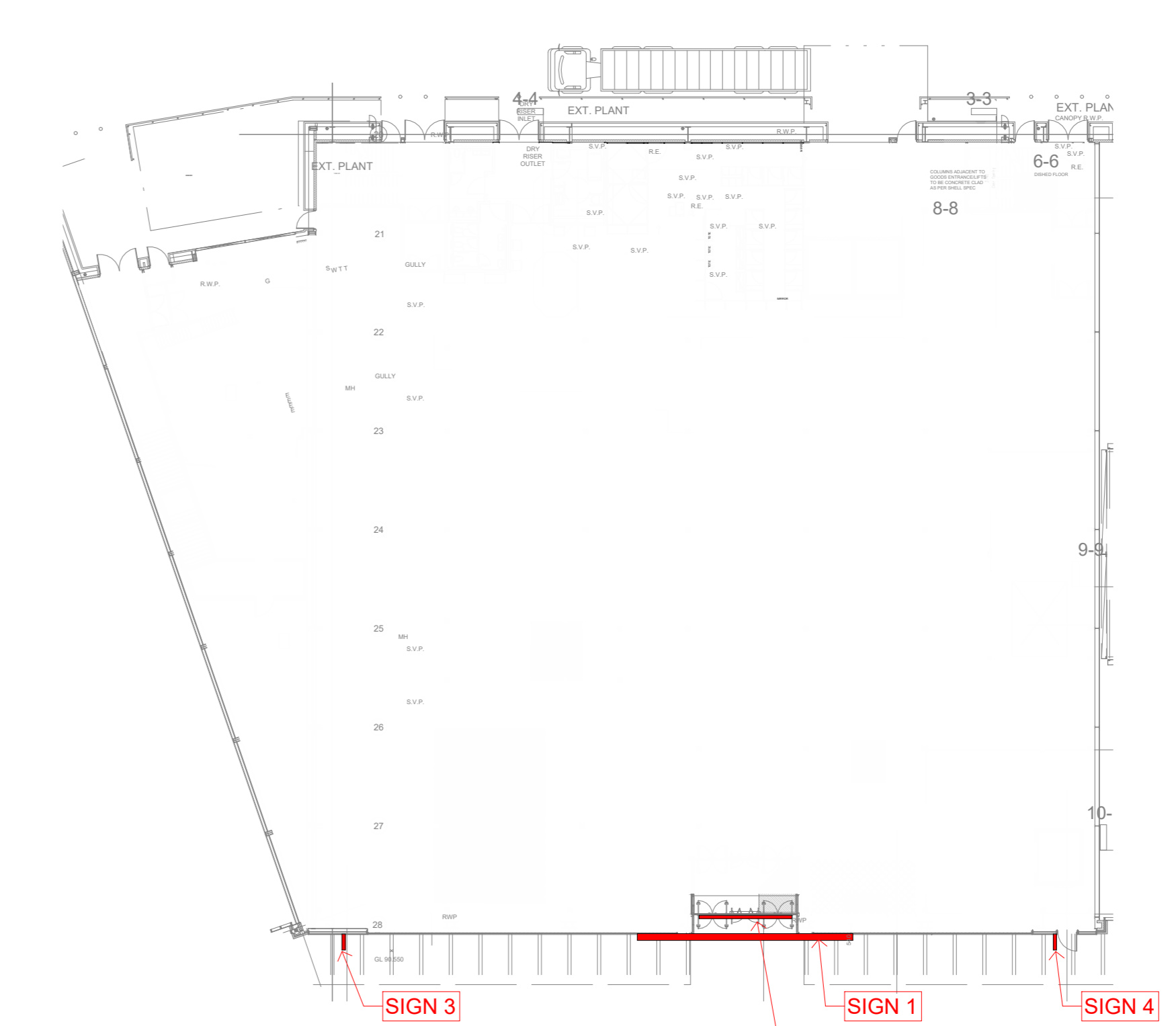
EXTERNAL FASCIA SIGN 2

700MM HIGH, INTERNALLY ILLUMINATED LED LETTERS, INDIVIDUALLY FIXED
 COLOUR: WHITE LED



PROJECTING BUS STOP SIGN 3/4

950 (W) X 400 (H) X 150MM (D) BUS STOP SIGNS ILLUMINATED AQUA LED LETTERING MOUNTED TO FRAME
 BACKING PANEL / BOX TO BE RAL 7037 DARK GREY



| | | | |
|--|--------------|------------------------------|---------|
| 4.2 | 28.01.24 | NOTE RE: MANIFESTATION ADDED | |
| 4.1 | 18.01.24 | ALL ELEVATIONS UPDATED | |
| REV | DATE | DESCRIPTION | DRAWN |
| TENDER | | | |
| CLIENT | | | |
| PRIMARK® | | | |
| PROJECT | | | |
| GLASGOW FORT RETAIL PARK | | | |
| DRAWING | | | |
| SHOPFRONT ELEVATIONS | | | |
| CONSULTANT | | | |
| NJSR Chartered Architects LLP SOUTHPORT +44(0) 170 453 1252 MANCHESTER +44(0) 161 873 8770 www.njsr.co.uk | | | |
| CONSULTANT No | SCALE | DATE | DRAWN |
| 1169.125 | As indicated | NOV '23 | - |
| DRAWING REFERENCE | | | CHECKED |
| DRA NJS GLASGOW FORT AR120 | | | REV |
| | | | 4.2 |