

PRIMARK

Primark Glasgow Fort External Proposal

WIDD SIGNS

Primark_Glasgow Fort_Externals_v5

05/02/24

Issue:

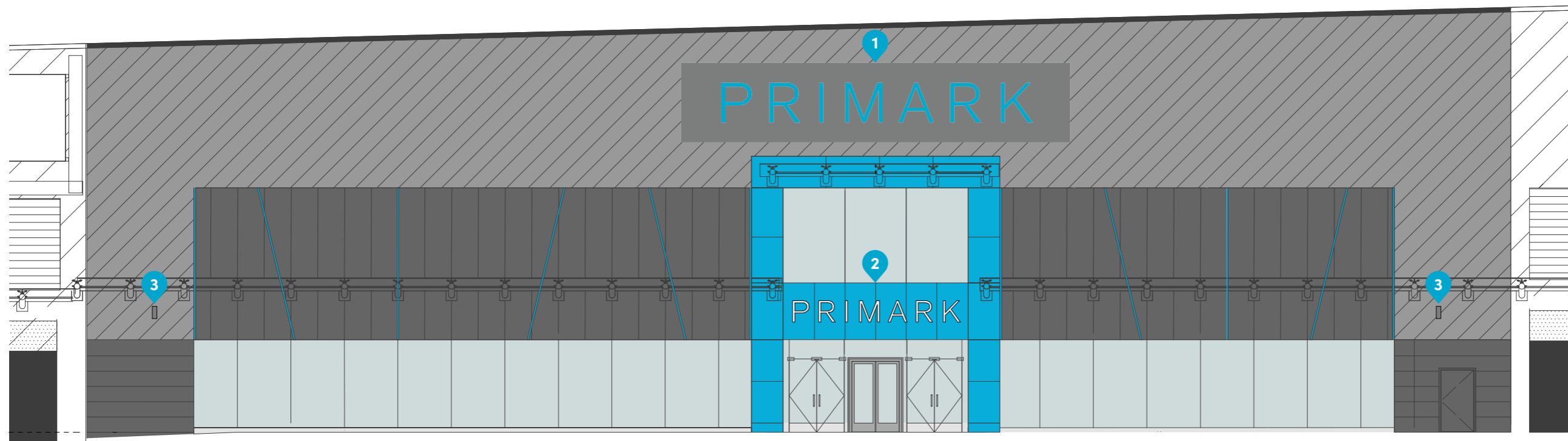
28/07/23_v1

08/11/23_v2

18/12/23_v3

18/12/23_v4

05/02/24_v5



Front Elevation - Option A
Based on - Dra NJS Glasgow Fort AR120 [4.0]
Scale 1:150

SPECIFICATIONS

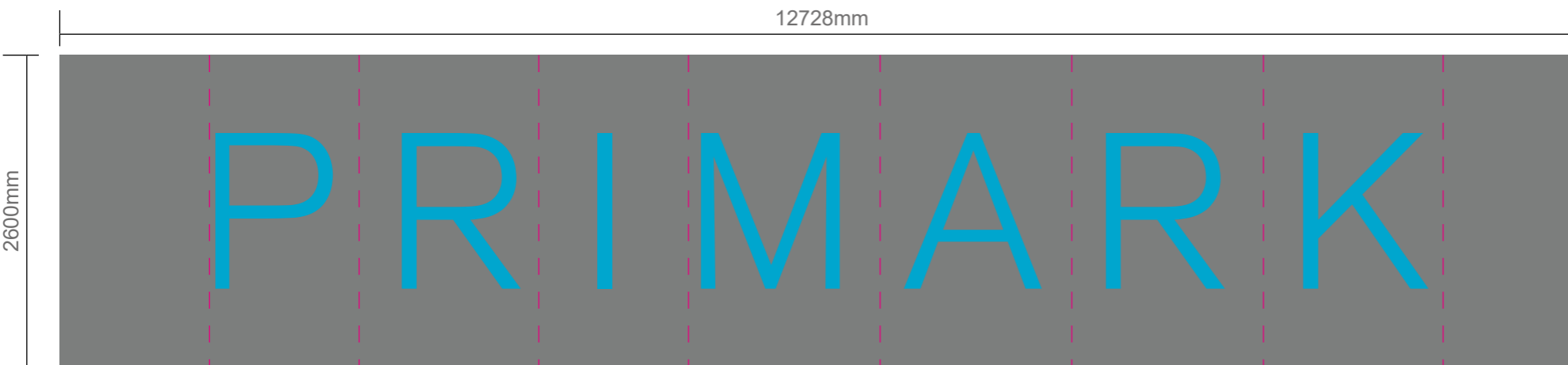
- Built up internally illuminated LED letters fixed to aluminium panel
 - 0.9mm thick stainless steel returns, soldered construction
 - 10mm thick blue acrylic face, Ref 6972
 - External returns decorated RAL 9011 Charcoal
 - Inside faces to be decorated white satin RAL 9003
 - 3mm thick Dibond backtray
 - 2mm Aluminium back panel painted RAL 9011 'Charcoal'
 - Primark Aqua 12V LED Modules
- 3mm folded aluminium panels, painted RAL 7037
 - Approx panel joints as indicated on drawing
 - Back panel to be mechanically fixed to structural rails, rails to be provided by others
- Transformer location tbc on site

WEIGHT - SIGN 1

Back Panels - 280kg
 Front Panels - 285kg
 Letters - 65kg
 TOTAL - 630kg



Setting Out Guidelines



Sign 1
 Scale 1:50

3mm thick aluminium front panel, decorated RAL 7037. Front panel mechanically fixed to back panel with colour matched countersunk screws

Acrylic bonded and mechanically fixed with grub screw into returns

Built up illuminated letter screw fixed to front panel;

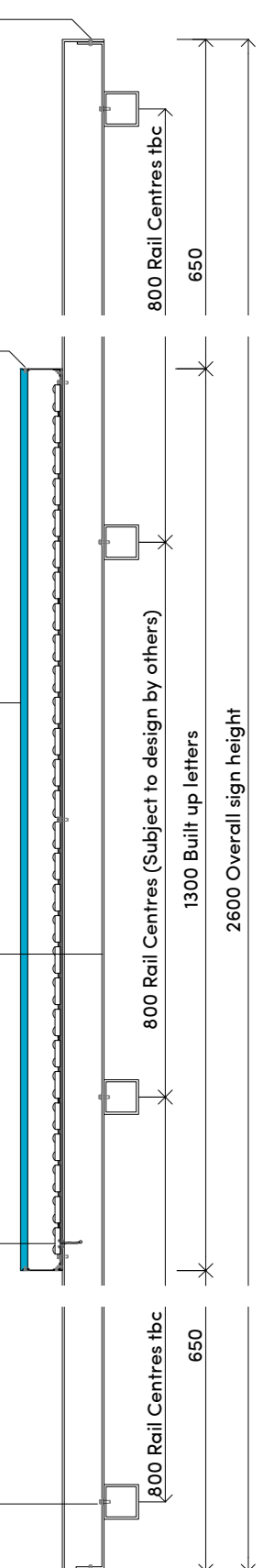
- 0.9mm thick stainless steel soldered construction letters. Painted RAL 9011 'Charcoal'
- 3mm thick Dibond backtray (Ref 6972), with 5mm rebates to sit over returns. Flame polished edges. Acrylic bonded and mechanically fixed into returns

3mm thick full aluminium back panel, decorated RAL 7037. Back panel mechanically fixed to Landlord rails

All cabling to run within aluminium box, exit position to be agreed

Aluminium back panels to be mechanically fixed to rails. Rails designed and installed by others

Section Detail
 (Sign 1B Shown)
 Scale 1:10

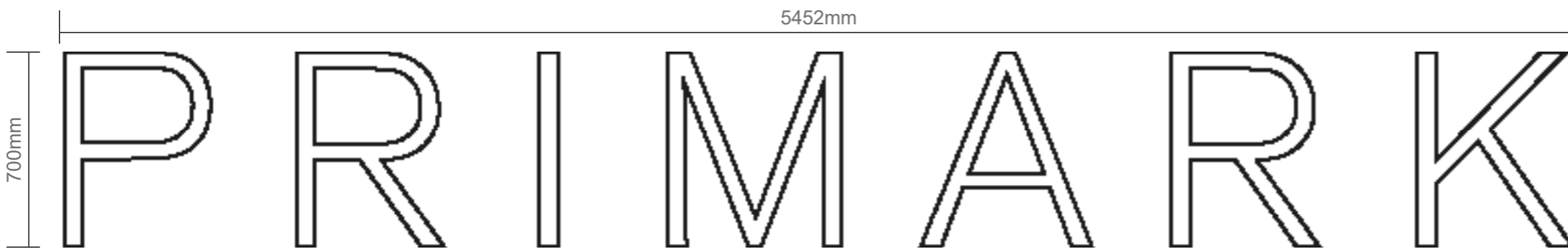


SPECIFICATIONS

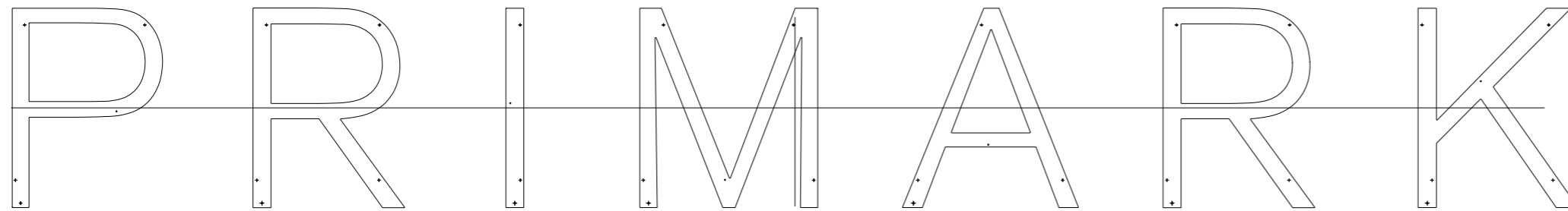
- 700mm high, internally illuminated LED letters
- 1.5mm thick soldered construction
- 10mm opal 050 acrylic
- External returns decorated RAL 9011
- Inside faces to be decorated white satin
- 3mm dibond foamex backtray
- Blue colour 15W LEDs
- Sign to be mechanically fixed to glazing with bespoke glazing fixings
- Letters mechanically fixed to aluminium panels with Tek screws

WEIGHT

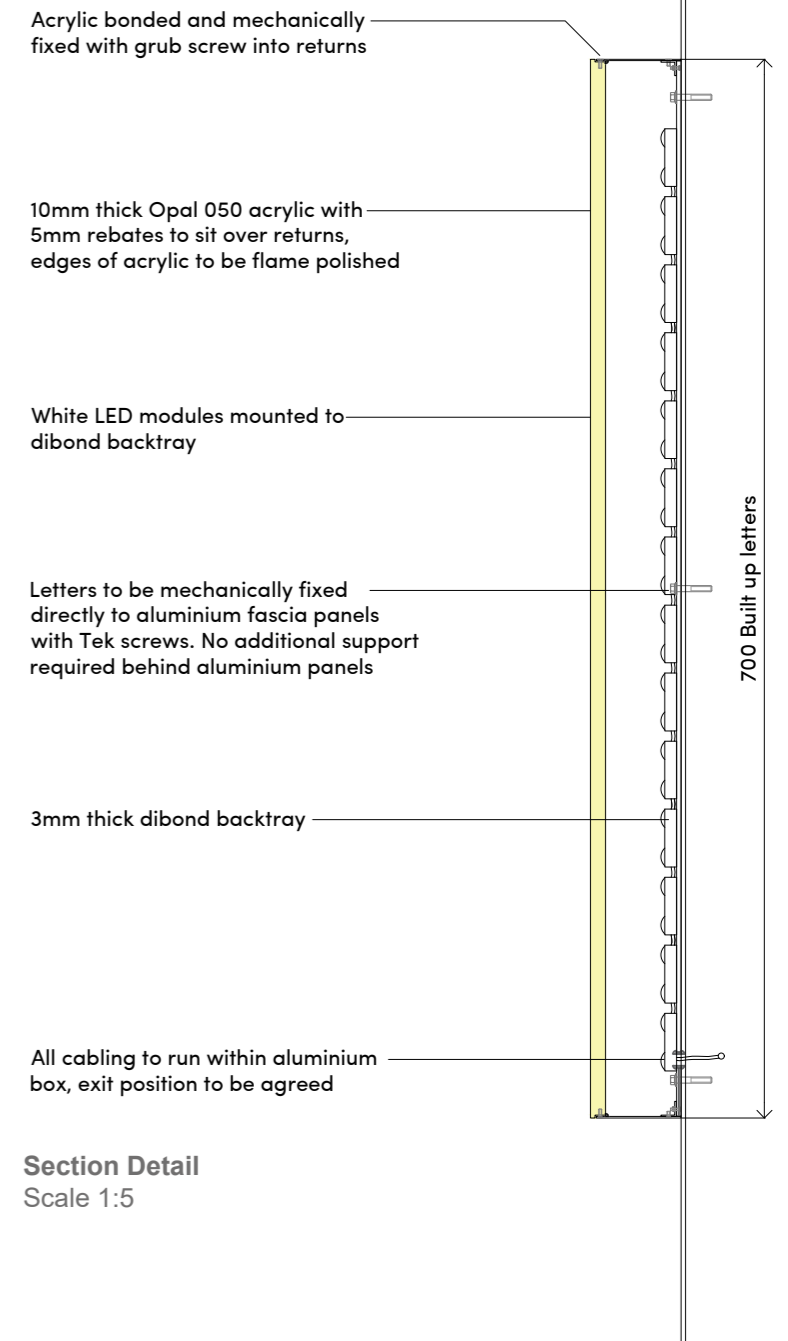
Letters - 30kg (Total set)



Sign 2
Scale 1:20
Quantity x1



Fixing Template
Scale 1:20



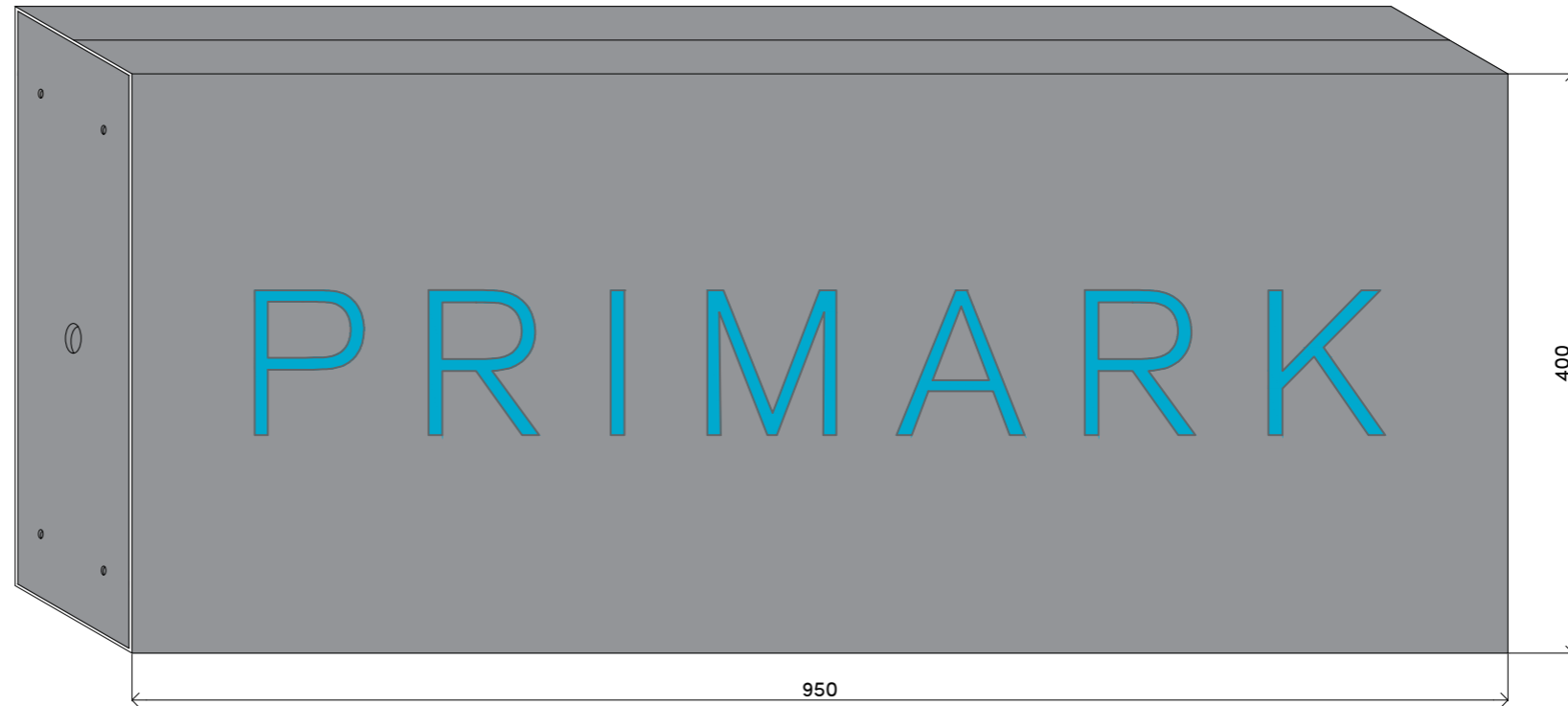
SPECIFICATIONS

- New 950 x 400 x 150mm bus stops to be installed;
- 3mm aluminium frame with 5mm aluminium wall plate welded into frame
- Aqua LEDs mounted in frame
- 2mm aluminium covers, with fret cut Primark letters, letters 65mm high
- Letters baked up with 5mm aqua acrylic

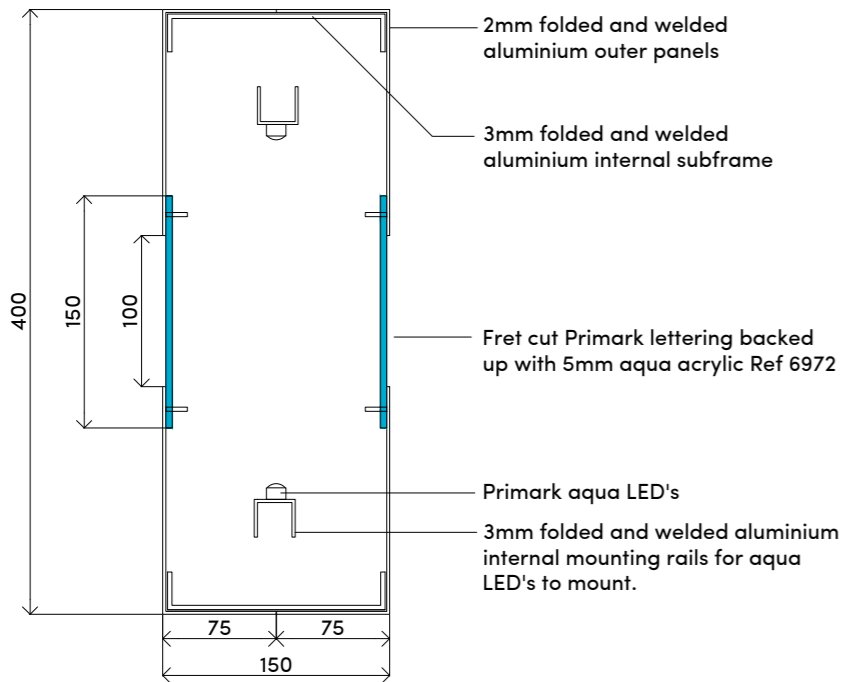
Quantity 2

WEIGHT

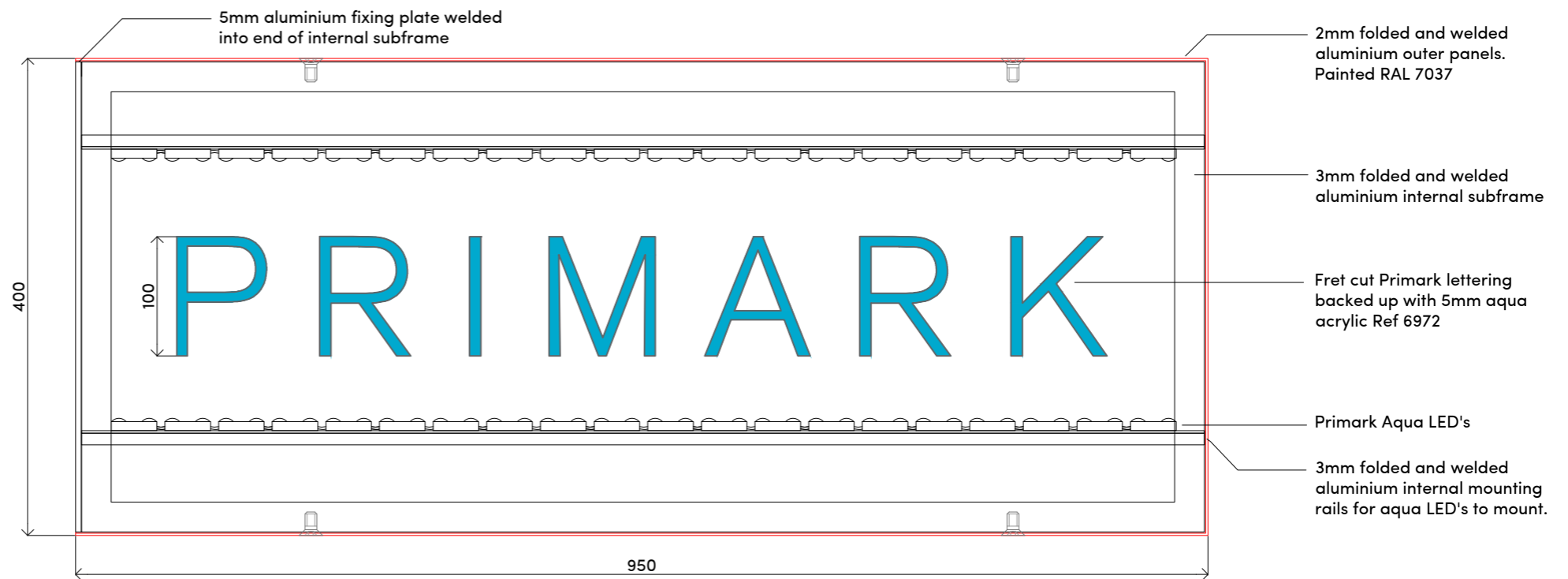
Letters - 15kg



Elevation
Scale 1:5



Section Detail
Scale 1:5



Section Detail
Scale 1:5