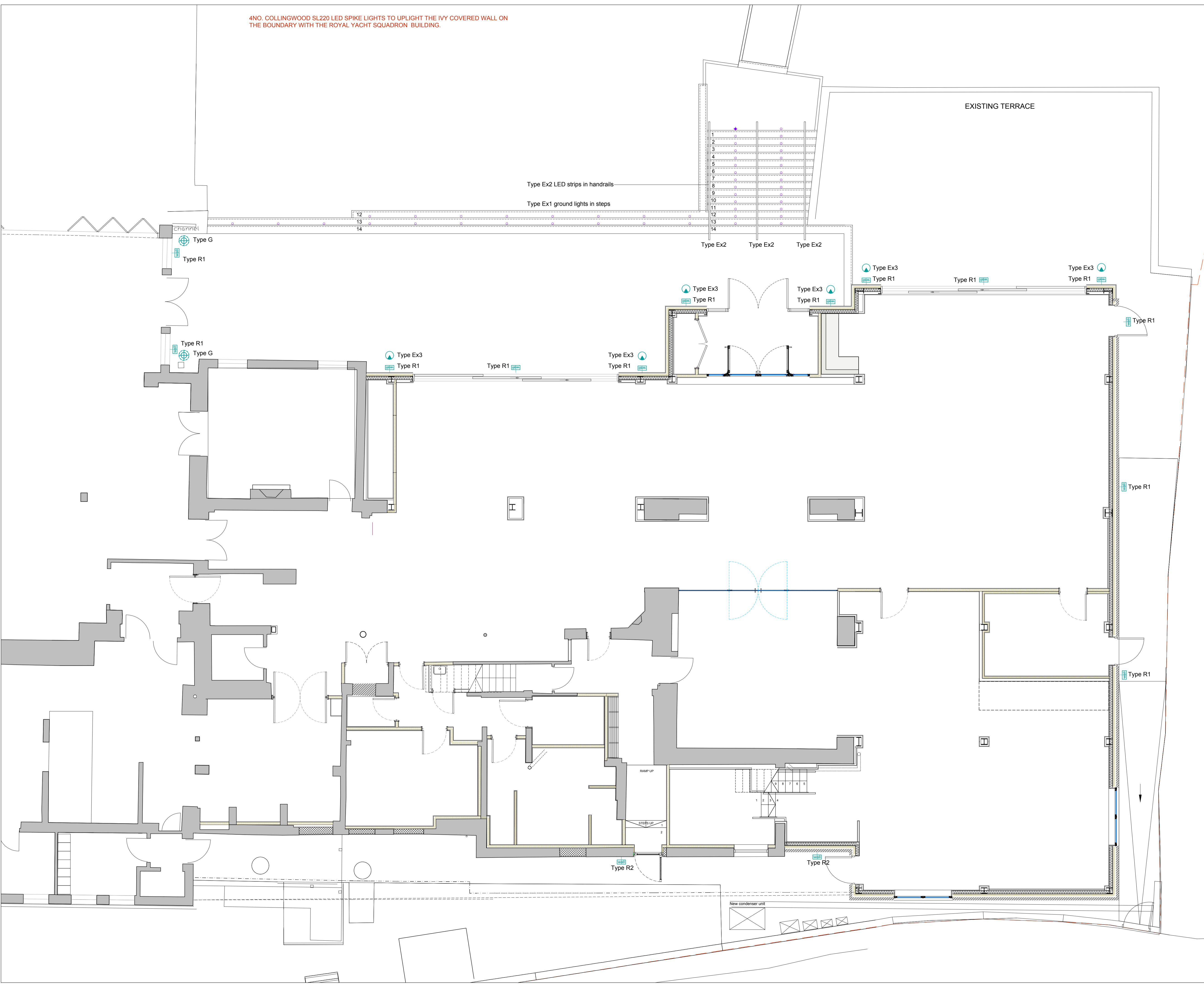


4NO. COLLINGWOOD SL220 LED SPIKE LIGHTS TO UPLIGHT THE IVY COVERED WALL ON THE BOUNDARY WITH THE ROYAL YACHT SQUADRON BUILDING.

DO NOT SCALE OFF THIS DRAWING
REPORT ANY ERRORS OR
DISCREPANCIES TO THE
ARCHITECT PROMPTLY



- + **TYPE EX1**
FLUSH GROUND LIGHT TO MATCH EXISTING AT ENTRANCE OF THE SITE
MANUFACTURER: COLLINGWOOD
PRODUCT: GL021/27
- **TYPE EX2**
LED STRIP LIGHT WITHIN HANDRAIL
- ▲ **TYPE EX3**
DIRECTIONAL FLUSH GROUND LIGHT
MANUFACTURER: COLLINGWOOD
PRODUCT: GL07
DETAIL: 38° BEAM ANGLE, 3000K, 8.5W
- ⊕ **TYPE G**
MANUFACTURER: SYLVANIA
PRODUCT: START IP66 FINAL EXIT BOLLARD
- ⊕ **TYPE R1**
MANUFACTURER: COLLINGWOOD
PRODUCT: UL010 IP67 SILVER 3W
- ⊕ **TYPE R2**
MANUFACTURER: SYLVANIA
PRODUCT: STERLING IP65 IK10 1325LM 830 BLACK 3000K
ADDITIONAL: STERLING HOOD ACCESSORY BLACK

| No | Date | By | Comments |
|----|----------|----|----------------|
| - | 26.02.24 | DF | PLANNING ISSUE |

Revision Notes
Status: **PLANNING**

MOXLEY
ARCHITECTS

47 Clapham High St T +44 (0)20 7720 8968
London SW4 7TL F +44 (0)20 7627 2533
www.moxley.co.uk E info@moxley.co.uk

Client: Royal Ocean Racing Club

Project: RORC Clubhouse
Cowes

Drawing Title: EXTERNAL LIGHTING

| | | | |
|-------------------------------|---------|-------|---------|
| Scale: 1:50 @ A1 (1:100 @ A3) | | | |
| Date: February 2024 | Drawn: | Chkd: | |
| Project: | Issuer: | Type: | Number: |
| SEAMOXPL2095 | | | |

MAL project file: 786-1 - RORC Clubhouse