

**GENERAL NOTES**

- Ecus drawing references:
- 21885-LD-01 Soft and Hard Landscape Proposals and Plant
- 21885-LD-02 Outline specification and maintenance schedule
- Refer to Arboricultural report for details of existing vegetation to be retained and protection measures. Report produced by Ecus Ltd reference 21217.
- Site Layout provided on 21014-B-300-Proposed Plans.
- Building foundations to be confirmed by Engineer with reference to planting proposals and NHBC guidance (or alternative where applicable). Tree locations to be fully co-ordinated once building foundation depth are confirmed.
- Refer to Engineer's details for level and drainage information.
- Setting out on site to be agreed with Landscape Architect.
- Check all dimensions on site.
- Do not scale from this drawing.
- Report any discrepancies and omissions to Ecus Ltd
- All levels indicative only. Extrapolated from site levels. All require to be checked.
- All details subject to approval by the local authority for the discharge of relevant planning conditions.

**3RD-PARTY INFORMATION**

NB This drawing includes information provided by independent surveyors and/or consultants, to whom all queries shall be made. Ecus Ltd can accept no liability for its context or accuracy.

**DESIGN**

Unless stated otherwise, the designs shown are subject to the design and site survey, investigations, and legal restrictions, the CDMA and the status of the site and the status of the various relevant Local Authority Officers, Statutory Undertakers, Fire Officers, Engineers and the like. They are copyright, project specific and confidential. No part is to be used or copied in anyway without the express prior consent of Ecus Ltd.

**TREE NOTES:**

Note that all tree and shrub locations are subject to coordination with services, to be undertaken by others. **The requirement for root barriers is to be confirmed by an engineer.**

Note that it is best practice that root barriers are required to extend 2m beyond the mature canopy spread of new trees to highways, services and buildings. In addition, root barriers are required for all new trees within 5m of highways - e.g. Greenleaf Fernox 2000' or similar. Depth of tree root barrier to be confirmed by an engineer once services design has been produced at construction detail. Install to manufacturer's and engineer's guidance.

**CDM - Risks / Hazards**

- Proposed locations of landscape elements shown are subject to the presence of below ground services. A detailed survey is to be undertaken and necessary method statements prepared and approved prior to undertaking any excavations. Work within this area.
- Care to be taken when working in proximity to the services.
- The potential presence of needles, litter etc.

**KEY**

**Soft Landscape**

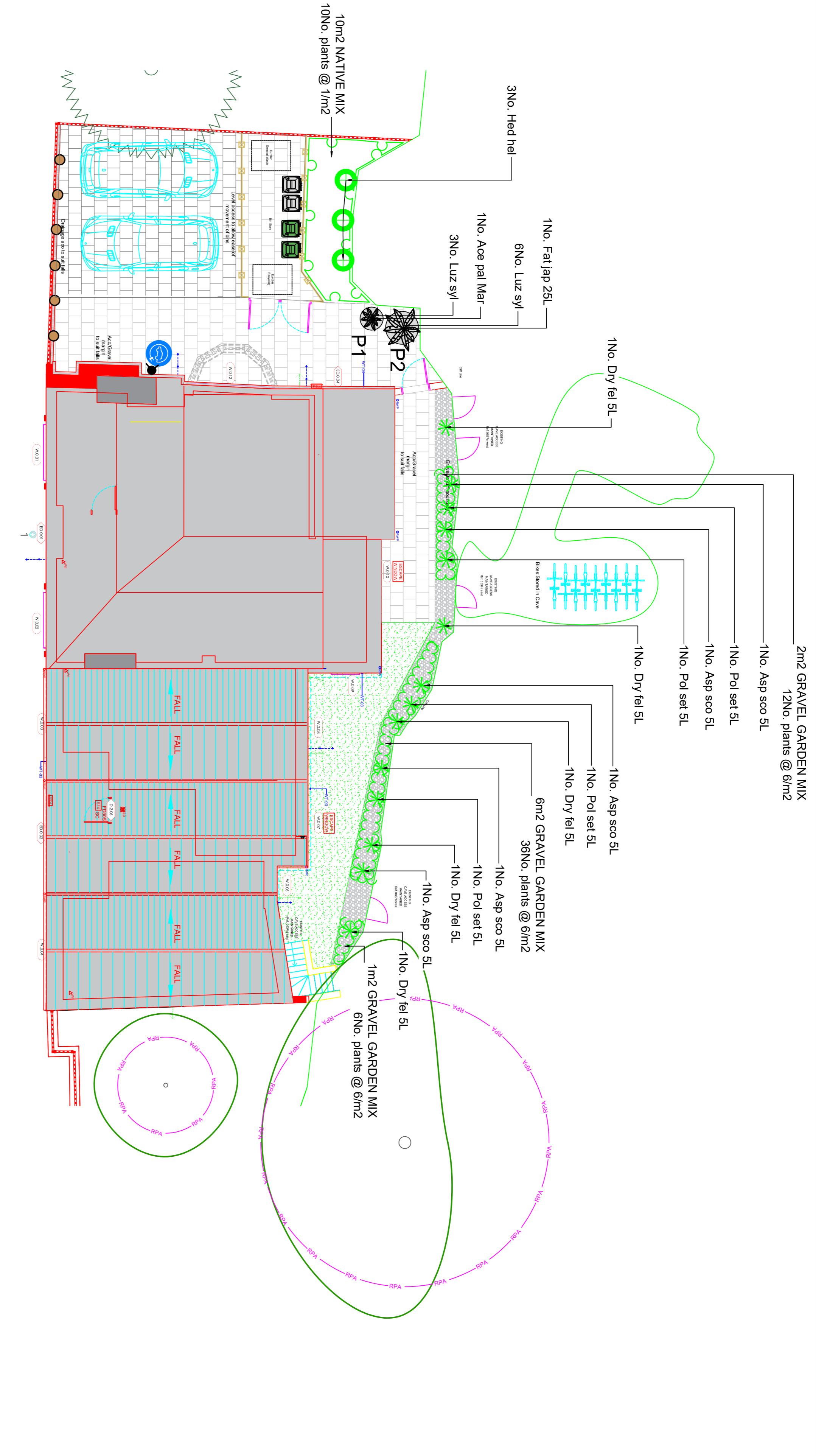
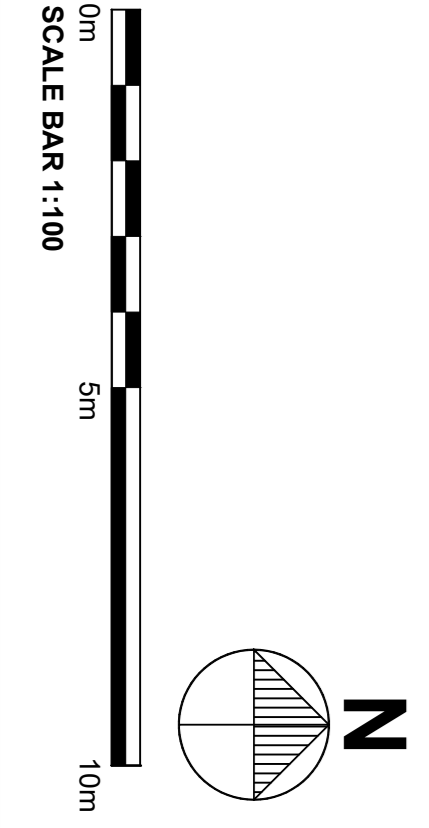
- Existing trees to be retained
- See Ecus Ltd Arboricultural report ref 21217
- Root Protection Area of Trees to be Retained
- See Ecus Ltd Arboricultural report ref 21217
- Proposed Gravel Garden Planting
- Shade and low water tolerant planting including ferns and sedums.
- Exact positioning of plants to be agreed on site.
- Proposed Planting
- Low maintenance shrubs including native and bee friendly.
- Artificial Grass
- For low maintenance and where soil depth and shade prevent good grass lawn growth.
- Supplier: Contractors choice
- Edging: Timber lawn edging boards with gravel margins where required to drainage engineer recommendations. Edging to be flush with artificial grass. Gravel garden to be lower than edging to prevent gravel slippage onto grass.
- 75mm layer of aggregate such as MOT type 1 Add a 20-40mm layer of fine aggregate such as sharp sand.
- Refer to manufacturer's instructions.

**Hard Landscape**

- General Note: Setting out, detail paving layout and inboard cutting techniques must be combined to ensure a neat finish.
- Paving Slabs for Paths, with PCC edging. e.g. Perfecta Paving, Marshalls or similar approved. www.marshalls.co.uk
- Laid to manufacturer installation guidelines. Size (mm): 450x450x35
- Colour: Natural, Joint sand Weatherpoint Buff Bond, Hair Bond
- Finish: Smooth
- Mix blocks from min of 3 packs to ensure correct colour blend.
- Block Paving for Drive, with PCC edging. e.g. Savanna, Marshalls or similar approved. www.marshalls.co.uk
- Laid to manufacturer installation guidelines. Size and Bond: 3 size random course
- Colour: Pearlant Grey, joint sand Golden Finish, Smooth
- Mix blocks from min of 3 packs to ensure correct colour blend.
- Fencing to bin store
- Jacksons Fencing www.jacksons-fencing.co.uk
- Venetian Hill and Miss fence panels to completely hide bins from sight, a slatted panel can still be used but opting for one you can't see through. With horizontal pales attached on alternating sides of the panel, you can only see through at a diagonal angle meaning what is behind the panel is hidden.
- Panels: 1.8m high x 1.83m wide
- Gate to bin store
- Gates to match Venetian hill and miss fence made to order. Jacksons or similar approved.
- Bollards - fold down stainless steel posts with padlocks. Positioned 1.2m apart.
- Supplier: Broxap or similar approved
- Product Code: BX47 0060 00-FD
- 1m high, 60mm diameter.
- Gravel on geotextile for gravel garden
- To supplement existing gravel at cliff base

**Plant pots**

- Supplier: Urbs Design urbsdesign.co.uk or similar approved
- Dium 62 plant pot
- Dims: diam 62cm, height 68cm
- 175 Lt Volume, 37cm base diameter
- Colour: White
- Dium 70 plant pot
- Dims: diam 72cm, height 83cm
- 250 Lt Volume, 43cm base diameter
- Colour: White



**Plant Schedule**

QTY	CODE	PLANT NAME	STOCK	SIZE	SPACING	SPECIFICATION
1No.	Asp pal Mar	Asp palmarum 'Marit'	C 5.7 SL	40-60cm	1m2	Branched, 3 breaks
1No.	Fat pap 25L	Fatsia japonica	C 29L	80-100cm	1/1m2	Leader

**HERBACEOUS PLANTS**

QTY	CODE	PLANT NAME	STOCK	SPACING	SPECIFICATION
5No.	Asp sco SL	Asplenium scolopendrium	C 5L	2m2	Full pot
5No.	Dry SL	Asplenium adnigrum	C 2L	2m2	Full pot
9No.	Luz syl	Luzula sylvatica	C 2L	5m2	Full pot
4No.	Pol set SL	Polystichum setiferum	C 5L	2m2	Full pot

**CLIMBERS**

QTY	CODE	PLANT NAME	STOCK	HEIGHT	HABIT
3No.	Hed hel	Hedera helix	C 3L	60-80cm	Self-clinger

**PLANT MIXES**

PERCENT	QTY	PLANT NAME	STOCK	SIZE	SPECIFICATION
6m2 GRAVEL GARDEN MIX planted @ 6m2	20%	11No. Begonia purpurascens	C 2L	15-20cm	Full pot
	20%	11No. Heuchera 'Midnight'*	C 2L	15-20cm	Full pot
	20%	11No. Heuchera 'Mermaid'*	C 2L	10-15cm	Full pot
	20%	11No. Sedum acre	C 0.5L	0-5cm	Full pot
	20%	11No. Sedum album	C 0.5L	0-5cm	Full pot
Individual varieties to be planted in groups of between 3 and 11.					

QTY	CODE	PLANT NAME	STOCK	HEIGHT	HABIT
10m2 NATIVE MIX planted @ 1m2	40%	4No. Cytisus monogyna	B Trans	60-80cm	1+1; Transplant - seed raised
	30%	3No. Corylus avellana	B Trans	60-80cm	1+2; Transplant - seed raised; branched; 3 breaks
	30%	3No. Cornus sanguinea	B Trans	60-80cm	1+1; Branched; 3 breaks

**NOTES AND ABBREVIATIONS:**

- B = Bare root (bagged)
- C = Container (or pot) grown, followed by size of the container (or pot)
- HABIT = Juvenile habit or plant shape as supplied by the nursery.
- QTY = Quantity
- SL = Spread of juvenile plant
- STOCK = Root condition/protection method eg Bare root.
- Trans = Transplant (or undercut seedling).

- Refer to specification for further information.
- All plants to be completely hardened off
- Substitutions to be agreed with Landscape Architect.
- Plant Schedule generated by 'Qscape' software 24/11/2023



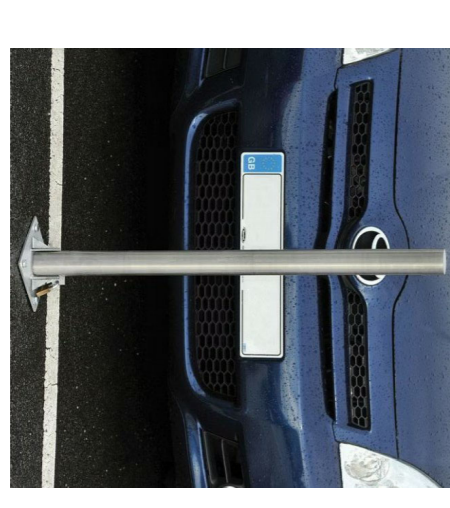
**Perfecta Paving slabs for paths**  
Natural  
by Marshalls or similar approved.  
www.marshalls.co.uk



**Venetian Hill and Miss fence panels for bin store**  
Jacksons fencing or similar approved.  
www.jacksons.co.uk



**Savanna Block Paving for driveway**  
Pearmant Grey  
by Marshalls or similar approved.  
www.marshalls.co.uk



**Stainless steel fold down post**  
Boxap or similar approved.  
www.boxap.co.uk



Asplenium Begonia Cytisus Dryas Hedera Heuchera Luzula Polystichum Sedum

Job  
**59 Cliff Road, Nottingham**

Tile  
**Soft and Hard Landscape Proposals**

Drawn by **KM** Date **Jul 23** Scale **1:100 at A1** Dwg. no. **21885-LD-01**

Ecus  
Part of C&G  
www.ecusltd.co.uk

Ecus  
Brook Hill  
Blackburn Road  
Sheffield S81 2DV  
Tel: (0114) 2669292  
www.ecusltd.co.uk

ID	RISK	MITIGATION	DATE OF MITIGATION
<b>RESIDUAL PROJECT RISKS</b>			
A	01.08.23	Ecus	Draft for comment
B	24.11.23	Ecus	Updates following comments

REV DATE DRAWN CHECKED BY  
BY BY

DRAWING STATUS: Preliminary