

The contractor is responsible for checking dimensions, tolerances and references. Any discrepancy to be verified with the Architect before proceeding with the works. Where an item is covered by drawings to different scales the larger scale drawing is to be worked to.

Do not scale drawing. Figured dimensions to be worked to in all cases.

CDM REGULATIONS 2015. All current drawings and specifications for the project must be read in conjunction with the Designer's Hazard and Environment Assessment Record

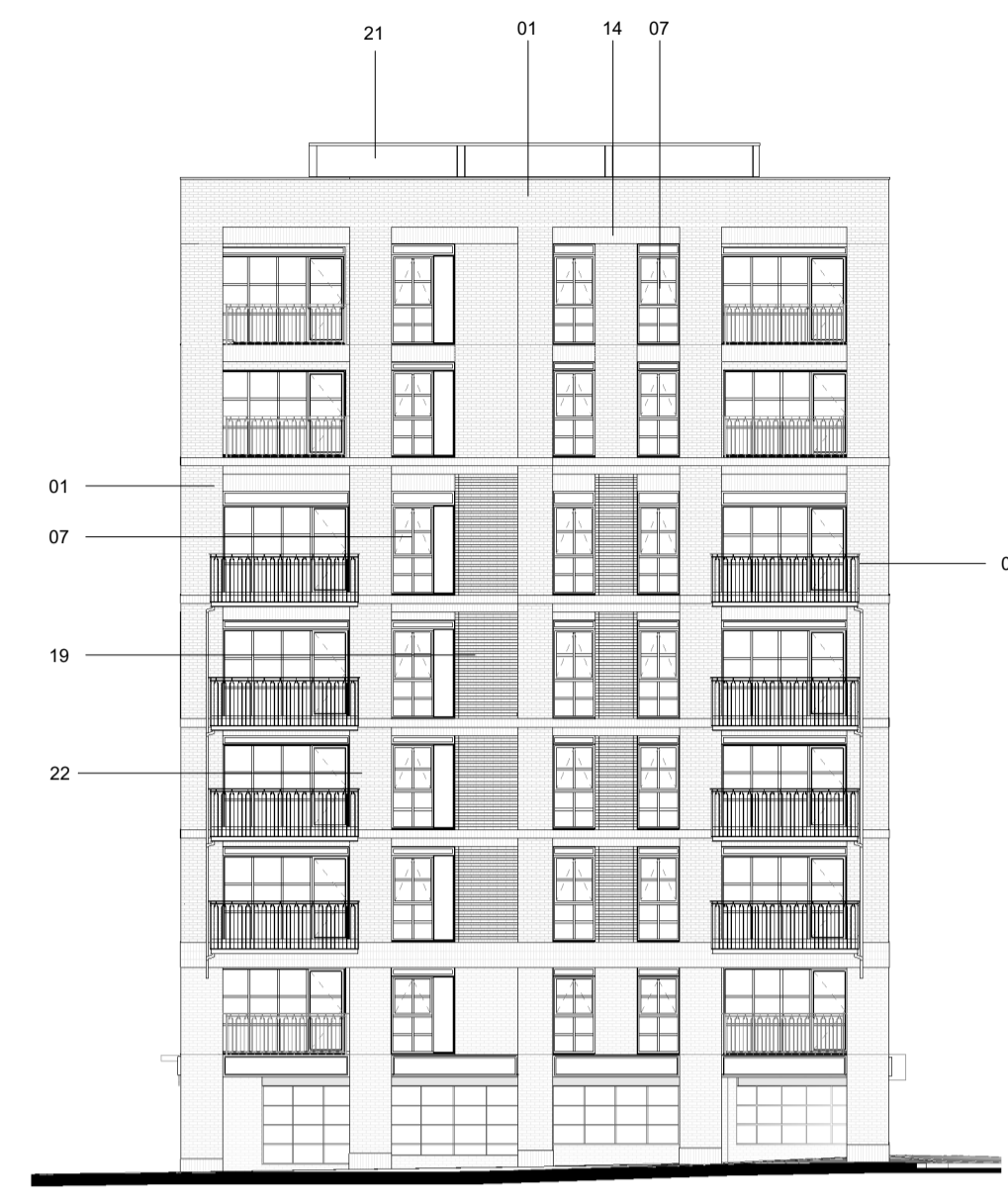
All intellectual property rights reserved.



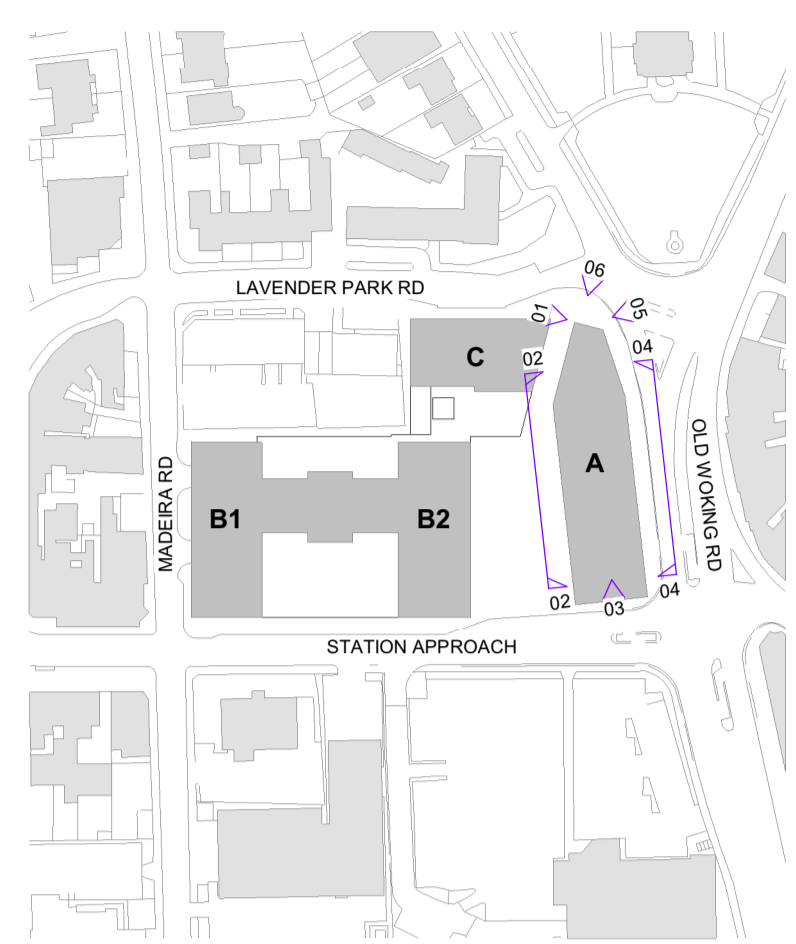
**01** Block A facing the cut  
1 : 200



**02** Block A facing the public square  
1 : 200



**03** Block A facing Station Approach  
1 : 200



Site Location Key Plan  
1 : 2000

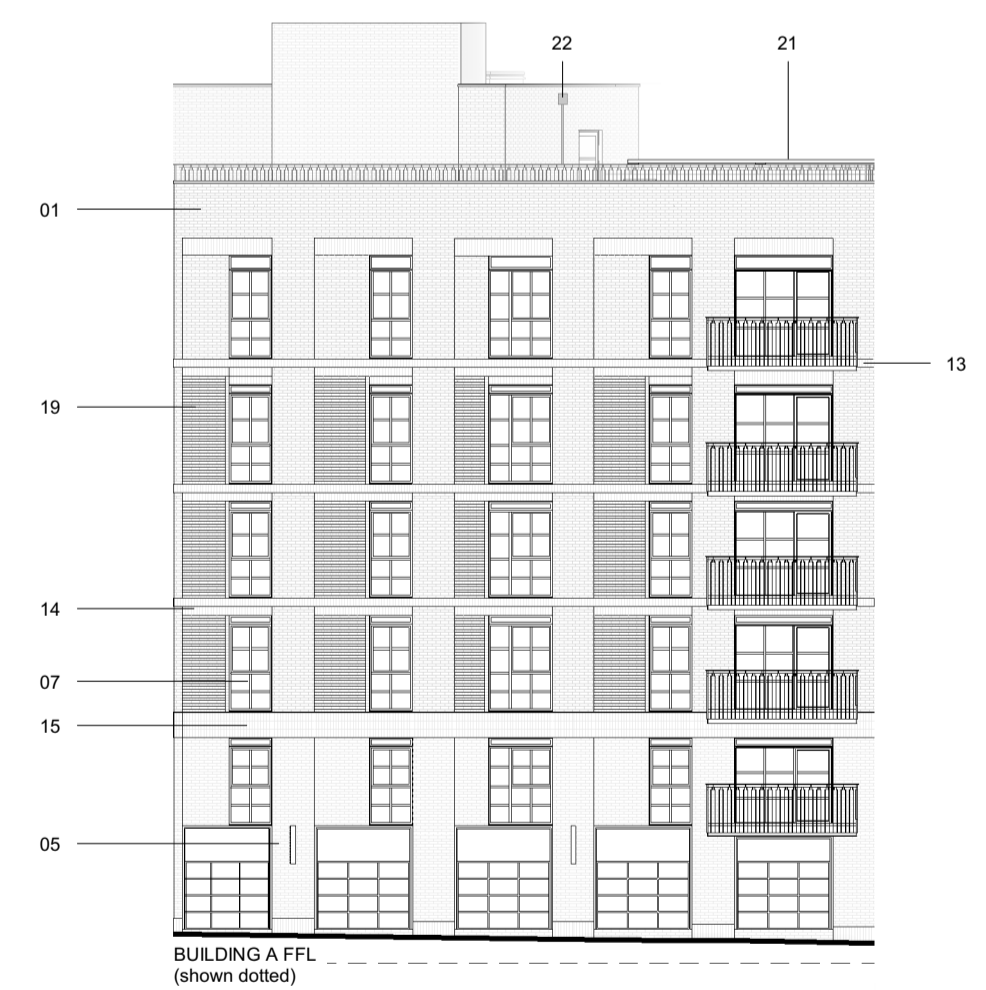


**Key**

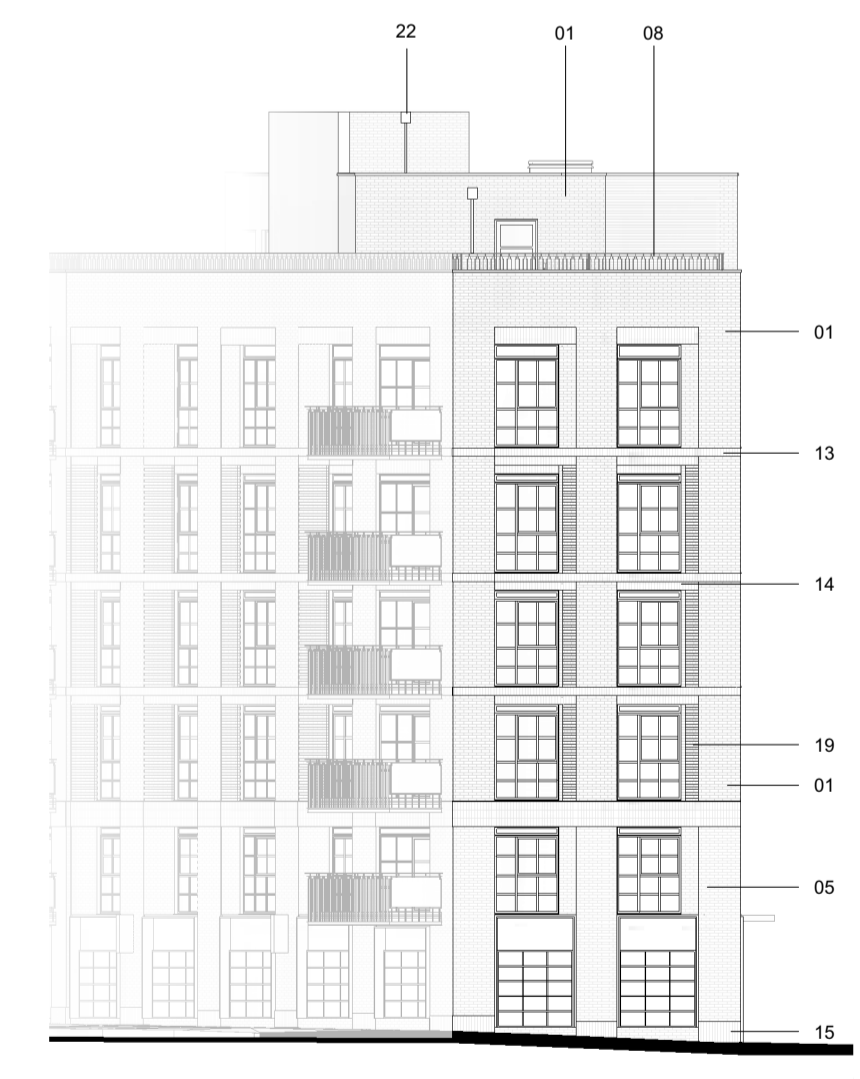
- Planning Boundary
- Material Key**
- 01 Red facing brickwork
- 02 Buff facing brickwork
- 03 Black facing brickwork
- 04 Multi-black facing brickwork with diaper pattern
- 05 Red & buff facing brickwork
- 06 Dark bronze PPC coated metal
- 07 Composite aluminium window frame; colour - black
- 08 PPC metal railing; colour - black
- 09 PPC metal & glass railing; colour - black
- 10 PPC metal fretwork with perforated pattern
- 11 PPC metal canopy
- 12 Reconstituted stone surround
- 13 Brick soldier course detail
- 14 Double soldier course detail
- 15 Triple soldier course detail
- 16 Plinth course detail - brick
- 17 Vertical brick recess
- 18 Recessed brick panel
- 19 Brick corbelling
- 20 PPC metal parapet wall capping; colour black
- 21 Plant Screening
- 22 Rain Water Pipes - Aluminium PPC colour black RAL 9005
- 23 Canopy PPC colour black RAL 9005



**04** Block A along Old Woking Rd 1 of 2  
1 : 200



**05** Block A along Old Woking Rd 2 of 2  
1 : 200



**06** Block A along Lavender Park Rd  
1 : 200

NOTE:  
Oblique elevations faded for clarity

**West Byfleet - Station Road**  
Block A Elevations

<b>WBF.</b>	<b>-2043</b>	<b>REV D</b>
<b>PLANNING</b>		
Drawn SB	Checked CJP	Date 16 DEC 2020 Scale @ A1 As indicated